

Product datasheet for **MG220858**

Stk35 (NM_183262) Mouse Tagged ORF Clone

Product data:

Product Type:	Expression Plasmids
Product Name:	Stk35 (NM_183262) Mouse Tagged ORF Clone
Tag:	TurboGFP
Symbol:	Stk35
Synonyms:	1700054C12Rik; CLIK1; Stk35I1
Mammalian Cell Selection:	Neomycin
Vector:	pCMV6-AC-GFP (PS100010)
E. coli Selection:	Ampicillin (100 ug/mL)



[View online »](#)

ORF Nucleotide Sequence:

>MG220858 representing NM_183262
 Red=Cloning site Blue=ORF Green=Tags(s)

TTTTGTAATACGACTCACTATAGGGCGGCCGGGAATTCGTCGACTGGATCCGGTACCGAGGAGATCTGCC
 GCC**CGGATCGCC**

ATGGGCCACCAGGAATCTCCGCTGACCAGAGCGCGCGGGAGGTGCAGCTTACATAAAGAGTTACGTA
 AAGTGCTCAGCTGGCGTGAACCTCGGGACGGCCACGGGAACCTGGAAGCCGAGGCCCTCCCCGGGAGCGT
 TGCTGTACATCACAAAGAGCAGCGCCGCGACGCGCTACACGCTCAGCCAGGCTCCCCGCTCGCGCCCTACC
 CGGCTCTGCAGACAAGCCCGGCTCGGAACGGACCATCCTCCGGCGCGGGCTCCAAGGGGAAACCGTTTCG
 CCCGGAAGAGGAACAGCGCCGGCCAGATCACCATCCAAGGTCCCCTCCTCCACATCTCGGGCTAGACG
 GAGGGATGAGGCAAGGGGGGCCGGGCGCGCCGTTGCTGCTCCCCCGCCCCCGCAGCCATGGAACG
 GGGAAAGAGAACGGAGCCCGCAGAGGGACAAAAGCCCGAGCGGAAAAGCGAAGCCAGTCCAGCGGG
 TACTGTGCGAGAAGCTGAGGCGCGCGCCAGGCCATGGATCCGGCTGGGCGGAGGTCCCGGGCGAGGC
 CTTCTGGCCCGCGCGCCGGATGGCGCGCGGGGATGTTCTGCACGGCCGCGCTACAGCCTTTG
 GCGGAGATCGGGCGCGCAGCTACGGCGTGGTTTATGAGGCTGTGGCTGGGCGCAGTGGGCCCAGGGTGG
 CAGTCAAGAAGATCCGCTGCGACGCTCCCGAGAACGTGGAGTTGGCACTAGCAGAATTCTGGGCCCTCAC
 CAGTCTCAAGCGCGGCACCAGAATATCGTGCACTTTGAGGAGTGCCTACAGCGCAACGGGTTAGCC
 CAGCGCATGAGTACGGCAACAAGAACTCACAGCTTTACCTGCGCCTGGTGGAGACCTCGCTCAAAGGAG
 AAAGGATCCTGGGCTATGCTGAGGAGCCCTGCTATCTCTGGTTTGTATGGAGTACTGTGAAGGTGGAGA
 CCTCAATCAGTATGCTCTGTCGGGAGACCTGACCCAGCCACCAAAAAGTTTCATGCTACAGCTTACA
 AGCGCCATTGCCTTCTGCATAAAAACCATCGTGCACAGGGACCTAAAGCCAGACAACATCCTGATCA
 CAGCGGTCTGGCACCCCATCCTCAAGGTGGCAGACTTTGGACTGAGCAAGGTCTGTGCAGGGTGGC
 ACCCCGAGGCAAAAGAGGGCAATCAAGATAACAAAATGTGAATGTGAATAAATACTGGCTGTCTCAGCT
 TGTGGCTCAGACTTCTACATGGCTCCCGAAGTCTGGGAGGGACACTATACAGCCAAGCGGACATCTTTG
 CTCTGGGCATTATCATCTGGGCAATGATAGAAAGAATTACCTTTATTGACTCTGAAACCAAGAAGGAGCT
 CCTGGGGACCTACATTAAGCAAGGGACTGAGATCGTCCCTGTTGGTGGGCGCTGCTAGAAAACCCAAAG
 ATGGAGTTGCATATCCCCGAAACGTAGGACTTCCATGTCTGAGGGGGTCAAGCAGCTCTTGAAAGACA
 TGTTAGCTGCTAACCACAGGACCGACCTGATGCTTTTGAACCTGAAACCCGAATGGACCAGTCCATG
 TGCTGCT

ACGCGTACGCGGCCGCTCGAG - GFP Tag - GTTTAA

Protein Sequence:

>MG220858 representing NM_183262
 Red=Cloning site Green=Tags(s)

MGHQESPLTRAAAGGAAYIKRLRKVLSWRELDGHNLEAEASPGSVAVITRAAPRRATRSARLPASRPT
 RLCRQARLGDHPPARAPRGNRFARKRNSAGQITIQGPAPPHLGARRRDEARGARAAPLLPPPPAAMET
 GKENGARRGTSKPERKRRSPVQVRLCEKLRPAAQAMPDAGAEVPGAEFLARRRPDGGGDDVPARPRYSLL
 AEIGRGSYGVVYEAVAGRSGARVAVKKIRCDAPENVELALAEFWALTSKRRRHQNIIVQFEECVLRNGLA
 QRMSHGKNSQLYLRLVETSLKGERILGYAEPCYLFVMEYCEGGDLNQYVLSRRPDPATNKSFMLQLT
 SAIAFLHKNHIVHRDLKPDNILITERSGTPILKVADFGLSKVCAGLAPRGKEGNQDNKNVNVNKYWLSSA
 CGSDFYMAPEVWEGHYTAKADIFALGIIWAMIERITFIDSETKKELLGTYIKQGTETIVPVGELLENPK
 MELHIPQKRRTSMSEGVKQLLKDMLAANPQDRPDAFELETRMDQVTCAA

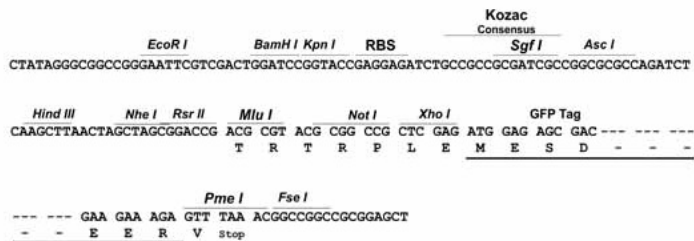
TRTRPLE - GFP Tag - V

Restriction Sites:

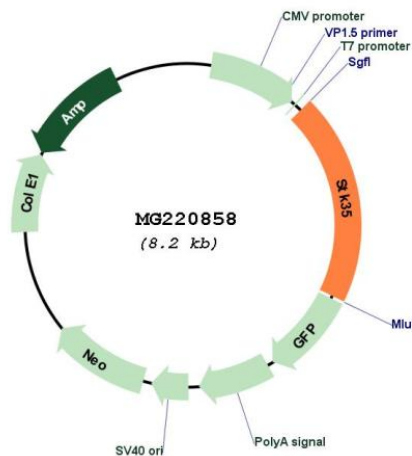
Sgfl-MluI

Cloning Scheme:

Cloning sites used for ORF Shutting:



Plasmid Map:



ACCN:	NM_183262
ORF Size:	1617 bp
OTI Disclaimer:	The molecular sequence of this clone aligns with the gene accession number as a point of reference only. However, individual transcript sequences of the same gene can differ through naturally occurring variations (e.g. polymorphisms), each with its own valid existence. This clone is substantially in agreement with the reference, but a complete review of all prevailing variants is recommended prior to use. More info
OTI Annotation:	This clone was engineered to express the complete ORF with an expression tag. Expression varies depending on the nature of the gene.
Components:	The ORF clone is ion-exchange column purified and shipped in a 2D barcoded Matrix tube containing 10ug of transfection-ready, dried plasmid DNA (reconstitute with 100 ul of water).
Reconstitution Method:	<ol style="list-style-type: none">1. Centrifuge at 5,000xg for 5min.2. Carefully open the tube and add 100ul of sterile water to dissolve the DNA.3. Close the tube and incubate for 10 minutes at room temperature.4. Briefly vortex the tube and then do a quick spin (less than 5000xg) to concentrate the liquid at the bottom.5. Store the suspended plasmid at -20°C. The DNA is stable for at least one year from date of shipping when stored at -20°C.
RefSeq:	NM_183262.3 , NP_899085.3
RefSeq Size:	6204 bp
RefSeq ORF:	1620 bp
Locus ID:	67333
UniProt ID:	Q80ZW0
Cytogenetics:	2 F1