

Product datasheet for **MG220836**

Slc5a6 (NM_177870) Mouse Tagged ORF Clone

Product data:

Product Type:	Expression Plasmids
Product Name:	Slc5a6 (NM_177870) Mouse Tagged ORF Clone
Tag:	TurboGFP
Symbol:	Slc5a6
Synonyms:	E430023I20
Mammalian Cell Selection:	Neomycin
Vector:	pCMV6-AC-GFP (PS100010)
E. coli Selection:	Ampicillin (100 ug/mL)



[View online »](#)

ORF Nucleotide Sequence:

>MG220836 representing NM_177870
 Red=Cloning site Blue=ORF Green=Tags(s)

TTTTGTAATACGACTCACTATAGGGCGGCCGGAATTCGTCGACTGGATCCGGTACCGAGGAGATCTGCC
 GCC**CGGATCGCC**

ATGAGTGTGGCGAGCACTGCAGCTCCCTCCATACAACCTCAGGCTCCAGCGGGCTATTTCTACCTTTT
 CTGATGTGGACTATGTGGTATTTGGCCTGTTGCTGGTCCCTCTCCCTTGTCATTGGGCTCTATCATGCTTG
 TCGTGGCTGGGGCCACCATAACCGTTGGTGAAGTCTGATGGCAGACCGAAAAATGGGCTGTCTTCTGTG
 GCACTGTCCTTGTGGCCACCTCCAGTCAGCCGTGGCCATCCTGGGAGCACCAGCTGAGATCTTCCGAT
 TTGGAACCCAGTATTGGTTCCTGGGGTCTCTACTTCTGGGGCTCCTGATCCCTGCTCACATCTTCAT
 CCCTGTCTTCTACCGTCTGCATCTGACCAGCGCCTATGAGTACCTAGAGCTCCGTTCAATAAAGCAGTT
 CGGATCTGTGGGACTGTGACCTTCATCTTTCAGATGGTGATATACATGGGAGTTGCTCTCTATGCACCAT
 CCTTGGCCCTCAATGCAGTGACTGGATTTGATTTATGGCTGTGCTGCTGGCCCTAGGAATTGTCTGCAA
 CATCTACACTGCACTGGGTGGGCTGAAGGCTGTATCTGGACAGATGTGTCCAAACACTGGTCATGTTT
 CTGGGGCAGCTGGTAGTGATCATTGTAGGAGCAGCCAGAGTGGGTGGCTTGGGCCATGTATGGAATGTGA
 CTTCCCAGCATGGCCTCATCTCTGGGATTAACCTGGATCCTGACCCCTTTGTGCGTCATACTTTCTGGAC
 TTTGGCCTTTGGAGGTGCTTTCATGATGCTCTCCTTGTATGGAGTGAATCAGGCTCAGGTGCAGCGCTAC
 CTCAGTCCCCTCGGAGAGAGCTGCTGTGCTCTCCTGCTATGCAGTGTCCCTTGGCCAGCAAGTGGCC
 TCTGCATGAGTGCCTCATTGGTCTGGTCACTGTTTGCCTATTATAACATGTATAGCATGAGCCCCGAGCT
 GAAGCAAGCAGCCCTGACCAGTTAGTCTCTATTTGTGATGGACCTCCTGAAAGACATGCCAGGGCTG
 CCTGGGCTTTCGTTGCCTGTCTCTTTCAGTGGATCTCTCAGCACCATATCCTCTGCATTCAATCACTGG
 CAACTGTCACGATGGAAGACCTGATCCAGCCCTGGTCCCACAGTTGACTGAAACTCGGGCCATCATGCT
 TTCTCGAGGCCTTGCCTTTGCCTATGGCTAGTTTGCCTGGGAATGGCCTATATTTCTCTCATCTGGGA
 TCAGTGTCCAGGCAGCACTCAGTATCTTTGGCATGGTTGGAGGGCCACTGCTGGGACTCTTCTGCCTTG
 GACTGTTCTTCCCATGCGCCAACCCTCTTGGTGCATTGTAGGCCTGTTGACGGGACTCACCATGGCCTT
 CTGGATCGGCATTGGGAGCATAGTAAGCAGGATGAGTTCTGCTGTGGCACCCTCCCTTAATGGATCC
 AGCTCCTTCTGCCTGCCAATGTAAGTGTGCGCGCTGTGACCACCGTGTGCTTCTACCCTGTCCAAGC
 CCACAGGACTGCAGCACTTCTATCCCTGTCCTATTTATGGTACAGCGCGCACAACTCCACCACAGTCAT
 TGTAGTGGCCTGATTGTCAGTCTGCTCACTGGGGGAATGCGGGCCGGTCCCTGAACCCCGGCACCATT
 TACCCTGTGCTGCCAAAGCTCCTAGCACTCCTGCCCTATCCTGCCAGAAGCGGCTTTGCTGGAGAAGCC
 ACAGCCAGGATATCCCTGTGATCCCAACCTGTTTCCAGAGAAGATGAGGAATGGGGTGTGAGGACAG
 CACAGACAAAGAGAGGATGGCTGAAGATGGCCTCGTCCACCAGCCGTGCAGCCCTACCTACGTTGTCCAG
 GAGACCTCCCTG

ACGCGTACGCGGGCCGCTCGAG – GFP Tag – GTTTAA

Protein Sequence:

>MG220836 representing NM_177870
 Red=Cloning site Green=Tags(s)

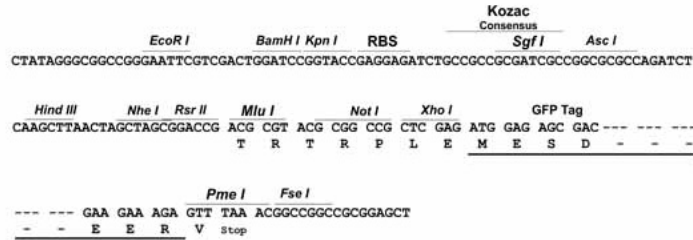
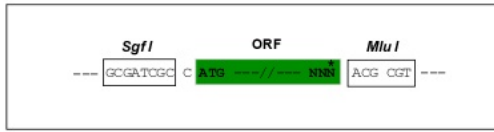
MSVASTAAPFHSTSGSSGAISTFSDVDYVVFGLLLVLSLVIGLYHACRGWGHHTVGEILLMADRKMGLPV
 ALSLLATFQSAVAILGAPAEIFRFGTQYWFLGCSYFLGLLIPAHIFIPVFYRLHLTSAYEYLELRFNKAV
 RICGTVTFIFQMVIYMGVALYAPSLALNAVTFDFLWLSVLALGIVCNIIYALGGLKAVIWTDFVQTLVMF
 LGQLVVIIVGAARVGGGLGHVWNVTSQHGLISGINLDPDPFVRHTFWTLAFGGVFMMLSLYGVNQAVQRY
 LSSHSEAAVLSCYAVFPCQVALCMSCLIGLVMFAYYNNMYSMSPELKQAAPDQLVLYFVMDLLKDMPLG
 PGLFVACLFSGSLSTISSAFNSLATVTMEDLIQPWFPLTETRAIMLSRGLAFAYGLVCLGMAYISSHLG
 SVLQAALSIFGMVGGPLLGLFCLGLFFPCANPLGAIVGLLTGLTMAFWIGIGSIVSRMSSAVAPPLNGS
 SSFLPANVTVAAVTTVMPSTLSKPTGLQHFYLSYLWYSAHNSTTVIVVGLIVSLLTGGMRGRSLNPGTI
 YPVLPLKLLALLPLSCQKRLCWRSHSQDIPVIPNLFPEKMRNGVLQDSTDKERMAEDGLVHQPCSPYVVVQ
 ETSL

TRTRPLE – GFP Tag – V

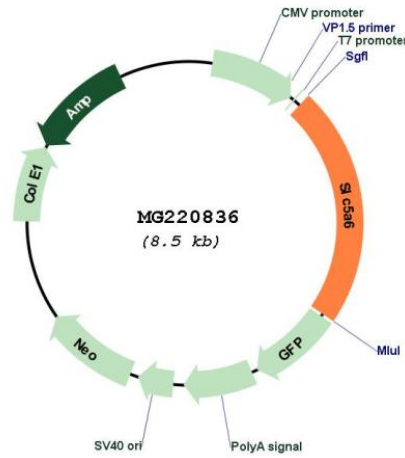
Restriction Sites: SgfI-MluI

Cloning Scheme:

Cloning sites used for ORF Shuttling:



Plasmid Map:



ACCN: NM_177870

ORF Size: 1902 bp

OTI Disclaimer:	The molecular sequence of this clone aligns with the gene accession number as a point of reference only. However, individual transcript sequences of the same gene can differ through naturally occurring variations (e.g. polymorphisms), each with its own valid existence. This clone is substantially in agreement with the reference, but a complete review of all prevailing variants is recommended prior to use. More info
OTI Annotation:	This clone was engineered to express the complete ORF with an expression tag. Expression varies depending on the nature of the gene.
Components:	The ORF clone is ion-exchange column purified and shipped in a 2D barcoded Matrix tube containing 10ug of transfection-ready, dried plasmid DNA (reconstitute with 100 ul of water).
Reconstitution Method:	<ol style="list-style-type: none">1. Centrifuge at 5,000xg for 5min.2. Carefully open the tube and add 100ul of sterile water to dissolve the DNA.3. Close the tube and incubate for 10 minutes at room temperature.4. Briefly vortex the tube and then do a quick spin (less than 5000xg) to concentrate the liquid at the bottom.5. Store the suspended plasmid at -20°C. The DNA is stable for at least one year from date of shipping when stored at -20°C.
RefSeq:	NM_177870.5 , NP_808538.1
RefSeq Size:	3344 bp
RefSeq ORF:	1905 bp
Locus ID:	330064
UniProt ID:	Q5U4D8
Cytogenetics:	5 B1
Gene Summary:	Transports pantothenate, biotin and lipoate in the presence of sodium.[UniProtKB/Swiss-Prot Function]