

Product datasheet for **MG220835**

Slc5a6 (NM_001177621) Mouse Tagged ORF Clone

Product data:

Product Type:	Expression Plasmids
Product Name:	Slc5a6 (NM_001177621) Mouse Tagged ORF Clone
Tag:	TurboGFP
Symbol:	Slc5a6
Synonyms:	E430023I20
Mammalian Cell Selection:	Neomycin
Vector:	pCMV6-AC-GFP (PS100010)
E. coli Selection:	Ampicillin (100 ug/mL)



[View online »](#)

ORF Nucleotide Sequence:

>MG220835 representing NM_001177621
 Red=Cloning site Blue=ORF Green=Tags(s)

TTTTGTAATACGACTCACTATAGGGCGGCCGGGAATTCGTCGACTGGATCCGGTACCGAGGAGATCTGCC
 GCC**CGGATCGCC**

ATGAGTGTGGCGAGCACTGCAGCTCCCTCCATACAACCTCAGGCTCCAGCGGGCTATTTCTACCTTTT
 CTGATGTGGACTATGTGGTATTTGGCCTGTTGCTGGTCCCTCCCTTGTCATTGGGCTCTATCATGCTTG
 TCGTGGCTGGGGCCACCATAACCGTTGGTGAAGTCTGATGGCAGACCGAAAAATGGGCTGTCTTCTGTG
 GCACTGTCCTTGTGGCCACCTCCAGTCAGCCGTGGCCATCCTGGGAGCACCAGCTGAGATCTTCCGAT
 TTGGAACCCAGTATTGGTTCCTGGGGTCTCTACTTCTGGGGCTCCTGATCCCTGCTCACATCTTCAT
 CCCTGTCTTCTACCGTCTGCATCTGACCAGCGCCTATGAGTACCTAGAGCTCCGTTCAATAAAGCAGTT
 CGGATCTGTGGGACTGTGACCTTCATCTTTCAGATGGTGATATACATGGGAGTTGCTCTCTATGCACCAT
 CCTTGGCCCTCAATGCAGTGACTGGATTTGATTTATGGCTGTGCTGCTGGCCCTAGGAATTGTCTGCAA
 CATCTACACTGCCTGGTGGGCTGAAGGCTGTATCTGGACAGATGTGTCCAAACACTGGTCATGTTT
 CTGGGAGCTGGTAGTGATCATTGTAGGAGCAGCCAGAGTGGGTGGCTTGGGCCATGTATGGAATGTGA
 CTTCCAGCATGGCCTCATCTCTGGGATTAACCTGGATCCTGACCCCTTTGTGCGTCATACTTTCTGGAC
 TTTGGCCTTTGGAGGTGCTTTCATGATGCTCTCCTTGTATGGAGTGAATCAGGCTCAGGTGCAGCGCTAC
 CTCAGTCCCCTCGGAGAGAGCTGCTGTGCTCTCCTGCTATGCAGTGTCCCTTGGCAGCAAGTGGCC
 TCTGCATGAGTGCCTCATTGGTCTGGTGTGTTGCCTATTATAACATGTATAGCATGAGCCCCGAGCT
 GAAGCAAGCAGCCCTGACCAGTTAGTCTCTATTTGTGATGGACCTCCTGAAAGACATGCCAGGGCTG
 CCTGGGCTTTCGTTGCCTGTCTCTTTCAGTGGATCTCTCAGCACCATATCCTCTGCATTCATCACTGG
 CAACTGTACAGATGGAAGACCTGATCCAGCCCTGGTCCACAGTTGACTGAAACTCGGGCCATCATGCT
 TTCTCGAGGCCTTGCCTTTGCCTATGGCTAGTTTGCCTGGGAATGGCCTATATTTCTCTCATCTGGGA
 TCAGTGTCCAGGCAGCACTCAGTATCTTTGGCATGGTTGGAGGGCCACTGCTGGGACTCTTCTGCCTTG
 GACTGTTCTTCCCATGCGCCAACCTCTTGGTGCATTGTAGGCCTGTTGACGGGACTCACCATGGCCTT
 CTGGATCGGCATTGGGAGCATAGTAAGCAGGATGAGTTCTGCTGTGGCACCCTCCCTTAATGGATCC
 AGCTCCTTCTGCCTGCCAATGTAAGTGTGCGCGCTGTGACCACCGTGTGCTTCTACCCTGTCCAAGC
 CCACAGGACTGCAGCACTTCTATCCCTGTCCTATTTATGGTACAGCGCGCACAACTCCACCACAGTCAT
 TGTAGTGGCCTGATTGTGAGTCTGCTCACTGGGGGAATGCGGGGCGGTCCTGAACCCCGGCACCATT
 TACCCTGTGCTGCCAAAGCTCCTAGCACTCCTGCCCTATCCTGCCAGAAGCGGCTTTGCTGGAGAAGCC
 ACAGCCAGGATATCCCTGTGATCCCAACCTGTTCCAGAGAAGATGAGGAATGGGGTGTGAGGACAG
 CACAGACAAAGAGAGGATGGCTGAAGATGGCCTCGTCCACCAGCCGTGCAGCCCTACCTACGTTGTCCAG
 GAGACCTCCCTG

ACGCGTACGCGGGCCGCTCGAG - GFP Tag - GTTTAA

Protein Sequence:

>MG220835 representing NM_001177621
 Red=Cloning site Green=Tags(s)

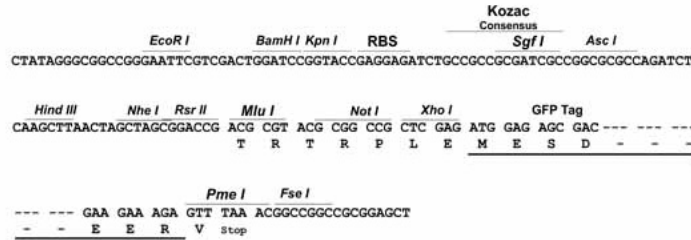
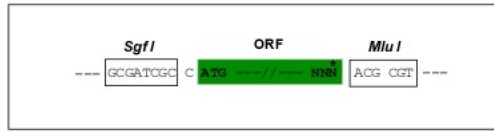
MSVASTAAPFHSTSGSSGAISTFSDVDYVVFGLLLVLSLVIGLYHACRGGHHTVGEILLMADRKMGLP
 ALSLLATFQSAVAILGAPAEIFRFGTQYWFLGCSYFLGLLIPAHIFIPVFYRLHLTSAYEYLELRFNKAV
 RICGTVTFIFQMIYMGVALYAPSLALNAVTFDFLWLSVLALGIVCNIIYALGGLKAVIWTDFVQTLVMF
 LGQLVVIIVGAARVGGGLGHVWVNTSQHGLISGINLDPDPFVRHTFWTLAFGGVFMMLSLYGVNQAVQRY
 LSSHSEAAVLSCYAVFPCQVALCMSCLIGLVMFAYYNMYMSPELKQAAPDQLVLYFVMDLLKDMPL
 PGLFVACLFSGSLSTISSAFNSLATVTMEDLIQPWFPLTETRAIMLSRGLAFAYGLVCLGMAYISSHLG
 SVLQAALSIFGMVGGPLLGLFCLGLFFPCANPLGAIVGLLTGLTMAFWIGIGSIVSRMSSAVAPPLNGS
 SSFLPANVTVAAVTTVMPSTLSKPTGLQHFYLSYLWYSAHNSTTVIVVGLIVSLLTGGMRGRSLNPGTI
 YPVLPKLLALLPLSCQKRLCWRSHSQDIPVIPNLFPEKMRNGVLQDSTDKERMAEDGLVHQPCSPYVVVQ
 ETSL

TRTRPLE - GFP Tag - V

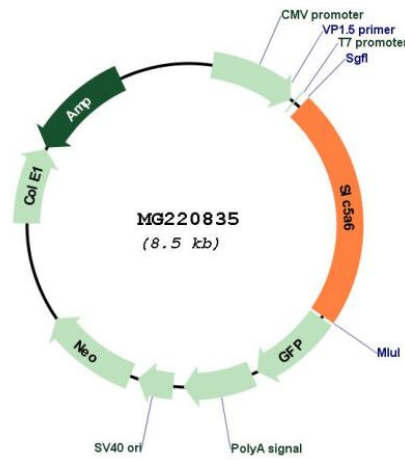
Restriction Sites: SgfI-MluI

Cloning Scheme:

Cloning sites used for ORF Shuttling:



Plasmid Map:



ACCN: NM_001177621

ORF Size: 1902 bp

OTI Disclaimer:	The molecular sequence of this clone aligns with the gene accession number as a point of reference only. However, individual transcript sequences of the same gene can differ through naturally occurring variations (e.g. polymorphisms), each with its own valid existence. This clone is substantially in agreement with the reference, but a complete review of all prevailing variants is recommended prior to use. More info
OTI Annotation:	This clone was engineered to express the complete ORF with an expression tag. Expression varies depending on the nature of the gene.
Components:	The ORF clone is ion-exchange column purified and shipped in a 2D barcoded Matrix tube containing 10ug of transfection-ready, dried plasmid DNA (reconstitute with 100 ul of water).
Reconstitution Method:	<ol style="list-style-type: none">1. Centrifuge at 5,000xg for 5min.2. Carefully open the tube and add 100ul of sterile water to dissolve the DNA.3. Close the tube and incubate for 10 minutes at room temperature.4. Briefly vortex the tube and then do a quick spin (less than 5000xg) to concentrate the liquid at the bottom.5. Store the suspended plasmid at -20°C. The DNA is stable for at least one year from date of shipping when stored at -20°C.
RefSeq:	NM_001177621.1 , NP_001171092.1
RefSeq Size:	3455 bp
RefSeq ORF:	1905 bp
Locus ID:	330064
UniProt ID:	Q5U4D8
Cytogenetics:	5 B1
Gene Summary:	Transports pantothenate, biotin and lipoate in the presence of sodium.[UniProtKB/Swiss-Prot Function]