

Product datasheet for **MG220827**

Atp1a4 (NM_013734) Mouse Tagged ORF Clone

Product data:

Product Type:	Expression Plasmids
Product Name:	Atp1a4 (NM_013734) Mouse Tagged ORF Clone
Tag:	TurboGFP
Symbol:	Atp1a4
Mammalian Cell Selection:	Neomycin
Vector:	pCMV6-AC-GFP (PS100010)
E. coli Selection:	Ampicillin (100 ug/mL)
ORF Nucleotide Sequence:	>MG220827 representing NM_013734 Red=Cloning site Blue=ORF Green=Tags(s)

TTTTGTAATACGACTCACTATAGGGCGGCCGGAATTCGTCGACTGGATCCGGTACCGAGGAGATCTGCC
GCC**CGATCGCC**

ATGGAGCCTGAAAAGAAAAGGAGGTAGAGGCCCTGGTGAAGCTGAATCAGAAACCAAGACCCAGCACCA
GGTCCCTCAACTACAAATAGACAGCCGAAAATGAAAAGAAGGAAGAAAGATTTAGAAGAGCTGAAGAAGGA
AGTGGTTATGGATGATCACAAGCTAACGTTGGATGAGCTGAGTGCCAAGTACTCTGTGGACTTGACCAAG
GGTCTTAGCATCCTAGAAGCCCAGGATATTCTGTTTCAAATGGACCGAATGTACTAATCCTCCTCCAA
CCACTCCAGAGTGGGTCAAATCTGTAGACAACCTGTTGGTGGCTTCTCCCTCTACTGTGGACTGGTGC
CTGTCTCTGCTTCTGGCCTATGGCATACATGTAATATTACAAGAAAACGCCAACAAAGATAATCTG
TACCTGGGATTGTAATCTGCGGTGATCATTACCGGCTGCTTCTCATATTACCAGGAGGCCAAGA
GCTCCAAGATCATGGAGTCTTTAAGAACATGGTGCCTCAGCAAGCTCTGGTGATTTCGAGATGGAGAGAA
AATGCAAATCAATGTAAGAGATGTGGTTTTGGGAGACCTAGTAGAGGTGAAGGGAGGAGACCAAATCCCT
GCTGATACAGGGTTATCTCGGGCAAGGATGCAAGGTAGACAATTCCTCCTTGACTGGGGAGTCAGAAC
CCCAGTCTCGCTGCCCTGATTGCACTCATGAGAACCCTCTGGAGACACGGAATATCATCTTCTTCCAC
TAACTGTGTAGAAGGAACAGCTCGGGTATTGTGATTGCTACAGGAGACTACACAGTAATGGGCCGGATT
GCTTCCCTGACATCAGGCTTGAATGGCAAGACCCCGATTGCCACCGAAATCGAACATTCATCCATT
TGATCACAGCTGTGCGGTCTTCTCGGTGTTTCAATTTTTGGCTCTCGATTATCTGGGTTACACCTG
GCTGGATGCTGTCAATTTCTTATTGGTATCATTGTGGCCAATGTGCCGGAAGGGCTGCTGGCCACTGTC
ACTGTGTGCTGACGCTGACCGCAAGCGCATGGCTCGCAAGAACTGCCTGGTGAAGAACCTGGAGGCCG
TGGAGACGCTGGGCTCCACGTCCACCATCTGCTCAGACAAGACGGGCACCCCTCACCCAGAACCAGCATGAC
AGTGGCGCATTTGTGGTTTGATAAGACTGTGTATGAGGCCGACACCAGTGAGGAGCAAACACGGGGAAA
ACGTTTCCCAAGTCTCAGACACCTGGTTTTACCTGGCTCGAATCGTGGCCTCTGTAACCGGGCCGACT
TTAAACCCATCAGGAGTCTGTTCCCATAGCTAAGCGGGCAACAACAGGGGATGCTTCCGAGTCAGCTCT
CTCAAATTCATTGAGCAGTCTTACAACCCGTGAGCGAAATGAGGCAGAAAAACCCCAAGTGGCGGAG
ATTCCCTTAACTCCACCAACAAGTATCAGATGTCCATCCACTTCTGGAAGATAATTCGAAGCCACG
TGCTGCTAATGAAAGGTGCCCCAGAGAGGATCTTTGATTTTTGCTCCAGTTTCTGCTGAATGGGCAGGA



[View online »](#)

```
GTACCCTATGGATGAGGAAATGAAGATGGACTTCCAGAATGCCTACATAGAAGCTGGGAGGTCTGGGCGAA
CGTGTGCTGGGGTTCGCTTCTTGAACCTGCCTAGCAATTTCTCTAAGGGGTTCCAGTTTAAATACCGATG
AGTTAAATTTTCCATGGAAAATCTGTGTTTCGCGGGCCTCATCTCCATGATTGATCCTCCTCGGACGGC
CGTGCCTGACGCTGTGAGCAAATGTGCAAGCGCGGGATCAAGGTGATCATGGTAACGGGGGATCATCCC
ATCACAGCCAAAGCTATTGCCAAAAGTGTGGGTATCATTTCAGAAGGTAAACGACACGGCGGAGGACATTG
CCGCTCGGCTGAATATCCCTATCAGTCAAGTCAATAACAAGTCTGTTAAAGCCATTGTAGTGCACGGCTC
AGAAGTAAAAGACATGGAATCCCAACAGCTGGACGACATCCTCAAGTCTATAAAGGAGATTGTCTTTGCC
CGGACCTCTCCTCAGCAGAACTCATTTGTGGAGGGGTGTAGCGACTGGGAGCCATTGTGGCAGTGA
CTGGTGACGGGGTGAACGACTCCCCGCACTGAAGAAGGCTGACATCGGCATTGCCATGGGCATCACAGG
CTCTGATGTCTCTAAACAGGCGGCTGACATGATCCTTCTTACGACAATTTTGCCTCCATTGTGACAGGC
GTGGAGGAGGGCCGCTCATCTTTGACAACCTGAAGAAGTCCATCGCATAACCCCTGACCAGCAACATCC
CTGAGATCACCCCTTCTGCTGTTTCATCATCTTAAGCATACCCTTGCCTCTGGGACCATAAACCATTCT
CTGCATCGACCTGGGCACTGACATGGTCCCTGCTATCTCCCTGGCTTATGAATCACCTGAAAGTACATC
ATGAAAAGGCTTCCACGGAACCCCAAAACGGACAATCTTGTGAACAACCGTCTTATTGGCATGGCCTATG
GGCAGATTGGGATGATACAGGCTCTGGCTGGATTTTTTACCTATTTTGTGATCCTGGCGGAGAATGGTTT
TAAGCCTCTTGATCTTCTGGGTATCCGTCTATACTGGGATGATACACAATTAATGACCTAGAGGACAGC
TATGGGACGACGTGGACCTATGAGCAGCGGAAGGTGGTGAATTACATGCCAAACGGCCTTCTTATCA
GTATCGTGATTGTGACGTGGGCTGACCTCATCATCTGCAAGACACGCAGAAATCACTCTTCAAGCAGGG
CATGAAAAACAAAATCCTAATATTTGGACTCCTTGAGGAGACAGTCTGGCAGCTTCTCTGCTCCTACGTT
CCAGGCATGGATGTGTCCTGCGGATGTACCCACTCAAGATAAAGTGGTGGTCTGCGCACTTCCCTACA
GTGTTCTCATCTTCGTATGATGAAATCAGAAAATTCATCCGGAGACGGCCTGGTGGATGGCTGGA
GAAGGAGACGTACTAC
```

ACGCGTACGCGGCCGCTCGAG - GFP Tag - GTTTAA

Protein Sequence:

>MG220827 representing NM_013734
 Red=Cloning site Green=Tags(s)

```
MEPGKEKEVEAPGELNQPSPSTRSSTNRQPKMKRRKKDLEELKKEVVMDDHKLTLDELSAKYSVDLTK
GLSILEAQDILFQNGPNVLTTPPTTPEWVKFCRQLFGGFSLLLWTGACLCFLAYGIHVNYKENANKDNL
YLGIVLSAVVVIITGCFSYQEAKSSKIMESFKNMVPQQALVIRDGEMQINVRDVVLGDLVEVKGGDQIP
ADIRVISAQGCKVDNSSLTGESEPPSRCPDCTHENPLETRNIIFSTNCVEGTARGIVIATGDYTVMGRI
ASLTSGLQMKTPIATEIEHFIHLITAVAVFLGVSFFWLSIILGYTWLDAVIFLIGIIVANVPEGLLATV
TVCLTLAKRMARKNCLVKNLEAVETLSTSTICSDKTGTLTQNRMTVAHLWFDKTVYEADTSEEQTGK
TFPKSSDWFYLARIAGLCNRADFPHQESVPIAKRATTGDASESALLKFIQSYNPVSEMRQKNPKVAE
IPFNSTNKYQMSIHLLEDNSEAHVLLMKGAPERIFDFCSSFLLNGQEYPMDEEMKMDFNAYIELGGLGE
RVLGFCFLNLPNFSKGFQFNTDELNFPMENLCFAGLISMIDPPRTAVPDAVSKCRSAGIKVIMVTGDHP
ITAKAIAKSVGIISEGNDAEDIAARLNIPISQVNNKSVKAIIVHGSSELKDMESQQLDDILKSYKEIVFA
RTSPQQKLIIVEGCQRLGAIIVAVTGDGVNDSPALKKADIGIAMGITGSDVSKQAADMILLDDNFASIVTG
VEEGRILFDNLKKSIAAYTLTSNIPETPFLLFIILSIPLPLGTITILCIDLGTDMVPAISLAYESPESDI
MKRLPRNPKTDNLVNNRLIGMAYGQIGMIQALAGFFTYFVILAENGFKPLDLLGIRLYWDDTQLNDLEDS
YGQQWTYEQRKVVEFTCQTAFVISIVVQWADLIICKTRRNSLFKQGMKNKILIFGLLEETVLAFLSYV
PGMDVSLRMYPLKINWWFCALPYSVLIFVYDEIRKLIIRRRPGGWLEKETYY
```

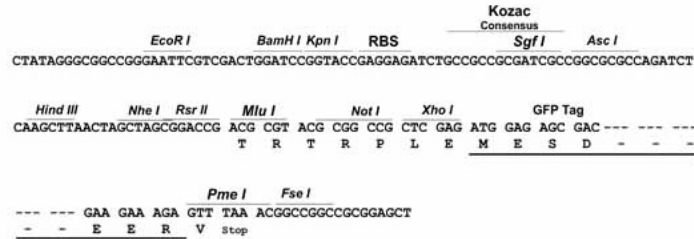
TRTRPLE - GFP Tag - V

Restriction Sites:

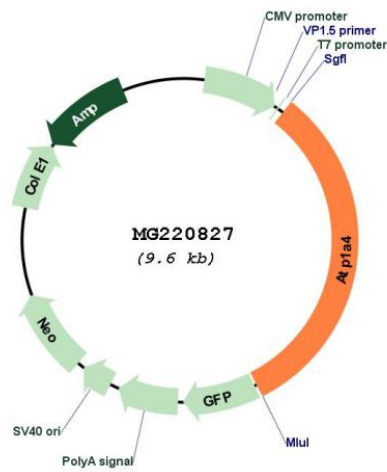
SgfI-MluI

Cloning Scheme:

Cloning sites used for ORF Shutting:



Plasmid Map:



ACCN: NM_013734

ORF Size: 3096 bp

OTI Disclaimer: Due to the inherent nature of this plasmid, standard methods to replicate additional amounts of DNA in E. coli are highly likely to result in mutations and/or rearrangements. Therefore, OriGene does not guarantee the capability to replicate this plasmid DNA. Additional amounts of DNA can be purchased from OriGene with batch-specific, full-sequence verification at a reduced cost. Please contact our customer care team at custsupport@origene.com or by calling 301.340.3188 option 3 for pricing and delivery.

The molecular sequence of this clone aligns with the gene accession number as a point of reference only. However, individual transcript sequences of the same gene can differ through naturally occurring variations (e.g. polymorphisms), each with its own valid existence. This clone is substantially in agreement with the reference, but a complete review of all prevailing variants is recommended prior to use. [More info](#)

OTI Annotation: This clone was engineered to express the complete ORF with an expression tag. Expression varies depending on the nature of the gene.

Components: The ORF clone is ion-exchange column purified and shipped in a 2D barcoded Matrix tube containing 10ug of transfection-ready, dried plasmid DNA (reconstitute with 100 ul of water).

Reconstitution Method:

1. Centrifuge at 5,000xg for 5min.
2. Carefully open the tube and add 100ul of sterile water to dissolve the DNA.
3. Close the tube and incubate for 10 minutes at room temperature.
4. Briefly vortex the tube and then do a quick spin (less than 5000xg) to concentrate the liquid at the bottom.
5. Store the suspended plasmid at -20°C. The DNA is stable for at least one year from date of shipping when stored at -20°C.

RefSeq: [NM_013734.1](#), [NP_038762.1](#)

RefSeq Size: 3485 bp

RefSeq ORF: 3099 bp

Locus ID: 27222

UniProt ID: [Q9WV27](#)

Cytogenetics: 1 79.54 cM

Gene Summary: This is the catalytic component of the active enzyme, which catalyzes the hydrolysis of ATP coupled with the exchange of sodium and potassium ions across the plasma membrane. This action creates the electrochemical gradient of sodium and potassium ions, providing the energy for active transport of various nutrients. Plays a role in sperm motility (By similarity). [UniProtKB/Swiss-Prot Function]