

## Product datasheet for **MG220814**

### **PPP2R3A (NM\_172144) Mouse Tagged ORF Clone**

#### **Product data:**

Product Type:	Expression Plasmids
Product Name:	PPP2R3A (NM_172144) Mouse Tagged ORF Clone
Tag:	TurboGFP
Symbol:	PPP2R3A
Synonyms:	3222402P14Rik; A730042E07
Mammalian Cell Selection:	Neomycin
Vector:	pCMV6-AC-GFP (PS100010)
E. coli Selection:	Ampicillin (100 ug/mL)



[View online »](#)

**ORF Nucleotide Sequence:**

>MG220814 representing NM\_172144  
 Red=Cloning site Blue=ORF Green=Tags(s)

TTTTGTAATACGACTCACTATAGGGCGGCCGGAATTCGTCGACTGGATCCGGTACCGAGGAGATCTGCC  
 GCC**CGCATCGCC**

ATGATGATCAAGGAAACGTCCTTGCAGGACCCGGATTTAAGGGGAGAGTTAGCTTTCCTAGCAAGGG  
 GCTGCGATTTTGTCTCCCATCACGTTTAAAGAAGAGGCTGAAGTCATTTAGCAGACACAGATTCAAAA  
 TAAACCAGAAAAGAAACCTGCAACATCATTCCACCTGCAGCCACCCCTCCAAGTAGTCCCGAGCCGGCC  
 TCCCTGTTCTTGTGTGAGTGTGTCGTAATACACCGTTGTCCATAAACATTCCACAGTTCTATTTCC  
 CTGAAGGACTCCAGACACCTGCAGTAACCATGAACAGATCCTAAGCAGAATTGAAACTGCTTCAAGGA  
 TATTGAAGATCAGAAAGCAGATATTCATGAAATGGGGAGAATTGCAAAGGTCTGTGGCTGTCCACTCTAT  
 TGGAAAGCCCCATGTTCAAGGCTGCAGGAGGAGAGAAGACTGGATTTGTGACAGCACAGTCATTCATTG  
 CCATGTGAAAAAGTTGTAAGTAACCGTCATGACGATGCTGCCAAGTTCATCTGGCTTCTGGCAAAGCC  
 CAGCTGCAGCTATCTAGAACAAGAGGATTTTATCCCTTTACTTCAGGATGTGGTAGATACCCACCCTGGC  
 CTCACCTTCTGAAAGATGCTCCAGAATCCATTCCTCCGCTACATACCACGGTTGTTAGAGAATATTCT  
 ACACAGTCAACAGATCTTGGAGTGGAAAAATTACTTCAACAGAGATAAGAAAAAGCAACTTTTTGCAAAAC  
 TCTGGCCCTTTTGGAGGAAGAGGAAGATATAAACCAAAACACAGATTACTTCTCTTATGAACATTTCTAT  
 GTCATTTATTGTAATTTGGAAGTAGATGGTGTGATGACTTGTACATCAGTCAAGCTGATCTGTCTC  
 GATACAATGACCAAGGCTTCATCAATAGAATTATTGAAAGAATATTTTCTGGAGCAGTAAACAAGAGGAAA  
 AACTGTACAAAAAGAGGGAAGAATGAGCTATGCAGATTTGTTTGGTTTTGATTTCTGAGGAAGACAAA  
 CGGAACCTACCAGCATTGAGTACTGGTCCGCTGCATGGATGGATGGAGATGGCATACTTTCCATGT  
 ATGAACTAGACTTCTATGAAGAGCAGTGTGAACGGATGGAAGCCATTGGCATTGAGCCCTTGCCGTT  
 CCATGATCTGTTGTGCCAGATGCTTACTTGGTGAAGCCAGCTAGTGATGGCAGAATAACTCTGCCGAT  
 CTGAAGAGGTGCAGAATGGCCACATCTTCTACGACACTTTCTTAACTGGAGAATACTTGGACCATG  
 AACAAAGAGATCCTTTTGCAGTCCAGAAGGATGTTGAAAATGATGGCCCTGAGCCATCTGACTGGGACAG  
 ATTTGCGGCTGAGGAGTACGAGGCTCTCGTAACTGAGGAGTCTGCCAGGTTCCAGCTCCAAGAAGGCTCA  
 TTTGAAGACTATGAATCAGATGAACCTGTATCTCCCTCTGAACTGGAACAAGGGCAATAAAATAGTAA  
 CTTCAAGCCTTTCAGAGAAATGTGGAAGCTTCAGTCAAGTGGATGAAGAG

**ACGCGTACGCGGCCGCTCGAG** - GFP Tag - GTTTAA

**Protein Sequence:**

>MG220814 representing NM\_172144  
 Red=Cloning site Green=Tags(s)

MMIKETSLRRDPDLRGELAFARGCDFVLPFRFKRKLKSFQQTQIQNKPEKKPATSFPPAATLPSSPQPA  
 SPVPCVSDVVNTPLSINIPQFYFPEGLPDTCSNHEQILSRIETAFKDIEDQKADIIHEMGRIAKVCGPLY  
 WKAPMFRAAGGEKTFVTAQSFIAMWKKLLSNRHDDAAKFIWLLAKPSCSYLEQEDFIPLLDVVDTHPG  
 LTFKDAPEFHSRYITTVVQRIFYTVNRSWSGKITSTEIRKSNFLQTLALLEEEEDINQITDYFSYEHFY  
 VIYCKFWELDGDHDLYSISQADLSRYNDQASSNRIIERIFSGAVTRGKTQVQKEGRMSYADFVWFLISEEDK  
 RNPTSIEYWFRCMDVDGDGILSMYELEYFEEQCERMEAMGIEPLPFHDLLCQMLDLVKPASDGRITLDR  
 LKRCRMAHIFYDTFFNLEKYLDEQRDPFAVQKDVENDGPEPSDWRFAAEEYEALVTEESAQVQLQEGS  
 FEDYESDEPVSPSELGNKGNKIVTSSLSEKCGKLQSVDEE

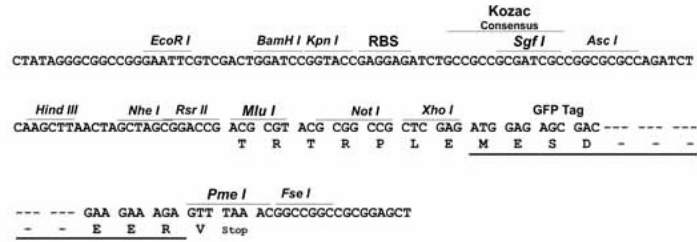
**TRTRPLE** - GFP Tag - V

**Restriction Sites:**

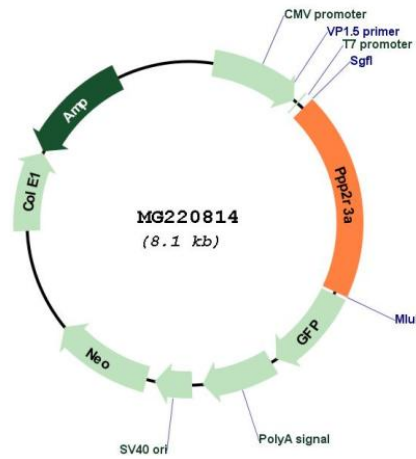
Sgfl-Mlul

Cloning Scheme:

Cloning sites used for ORF Shutting:



Plasmid Map:



ACCN:	NM_172144
ORF Size:	1590 bp
OTI Disclaimer:	The molecular sequence of this clone aligns with the gene accession number as a point of reference only. However, individual transcript sequences of the same gene can differ through naturally occurring variations (e.g. polymorphisms), each with its own valid existence. This clone is substantially in agreement with the reference, but a complete review of all prevailing variants is recommended prior to use. <a href="#">More info</a>
OTI Annotation:	This clone was engineered to express the complete ORF with an expression tag. Expression varies depending on the nature of the gene.
Components:	The ORF clone is ion-exchange column purified and shipped in a 2D barcoded Matrix tube containing 10ug of transfection-ready, dried plasmid DNA (reconstitute with 100 ul of water).
Reconstitution Method:	<ol style="list-style-type: none"><li>1. Centrifuge at 5,000xg for 5min.</li><li>2. Carefully open the tube and add 100ul of sterile water to dissolve the DNA.</li><li>3. Close the tube and incubate for 10 minutes at room temperature.</li><li>4. Briefly vortex the tube and then do a quick spin (less than 5000xg) to concentrate the liquid at the bottom.</li><li>5. Store the suspended plasmid at -20°C. The DNA is stable for at least one year from date of shipping when stored at -20°C.</li></ol>
RefSeq:	<a href="#">NM_172144.3</a> , <a href="#">NP_742156.2</a>
RefSeq Size:	4778 bp
RefSeq ORF:	1593 bp
Locus ID:	235542
Cytogenetics:	9 E4