

## Product datasheet for **MG220776**

### **Dcst1 (NM\_029974) Mouse Tagged ORF Clone**

#### **Product data:**

Product Type:	Expression Plasmids
Product Name:	Dcst1 (NM_029974) Mouse Tagged ORF Clone
Tag:	TurboGFP
Symbol:	Dcst1
Synonyms:	A330106H01Rik
Mammalian Cell Selection:	Neomycin
Vector:	pCMV6-AC-GFP (PS100010)
E. coli Selection:	Ampicillin (100 ug/mL)



[View online »](#)

**ORF Nucleotide Sequence:**

>MG220776 representing NM\_029974  
 Red=Cloning site Blue=ORF Green=Tags(s)

TTTTGTAATACGACTCACTATAGGGCGGCCGGGAATTCGTCGACTGGATCCGGTACCGAGGAGATCTGCC  
 GCC**CGGATCGCC**

ATGGCGTTCTCTCATCAACACTTCACAGCCTAGGGATCTTTGAAAAGATTTCCAGGATAAAAAGAGTTCT  
 TCAAGAATAGGCTGCTGGACCTTACAAAGCGTCGGGACCAAGCACGGGAGCAACAAAGGAAACGGCCCA  
 CACCATCATACAGGGGCTGCTCCTCTGGAGTCTTCCAGTTTCTGGATCCGGTCTGTGGCGACAGCCA  
 GGGGAGTTTCCAGTAAGTCTTCTGCTAGGAGCAGGCACTGGTGGGCTCCTGGCCATAGGTCTTTTC  
 AGCTCTTGGTGAATCCCATGAACATTTATGAGGAGCAGAAGGTGGTGGCGTTATACTGCTTGGAAGCTT  
 GGGGGCCATCGGCTGGGGCACCTCCCCTCACATCCGCTGTGCCAGTCTCCTGTTGGTACCCAAGATGCTG  
 GGCAAAGAAGGCAGACTCTTGTATGGGATATGCTTTGGCTGCTATCTACAGTGGGCGCGGCCAATC  
 TAAGGTCCAACATCAACGAGGTGATAGCATCCCTGGGCTGCACTGTGGAGCTGCAGATCAACAACACCCG  
 ATCCGCTGGCGAGTCTCCACAGCCCTCTGCGGGCAGTGTTCAGGGCATGGTGGGCAGCAAAGATTCA  
 TTGAATAAAGAGATTAGAACGCTCTACTCCTTTGAAGAGATGGATGAACAGGTGAAGAGTGATGCTG  
 GCTACTCATCTGAGGACTGGGACAAGAACAGAGAAAGCACAGAGATGTTCCGAACTCCCGCTCCGACC  
 CTACCTGTCCACACAGATGGTGTATGAGCTGAGGACCAGGCTACGCTGCATCCATGTAGTAAATAAGGCC  
 ATACTCAGCTGCTACCGTGGTTTGATAAAAAGCATAAAAAGTGCATGCGACGCATCCACCTCCCCTCT  
 TCAACAACATGATCTGTGTGCCAATGAAGTTCAAGTTCCTCTGTAACTTCCAAAGGTGATAGAGATCTG  
 GTGTTACAAACGCATCCCGTGGGAAAGCACTTTGGGCAAACCTATGACTCGGTCAACAGTCTATCCAT  
 GGACTGTCTGGAGATTTTCAGCCAATATTAACCTTAAGGAAGAGAAGCAGTCTTCAATGGTGGGTCTCA  
 ACACCAGAACTGGGAGCACATGGGCACCGAGGTGCGGGACTATGTTCCGACAGCAGGACCTATCTGCA  
 GTGGGCTATGGGCTGCTGCACGTCTTCTGCTGCTGCACGTTCTGCTGGTCTTCCATTCAGCCTTCTCC  
 TACATGGACCACTACAACCTGGGACATCCGCTTTGACAACATCTACATCAGCACCTACTTCTGTGAGATTG  
 ATGCACGCAGGAAGAAGCTGGGCAAACAGAGTCTGTTGCCACTCCGCAAGGCAGAAAGGAAAACGGTTAT  
 CTTCCCTTTCAAAGCTACTATCCAGGCCTGGGAAATGCGCTATGTGATAAGAGAGCTCCTAGAGACTCTG  
 CCTATTGTGCTGCTGCTCCTGGTGTGTGCGGATCGACTGGGCACTCTACTCTGTCTTTGACACCATCC  
 GCCAGCACTCTTTCGTGCAGTATTCCTTTGCAAGCAGTACAAGCTGGAGATAAAAAGTCGAGGGAGATT  
 CATACTCGCAAGCTTCTTCGTAACCATCGGCGCTCTGAACACCTCCTCGAGTACAGATGTGAAACA  
 AACAACATGCCCTGCCTGCCCAACCCATTAGCCTGAATGCCAGGGATTACTTCAAGGCCTCACTGCCAA  
 CCCTCCTGCTTGTGTCTCTGCTAGCTCAGGCCTTTGGCTACCGACTCCGGAGAGTATCGCAGCCTT  
 CTATTTCCCAAGCGAGAGAAGAAGCGGCTCTGTTCTTCAATGAGTTCCTGAAGAAGAGATCAGCT  
 TTCCTAACTGAGGAGGGCCGCAATTGTTCCGAGGGCAAATCAGCAGAAGGCTCCACCCCACTACCTGG  
 TGGAGGCTCTGTATCGCCGGTGCCTCTCCTGCACCGTTCATGCGTCAGCGCTGTGTGGTGTGCCAGGC  
 AATGGAGACGCCGATTCTACGTGTGCCCCACACCAAGGCTGCAAGGCCCTGACTGCCGGTCTGTGCTGG  
 GACGACATGCAACGGCTCTGCCCGGTGTGCACGCCCGCAAGAGCTCTCGTCATCCGCCACAGCGACA  
 GCAACGACGACGCTGTGTATGGCGAT

**ACGCGT**ACGCGGCCGCTCGAG - GFP Tag - GTTTAA

Protein Sequence: >MG220776 representing NM\_029974  
 Red=Cloning site Green=Tags(s)

MAFLSSTLHSLGIFEKISRIKEVLKNRLDLTKRRDQAREQQRKRPHITIIQGLLLWSPVSWIRFLWRQP  
 GEFPVTAFLGAGTGGLLAIGLFQLLVNPMNIYEEQKVVALYCLASLGAIGWGTSPHIRCASLLLVPKML  
 GKEGRLFVMGYALAAIYSGPAANLRSNINEVIASLGCTVELQINNTRSAWRVSTAPLRAVFKGMVGSKDS  
 LNKEIQNVSTSFEEEMDEQVKSADAGYSSDWDKNRESTEMFGTSRVRPYLSTQMVVELRTRLRCIHVVNKA  
 ILSCYRWFDDKKHKNCMRRIHLPFNMICVPMKFKFLCNIAKVIEIWCYKRIPVEGNFGQTYDSVNQSIH  
 GLSGEFSANINLKEEKQSSMVGLNTTNWEHMGTEVRDYVRQETYLQWAMGLLHVLLSCTFLLVFHSAFS  
 YMDHYNWDIRFDNIYISTYFCQIDARRKLGKQSLPLRKAERKTVIFPFKATIQAEMRYVIRELLET  
 PIVLLLLVLCADWALYSVFDTRQHSFVQYSFRSSHLEIKVEGDSILAKLLRKTIGALNTSSSTDVET  
 NNMPCLPQPI SLNARDYFKASLPTLLL VCLCLAQAFGYRLRRVIAAFYFPKREKKRALFFYNEFLKKRSA  
 FTKLRAAIVRRANQQKAPPHYLVEALYRRCPLLRHFRMRQRCVVCQAMETPDSYVCPDCKALYCRSCW  
 DDMQRCLCPVCTPREELSSSAHSDSNDDAVYGD

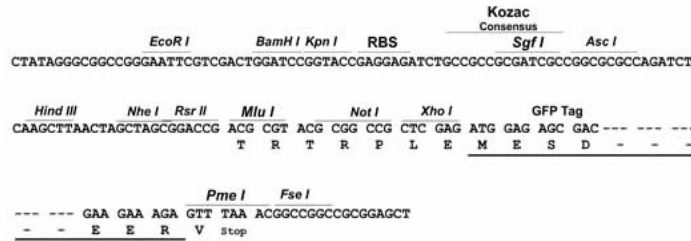
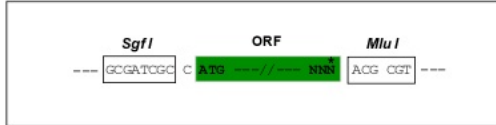
TRTRPLE - GFP Tag - V

Restriction Sites:

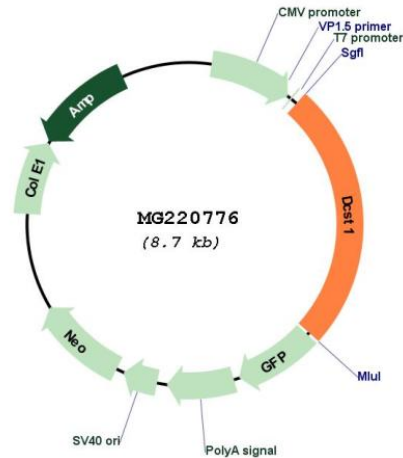
SgfI-MluI

Cloning Scheme:

Cloning sites used for ORF Shutting:



Plasmid Map:



ACCN: NM\_029974

ORF Size: 2196 bp

OTI Disclaimer: The molecular sequence of this clone aligns with the gene accession number as a point of reference only. However, individual transcript sequences of the same gene can differ through naturally occurring variations (e.g. polymorphisms), each with its own valid existence. This clone is substantially in agreement with the reference, but a complete review of all prevailing variants is recommended prior to use. [More info](#)

OTI Annotation: This clone was engineered to express the complete ORF with an expression tag. Expression varies depending on the nature of the gene.

Components: The ORF clone is ion-exchange column purified and shipped in a 2D barcoded Matrix tube containing 10ug of transfection-ready, dried plasmid DNA (reconstitute with 100 ul of water).

Reconstitution Method: 

1. Centrifuge at 5,000xg for 5min.
2. Carefully open the tube and add 100ul of sterile water to dissolve the DNA.
3. Close the tube and incubate for 10 minutes at room temperature.
4. Briefly vortex the tube and then do a quick spin (less than 5000xg) to concentrate the liquid at the bottom.
5. Store the suspended plasmid at -20°C. The DNA is stable for at least one year from date of shipping when stored at -20°C.

RefSeq: [NM\\_029974.2](#), [NP\\_084250.1](#)

RefSeq Size: 2312 bp

RefSeq ORF: 2199 bp

Locus ID: 77772

UniProt ID: [Q059Y8](#)

Cytogenetics: 3 F1

Gene Summary: This gene encodes a transmembrane protein. A similar gene in human has been associated with dendritic cells. [provided by RefSeq, May 2015]