

Product datasheet for **MG220765**

Sp100 (NM_013673) Mouse Tagged ORF Clone

Product data:

Product Type:	Expression Plasmids
Product Name:	Sp100 (NM_013673) Mouse Tagged ORF Clone
Tag:	TurboGFP
Symbol:	Sp100
Synonyms:	A430075G10Rik
Mammalian Cell Selection:	Neomycin
Vector:	pCMV6-AC-GFP (PS100010)
E. coli Selection:	Ampicillin (100 ug/mL)



[View online »](#)

ORF Nucleotide Sequence:

>MG220765 representing NM_013673
 Red=Cloning site Blue=ORF Green=Tags(s)

TTTTGTAATACGACTCACTATAGGGCGGCCGGAATTCGTCGACTGGATCCGGTACCGAGGAGATCTGCC
 GCC**CGCATCGCC**

ATGGAAGGGAGCGACGGCAGCCCCAGGATGTCCACTGAACAGGAGAACACAGAGATGCATCTCATTGAAT
 GTATGTTAAAGCACTTCAAGACACAGAAAAGTGGCCATTTCTAATGCGATAAGAAGTACATTTCTTTTCT
 TGAGAGCCTCCGAGACCATGAATTCATCACTGGTAAAAATGTATGAAGATTTGCTAGATTCCTGTAGATCG
 CTGGTCCCTGTGGACAAAGTGATCTACAGAGCCCTGGAGGAAGTGGAGAAGAAAATTTGACATGACGGTAC
 TGTGCGAATTGTTCAATGAGGTCAACATGGAGAAGTACCCCGATTTGAATCTCATTTCGTAGAAGCTTTGG
 ATGTGTGTTTTCCAATGAATTGTGTTTCCAAGGAATTGATGGAGGGAACCCAACTCCAGCTAAGTCTT
 GAACAAGGACCTGGTCCAGCTATTCTCAAGGAAGCCCGAATGGGTCATCCTTAGATCTCTCCGCATCTG
 AAGGCTGGAGAAGTAATGATAGAAGAAATCCAACCTCATGCAGGCAAACCAAAGTGAATCATCAGCT
 TGCCGAATCACCAGGTCACCTTGATTCTGTGAAGTCCAAGTCCAAGTGAATAACAGAGATGCTACCCCA
 GAGTCTTGACGCCTATTGCCTCAGAATGAAGAAAGAGCTGTGCAACTCAACTATGAACTCCAGATTAATC
 CCTGTTTTGTGCAACTGGTAGATGTAAAGAAGGAAAATTCATCATTTTCTTTGGCTGGTAACCAACAAAAC
 CCGAGCAAGGACCAACAAAATGAGGACTCTGAGATAATAGAAGTCAAGCAGTGGGGATTCTGATAATGGA
 GAGAAGTCTCAGAAGCTACAACCACAGTCCCCTCCAGCCAGCACCTGCATATTCAGAAAACCTCCAA
 CACTGAGAAGAGACAGAGGAGGAGATACTTCTGACACTGAGAGCTCTATCATCATTAGAAGACGGAAAAG
 GACAGGACGGAAAAGAGAGAGAGACTTGAAGCTACTTAATACGGAACATCAAAATCCCAATGAAACCA
 AGCTGGAAAACAGCTTTCTAGCAAGAAGTCCCAATCCTTCTTCAACACGACGCAGAAAAGAGGTCGGA
 GAATCCCAGAGAAGAAAATGCGGATTTTGGAGGAGCTGAGCTTCTGTGGTATGTGGCAACGCTCAGGG
 CTTCTGGATAAAGGAGAAATTTAAGCAAGGCATCTATGTGAGGAGTATACGGGGCAAGACAGGGCGGTTA
 TCACTCCCATGGACTTTGAAATCGAAGGAAAAGTGTGAAAAGCCAAAGAACTGGCGGCAAAAGCATCCGCT
 GCAAGGGATGGACCCTGAGAGAAGTGTACAGAAAAGGAGTACTACAAGACCCACCAAGGAAAAGAGGA
 AACTCCACGAAACCAAGGCAAAACAGGAGACAGAAATGTGAAGTCTTCTTTTACTATCTATTGCTAT
 CCAAAAAGTGGCTTTTTATCCCAAAACCAAGCAAGGAAAAGAGAAGTTTCCAGACCTCCGGGAGCACA
 TGTGGTTAAACAAAATCAAGAATAGGCTGAATAAGAAGGCATACCATTCCGTACGACGCTTTGTGGAGGA
 CATGCGCCTCATTTTCAACACACAGCATATTTATAAAAAAGGTTCAAAAATCTTGGAAATCATAGTA
 GAAAAGAAATTTGAGAAGATTTCAAAGGATTTTTTCAATCGAGGATACAAGCGAGCAACATGAACCGT
 GCAACCACACCGTTTTGTTAAC

ACGCGTACGCGGCCGCTCGAG - GFP Tag - GTTTAA

Protein Sequence:

>MG220765 representing NM_013673
 Red=Cloning site Green=Tags(s)

MEGSDGSPRMSTEQENTEMHLIECMLKHFKTQKVAISNAIRSTFPFLESRLRDFEITGKMYEDLLDSCRS
 LVPVDKVIYRALEELEKKFDMTVLCELFNEVNMEKYPDLNLIIRRSFGCVFPNELCFQIGDGGNPNSQLSL
 EQGPGASYSQGSPPNGSSLDLASEGWRSNDRRNSNLMQANQNTENHQLAESPGHLDSELCVQLNRRDAP
 ESCSLLPQNEERAVQLNYELQINPCFVQLVDVKKENSSFSLAGNQQRARTNQNEDESEIIEISSGSDNG
 ENFSEATTTVPSQPAPAYSRRKPPTLRRDRGGDTSDTESSIIIRRRKRTGRKKRERLGSYLIRNIKIPMKP
 SWKTAFLARSANPSSQRRRKRGRIPREENADFGGAELPVVCGNAQGFLDKEKFKQGIYVRSIRGKTGRL
 FTPMDFEIEGNCEKAKNWRQSIKCKGWTRELIQKGVLDPPRKKKETPRNPRQTRRQKCELLLLTIYCY
 PKSGFFIPKPKQRKEKFPDLREHMWLNKIKNRLNKKAYHSVRRFVEDMRLIFHNHSIFYKRFKNLGIIV
 GKKFEKNFKRIFSIEDTSEQHEPCNHTVLLT

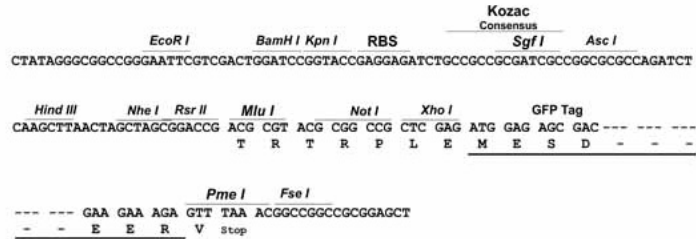
TRTRPLE - GFP Tag - V

Restriction Sites:

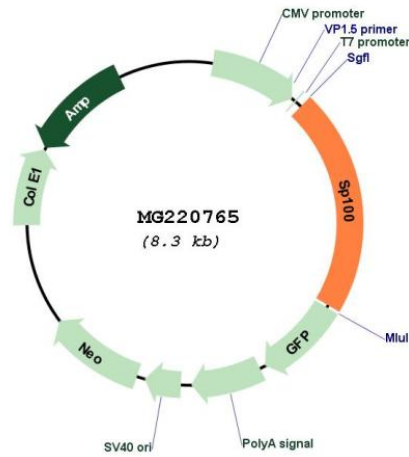
Sgfl-MluI

Cloning Scheme:

Cloning sites used for ORF Shutting:



Plasmid Map:



ACCN: NM_013673

ORF Size: 1773 bp

OTI Disclaimer:	The molecular sequence of this clone aligns with the gene accession number as a point of reference only. However, individual transcript sequences of the same gene can differ through naturally occurring variations (e.g. polymorphisms), each with its own valid existence. This clone is substantially in agreement with the reference, but a complete review of all prevailing variants is recommended prior to use. More info
OTI Annotation:	This clone was engineered to express the complete ORF with an expression tag. Expression varies depending on the nature of the gene.
Components:	The ORF clone is ion-exchange column purified and shipped in a 2D barcoded Matrix tube containing 10ug of transfection-ready, dried plasmid DNA (reconstitute with 100 ul of water).
Reconstitution Method:	<ol style="list-style-type: none">1. Centrifuge at 5,000xg for 5min.2. Carefully open the tube and add 100ul of sterile water to dissolve the DNA.3. Close the tube and incubate for 10 minutes at room temperature.4. Briefly vortex the tube and then do a quick spin (less than 5000xg) to concentrate the liquid at the bottom.5. Store the suspended plasmid at -20°C. The DNA is stable for at least one year from date of shipping when stored at -20°C.
RefSeq:	NM_013673.4 , NP_038701.2
RefSeq Size:	2158 bp
RefSeq ORF:	1776 bp
Locus ID:	20684
Cytogenetics:	1 43.6 cM
Gene Summary:	Together with PML, this tumor suppressor is a major constituent of the PML bodies, a subnuclear organelle involved in a large number of physiological processes including cell growth, differentiation and apoptosis. Functions as a transcriptional coactivator of ETS1 and ETS2. Under certain conditions, it may also act as a corepressor of ETS1 preventing its binding to DNA. Through the regulation of ETS1 it may play a role in angiogenesis, controlling endothelial cell motility and invasion. Through interaction with the MRN complex it may be involved in the regulation of telomeres lengthening. May also regulate TP53-mediated transcription and through CASP8AP2, regulate FAS-mediated apoptosis. May also play a role in infection by viruses through mechanisms that may involve chromatin and/or transcriptional regulation (By similarity).[UniProtKB/Swiss-Prot Function]