

## Product datasheet for **MG220745**

### **Sppl2c (NM\_199019) Mouse Tagged ORF Clone**

#### **Product data:**

Product Type:	Expression Plasmids
Product Name:	Sppl2c (NM_199019) Mouse Tagged ORF Clone
Tag:	TurboGFP
Symbol:	Sppl2c
Synonyms:	4933407P14Rik; IMP5
Mammalian Cell Selection:	Neomycin
Vector:	pCMV6-AC-GFP (PS100010)
E. coli Selection:	Ampicillin (100 ug/mL)



[View online »](#)

ORF Nucleotide  
Sequence:

>MG220745 representing NM\_199019  
 Red=Cloning site Blue=ORF Green=Tags(s)

TTTTGTAATACGACTCACTATAGGGCGGCCGGGAATTCGTCGACTGGATCCGGTACCGAGGAGATCTGCC  
 GCC**CGGATCGCC**

ATGGCATGCCTGGGTTCCCTCCACCCCTTGGGCTCACTCCTCCTCCTCCTCCTCCTCCTCCTCCTCAGCC  
 CCGAGGCCCGGGGAGAATACGGCCTGGTCCGAGTCGTGTCAAAGAAGTGGAGCAAGGACTACTGTGTCT  
 GTACAGCTCTGACTACGTCAACCTCCCCGGGACCTGCACCATGCCCCACTTCTGTCCCTGCATGATGGC  
 ACCAAGACACCCTGGTGTCCAGATGAAGACTCTTCCACCAGGCCAGGACAGTCCCTAGACAGCGAC  
 CCCTGCACCAGACTACTACCATGGTCACGCGTGGCAACTGTAGCTTCTATGCCAAGGGCTGGCTGGCTCA  
 AGATCAAGGGCGCCAGGGGTTGCTCATTGTGAGCCGGCCAGGAATCAACAGTGTTCAGACACCATCTCA  
 AAGCCCCAGGACCCAGCAAGCCCTGGCCTGCCCTCACCATCCCAGTGGCCGTGCTCCGCTACACTGACA  
 TGTTGGACATTGTCAGCCACACTTACGGTGACACCGATGTCGAGTAGCCATGTTTGACCCCTCGAGCC  
 TGTTACTGACTATAACATGGCGATTATCTTCATCTTGGCAGTGGGTAAGTGTGCTCAGGTGGCTACTGG  
 GCTGGTTTGATGGAGGCAACAAGCTGCAGAGGCCAGGCCAAAGAGGAGGGGGCTTGGTGGTCACA  
 ATCAACAACAACAGTGGCAGCTGAGAGGTCCAAAGGGCCTGGGAAGATGACGACTTTGAAGATGCACC  
 TATGGATTTACACCAGCCATGACGGGCGCTGTGGTCACCATGTCCTGCTCCATCATGATCCTGTGTAT  
 TTTTCTATGACTGCTTTGTCTACGTATGATTGGGATCTTAGCCTGGGTGCCAGTACCGGCCCTTACA  
 GCTGCCTGGCACCACTACTGTGCCACCTGCCCTATGGGATACCAAGTGGTCTTGCCTGGACAACGGGT  
 TTCTGTAACATGGCCATTACTACTGTGGCAGGCTGTGTGCCATGGTACTGCTCCTCTGGGTCAATCCAC  
 CGAAATGAGGACCATGGGCATGGCTCTGCAGGACACTTGGGTGTCGCTACTGCCTTTTGTCTCTGA  
 GGCGGGTACGGCTGCCACGTTCAAGAAGTGCCTTTGTTCTGCTGGCCCTACTAGCCTTCGATGTCTT  
 CTTTGTCTTTATCACTCCCTGTTCAACAAGACTGGTGAGAGCATTATGGTAGAAGTGGCATCAGGTCCA  
 GCAGATTCTTCAAGCCACGAGAGGTTACCAATGGTGTCAAGGTGCCCGGCTAAGCTTTTCCGCCTTGA  
 CGTTGTGCAACCAGCCCTTCTCCATCCTTGGCTTTGGGACATTGTTGTCCCTGGCTTCTAGTGGCCTA  
 CTGTCACCGCTTCGACATGCAAGTCCAATCTCGCCAGGTCTACTATATGGCCTGTACAGTGGCCTATGCC  
 GTGGGCTGCTGGTACCTTTGTGCGCATGATCCTCATGCAGATGGGCCAGCCTGCCCTGCTCTACTTAG  
 TGTCCAGCACTCTGCTCACCAGCCTTGTGTGGCCACCTGCCCAAGAGTTCACCCTTTTCTGGACTGG  
 CCAGGGCAGAGCCAAGATTCTGCTGAGCCTGTGGCACAGCCCTGCATTGCCTGCTGTGGGCTCCAAG  
 ATGAAGCTGGAGGATGCGAAGGATTCCTGTACAACCAACAGGTTTGGAGCAGGCCGTTGATGGAGAGTCAG  
 GGGACTTAGAGAGCAGCACTGGGACGATATGGCAGAGATGGTACCCTATCTGAGGATGAAGCCACGAG  
 TCCAGAGGGCCACAGCGAGATTCTGAGGGCTGGAGTGACACCAACCTGGACCCCAATGAGCTACCTCT  
 GGCTCCCCATGGCCCTAGAGGCCATGTTGATCCCACTGATCCAACCAATCCCACACCCCTCCGAGCTGG  
 GCCACATCCGCACTCAATCTCGGGTCCATGATAGCAGCCTGCCCTGGATGGGGTTGCACAAGAGAAAGGG  
 CTTGAAGGTGAAGAAGAGTATGTCAGCCAGGCTCCCCTA

AG**CGGACCG**ACGCGTACGCGGCCGCTCGAG – GFP Tag – GTTTAA

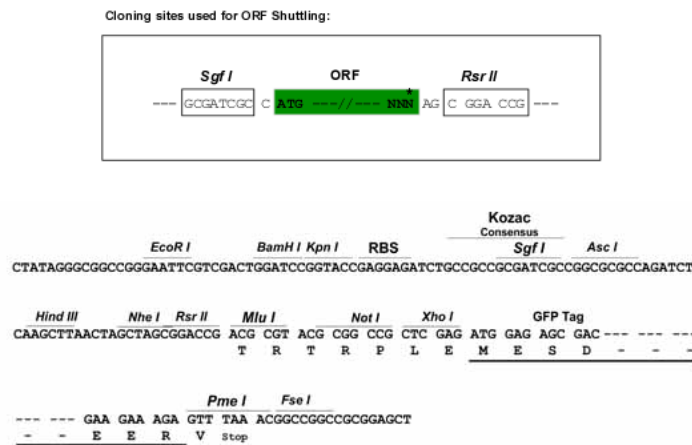
Protein Sequence: >MG220745 representing NM\_199019  
 Red=Cloning site Green=Tags(s)

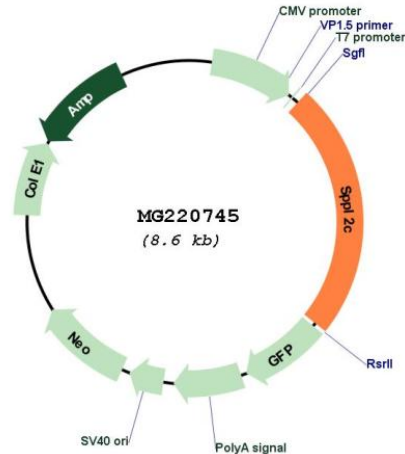
MACLGSLHPLGSLLLLFLLLLLSPEARGEYGLVRVVSKNWSKDYCVLYSSDYVNLPRDLHHAPLLSLHDG  
 TKTPWCPDEDSFHQAQDSSPRQRPLHQTTMTVTRGNCSFYAKGWL AQDQGAQGLLIVSRARNQQCSDTIS  
 KPQDPSKPWPAL TIPVAVLRYTMDL DIVSHTYGD TDVVRVAMFAPLEPVT DYNMAIIFILAVGTVAAGGYW  
 AGLMEANKLQRRQAQRGGGLGHNQQQTVA AERSQRAWEDDD FEDAPMDFTPAMTGAVVTMSCSIMILLY  
 FFYDCFVYVMIGIFSLGASTGLYSCLAPILCHLPLWRYQWVLPGQRVSVTWPLLLL LAGLCAMVTVLWVIH  
 RNEDHWAWLLQDTLGVAYCLFVLRVRRLPTFKNCTLFLLALLAFDVFFVFITPLFTKTGESIMVEVASGP  
 ADSSSHERLPMVLKVPRLSFSAL TLCNQPF SILGFDIVVPGFLVAYCHRFD MQVQSRQVYYMACTVAYA  
 VGLLVTFVAMILMQMQP ALLYLVSSTLLTSLAVATCRQEFTLFWTQGGRAKIPAEPVAQPCIASAVGSK  
 MKLEDAKDSRTTNRFEQAVD GEGSGLDESSTGDDMAEMVTLSEDEATSP EGHSESSEGSWSDTNLDPNELPS  
 GSPMALEAMLIPLIQIPHPSELGHIRTQSRVHDS SLPWMGLH KRKGLKVKKSMSAQAPL

SGPTRRRLE - GFP Tag - V

Restriction Sites: SgfI-RsrII

Cloning Scheme:



**Plasmid Map:**


**ACCN:** NM\_199019

**ORF Size:** 2070 bp

**OTI Disclaimer:** The molecular sequence of this clone aligns with the gene accession number as a point of reference only. However, individual transcript sequences of the same gene can differ through naturally occurring variations (e.g. polymorphisms), each with its own valid existence. This clone is substantially in agreement with the reference, but a complete review of all prevailing variants is recommended prior to use. [More info](#)

**OTI Annotation:** This clone was engineered to express the complete ORF with an expression tag. Expression varies depending on the nature of the gene.

**Components:** The ORF clone is ion-exchange column purified and shipped in a 2D barcoded Matrix tube containing 10ug of transfection-ready, dried plasmid DNA (reconstitute with 100 ul of water).

**Reconstitution Method:**

1. Centrifuge at 5,000xg for 5min.
2. Carefully open the tube and add 100ul of sterile water to dissolve the DNA.
3. Close the tube and incubate for 10 minutes at room temperature.
4. Briefly vortex the tube and then do a quick spin (less than 5000xg) to concentrate the liquid at the bottom.
5. Store the suspended plasmid at -20°C. The DNA is stable for at least one year from date of shipping when stored at -20°C.

**RefSeq:** [NM\\_199019.2](#), [NP\\_950184.2](#)

**RefSeq Size:** 2225 bp

RefSeq ORF: 2073 bp

Locus ID: 237958

UniProt ID: [A2A6C4](#)

Cytogenetics: 11 E1

Gene Summary: Intramembrane-cleaving aspartic protease (I-CLiP) that may be able to cleave type II membrane signal peptides in the hydrophobic plane of the membrane.[UniProtKB/Swiss-Prot Function]