

Product datasheet for **MG220741**

Mef2b (NM_008578) Mouse Tagged ORF Clone

Product data:

Product Type: Expression Plasmids
Product Name: Mef2b (NM_008578) Mouse Tagged ORF Clone
Tag: TurboGFP
Symbol: Mef2b
Synonyms: 17259; AI451606
Mammalian Cell Selection: Neomycin
Vector: pCMV6-AC-GFP (PS100010)
E. coli Selection: Ampicillin (100 ug/mL)
ORF Nucleotide Sequence: >MG220741 representing NM_008578
 Red=Cloning site Blue=ORF Green=Tags(s)

TTTTGTAATACGACTCACTATAGGGCGCCGGGAATTCGTCGACTGGATCCGGTACCGAGGAGATCTGCC
 GCC**CGATCGCC**

ATGGGGAGGAAAAAATCCAGATCTCACGAATTCTAGACCAAAGGAACAGGCAGGTGACTTTCACCAAGC
 GCAAGTTCGGACTGATGAAGAAGGCTTATGAGCTGAGCGTGCTTTGTGACTGCGACATTGCCCTGATCAT
 CTTCAACAGCGCGCAACGCCTCTCCAGTATGCGAGCAGCGACATGGACCGGTGCTGCTCAAATACACC
 GAGTACAGTGAGCCGCACGAGAGCCGACCAACCGGATATCCTTCAGACACTGAAGAGGAGGGCGTGG
 GCCTTGATGGGCCGAGCTGGATATGGAGGAGGGGCCAGAAGTCTGGAGAGAAGCTGCTGAGGACACT
 GGGGGGTGACAGAGGCTCGGCCTCGCCCCGCCTCGGATCTATCCCGTGGCCCCGCAATGTCGGTTTCA
 GAGCTGTCTACCGGTCCCACCAGCCACTCCAGGCTGTGATCCTGGCGGGTGGGGAGGCCCGTCTG
 TCCACAGCCGCCCGCTCACTTTCGACCCCGGGCCTGGGACACCCGATCTTCTCTCCAAGCCACCTTGC
 GAGCAAGACGCCCCGCCTGTACCTGGCGACTGATGGCGGAGGCCAGACCTGCCCCCTGGCCTGGTT
 GGTGCCGAGGGGATTGGGCACCTCAAGAAGCCTGTACAGCGGCCTGCAGAGTCCCGGTGCCACAGGC
 CCGCTCTGGGTAGCTTTGCCTTACCATCAGGCTCCACAGATTGCAGCCCGGAGACGCAGCTCAGGG
 ACCCTGCAACCTCACCTGGCCACCAACGAGGACGCTGTAGACCCCGCCCGCCAGTTGCCCGCAGT
 CTGTGCAAGGAGGTCCCCAGCCGAGGGCCCTCCCTCCGACACCTCCGGTCAGCATCAAGTCTGAGC
 GACTGTCTCCAGTCACTGGACCTCTGGCGACTTCCCCAGGTCTTCCCTACCCGCTGCTCCTTGCCAG
 GCCCTTGACAGGCCACTGCGGCCCTCGGCCTCCCTGCACCGCTTGACCCCTGACAGCTGGCCACGG

ACGCGTACGCGGCCGCTCGAG - GFP Tag - GTTTAA



[View online »](#)

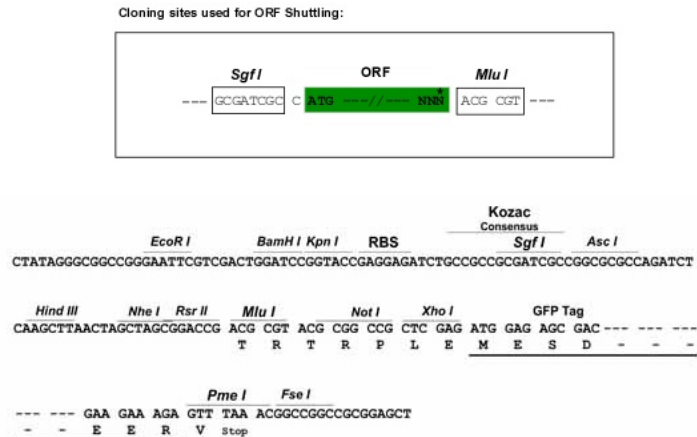
Protein Sequence: >MG220741 representing NM_008578
 Red=Cloning site Green=Tags(s)

MGRKKIQISRILDQRNRQVTFTRKRFGLMKKAYELSVLDCDIALIIFNSAQRLFQYASSMDRVLKKT
 EYSEPHESRTNADILQTLKRRGVLDGPELDMEEGPEGPEKLLRTLGGDRGSASPPPRIYPVAPAMSVS
 ELSYRVPPATPGCDPGLGEAPSVHSRPPHFRPPGLGHPIFSPSHLASKTPPPLYLATDGRRPDLPPGLV
 GARGGLTSRSLYSGLQSPGAPGALGSFAFLPSGSTDCSPGDAAQGPLQSPWPPTRDVDPARPVARS
 LCKEGPPSRGASPTTTPVSIKSERLSPVTGTSGDFPRSFPYPLLLARPLAEPLRPSASLHRLTPDSWPR

TRTRPLE - GFP Tag - V

Restriction Sites: SgfI-MluI

Cloning Scheme:



ACCN: NM_008578

ORF Size: 1047 bp

OTI Disclaimer: The molecular sequence of this clone aligns with the gene accession number as a point of reference only. However, individual transcript sequences of the same gene can differ through naturally occurring variations (e.g. polymorphisms), each with its own valid existence. This clone is substantially in agreement with the reference, but a complete review of all prevailing variants is recommended prior to use. [More info](#)

OTI Annotation: This clone was engineered to express the complete ORF with an expression tag. Expression varies depending on the nature of the gene.

Components: The ORF clone is ion-exchange column purified and shipped in a 2D barcoded Matrix tube containing 10ug of transfection-ready, dried plasmid DNA (reconstitute with 100 ul of water).

Reconstitution Method:

1. Centrifuge at 5,000xg for 5min.
2. Carefully open the tube and add 100ul of sterile water to dissolve the DNA.
3. Close the tube and incubate for 10 minutes at room temperature.
4. Briefly vortex the tube and then do a quick spin (less than 5000xg) to concentrate the liquid at the bottom.
5. Store the suspended plasmid at -20°C. The DNA is stable for at least one year from date of shipping when stored at -20°C.

RefSeq: [NM_008578.2](#), [NP_032604.2](#)

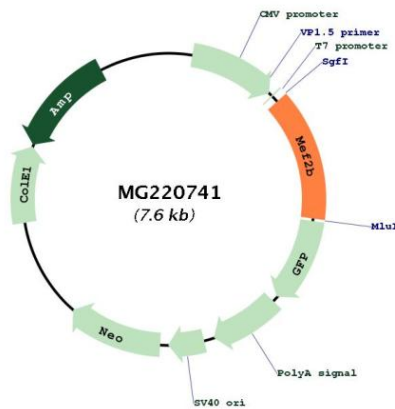
RefSeq Size: 1378 bp

RefSeq ORF: 1050 bp

Locus ID: 17259

Cytogenetics: 8 34.15 cM

Product images:



Circular map for MG220741