

Product datasheet for **MG220718**

Kif12 (NM_010616) Mouse Tagged ORF Clone

Product data:

Product Type:	Expression Plasmids
Product Name:	Kif12 (NM_010616) Mouse Tagged ORF Clone
Tag:	TurboGFP
Symbol:	Kif12
Mammalian Cell Selection:	Neomycin
Vector:	pCMV6-AC-GFP (PS100010)
E. coli Selection:	Ampicillin (100 ug/mL)



[View online »](#)

ORF Nucleotide Sequence:

>MG220718 representing NM_010616
 Red=Cloning site Blue=ORF Green=Tags(s)

TTTTGTAATACGACTCACTATAGGGCGGCCGGAATTCGTCGACTGGATCCGGTACCGAGGAGATCTGCC
 GCCCGCATCGCC

ATGGAGGAACGTGGTCTCCCGATGGAGACCCAGCACGGAACCTGGAGCAAGGGCCAGAAGGATCAGAAA
 CTCCCATTCAAGTGGTGCTCAGGGTGCCTCCCATGAGCACAGTGGAGCTGCGTCGAGGGGAGCAGAGTGC
 ATTGCACTGTTCCGGGACCAGGACTCTGCAGGTGAGCCCCGATGTGGCGTTCCGCTTTGGCGCCGTA
 GACGGGGCGGCACGCAGGAGGACGTGTTAGAGCTTGCAGTGTGAAGCGCCTGGGTGAGCTGGCGCTGC
 GCGGTTTCTCCTGCACGGTCTTACGTTTGGCCAGACTGGTTCTGGGAAGACCTACACTCTGACTGGACC
 TCCTCCGAGGGGAAGGGTGCCTCCCAAGCCTGGTGGCATCATGCAGAGGACCTTACCTGG
 CTATTAGATCGCGTGCAGCACCTGGATTCCCCGGTACCCTCCGAGCTTCTACCTGGAGATCTACAATG
 AGCAGGTTTGGACTTGTGAGTCTGGGTCTCCACGGCCTCGCTGTTAGATGGACCAAGGCACGAGG
 CTTCTATGTGGAACAGCTTCGGGTGGTGGAGTTTGGCAGTCTGGAGGCTTTGATGGAGCTCTGCAGATG
 GGTCTCAGCCGTCGTCGAGCTCCTCACATACCTGAACCAAGGCTCCAGCAGAAGCCATGCCCTGCTTA
 CACTCCACATCAGCCGCCAACTTCTCAGCAGGTACCTCCTGTGGACCTTGGGGAGCCCCCTGTTGGAGG
 GAAGCTGTGCTTTGTGGATCTTGCAGGCAGTGAGAAAGTGGCAGCCACAGGATCCCAAGGGCAGCTGATG
 CTTGAGGCCAATAGCATCAACCGCAGCCTATTGGCATTGGGCCACTGCATCTCCCTGCTGTTGGACCCAC
 AGAGGAAGCAGAACACATTCCCTTCCGGGACAGCAAGCTCACCAAGTTGCTGGCAGACTCACTTGGGGG
 CCGTGGGTACACTCATGGTTGCTGCGTGTCCCCTTACGCGCAGTGCCTTCTGAGACTCTCAGCACT
 CTGCGCATGCAAGCCGAGCTCAGCGGATCACCACCGGCCACAGGTCCTCAAGTCCCCTGGAGTAAAGC
 CACCCAGCAAGTAGAGAACGAGTTGCTAAGGCTCCAAGAGGAGAATCGTACCTGCGGTTCCAGCTGGA
 TCAGATGCACACCACGGCACAGGGGCCATGGAGCCCGATGGCTGGGCCAGAGAAACCTCTATGGG
 ATGCTGCAGGAGTTTATGCTGGAGAACGAGAGGCTCAGGAAGGAAATGAGACAGCTGAGGAGTAGCCGGG
 ACCTGGCCCGGCAGAGCAGCGTGTCTGGCCCAACAGGTCCATGATCTGGAGAGGCGCCTCCTTTCGGC
 TTGTCCCCTTCCCAGCAGGGCTCTACCCTGTGTGCTCCTGCAGGATGGTTCCAGCTGCCTCCTGCCAT
 GCACTGCCACCCCTCTGTACTGCCACCACTTCTGTCTCTGTGCCGAGTGCCCTTGGCCCACTGGACCT
 GCCCAGGAGAGAGTGCCACATGCCACAGGTGCTGGAGCCGAGGCCCCAGGTCACATATCTCAGTCTGT
 GTGGCCCCACCCTGGGACCTCCACCAAGCCAGGCTCTGCCAAGCCCCACGAGAGAGGAGCCAGAGT
 GACTGGACCCAGACAGTCTTGGCAGAGATGCTGATGGGAGAAGAAGTGGTACCCTCCGACCCACCC
 TGTCTGCAGGGCCCTCGAACATGCCATATGGGCTAAGAGGAGGATCTGGGATTCCAAACCTGACCCCGAG
 GCTGGAACCCCTCACACAGCAGATCAACAGCTCCTGCACCTCAGCCAGAGACAACCACAGCCTAGCGAG
 GACACACAGAGCCCTGGCCAAGGCTCTCTTCTTGT

ACGCGTACGCGGCCGCTCGAG – GFP Tag – GTTTAA

Protein Sequence:

>MG220718 representing NM_010616
 Red=Cloning site Green=Tags(s)

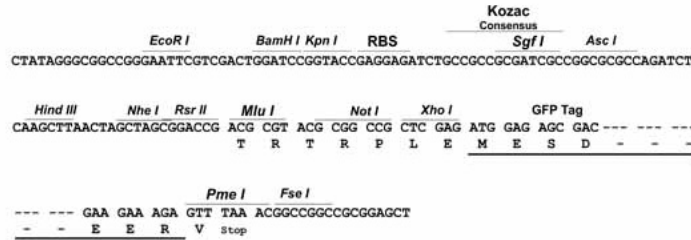
MEERGSPPDGPARNLEQPEGSETPIQVVLVRPMSTVELRRGEQSALHCSGTRTLQVSPDVAFRFGAVL
 DGARTQEDVFRACGVKRLGELALRGFSCTVFTFGQTGSGKTYTLTGPPPQGEVVPVPSLAGIMQRTFTW
 LLDVRVQLDSPVTLRASYLEIYNEQVWDLNLSGSPRPLPVRWTKARGFYVEQLRVVEFGSLEALMELLQM
 GLSRRRSSSHLNLQASSRSHALLTLHISRPTSQQVPPVDLGEPPVGGKLCFVDLAGSEKVAATGSQGQLM
 LEANSINRSLALGHICISLLLDPQRKQNHIPFRDSTLTKLLADSLGGRGVTLMVACVSPSAQCLPETLST
 LRYASRAQRITTRPQGPSPGVKPPQVENELLRLQEENRHLRFQLDQMHTTAPGAHGARMAWAQRNLYG
 MLQEFMLENERLRKEMRQLRSSRDLARAEQRVLAQQVHDLERRLLSACPLPQQGSTPVCPCRMVPAASCH
 ALPPLCYCHHFPLCRVPLAHWTCPRECHMPQVLEPEAPGHISQSVWPPPWAPPSPGSAKPPRRERSQS
 DWTQTRVLAEMLMGEEVVPSPAPLSAGPSNMPYGLRGGSGIPNLTPRLETLTQQINSSLHLSQRQPQPS
 DTQSPGQLSSC

TRTRPLE – GFP Tag – V

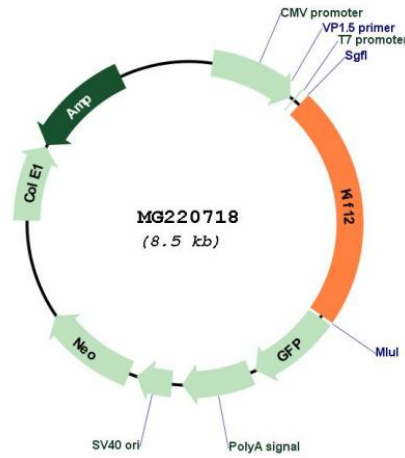
Restriction Sites: SgfI-MluI

Cloning Scheme:

Cloning sites used for ORF Shutting:



Plasmid Map:



ACCN: NM_010616

ORF Size: 1926 bp

OTI Disclaimer:	The molecular sequence of this clone aligns with the gene accession number as a point of reference only. However, individual transcript sequences of the same gene can differ through naturally occurring variations (e.g. polymorphisms), each with its own valid existence. This clone is substantially in agreement with the reference, but a complete review of all prevailing variants is recommended prior to use. More info
OTI Annotation:	This clone was engineered to express the complete ORF with an expression tag. Expression varies depending on the nature of the gene.
Components:	The ORF clone is ion-exchange column purified and shipped in a 2D barcoded Matrix tube containing 10ug of transfection-ready, dried plasmid DNA (reconstitute with 100 ul of water).
Reconstitution Method:	<ol style="list-style-type: none">1. Centrifuge at 5,000xg for 5min.2. Carefully open the tube and add 100ul of sterile water to dissolve the DNA.3. Close the tube and incubate for 10 minutes at room temperature.4. Briefly vortex the tube and then do a quick spin (less than 5000xg) to concentrate the liquid at the bottom.5. Store the suspended plasmid at -20°C. The DNA is stable for at least one year from date of shipping when stored at -20°C.
RefSeq:	NM_010616.3 , NP_034746.1
RefSeq Size:	2250 bp
RefSeq ORF:	1929 bp
Locus ID:	16552
UniProt ID:	Q9D2Z8
Cytogenetics:	4 B3