

Product datasheet for **MG220708**

Cdk11b (NM_007661) Mouse Tagged ORF Clone

Product data:

Product Type:	Expression Plasmids
Product Name:	Cdk11b (NM_007661) Mouse Tagged ORF Clone
Tag:	TurboGFP
Symbol:	Cdk11b
Synonyms:	AA989746; Cdc2l1; Cdc2l2; Cdc11b; Cdk11; CDK11-p46; CDK11-p58; CDK11-p110; p58
Mammalian Cell Selection:	Neomycin
Vector:	pCMV6-AC-GFP (PS100010)
E. coli Selection:	Ampicillin (100 ug/mL)



[View online »](#)

ORF Nucleotide Sequence:

>MG220708 representing NM_007661
 Red=Cloning site Blue=ORF Green=Tags(s)

TTTTGTAATACGACTCACTATAGGGCGGCCGGGAATTCGTCGACTGGATCCGGTACCGAGGAGATCTGCC
 GCC**CGCATCGCC**

ATGGGTGATGAAAAGACTCTTGAAAAGTAAAACGTTAGATGAAATTCCTCAGGAAAAGAAACGAAGGA
 AAGAACAAGAGGAGAAAAGCAGAGATAAACGCTTAAAAAATTCTGATGACCGCGATTCCAAAAGGGATTC
 CCTTGAGGAGGGGAGCTGAGAGATCACCGAATGGAGATCACAATCAGGAACTCACCATATAGAAGAGAG
 GATTCTATGGAAGACAGAGGAGAGGAGGATGATTCTCTGGCCATCAAACACCCAGCAAATGTCTCGGA
 AAGAAAAGGCTCATCACAGAAAAGACGAGAAAAGAAAAGAAAACGTCGACATCGTAGCCATTCAGCAGA
 GGGAGGAAAACATGCCAGAGTAAAAGAGAAAAGAAAAGGAGCACGAACGCCGAAAACGCCACCGAGAAGAA
 CAAGATAAAGCTCGAAGGAGTGGGAAAAGACAGAAGAGGAGGAAATGGCGAGAGAACATTCAGAAGAG
 AGAGGGACCGCTGGAGCAGTTAGAAAAGGAAGAGGGAGCGGGAGCGCAAGCTGAGGGAGCAGCAGAAGGA
 GCAGCGGAGCAGAAGGAGCGGGAACGGAGGGCAGAGGAGCGCCGAAAGAGAGAGAAGCGCGTAGGGAA
 GTCTCTGCACATCACCGTACCATGAGGGAGGAGTACAGTGATAAGGGGAAGGTTGGCCACTGGAGCCGCA
 GCCCTCTGAGGCCACCAAGAGAGCGCTTTGAGATGGGAGACAACCGGAAGCCAGTAAAAGAAGAGAGAGGT
 GGAAGAGAGAGACTTGTGTGACACCTCCAAGACATCAGTGACAGCGAGAGGAAAACAGCTCAGCTGAG
 TCTTCATCAGCAGAATCAGGCTCAGGTTCTGAAGAGGAGGAGGAGGAAGAAGAAGAGGGAAGAAGAAGAA
 AAGGGAGCACCAGTGAAGAATCAGAGGAAGAAGAGGAAGAAGAAGAGGAGGAGGAAGAAGAGGAGACTGG
 GAGCAACTCTGAGGAGCCCTCTGAACAGTCCGCAGAAGAAGTCAAGTATGAGGAAATGAGTGAAGATGAA
 GACAGAGAAAACGAGAACCACATCTTGGTTGTTCCAGAGTCAAGATTTGACCGAGATTCTGGGGACAGTG
 AAGAAGGGGAGGAAGAAGTTGGTGAAGGGACTCCACAGAGCAAGTCCCAACCGGAGGAGACTATGTTCC
 TGAAGTCTCCAGCACTGTACCTATTGAGCTAAAACAAGAAGTCCCAAAATACCTGCCAGCCCTGCAGGGGA
 TGCAGGAGTGTAGAGGAGTTTCAGTGTCTGAACAGGATTGAAGAAGGCACCTATGGGGTGGTCTACAGAG
 CAAAGGACAAGAAAACAGATGAAATTTGGGCTCTGAAGCGGTTAAAGATGGAGAAGGAGAAGGAAGGCTT
 CCCAATCACGTCGCTGAGGGAAATCAACACCATCCTCAAGGCCAGCACCCCAACATCGTACCCTCAGG
 GAAATTTGTGGGAAGTAAATGGACAAGATCTACATTTGTGATGAACTACGTGGAACATGACCTCAAGA
 GCCTAATGGAGACCATGAAGCAGCCCTTCTGCCAGGGGAGGTGAAGACCCTGATGATTCAGCTGCTGAG
 TGGGGTAAAGCACCTCCATGACAATTGGATCCTACACCGTACCTGAAGACCTCTAACCTCCTGCTGAGC
 CATGCTGGCATTCTCAAGGTGGGCGACTTTGGGCTGGCTCGGGAGTATGGTTACCCCTAAAGGCCTACA
 CTCCAGTTGTTGTAACCTGTGGTATCGTGCCCAAGAAGTACTGCTTGGTCTAAGGAATACTCCACAGC
 TGTGGACATGTGGTCCGTAGGCTGCATATTTGGAGAAGTCTGACACAGAAACCTCTGTTCCCTGGGAAG
 TCAGATATTGATCAGATTAACAAGATTTCAAGGACCTGGGTAAGTCTAGTGAGAAAATCTGGCCTGGCT
 ATAATGACCTCCCAGCCGTCAAGAAGATGACCTTCAGCGAGTATCCCTATAACAACCTCCGCAAGAGATT
 TGGGGCTTTGTTATCAGATCAAGGCTTTGATCTCATGAACAAGTCTCTGACATACTACCCTGGCAGGAGG
 ATCAACGCAGAAGATGGCCTCAAGCAGCAATATTTCCGAGAGACTCCCTCCCATCGACCCATCCATGT
 TCCCCACGTGGCTGCCAAGAGTGAAGCAGCAGAGAGTGAAGCGAGGCACGAGTCCACGGCCTCCTGAGGG
 CGGCCTGGGCTACAGCCAGCTGGGTGATGATGACCTGAAGGAGACGGGCTTCCACCTCACCACCACCAAC
 CAGGGAGCCTCAGCTGCAGGCCCTGGCTCAGCCTCAAGTTC

ACGCGTACGCGGCCGCTCGAG - GFP Tag - GTTTAA

Protein Sequence: >MG220708 representing NM_007661
 Red=Cloning site Green=Tags(s)

```

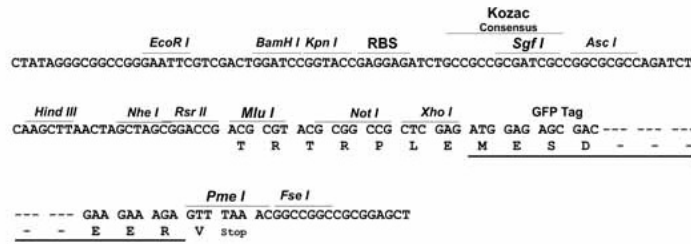
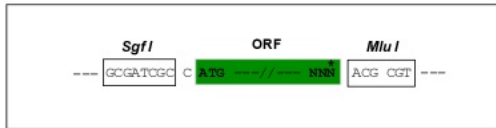
MGDEKDSWKVKTLDLDEILQEKKRRKEQEEKAEIKRLKNSDDDRSKRDSLEEGELDRHRMEITIRNSPYRRE
DSMEDRGEEDSLAIKPPQMSRKEKAHHRKDEKRKEKRRHRSHSAEGGKHARVKEKEREHERRKRHREE
QDKARREWERQKRREMARHRSRRERDRLEQLERKRERERKLREQQKEQREQKERERRAEERRKEREARRE
VSAHHRMTREEYSKGGKVGHWRSRPLRPPRRERFEMGDNRPVKEEKVEERDLLSDLQDISSERKTSSAE
SSSAESGSGSEEEEEEEEEEGSTSEESEEEEEEEEEEEEEETGSNSEEASEQSAEEVSDEEMSEDE
DRENENHILVVPESRFRDRSGDSEEGEEVGEVGPQSSAPTEGDYVPDSPALSPIELKQELPKYLPALQG
CRSVEEFQCLNRIIEEGTYGVVYRAKDKKTDEIVALKRLKMEKEKEGFPITSLREINTILKAQHPNIVTVR
EIVVGSNMDKIYIVMNYVEHDLKSLMETMKQPFPLPGEVKTLMIQLLSGVKHLHDNWLHRDLKTSNLLLS
HAGILKVGDFGLAREYGSPLKAYTPVVVTLWYRAPELLLGAKEYSTAVDMWSVGCIFGELLTQKPLFP GK
SDIDQINKIFKDLGTPSEKIWPGYNDLPAVKKMTFSEYPYNNLRKRF GALLSDQGFDMNKFLTYYPGRR
INAEDGLKHEYFRETPLPIDPSMFPTWPAKSEQQRVKGRTSPRPPEGGLGYSQLGDDDLKETGFHLTTTN
QGASAAGPGFSLKF
  
```

TRTRPLE - GFP Tag - V

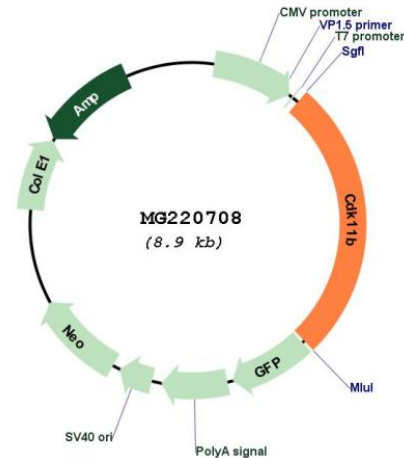
Restriction Sites: SgfI-MluI

Cloning Scheme:

Cloning sites used for ORF Shuttling:



Plasmid Map:



ACCN: NM_007661

ORF Size: 2352 bp

OTI Disclaimer: Due to the inherent nature of this plasmid, standard methods to replicate additional amounts of DNA in *E. coli* are highly likely to result in mutations and/or rearrangements. Therefore, OriGene does not guarantee the capability to replicate this plasmid DNA. Additional amounts of DNA can be purchased from OriGene with batch-specific, full-sequence verification at a reduced cost. Please contact our customer care team at custsupport@origene.com or by calling 301.340.3188 option 3 for pricing and delivery.

The molecular sequence of this clone aligns with the gene accession number as a point of reference only. However, individual transcript sequences of the same gene can differ through naturally occurring variations (e.g. polymorphisms), each with its own valid existence. This clone is substantially in agreement with the reference, but a complete review of all prevailing variants is recommended prior to use. [More info](#)

OTI Annotation: This clone was engineered to express the complete ORF with an expression tag. Expression varies depending on the nature of the gene.

Components: The ORF clone is ion-exchange column purified and shipped in a 2D barcoded Matrix tube containing 10ug of transfection-ready, dried plasmid DNA (reconstitute with 100 ul of water).

Reconstitution Method:

1. Centrifuge at 5,000xg for 5min.
2. Carefully open the tube and add 100ul of sterile water to dissolve the DNA.
3. Close the tube and incubate for 10 minutes at room temperature.
4. Briefly vortex the tube and then do a quick spin (less than 5000xg) to concentrate the liquid at the bottom.
5. Store the suspended plasmid at -20°C. The DNA is stable for at least one year from date of shipping when stored at -20°C.

RefSeq: [NM_007661.4](#)

RefSeq Size: 2589 bp

RefSeq ORF: 2355 bp

Locus ID: 12537

UniProt ID: [P24788](#)

Cytogenetics: 4 86.73 cM

Gene Summary: Plays multiple roles in cell cycle progression, cytokinesis and apoptosis. Involved in pre-mRNA splicing in a kinase activity-dependent manner. May act as a negative regulator of normal cell cycle progression.[UniProtKB/Swiss-Prot Function]