

Product datasheet for **MG220702**

Wdpcp (NM_145425) Mouse Tagged ORF Clone

Product data:

Product Type:	Expression Plasmids
Product Name:	Wdpcp (NM_145425) Mouse Tagged ORF Clone
Tag:	TurboGFP
Symbol:	Wdpcp
Synonyms:	AV249152
Mammalian Cell Selection:	Neomycin
Vector:	pCMV6-AC-GFP (PS100010)
E. coli Selection:	Ampicillin (100 ug/mL)



[View online »](#)

ORF Nucleotide
Sequence:

>MG220702 representing NM_145425
Red=Cloning site Blue=ORF Green=Tags(s)

TTTTGTAATACGACTCACTATAGGGCGGCCGGGAATTCGTCGACTGGATCCGGTACCGAGGAGATCTGCC
GCCGCGATCGCC

ATGCTCTTCTGCTTGACTGAACTACACCTGTGGTCTCTGAAAAGCACCTTACACATTGCGGATAGAGACA
TCGGCGTCTACCAGTACTATGACAAGAAAGATCCATCAGTATCAGCAACAGAGCATGGTAACTTAGAAGA
AAAACAAAGGCTGGCAGAATCACGAGATTATCCTTGGACACTCAAAAATAGACGCCAGAAAACTTCGA
GATTCAGTGAAGGAGTTGGAGGAACTGATGCAAAGCAGTCCGTGTGTGCTGAGCAAATGGAAGAGCAAAT
ACATCTGCCAGCTCCTGTTTGGTTCAGGTGTGCTGGTGTCCCTAAGTCTTCTGGGCCTCAGCTGGAGAA
AGTGGTGATTGACAGAAGCCTGGTGGGGAAGCTCATCTCAGACACCATCAGTGTGCTCTCCTTACAGAC
AGTTTCATCATCTTATCATTTCTGGCACAAAACAACTATGTTTTATTAGTTTACAAAGAAAATGGATT
CTCTTGATGGAACAAGAGGCTGGAGAACTCTCAGCCTTGGACCTTAAGATTTCTATTATGACATACC
TGGCCCAGCCAACAGGACAATAGATCGTCACTTAGCTGTCAACTCCACTCAGGATCTAGTTGTTTGTGG
TGCCCGCTGGTCAGTGATGATGTTTGGCCTTGGACTCCAGTTTCTTCTGAGAAGGACAGAGCCAATATGC
TGGTGTGGGCTTACTCAAGGAGGATTGGAGGTTCTAAGTTTTGTTTCGACAGAATGGAGTCCCCTGGA
TGTTCACTTCGGCACAAACAACCTTATCAGGTGTTTACAGTGGAGTGTCCGTCACTGTAGACAAGGAG
CCCATGGCTGACAGCTGATTTTGAATCTGTCCGGAACAACTCCACTGCGTGTGAGTACCAGAATAC
CACTAAGATCGAAGGCCATCAGCTGTGCGAGAACTCTACGGAAGACAACTGATCGTGGGCTGTGAAGA
CTCTTCAGTAATCTCTATGAAGCTCACCGTGGTGTGACTCTCCTGGCCCAGGCTGAACTTAGGCCTTCA
TTGATAAGCTGCCACCAAGTGGCGCCATTCTTCTGGTGGCAGCAACCAAGGGGAGCTACAATTTTTG
ATATTGCTCTGTCCCCTATCAACATCCAGCTCTTGGCAGAAGATTACTCACCGAAGGAGACTCTGCAATT
CAAGAAGTTCTTTGATGTTTCAAGCAGTCTTGTCAAATGCAGTGGATGGCTCCTCCTGTTGTTTTCCAG
AAGCCTAAAAGAGGAGAAATCTGTGATCTTCTTCTCAGTTCACAAAGGACCTTTGGGTGTGCTAC
TGTTTAAACTTGGCATCCTCACACGAGGACAACCTGGGCCTGGTAGACCTCATCTTACAGTACATTACTA
CAGTGAGGTATATGAGGCCATCAGCATCCTGCGCAGCATGGACTGGGACACCCTGGGCCAGCAGTGTG
ATCGGCATGGGCACCATCGTGAACCATCTTCTTAGACAGAGGCTCACACCAGAGAGAGAAGCACAGCTTG
AGGCGAGCCTTGGAACTTCTATGCTCCAACAAGACCCTTCTGGATACTAATTTTTGGAATATAGAGA
GCCAGTCAGCAAGTATGCCAGGAGGCTCTCCACCACCTGCTCAGGTACAAGAGATTTGAAAAGGCCTTT
CTTCTAGCTGTTGACATTGGAGCTCGTGACCTGTTTATGACATTTCATTACCTTGTCTAGATATGGGTG
AACTGGCACTGGCTGAAGTGGCAAGAAGAAGGGCGCATGATATTGATGTTGAGTCACTATCCTCTGGAGT
CGAGCTCCTGGGCCCCTGGACAGAAGAGACATGCTGAATGAAGTTTTGCCAGCTCAGCTCTATGCCT
GAAGGAGAAAAAAGTTTCCAGGCCTTCTTCTCCATTGGTTCAACACACATGCAAACCTTCAACAGA
AAATACCAATGGCCCTTCAAGCAGATGGGCAATTGAGAGAAGGACTGAGGAAGAAGAGGAGGAGGAGGA
GGAGGAAGAGGAGGAGTTATGCACTGACTCTTCCAGGGCCACCACCTGGAATGCAGAAGGAGAACTGAAA
GAAGACCAAGGAAACAGGACATTGGAGATGTTGGTCTCTCAGAATGGTTCACCTTGGTTTGGT

ACGCGTACGCGGCCGCTCGAG - GFP Tag - GTTTAA

Protein Sequence: >MG220702 representing NM_145425
 Red=Cloning site Green=Tags(s)

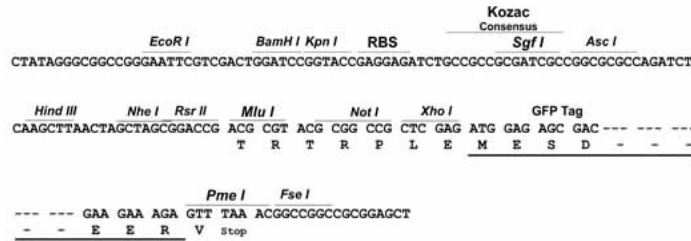
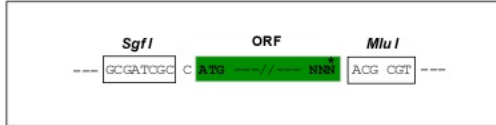
MSFCLTELHLWSLKSTLHIADRIDGVYQYYDKKDPSSVATEHGNLEEKQRLAESRDYPWTLKNRRPEKLR
 DSLKELEELMQSSPCVL SKWWSKYICQLLFGSGVLVLSLSGPGLEKVVIDRSLVGKLI SDTISDALLTD
 SFIIISFLAQNKLCFIQFTKKMDSL DGNKRLEKLSALDLKISYYDIPGPANRTIDRHLAVNSTQDLVVCW
 WPLVSDDVWPWTPVSSEKDRANMLLLGFTQGGLEVL SFVRTEWSPLDVHFGTKQPYQVFTVECSVSDKE
 PMADSC IYESVRNKLHCVSVTRIPLRSKAISCCR NSTEDKLIVGCE DSSVILYEAHRGVTL LAQAELRPS
 LISCHPSGAILLVGSNQGELQIFDIALSPINIQLLAEDYSPKETLQFKKFFDVSSSLVQM QWMA PPVVFQ
 KPKRGEICDLLLRFNKGPLGVLLFKLGILTRGQLGLVDLILQYIHYSEVYE AISILRSM DWDTLGQQCL
 IGMGTIVNHLLRQRLTPEREAQLEASLGT FYAPTRPLD TTTILEYREPVSKYARRLFHLLRYKRFEKAF
 LLAVDIGARDLFMDIHYLALDMGELALAEVARRRAHDIDVESVSSGV ELLGPLDRR DMLNEGFASSALMP
 EGENKFPGLLPSIGSTHMQLQKIPNGPSSRWAIERRTEEEEEEEEEEEELCTDSSGATTWNAEGELK
 EDQRKQDIGDVGSLRMVHFGLV

TRTRPLE - GFP Tag - V

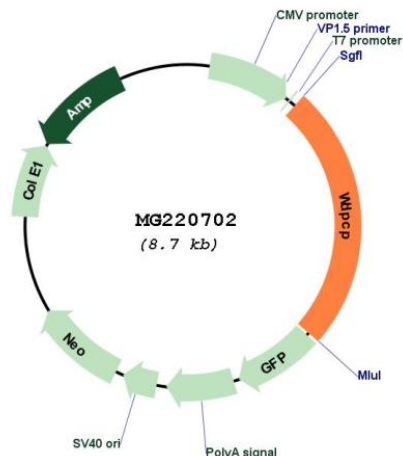
Restriction Sites: SgfI-MluI

Cloning Scheme:

Cloning sites used for ORF Shutting:



Plasmid Map:



ACCN: NM_145425

ORF Size: 2166 bp

OTI Disclaimer: The molecular sequence of this clone aligns with the gene accession number as a point of reference only. However, individual transcript sequences of the same gene can differ through naturally occurring variations (e.g. polymorphisms), each with its own valid existence. This clone is substantially in agreement with the reference, but a complete review of all prevailing variants is recommended prior to use. [More info](#)

OTI Annotation: This clone was engineered to express the complete ORF with an expression tag. Expression varies depending on the nature of the gene.

Components: The ORF clone is ion-exchange column purified and shipped in a 2D barcoded Matrix tube containing 10ug of transfection-ready, dried plasmid DNA (reconstitute with 100 ul of water).

Reconstitution Method:

1. Centrifuge at 5,000xg for 5min.
2. Carefully open the tube and add 100ul of sterile water to dissolve the DNA.
3. Close the tube and incubate for 10 minutes at room temperature.
4. Briefly vortex the tube and then do a quick spin (less than 5000xg) to concentrate the liquid at the bottom.
5. Store the suspended plasmid at -20°C. The DNA is stable for at least one year from date of shipping when stored at -20°C.

RefSeq: [NM_145425.3](#), [NP_663400.2](#)

RefSeq Size: 2443 bp

RefSeq ORF: 2169 bp

Locus ID: 216560

UniProt ID: [Q8C456](#)

Cytogenetics: 11 13.9 cM

Gene Summary: Probable effector of the planar cell polarity signaling pathway which regulates the septin cytoskeleton in both ciliogenesis and collective cell movements. Together with FUZ and WDPCP proposed to function as core component of the CPLANE (ciliogenesis and planar polarity effectors) complex involved in the recruitment of peripheral IFT-A proteins to basal bodies (PubMed:27158779).[UniProtKB/Swiss-Prot Function]