

## Product datasheet for **MG220695**

### Celf4 (NM\_001146294) Mouse Tagged ORF Clone

#### Product data:

Product Type:	Expression Plasmids
Product Name:	Celf4 (NM_001146294) Mouse Tagged ORF Clone
Tag:	TurboGFP
Symbol:	Celf4
Synonyms:	A230070D14Rik; Brul4; BRUNOL-4; Brunol4; C130060B05Rik
Mammalian Cell Selection:	Neomycin
Vector:	pCMV6-AC-GFP (PS100010)
E. coli Selection:	Ampicillin (100 ug/mL)



[View online »](#)

**ORF Nucleotide Sequence:**

>MG220695 representing NM\_001146294  
 Red=Cloning site Blue=ORF Green=Tags(s)

TTTTGTAATACGACTCACTATAGGGCGGCCGGGAATTCGTCGACTGGATCCGGTACCGAGGAGATCTGCC  
 GCC**CGGATCGCC**

ATGTATATAAAGATGGCCACGTTAGCAAACGGACAGGCTGACAACGCGAGCCTCAGTACCAACGGGCTAG  
 GCAGCAGCCCGGGCAGCGCCGGGCATATGAACGGATTAAGCCACAGCCCGGGGAACCCGTCGACCATTCC  
 CATGAAGGACCACGATGCCATCAAGCTGTTTCATTGGGCAGATCCCCGAAACCTGGATGAGAAGGACCTC  
 AAGCCCCTCTTCGAGGAGTTCGGCAAGATCTACGAGCTTACGGTTCTGAAGGACAGGTTACAGGCATGC  
 ACAAAGGCTGCGCTTTCCTCACCTACTGCGAGCGTGAGTCAGCGCTGAAGGCCAGAGCGCGCTGCACGA  
 GCAGAAGACCCTGCCGGGATGAACCGGCCGATCCAGGTGAAGCCTGCGGACAGCGAGAGCCGAGGAGAT  
 AGAAAACCTCTTCGTGGGTATGCTCAACAAGCAACAATCTGAGGACGACGTGCGCCGCTCTTCGAGGCC  
 TCGGGAACATCGAGGAGTGCATATCCTGCGCGGGCCGGACGGCAACAGCAAGGGGTGCGCCTTTGTGAA  
 GTACTCCTCCCATGCCGAGGCACAAGCCGCCATCAACGCTCTACATGGCAGCCAGACCATGCCTGGAGCC  
 TCCTCCAGCCTGGTGGTCAAGTTTGAGACACTGACAAGGAGCGACAATGCGACGGATGCAGCAGATGG  
 CTGGCCAGATGGGCATGTTCAACCCCATGGCCATCCCCTTCGGAGCCTATGGCGCCTATGCTCAGGCACT  
 GATGCAGCAGCAAGCAGCCCTCATGGCATCGGTGCGCAAGGAGGCTACCTGAATCCCATGGCTGCCTTC  
 GCTGCCGCCAAATGCAGCAGATGGCGGCCCTCAACATGAATGGCTGGCAGCCGCACCTATGACCCCAA  
 CCTCAGGTGGCAGCACCCCTCCAGGCATCACTGCACCAGCTGTGCTAGCATCCCATCCCCATTGGGGT  
 GAACGGCTTACGGGCCCTCCCCCTCAGGCCAATGGGCAGCCTGCTGCGGAAGCTGTGTTTGCCAAATGGC  
 ATTCACCCCTACCCAGCACAGAGCCCCACCGCAGCCGACCCCTGCAGCAGGCCTACGCTGGAGTGCAGC  
 AGTATGCAGGACCAGCTGCCTACCCTGCTGCCTATGGTCAGATTAGCCAGGCCTTTCCTCAGCCACCGCC  
 AATGATTCCCCAGCAACAGAGAGAAGGGCCGAGGGCTGTAACCTGCTCATCTACCATCTGCCCCAGGAG  
 TTTGGGACGCTGAGCTGATGCAGATGTTCTCCCTTTCGGTAATGTCATCTCCTCGAAAGTGTGTTGTGG  
 ATCGGGGACTAACCAAAGTAAATGCTTTGGCTTCGTGAGCTTCGACAACCCGGCCAGCGCACAGACCGC  
 CATCCAGGCCATGAACGGCTTCCAGATAGGCATGAAGAGGCTCAAGGTGCAGCTGAAGCGGCCAAAGAC  
 GCCAATCGCCGTAC

**ACGCGTACGCGGCCGCTCGAG** - GFP Tag - GTTTAA

**Protein Sequence:**

>MG220695 representing NM\_001146294  
 Red=Cloning site Green=Tags(s)

MYIKMATLANGQADNASLSTNGLGSSSPGSAGHMNGLSHSPGNPSTIPMKDHDAIKLFIGQIPRNLDEKDL  
 KPLFEFEGKIYELTVLKDRFTGMHKGCAFLTYCERESALKAQSALHEQKTLPGMNRPIQVKPADSESRGD  
 RKL FVGM LNKQSEDDVRRLLFEAFGNIEECTILRPGDGNSKGCFAFKYSSHAEQAALINALHGSQTMPGA  
 SSSLVVKFADTDKERTMRRMQMAGQMGMFNPMIIPFGAYGAYAALMQQAALMASVAQGGYLNPMAAF  
 AAAQMQQMAALNMNGLAAMPMTPTSGGSTPPGITAPAVPSIPSPIGVNGFTGLPPQANGQPAAEAVFANG  
 IHPYPAQSPTAADPLQQAYAGVQYAGPAAYPAAYGQISQAFPQPPMIPQQREGPEGCNLLIYHLPQE  
 FGDAELMQMFLPFGNVSISSKVFVDRATNQSCKFGVFSFDNPASAQTAIQAMNGFQIGMKRLKVLKRPKD  
 ANRPY

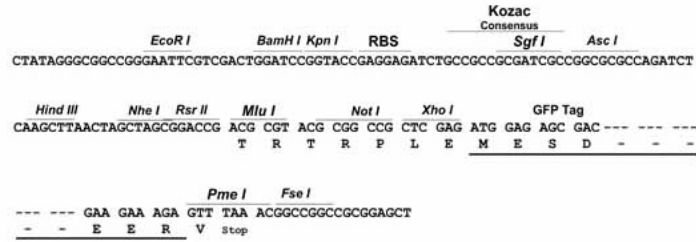
**TRTRPLE** - GFP Tag - V

**Restriction Sites:**

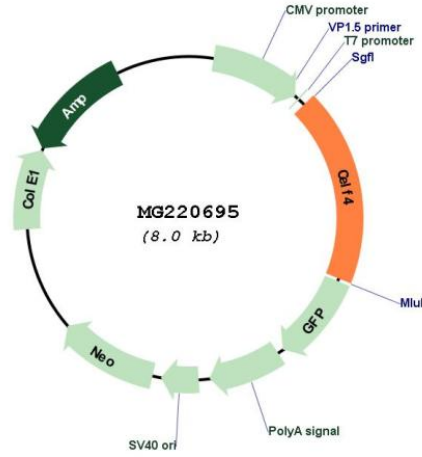
Sgfl-Mlul

Cloning Scheme:

Cloning sites used for ORF Shutting:



Plasmid Map:



ACCN: NM\_001146294

ORF Size: 1485 bp

<b>OTI Disclaimer:</b>	<p>Due to the inherent nature of this plasmid, standard methods to replicate additional amounts of DNA in E. coli are highly likely to result in mutations and/or rearrangements. Therefore, OriGene does not guarantee the capability to replicate this plasmid DNA. Additional amounts of DNA can be purchased from OriGene with batch-specific, full-sequence verification at a reduced cost. Please contact our customer care team at <a href="mailto:custsupport@origene.com">custsupport@origene.com</a> or by calling 301.340.3188 option 3 for pricing and delivery.</p> <p>The molecular sequence of this clone aligns with the gene accession number as a point of reference only. However, individual transcript sequences of the same gene can differ through naturally occurring variations (e.g. polymorphisms), each with its own valid existence. This clone is substantially in agreement with the reference, but a complete review of all prevailing variants is recommended prior to use. <a href="#">More info</a></p>
<b>OTI Annotation:</b>	<p>This clone was engineered to express the complete ORF with an expression tag. Expression varies depending on the nature of the gene.</p>
<b>Components:</b>	<p>The ORF clone is ion-exchange column purified and shipped in a 2D barcoded Matrix tube containing 10ug of transfection-ready, dried plasmid DNA (reconstitute with 100 ul of water).</p>
<b>Reconstitution Method:</b>	<ol style="list-style-type: none"><li>1. Centrifuge at 5,000xg for 5min.</li><li>2. Carefully open the tube and add 100ul of sterile water to dissolve the DNA.</li><li>3. Close the tube and incubate for 10 minutes at room temperature.</li><li>4. Briefly vortex the tube and then do a quick spin (less than 5000xg) to concentrate the liquid at the bottom.</li><li>5. Store the suspended plasmid at -20°C. The DNA is stable for at least one year from date of shipping when stored at -20°C.</li></ol>
<b>RefSeq:</b>	<a href="#">NM_001146294.2</a>
<b>RefSeq Size:</b>	3980 bp
<b>RefSeq ORF:</b>	1488 bp
<b>Locus ID:</b>	108013
<b>UniProt ID:</b>	<a href="#">Q7TSY6</a>
<b>Cytogenetics:</b>	18 A2
<b>Gene Summary:</b>	<p>RNA-binding protein implicated in the regulation of pre-mRNA alternative splicing. Mediates exon inclusion and/or exclusion in pre-mRNA that are subject to tissue-specific and developmentally regulated alternative splicing. Specifically activates exon 5 inclusion of cardiac isoforms of TNNT2 during heart remodeling at the juvenile to adult transition. Promotes exclusion of both the smooth muscle (SM) and non-muscle (NM) exons in actinin pre-mRNAs. Activates the splicing of MAPT/Tau exon 10. Binds to muscle-specific splicing enhancer (MSE) intronic sites flanking the alternative exon 5 of TNNT2 pre-mRNA (By similarity).[UniProtKB/Swiss-Prot Function]</p>