

## Product datasheet for **MG220640**

### **Dram1 (NM\_027878) Mouse Tagged ORF Clone**

#### Product data:

**Product Type:** Expression Plasmids  
**Product Name:** Dram1 (NM\_027878) Mouse Tagged ORF Clone  
**Tag:** TurboGFP  
**Symbol:** Dram1  
**Synonyms:** 1200002N14Rik; Dram  
**Mammalian Cell Selection:** Neomycin  
**Vector:** pCMV6-AC-GFP (PS100010)  
**E. coli Selection:** Ampicillin (100 ug/mL)  
**ORF Nucleotide Sequence:** >MG220640 representing NM\_027878  
**Red=Cloning site Blue=ORF Green=Tags(s)**

TTTTGTAATACGACTCACTATAGGGCGGCCGGAATTCGTCGACTGGATCCGGTACCGAGGAGATCTGCC  
GCC**CGATCGCC**

ATGCTGTGCTTCCTCAGGGGAATGGCTTTCGTCCCCTTCCTCCTGGTGACTTGGTCGTCCGCAGCCTTCA  
TCATCTCCTACGTGGTCGCGGTGCTCTCTGGGCACGTCAACCCCTTCTCCCCTATATCAGTGACACAGG  
AACAACTCCTCCAGAGAGTGGTATTTTTGGATTCATGATAAACTTCTCTGCATTTCTGGCGCAGCTACG  
ATGTACACAAGATACAAGATAGTGGAGAAGCAGAATGAGACCTGCTACTTCAGCACTCCCGTTTTAACT  
TGGTGTCTTGGCGCTTGGATTGGTGGGATGCATCGGAATGGGCATCGTAGCCAACCTCCAGGAGTTAGC  
CGTGCCTGTGGTCCATGATGGCGGTGCGCTTCTGGCTTTCGTCTGCGGGGTGGTGTACACGCTCCTGCAA  
TCGATCATCTCCTACAAATCCTGTCCCCAGTGGAAACAGTCTCACCACGTGCCATGTCAGGATGGCCATCT  
CCGCTGTTTCGTGCGCAGCTGTCGTCCCATGATTGCCTGTGCTTCACTCATTTCTATAACCAAGCTGGA  
ATGGAATCCAAAAGAAAAGGATTATATATACAGTGGTGAGCGCCATCTGTGAGTGGACCGTGGCTTTT  
GGTTTTATTTCTATTTCTAACATTCAAGATTTCCAGAGTGTCACTCTAAGGATATCCACAGAAA  
TCAATGACGACTTT

**ACGCGTACGCGGCCGCTCGAG** - GFP Tag - GTTTAA



[View online »](#)

**Protein Sequence:** >MG220640 representing NM\_027878  
Red=Cloning site Green=Tags(s)

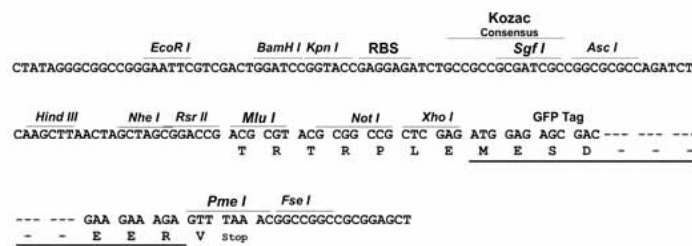
MLCFLRGMFVFPFLLVTWSSAAFIIISYVVAVLSGHVNPFLPYISDTGTTPEESGIFGFMINFS AFLGAAT  
 MYTRYKIVEKQNETCYFSTPVFNLVSLALGLVGCIGMGIVANFQELAVPVVHDGGALLAFVCGVVYTL LQ  
 SII SYKSCPQWNSLT TCHVRMAISAVSCAAVVPMIACASLISITKLEWNPKEKDYIYHVVS AICEWTVAF  
 GFIFYFLTFIQDFQSVTLRISTEINDDF

TRTRPLE - GFP Tag - V

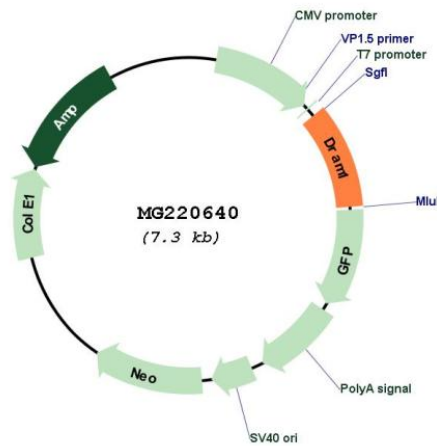
**Restriction Sites:** SgfI-MluI

**Cloning Scheme:**

Cloning sites used for ORF Shutting:



**Plasmid Map:**



**ACCN:** NM\_027878

**ORF Size:** 714 bp

<b>OTI Disclaimer:</b>	The molecular sequence of this clone aligns with the gene accession number as a point of reference only. However, individual transcript sequences of the same gene can differ through naturally occurring variations (e.g. polymorphisms), each with its own valid existence. This clone is substantially in agreement with the reference, but a complete review of all prevailing variants is recommended prior to use. <a href="#">More info</a>
<b>OTI Annotation:</b>	This clone was engineered to express the complete ORF with an expression tag. Expression varies depending on the nature of the gene.
<b>Components:</b>	The ORF clone is ion-exchange column purified and shipped in a 2D barcoded Matrix tube containing 10ug of transfection-ready, dried plasmid DNA (reconstitute with 100 ul of water).
<b>Reconstitution Method:</b>	<ol style="list-style-type: none"><li>1. Centrifuge at 5,000xg for 5min.</li><li>2. Carefully open the tube and add 100ul of sterile water to dissolve the DNA.</li><li>3. Close the tube and incubate for 10 minutes at room temperature.</li><li>4. Briefly vortex the tube and then do a quick spin (less than 5000xg) to concentrate the liquid at the bottom.</li><li>5. Store the suspended plasmid at -20°C. The DNA is stable for at least one year from date of shipping when stored at -20°C.</li></ol>
<b>RefSeq:</b>	<a href="#">NM_027878.2</a> , <a href="#">NP_082154.2</a>
<b>RefSeq Size:</b>	2807 bp
<b>RefSeq ORF:</b>	717 bp
<b>Locus ID:</b>	71712
<b>UniProt ID:</b>	<a href="#">Q9DC58</a>
<b>Cytogenetics:</b>	10 C1
<b>Gene Summary:</b>	Lysosomal modulator of autophagy that plays a central role in p53/TP53-mediated apoptosis. Not involved in p73/TP73-mediated autophagy (By similarity).[UniProtKB/Swiss-Prot Function]