

Product datasheet for **MG220625**

Gpr83 (NM_010287) Mouse Tagged ORF Clone

Product data:

Product Type: Expression Plasmids
Product Name: Gpr83 (NM_010287) Mouse Tagged ORF Clone
Tag: TurboGFP
Symbol: Gpr83
Synonyms: AW045253; Gir; Gpr72; RP39; RP82; RP105
Mammalian Cell Selection: Neomycin
Vector: pCMV6-AC-GFP (PS100010)
E. coli Selection: Ampicillin (100 ug/mL)
ORF Nucleotide Sequence: >MG220625 representing NM_010287
 Red=Cloning site Blue=ORF Green=Tags(s)

TTTTGTAATACGACTCACTATAGGGCGGCCGGAATTCGTCGACTGGATCCGGTACCGAGGAGATCTGCC
 GCC**CGATCGCC**

ATGAAGGTTCTCCTGTCTCTCTTTCTTCTGTCTCAGTGCAGCTACTGAGCAACCGCAGGTCTG
 TCACTGAGCATCCCAGCATGGAGGCAGCCCTGACCGGGCCCAACGCCTCCTCGCACTTCTGGCCAACTA
 CACTTTCTCTGACTGGCAGAACTTCGTGGGCAGGAGACGTTATGGGGCCGAGTCCCAGAACCCACGGTG
 AAAGCACTGCTCATCGTGGCCTACTCATTACCATCGTCTTCTCGCTCTTCGGTAATGTCCTGGTCTGTC
 ATGTCATCTTCAAGAACCAGCGCATGCACTCGGCCACCAGCCTTTCATTGTCAACCTGGCAGTGGCGGA
 CATCATGATCACATTGCTCAACACGCCCTTCACTTTGGTCCGCTTGTGAACAGCACATGGGTGTTGGG
 AAGGGCATGTGTCATGTCACTCGCTTGTCTCAGTACTGTTCTCTACATGTCTCAGCACTGACTCTGACAG
 CTATCGCAGTGGACCGCCACCAGGTTCATCATGCATCCACTGAAGCCTCGGATCTCCATCACCAAGGGTGT
 CATATATATTGCTGTCATCTGGGTATGGCTACCTTCTTCTCTGCCACATGCCATCTGCCAGAAACTG
 TTTACCTTCAAGTACAGTGAAGACATTGTGCGCTCCCTGCTGCTGCCGGACTTCCCGGAGCCAGCTGACC
 TCTTCTGGAAGTATCTGGACCTGGCCACCTTCATCCTGCTCTACCTACTTCCACTTTCATTATCTCAGT
 GGCCTATGCTCGTGTGGCCAAGAAGCTGTGGCTCTGTAACACCATTGGCGACGTGACCACAGAGCAGTAC
 CTCGCCCTGCGACGCAAGAAGAAGACCACCGTGAAGATGCTGGTCTTGTGGTAGTCTCTTTGCCCTCT
 GCTGGTTCCCTCTCAACTGCTATGTCTCCTCTTGTCCAGCAAGGCCATCCACACCAACAATGCCCTCTA
 CTTTGCCTTCCACTGGTTTGCCATGAGCAGTACTGTTATAACCCCTTCACTACTGCTGGCTCAATGAG
 AACTTTAGGGTTGAGCTTAAGGCATTGCTGAGCATGTGCCAAAGGCCACCAAGCCGAGGAAGACAGGC
 TACCCTCCCCAGTTCCTTCCCTTCCAGGTGGCATGGACAGAGAAGGCCATGGTCGGAGGGCTCCACTACC
 TAATCACCACTTGCCCTTCCAGATCCAGTCTGGGAAGACAGATCTGTCATCTGTGGAACCCGTTGTG
 GCCATGAGT

ACGCGTACGCGGCCGCTCGAG - GFP Tag - GTTTAA



[View online »](#)

Protein Sequence: >MG220625 representing NM_010287
Red=Cloning site Green=Tags(s)

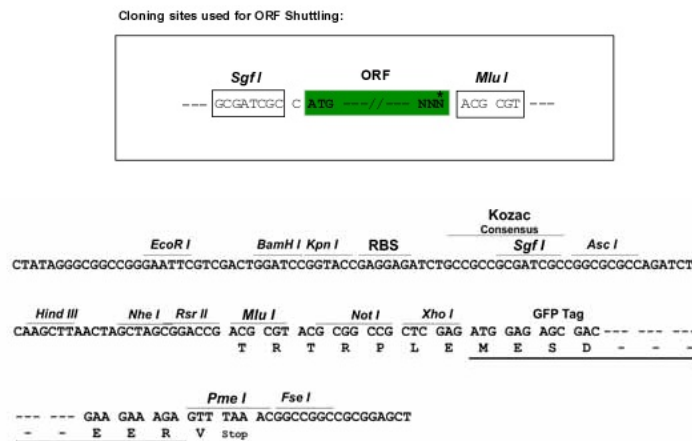
MKVPPVLLLFLSSVRATEQPQVVTEHPSMEAAL TGNASSHFWANYTFSDWQNFVGRRRYGAESQNPTV
 KALLIVAYSFTIVFSLFGNVLVCHVIFKNQRMHSATSLFIVNLAVADIMITLLNTPFTLVRFVNSTWVFG
 KGMCHVSRFAQYCSLHVSALTLTAIAVDRHQVIMHPLKPRISITKGVIIYIAVIWVMTFFSLPHAIQKL
 FTFKYSEDIVRSLCLPDFPEPADLFWKYLDLDTFILLYLLPLFIIISVAYARVAKKLWLCNTIGDVTTEQY
 LALRRKKKTTVKMLVLVVVLFALCWFLNCYVLLSSKAIHTNNALYFAFHWFAMSSTCYNPFIIYCWLNE
 NFRVELKALLSMCQRPPKPQEDRLPSPVPSFRVAWTEKSHGRRAPLPNHHLPSQIQSGKTDLSSVEPVV
 AMS

TRTRPLE - GFP Tag - V

Chromatograms: https://cdn.origene.com/chromatograms/ja3319_a04.zip

Restriction Sites: SgfI-MluI

Cloning Scheme:



ACCN: NM_010287

ORF Size: 1269 bp

OTI Disclaimer: Due to the inherent nature of this plasmid, standard methods to replicate additional amounts of DNA in E. coli are highly likely to result in mutations and/or rearrangements. Therefore, OriGene does not guarantee the capability to replicate this plasmid DNA. Additional amounts of DNA can be purchased from OriGene with batch-specific, full-sequence verification at a reduced cost. Please contact our customer care team at custsupport@origene.com or by calling 301.340.3188 option 3 for pricing and delivery.

The molecular sequence of this clone aligns with the gene accession number as a point of reference only. However, individual transcript sequences of the same gene can differ through naturally occurring variations (e.g. polymorphisms), each with its own valid existence. This clone is substantially in agreement with the reference, but a complete review of all prevailing variants is recommended prior to use. [More info](#)

OTI Annotation: This clone was engineered to express the complete ORF with an expression tag. Expression varies depending on the nature of the gene.

Components: The ORF clone is ion-exchange column purified and shipped in a 2D barcoded Matrix tube containing 10ug of transfection-ready, dried plasmid DNA (reconstitute with 100 ul of water).

Reconstitution Method:

1. Centrifuge at 5,000xg for 5min.
2. Carefully open the tube and add 100ul of sterile water to dissolve the DNA.
3. Close the tube and incubate for 10 minutes at room temperature.
4. Briefly vortex the tube and then do a quick spin (less than 5000xg) to concentrate the liquid at the bottom.
5. Store the suspended plasmid at -20°C. The DNA is stable for at least one year from date of shipping when stored at -20°C.

RefSeq: [NM_010287.3](#)

RefSeq Size: 2252 bp

RefSeq ORF: 1272 bp

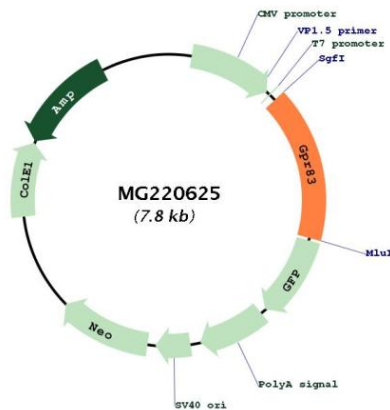
Locus ID: 14608

UniProt ID: [P30731](#)

Cytogenetics: 9 4.4 cM

Gene Summary: Orphan receptor. Could be a neuropeptide Y receptor.[UniProtKB/Swiss-Prot Function]

Product images:



Circular map for MG220625