

Product datasheet for **MG220624**

Pigt (NM_133779) Mouse Tagged ORF Clone

Product data:

Product Type:	Expression Plasmids
Product Name:	Pigt (NM_133779) Mouse Tagged ORF Clone
Tag:	TurboGFP
Symbol:	Pigt
Synonyms:	2510012P17Rik; 4930534E15Rik; CGI-06; NDAP; Ndap7
Mammalian Cell Selection:	Neomycin
Vector:	pCMV6-AC-GFP (PS100010)
E. coli Selection:	Ampicillin (100 ug/mL)



[View online »](#)

ORF Nucleotide Sequence:

>MG220624 representing NM_133779
 Red=Cloning site Blue=ORF Green=Tags(s)

TTTTGTAATACGACTCACTATAGGGCGGCCGGAATTCGTCGACTGGATCCGGTACCGAGGAGATCTGCC
 GCC**CGGATCGCC**

ATGGCGGCTGCCATGCCGCTCGTTTCCGTTGCGGTTACTGGTGTCTGTTGCTGGTGGGACGGGGCTGCT
 GTGGCTGCGCGGAGGGCCACGCGACAGCCTGCGAGAAGAGCTCGTTATCACTCCACTGCCTTCCGGCGA
 CGTGGCCGCCACATTCCAGTTCGCGACGCGTTGGATTCCGGATCTGCAGCGGGAAGGAGTGTCCATTAC
 AGGCTCTTCCCTAAAGCCCTGGGACAGCTGATCTCCAAGTACTCCCTGCGGGAGCTCCACCTGTCGTTCA
 CGCAAGGCTTTTGGAGGACGCGATACTGGGGCCACCCTTCTGCAGGCTCCGTCAGGTGCAGAGCTCTG
 GGTCTGGTTCCAAGACTGTCACCGATGTGGATAAGTCTGGAGGGAGCTCAGCAATGTCCTCTCGGGG
 ATCTTCTGTGCATCCCTCAACTTCATCGACGCCACCAATACCGTCACTCCACCGCCTCCTTCAAACCTC
 TGGGACTGGCCAATGACTGACGACTACTTCTGCGCTACGCTGTGCTGCCTCGGGAGGTTGTCTGCAC
 TGAGAACCTCACGCCATGGAAGAAGCTTGTCCCTGCAGTCCAAGGCCGGTCTCTCAGTGTATTGAAA
 GCAGACCGCTTGTTCACACCAGTTACCACTCCAGGCAGTGCACATCCGGCCTATCTGCAGAAATGCTC
 ACTGTACCAGCATCTCCTGGGAGCTGAGGCAGACCCTTTCGGTTGTCTTTGATGCCTTATCACAGGACA
 GGGGAAGAAAGACTGGTCCCTCTTCCGCATGTTCTCCCGACTCTCACAGAGGCCTGTCCATTGGCGTCT
 CAGAGCCTAGTTTATGTGGACATCACAGGCTACAGCCAGGATAATGAAACTGGAGGTGAGCCCTCCCC
 CAACTTCCACATACCAGGATGTCATTTTGGGCACCAGGAAGACCTATGCCGTCTATGACTTGTGTTGACAC
 AGCCATGATCAATAACTCTCGAAACCTCAACATCCAGCTCAAATGGAAGAGACCCCAAGATAATGAGGCC
 CTACCCGTGCCCTTCTGCATGCGCAGCGGTACGTGAGTGGCTATGGACTGCAGAAGGGAGAGCTGAGTA
 CTCTGTGTACAACCTCCATCCTTATCGGGCCTTCCCCGTGCTGCTGTTGATGTCCCTGGTACCT
 GCGGCTGTATGTGCACACGCTCACCAATTACCTCCAAGGGCAAGGAGAATAAACCAAGTTACATCCACTAC
 CAACCTGCTCAGGACAGGCAGCAGCCCCACCTCCTGGAGATGCTCATTACGCTGCCAGCCAACTCCGTCA
 CCAAGGCTCCATCCAGTTTGAACGAGCCCTGCTCAAGTGGACAGAGTACACACCAGACCCCAACCACGG
 CTTCTATGTCAGCCCATCTGTCTCAGCGCCCTTGTGCCAGTGTGGTGGCAGCCAAACCAGTGGACTGG
 GAAGGGAGCCCTCTTTCAACACCTTGTCCCGGTGTCTGATGGTCCAGCTACTTTGTCGACTCTACA
 CAGAGCCCTTGTAGTGAACCTGCCACCCCGACTTCAGCATGCCCTACAATGTGATCTGCCTTACGTG
 CACGGTGGTGGCCGTGTCTATGGCTCCTTCTACAATCTCCTCACCCGAACCTTTACATCGAAGAGCCC
 AAGTCGGGCGGCCTGGCCAAGCGGCTGGCTAACCTCATCCGCGTGGCCGTGGTGTGCCCTCTC

AG**CGGACCG**ACGCGTACGCGGCCGCTCGAG - GFP Tag - GTTTAA

Protein Sequence:

>MG220624 representing NM_133779
 Red=Cloning site Green=Tags(s)

MAAAMPLGLPLRLLVLLLVGRGCCGAEGPRDSLREELVITPLPSGDVAATFQFRTRWSDSLQREGVSHY
 RLFPKALGQLISKYSLRELHLSFTQGFWRTRYWGPFLQAPSGAELWVWFQDVTVDVDSWRELSNVLSSG
 IFCASLNFIDATNTVPTASFKPLGLANDDDYFLRYAVLPREVVCTENLTPWKLLPCSSKAGLSVLLK
 ADRLFHTSYHSQAVHIRPICRNAHCTSISWELRQTLVVFDFAITGQKKDWSLFRMFSRTLTEACPLAS
 QSLVYVDITGYSQDNETLEVSPPTSTYQDVILGTRKTYAVYDLFDTAMINNSRNLNIQLKWKRPDNEA
 LPVPFLHAQRYVSGYGLQKQELSTLLYNSHPYRAFPVLLLDVVPWYLRVYVHTLITITSGKKNKPSYIHY
 QPAQDRQPHLLEMLIQLPANSVTKVSIQFERALLKWTEYTPDPNHGFYVSPVLSALVPSVVAAPVDW
 EGSPLFNTLFPVSDGSSYFVRLYTEPLL VNLPTPDFSMPYNVICLTCTVVAVCYGSFYNLLTRTFHIEEP
 KSGGLAKRLANLIRRARGVPPL

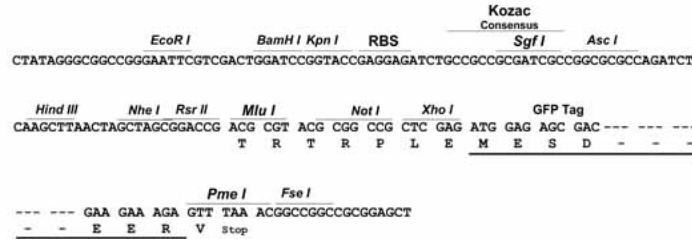
SGP**TRTRRLE** - GFP Tag - V

Restriction Sites:

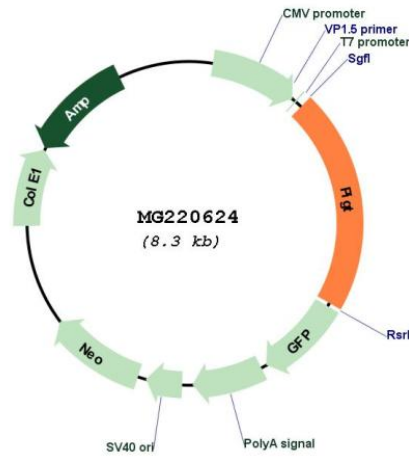
Sgfl-RsrII

Cloning Scheme:

Cloning sites used for ORF Shuttling:



Plasmid Map:



ACCN: NM_133779
 ORF Size: 1746 bp

OTI Disclaimer:	The molecular sequence of this clone aligns with the gene accession number as a point of reference only. However, individual transcript sequences of the same gene can differ through naturally occurring variations (e.g. polymorphisms), each with its own valid existence. This clone is substantially in agreement with the reference, but a complete review of all prevailing variants is recommended prior to use. More info
OTI Annotation:	This clone was engineered to express the complete ORF with an expression tag. Expression varies depending on the nature of the gene.
Components:	The ORF clone is ion-exchange column purified and shipped in a 2D barcoded Matrix tube containing 10ug of transfection-ready, dried plasmid DNA (reconstitute with 100 ul of water).
Reconstitution Method:	<ol style="list-style-type: none">1. Centrifuge at 5,000xg for 5min.2. Carefully open the tube and add 100ul of sterile water to dissolve the DNA.3. Close the tube and incubate for 10 minutes at room temperature.4. Briefly vortex the tube and then do a quick spin (less than 5000xg) to concentrate the liquid at the bottom.5. Store the suspended plasmid at -20°C. The DNA is stable for at least one year from date of shipping when stored at -20°C.
RefSeq:	NM_133779.2 , NP_598540.2
RefSeq Size:	2574 bp
RefSeq ORF:	1749 bp
Locus ID:	78928
UniProt ID:	Q8BXQ2
Cytogenetics:	2 H3
Gene Summary:	Component of the GPI transamidase complex. Essential for transfer of GPI to proteins, particularly for formation of carbonyl intermediates (By similarity).[UniProtKB/Swiss-Prot Function]