

Product datasheet for **MG220601**

Scfd1 (NM_029825) Mouse Tagged ORF Clone

Product data:

Product Type:	Expression Plasmids
Product Name:	Scfd1 (NM_029825) Mouse Tagged ORF Clone
Tag:	TurboGFP
Symbol:	Scfd1
Synonyms:	3110021P21Rik; RA410; STXBP1L2
Mammalian Cell Selection:	Neomycin
Vector:	pCMV6-AC-GFP (PS100010)
E. coli Selection:	Ampicillin (100 ug/mL)



[View online »](#)

ORF Nucleotide Sequence:

>MG220601 representing NM_029825
 Red=Cloning site Blue=ORF Green=Tags(s)

TTTTGTAATACGACTCACTATAGGGCGGCCGGAATTCGTCGACTGGATCCGGTACCGAGGAGATCTGCC
 GCC**CGCATCGCC**

ATGGTGGGAAGCAAGATGGCGGCCACGGCCAGCATTCCGGAGAGGCAAACAGTGGCTCTGAAGCGGATGT
 TGAATTTCAATGTGCCTCATGTTAAAAACAGTACTGGAGAACCAGTATGGAAGGTAATCATTATGACAG
 ATTTGGCCAAGATATCATCTCTCCTCTGCTGTCTGTGAAGGAAGTGAAGACATGGGCATCACTCTGCAT
 CTCCTTTTGCAGTACAGCCGAGATCCGATTCCAGATGTTCTGCAGTGTACTTTGTGATGCCAACCGAAG
 AAAATATTGACAGACTGTGCCAGGATCTTCGAAATCAGCTCTATGAATCCTATTATTTAAATTTTATTTT
 TGCGATTTCAAGAAGTAACTGGAAGACATTGCGAATGCAGCATTGGCCGCTAGTGCAGTACACAAAGT
 GCCAAGGTTTTGACCAGTATCTCAATTTTATTACTTTGGAAGATGACATGTTTGTATTATGTAATCAA
 ATAAGGAAGTGTTCATATCGTGCCATTAACAGGCCAGACATCAGACACAGAGATGGAACTGTTAT
 GGACACTATTGTGGACAGCCTCTCTGCTTTTTGTTACATTAGGTGCTGTTCCCATCATCCGATGCTCA
 AGAGGAACGGCGGCAGAAATGGTGGCAGTGAACTAGATAAAAACTTCGGGAAAATCTAAGAGATGCAA
 GAAACAGCCTTTTACCAGGATCCACTTGGAACTGGCCAGTTCAGTTCCAAAGGCCTTTATTAGTCTCT
 TTTGACAGAAACATTGACCTGGCAACGCCTTTACACCATACGTGGACATACCAAGCGCTGGTACACGAT
 GTGCTGGATTTCCACTTAAACAGAGTAAATTTGGAAGAATCTACAGGAGTGGAAAATCTCCAGCTGGTG
 CTAGACCAAAGAGGAAAAACAAGAAGTCTTACGACTTAACTCCAGTTGATAAATCTGGCAGAAGCATAA
 AGGAAGTCCATTTCCAGAAGTCCGAGAATCAGTCCAACAAGAAGTGAATCTTACAGAGCACAAGAAGT
 GAGGTCAAACGACTGAAGAGCATTATGGGACTAGAAGGAGAGGATGAAGGGGCCATCAGCATGCTTTCTG
 ATAACACTGCTAAGCTCACATCAGCTGTCAGTTCTTTGCCAGAACTCCTTGAAAAAAAAGACTTATTGA
 TCTGCACACAAAATGTTGCCACTGCTGTTTTAGAACACATAAAGGCAAGAAAAGTGGATGATATTTTGAA
 TATGAAGAAAAATAATGAGCAAGACTACTCTGGATAAGTCCCTCTAGACGTCATATCCGACCCTGATG
 CAGGGACTCCGGAAGACAAAATGAGGCTGTTTCTTATCTATTACATAAGCGCACAGCAAGCACCGTCCGA
 GTTTGATTTGGAGCAGTATAAAAAGGCTTAAACAGATGCAGGCTGCAACCTTAGCCCTTTACAGTATATC
 AAGCAGTGAAGGCTTTTCCAAGATGGCCTCACTCCTGCCAGCTACGGAAACTACCCTAAACCAA
 TGGGTCTCCTGTCCGAGTCATGAATACAGGATCACAGTTGTGATGGAAGGTGTGAAGAACCTGGTATT
 GAAGCAGCAGAATCTACCTGTTACTCGGATTTTAGACAATCTCATGGAGATGAAGTCAAACCTGAACT
 GATGATTATAGATATTTTATCCAAAATGCTGCGGAGTAAAGTACAGCTCAGTTCTAGGAACAAAAGTC
 CATTCCAAGAGGCCATTGCTTTTGTGGTAGGAGGAGGCAACTATATTGAATATCAGAATCTTGTGACTA
 CATAAAGGCAAAGCAAGGCAAGCATATCTTATATGGCTGCAGTGAAGTTTTAATGCTACACAGTTCATA
 AACAGCTGTCACAGCTTGGACAAAAA

ACGCGTACGCGGCCGCTCGAG – GFP Tag – GTTTAA

Protein Sequence:

>MG220601 representing NM_029825
 Red=Cloning site Green=Tags(s)

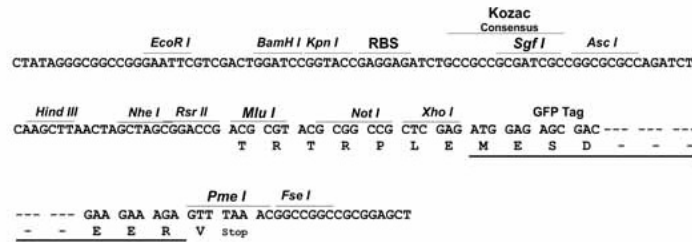
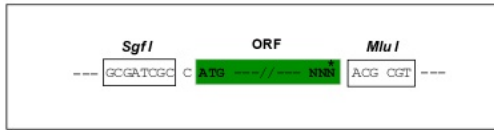
MVGSKMAATASIRERQTVALKRMLNFVPHVKNSTGEPVWVLIYDRFGQDIISPLL SVKELRDMGITLH
 LLLHSDRDPIDVPAVYFVMPTEENIDRLCQDLRNQLYESYLLNFISAISRKLEDIANAALAASAVTQV
 AKVFDQYLNFI TLEDDMFVLCNQNKELVSYRAINRPDITDTEMETVMDTIVDSLFCFFVTLGAVPIIRCS
 RGTAAEMVAVKLDKCLRNLRDARNSLFTGDPLGTGQFSFQRPLLVLDNRIDLATPLHHTWTYQALVHD
 VLDFHLNRVNLEESTGVENSPAGARPKRKNKSYDLTPVDKFWQKHGSPFPEVAESVQQELESYRAQED
 EVKRLKSI MGLEGEDEGAISMLSDNTAKLTSAVSSLPELLEKRLIDLHTNVATAVLEHIKARKLDVYFE
 YEEKIMSKTTLDKSLLDVSDPDAGTPEDKMRLFLIYYISAQQAPSEVDLEQYKKALTDAGCNLSPLQYI
 KQWKAFKMASTPASYGNTTTKPMGLLSRVMTGSQFVMEGVKNLVLKQQLPVTRILDNLMEMKSNPET
 DDYRYFDPKMLRSNDSSVPRNKSFPQEAI VVVGGNVIEYQNLVDYIKAKQGHILYGCSEIFNATQFI
 KQLSQLGQK

TRTRPLE – GFP Tag – V

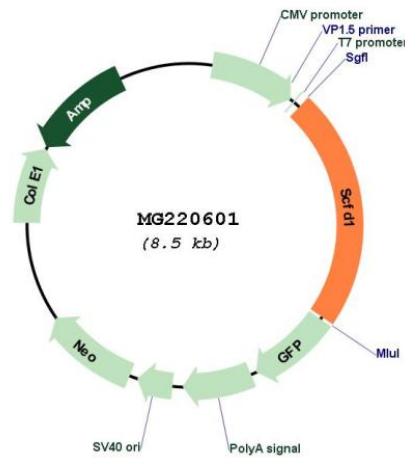
Restriction Sites: SgfI-MluI

Cloning Scheme:

Cloning sites used for ORF Shutting:



Plasmid Map:



ACCN: NM_029825

ORF Size: 1917 bp

OTI Disclaimer:	The molecular sequence of this clone aligns with the gene accession number as a point of reference only. However, individual transcript sequences of the same gene can differ through naturally occurring variations (e.g. polymorphisms), each with its own valid existence. This clone is substantially in agreement with the reference, but a complete review of all prevailing variants is recommended prior to use. More info
OTI Annotation:	This clone was engineered to express the complete ORF with an expression tag. Expression varies depending on the nature of the gene.
Components:	The ORF clone is ion-exchange column purified and shipped in a 2D barcoded Matrix tube containing 10ug of transfection-ready, dried plasmid DNA (reconstitute with 100 ul of water).
Reconstitution Method:	<ol style="list-style-type: none">1. Centrifuge at 5,000xg for 5min.2. Carefully open the tube and add 100ul of sterile water to dissolve the DNA.3. Close the tube and incubate for 10 minutes at room temperature.4. Briefly vortex the tube and then do a quick spin (less than 5000xg) to concentrate the liquid at the bottom.5. Store the suspended plasmid at -20°C. The DNA is stable for at least one year from date of shipping when stored at -20°C.
RefSeq:	NM_029825.3 , NP_084101.1
RefSeq Size:	2091 bp
RefSeq ORF:	1920 bp
Locus ID:	76983
UniProt ID:	Q8BRF7
Cytogenetics:	12 B3
Gene Summary:	Plays a role in SNARE-pin assembly and Golgi-to-ER retrograde transport via its interaction with COG4. Involved in vesicular transport between the endoplasmic reticulum and the Golgi (By similarity).[UniProtKB/Swiss-Prot Function]