

Product datasheet for **MG220584**

Agbl2 (NM_178755) Mouse Tagged ORF Clone

Product data:

Product Type:	Expression Plasmids
Product Name:	Agbl2 (NM_178755) Mouse Tagged ORF Clone
Tag:	TurboGFP
Symbol:	Agbl2
Synonyms:	4930524K04; A430081C19Rik; CCP2
Mammalian Cell Selection:	Neomycin
Vector:	pCMV6-AC-GFP (PS100010)
E. coli Selection:	Ampicillin (100 ug/mL)



[View online »](#)

ORF Nucleotide Sequence:

>MG220584 representing NM_178755
 Red=Cloning site Blue=ORF Green=Tags(s)

TTTTGTAATACGACTCACTATAGGGCGGCCGGAATTCGTCGACTGGATCCGGTACCGAGGAGATCTGCC
 GCC**CGCATCGCC**

ATGAATGCTCTGCTTGGATGGCTTTTCTTTCACAGACTCTTCTGATCCCTATGAGGACTTTATTCACC
 ATCACCTCCAGTATTATGGATATTTCAAAGCTCAGAAAAGCAGCCTGCCAACTCAGGCACTCATCAGCG
 CGTTTGGAGGAACAGCCCTCGGTACATGTTGAATGGCTCTTTGGAGAAAAGAGATGATTTTCATCTCGGAC
 AGTTTGGAAAAAGAGATGCTTCTGTGGCTACCTGTTTATCTTCAACTGGGCATGCTCACATAGACGCTG
 TAAACAGAGACTCACTTCTGCTGAGCTCGCCGCTCCTGAGGACCAGGCAGCTGATTTTTGATGAGCTAGA
 TGAAGCAAGCCCACGGCTTCGAGAACCCCGAGAACTCTTCTCATGTTTCTTAGCAGAGGGCCGCTGCAG
 GCTCCAAGATGGCCAATCGAATGTGAGGTCATCAAGGAAAACATTCATCACATTGAGTGGTTCCACATC
 AACCAGAAATTTCTACCAACCTACAGGAAGCGAGAAGGTGCCAGAGATTGTGGGAGAGGAGCAAGGTAC
 AGTTGTGTACCAGCTAGATTCACTGCCTGCAGAAGGCACCTATTTCACTAGTTCCAGAATAGGAGGCAAA
 CGAGGGACCATCAAGGAACCTTGCTGTCACACTGCAAGGGCCGGAGACAATACTCTATTGTTTGAGTCAA
 GTTTTGAGAGCGGGAATCTGCAGAAAGCCGTACAGTAGGTATCTATGAGTACGAGCTCACCTTGGCGAC
 TGACCTCTACACGGACAAACACACTCAGTGGTTTTACTTCAGAGTTTCAAGAACCCAGAAAAGACGCTACC
 TATCGCTTACCATCGTCAACTTGCTGAAACCCAGAGCCTTTACGCAGTAGGCATGAAGCCTCTCATGT
 ACTCTCAGCTGGATGCCACCATCTACAACATCGGCTGGAGGAGAGAGGGCCGTGAAATCAAGTACTACAA
 GAACAATGTGGACGACGGCCAGCAGCCCTTATACTGCCTCACCTGGACCCTCAGTTTCTCACGACCAG
 GACACTTGCTTCTCGCACACTTTTACCCATACACTTATACTGACTTGAATGCTATCTCTTGTGCTAGT
 CAAACAACCCATCCAGTCTCAGTTCTGCAAGCTCCGAGCCCTATGCAGGAGCCTAGCAGGGAACACTGT
 CTACCTGCTGACCATCACCAACCCATCCAGGACCCTCAAGAGGCAGCCGCAAGAAAGCTGTGGTCTTG
 AGCGCCCGAGTCCACCCTGGAGAGAGTAACAGCTCCTGGATCATGAACGGCTTTTTGGACTTCATCCTTA
 GCAACTCTCCCGATGCCAGCTCCTCAGGGATATCTTTGTCTTCAAGGTGATTCCCATGTTAAACCCAGA
 TGGCGTGATAGTGGGAACTATCGGTGTTGCTGGCTGGAAGGGACTTGAACAGGCATTATAAAACCGTT
 CTTAAGGACTCCTTCCCTTGCAATTTGGTACACCAAGAACATGATCAAAGGCTTCTGGAAGAAAGAGAGG
 TTCTCTTGTACTGTGATTTCCATGGGCATAGCCGCAAGAACAACATCTTCTGTATGGCTGTCACAGCAA
 CAACCGCAAGCACTGGCTCCATGAGCGTGTCTTCTTTAATGTTGAGCAAGAATGCACCAGACAAGTTC
 TCTTTCGACAGCTGTAACTTTAAGTCCAAAAATGCAAAGAAGGAACGGGAAGAGTGGTGTGTGGCGGA
 TGGGCATCATCAACAGCTACCCATGGAGTCTACCTTTGGCGGGTCTACCCTGGGTAGTAAAAGAGACAC
 TCACTTTACCATTGAGGACCTGAAGTCCCTAGGGTATCATGTCTGTGACACTCTTCTGGATTTCTGTGAT
 CCTGACCAAAACCAAGTACACACAGTGTCTACAAGAGCTTAAGGAGCTCCTACAACAGGAAATCAACAAAA
 AGTTGAATAACTTTGGACAAGATATGGATTTAGAAGGAAACTGGAGTGACATTCTTTGTCTGACATTGA
 ATCCAGCACGAGTGGCTCGGACAGCTCCCTCTCCGATGGCCCTCCCATTCGTCTACTGAACATCGTTGCA
 GATGAGCCAAATCAGAAGACGGTGTAAAGAATCCAAAAAGAAGAGACTTCAGACTAGAAAACAGCGGA
 ATGAGCAGTACCAGAAGAGCTACTTGATGCGGGAGTTAAAGTTAACAGAAAACGCCCCAGGAAGGGCGGA
 ATTTGTCTACTCTGCAAAAAGCAGCCTACTTTTTTGAAGTCCAGAGAGTCTAGCCCTCAGTAAGG
 AGAAGTAAAACCAAGGCTCAATGAGACACAGTTAAGTGAAGAGAGAAGGGCACCTCCCTGGATCCAC
 CACTGACCAGCCCTAAGAATAAAGAAAGAATTCAGAGTAAGAAGCCAGGCTTTACAGCATCATGCTCTCC
 AAAGAGAAGCACAACTCCAGCCTAGGGCCAGCTCCAGATGTGAAGCCAACTGGTCTAAGACTAGATAC
 TCTGCCACAAGGAAGGACCATGCCACCATGGCCGTGTACCCATCCTTGATATATACACATACCCA

ACGCGTACGCGGCCGCTCGAG - GFP Tag - GTTTAA

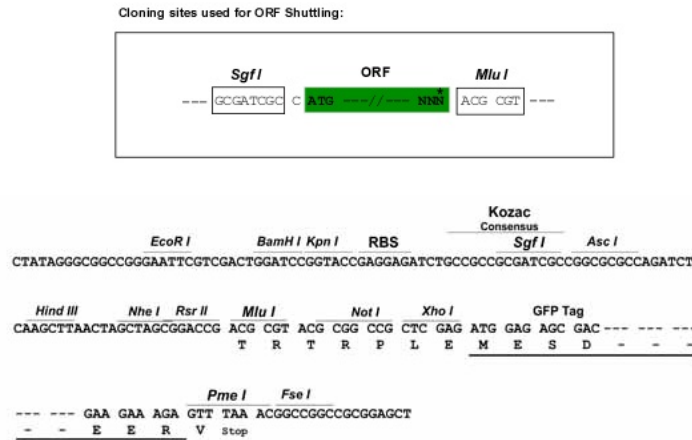
Protein Sequence: >MG220584 representing NM_178755
Red=Cloning site Green=Tags(s)

MNVLLEMAFLSQTLDPDYEDFIHHHLQYYGYFKAQKSSLPNSGTHQRVWRNSPRYMLNGSFGERDDFISD
SLEKEMLLWPTCLSSTGHAHIDAVNRDLLLLSSPLLRTQLIFDELDEASPRLREPRELFSCFSSRGPLQ
APRWPIECEVIKENIHIEWVPHQPEYFYQPTGSEKVEIVGEEQGTVVYQLDSVPAEGTYFTSSRIGGK
RGTIKELAVTLQGPDDNTLLFESRFESGNLQKAVRVGIYEYELTLRTDLYTDKHTQWFYFRVQNRKDAT
YRFTIVNLLKPKSLYAVGMKPLMYSQLDATIYNIQWRREGREIKYYKNNVDDGQQPLYCLTWTTQFPHDQ
DTCFFAHFYPTYTYDLQCYLLSVANNPIQSQFCKLRALCRSLAGNTVYLLTITNPSRTPQEAANKAVVL
SARVHPGESNSSWIMNGFLDFILSNPDAQLLRDIFVFKVIPMLNPDGVIYGNRYRCSLAGRDLNRHYKTV
LKDSFPCIWYTKNMIKRLLLEEREVLLYCDFHGHSRKNNIFLYGCHSNNRKHWHERVPLMLSKNAPDKF
SFDSCNFVQKCKEGTGRVVMWRMGIINSYTMESTFGGSTLGSKRDTHFTIEDLKSLGYHVCDTLLDFCD
PDQTKYTQCLQELKELLQQEINKKLNNGQDMDLEGNWSDIPLSDIESSTSGSDSSLSDGPPIRLLNIVA
DEPNQKTVLKNPKKKRLQTRKQRNEQYQKSYLMRELKL TENAPGRARFVSTLQKQPTFLKSPESPSVSR
RSENPRLNETQLSGREKGTSLDPPLTSPKNKERIQSKKPGFTASCSPKRSTNSSLGPAPDVKPNWSKTRY
SATRKDHATMAVYPSLHIYTYP

TRTRPLE - GFP Tag - V

Chromatograms: https://cdn.origene.com/chromatograms/ja1952_e09.zip

Restriction Sites: Sgfl-MluI

Cloning Scheme:


ACCN: NM_178755

ORF Size: 2586 bp

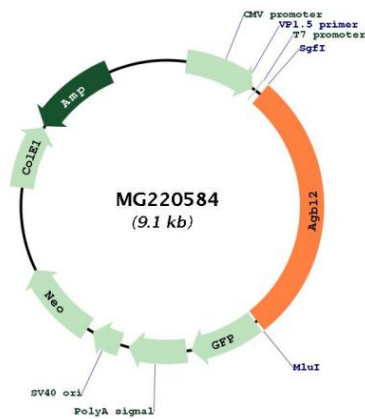
OTI Disclaimer: Due to the inherent nature of this plasmid, standard methods to replicate additional amounts of DNA in E. coli are highly likely to result in mutations and/or rearrangements. Therefore, OriGene does not guarantee the capability to replicate this plasmid DNA. Additional amounts of DNA can be purchased from OriGene with batch-specific, full-sequence verification at a reduced cost. Please contact our customer care team at custsupport@origene.com or by calling 301.340.3188 option 3 for pricing and delivery.

The molecular sequence of this clone aligns with the gene accession number as a point of reference only. However, individual transcript sequences of the same gene can differ through naturally occurring variations (e.g. polymorphisms), each with its own valid existence. This clone is substantially in agreement with the reference, but a complete review of all prevailing variants is recommended prior to use. [More info](#)

OTI Annotation: This clone was engineered to express the complete ORF with an expression tag. Expression varies depending on the nature of the gene.

Components:	The ORF clone is ion-exchange column purified and shipped in a 2D barcoded Matrix tube containing 10ug of transfection-ready, dried plasmid DNA (reconstitute with 100 ul of water).
Reconstitution Method:	<ol style="list-style-type: none"> 1. Centrifuge at 5,000xg for 5min. 2. Carefully open the tube and add 100ul of sterile water to dissolve the DNA. 3. Close the tube and incubate for 10 minutes at room temperature. 4. Briefly vortex the tube and then do a quick spin (less than 5000xg) to concentrate the liquid at the bottom. 5. Store the suspended plasmid at -20°C. The DNA is stable for at least one year from date of shipping when stored at -20°C.
RefSeq:	<u>NM_178755.4</u>
RefSeq Size:	3462 bp
RefSeq ORF:	2589 bp
Locus ID:	271813
UniProt ID:	<u>Q8CDK2</u>
Cytogenetics:	2 E1
Gene Summary:	<p>Metalloprotease that mediates deglutamylation of target proteins. Catalyzes the deglutamylation of polyglutamate side chains generated by post-translational polyglutamylation in proteins such as tubulins. Also removes gene-encoded polyglutamates from the carboxy-terminus of target proteins such as MYLK. Does not show dephosphorylation or deglycosylase activities from the carboxy-terminus of tubulin.[UniProtKB/Swiss-Prot Function]</p>

Product images:



Circular map for MG220584