

Product datasheet for **MG220554**

Pigl (NM_001039536) Mouse Tagged ORF Clone

Product data:

Product Type: Expression Plasmids
Product Name: Pigl (NM_001039536) Mouse Tagged ORF Clone
Tag: TurboGFP
Symbol: Pigl
Synonyms: Gm737
Mammalian Cell Selection: Neomycin
Vector: pCMV6-AC-GFP (PS100010)
E. coli Selection: Ampicillin (100 ug/mL)
ORF Nucleotide Sequence: >MG220554 representing NM_001039536
Red=Cloning site Blue=ORF Green=Tags(s)

TTTTGTAATACGACTCACTATAGGGCGGCCGGAATTCGTCGACTGGATCCGGTACCGAGGAGATCTGCC
GCC**CGATCGCC**

ATGGAATTGGTGGGTTTCTTGTGTGTGGCCGTGGCTGTCCTGACTTGGGGCTTCTCCGGGTTTGGAACT
CAGCGAACGAATGAGGTCTCCGGAGCAGGCGGGCTGCCGGGAGCCGGAAGCCGGGCCCTTGTAGTGAT
CGCGCACCCGGACGATGAAGCCATGTTCTTTGCTCCCACCATGCTAGGCTTGGCACGCCTGGAGCAGCAG
GTGTCCCTGCTCTGCTTCTCCTCAGGAACTACTACAATCAAGGTGAGATTCGAAAGAAAGAGCTTCTGC
AAAGCTGTGCTGTGTTGGGGATTCCACCTTCCCGTGAATGATTATTGACAAGAGGGACTTCCGGATGA
TCCAGAAGTGCAGTGGGACACGGAGCTCGTGGCCAGCACCTCCTTCAGCACATACATGCCAATGGCACT
GACCTGGTGGTGACTTTTGTGAGCAGAAGGAGTCAAGTGGTCAACAGCAACCATATTGCTTTGTACAAAGCTG
TGAGGGCCCTGCACTCAGGAGGGAAGCTGCCTAAAGGGTGTCCGTGCTCACGCTCCAGTCTGTGAACGC
GCTTCGGAAGTACGCCTTCTCCTGGATCTGCCCTGGACTCTGCTGTACCCAGGATGTTCTTTGTG
CTCACCAGCAAAGAAGTGGCACAGGCCAAGAAAGCCATGTCTGCCACCGCAGCCAGCTCCTCTGTTCC
GATACCTCTACGTCCTTCTCCAGATACATGAGAATCAACTCACTCACTGCGGTTCTC

ACGCGTACGCGGCCGCTCGAG - GFP Tag - GTTTAA



[View online »](#)

Protein Sequence: >MG220554 representing NM_001039536
Red=Cloning site Green=Tags(s)

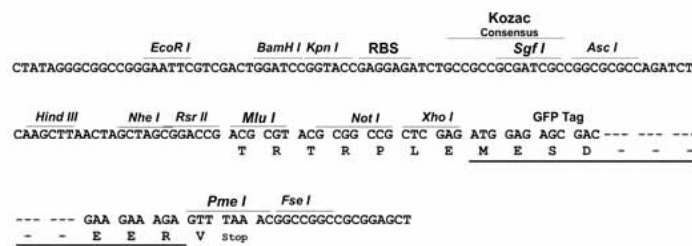
MELVGFLCVAVAVLTWGFLRVWNSAERMRSPEQAGLPGAGSRALVVI AHPDDEAMFFAPTMLGLARLEQQ
 VSLLCFSSGNYYNQGEIRKKELLQSCAVLGIPPSRVMIIDKRDFFDDPEVQWDELVASTLLQHIHANGT
 DLVVTFDAEGVSGHSNHIALYKAVRALHSGGKLPKGC SVLTLQSVNALRKYAFLLDLPWTLLSPQDVLV F
 LTSKEVAQAKKAMSCHRSQLLWFRYLYVLF SRYMRINSLRFL

TRTRPLE - GFP Tag - V

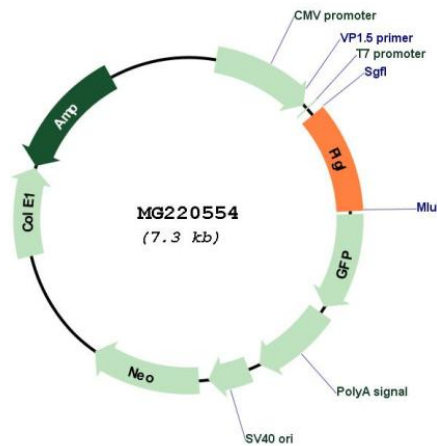
Restriction Sites: SgfI-MluI

Cloning Scheme:

Cloning sites used for ORF Shutting:



Plasmid Map:



ACCN: NM_001039536

ORF Size: 756 bp

OTI Disclaimer:	The molecular sequence of this clone aligns with the gene accession number as a point of reference only. However, individual transcript sequences of the same gene can differ through naturally occurring variations (e.g. polymorphisms), each with its own valid existence. This clone is substantially in agreement with the reference, but a complete review of all prevailing variants is recommended prior to use. More info
OTI Annotation:	This clone was engineered to express the complete ORF with an expression tag. Expression varies depending on the nature of the gene.
Components:	The ORF clone is ion-exchange column purified and shipped in a 2D barcoded Matrix tube containing 10ug of transfection-ready, dried plasmid DNA (reconstitute with 100 ul of water).
Reconstitution Method:	<ol style="list-style-type: none">1. Centrifuge at 5,000xg for 5min.2. Carefully open the tube and add 100ul of sterile water to dissolve the DNA.3. Close the tube and incubate for 10 minutes at room temperature.4. Briefly vortex the tube and then do a quick spin (less than 5000xg) to concentrate the liquid at the bottom.5. Store the suspended plasmid at -20°C. The DNA is stable for at least one year from date of shipping when stored at -20°C.
RefSeq:	NM_001039536.4
RefSeq Size:	1657 bp
RefSeq ORF:	759 bp
Locus ID:	327942
UniProt ID:	Q5SX19
Cytogenetics:	11 B2
Gene Summary:	Involved in the second step of GPI biosynthesis. De-N-acetylation of N-acetylglucosaminyl-phosphatidylinositol (By similarity).[UniProtKB/Swiss-Prot Function]