

Product datasheet for **MG220542**

Ehd2 (NM_153068) Mouse Tagged ORF Clone

Product data:

Product Type:	Expression Plasmids
Product Name:	Ehd2 (NM_153068) Mouse Tagged ORF Clone
Tag:	TurboGFP
Symbol:	Ehd2
Synonyms:	BC027084; C130052H20Rik
Mammalian Cell Selection:	Neomycin
Vector:	pCMV6-AC-GFP (PS100010)
E. coli Selection:	Ampicillin (100 ug/mL)



[View online »](#)

ORF Nucleotide Sequence:

>MG220542 representing NM_153068
 Red=Cloning site Blue=ORF Green=Tags(s)

TTTTGTAATACGACTCACTATAGGGCGGCCGGGAATTCGTCGACTGGATCCGGTACCGAGGAGATCTGCC
 GCC**CGGATCGCC**

ATGTTTCAGCTGGCTGAAGAAGGGCGGGGCCGGGGCCAGCGACCTGAGGCCATCCGACCCGTGACCTCAT
 CCCTCAAGGAGCTGTATCGCACGAACTTCTCCCTGGAGGAACACTACCGTTTTGGGTCTTCCATTC
 ACCGGCCCTTGAAGATGCTGACTTCGACGGCAAACCCATGGTGTGGTGGCCGGCCAGTATAGCACCGGC
 AAAACCAGCTTCACTCCAGTACCTTCTGGAGCAGGAAGTCCCTGGCTCCCGCTGGGTCCCGAGCCACCA
 CCGACTGCTTCGTGGCTGTATGCATGGCGAGACAGAGGCCACCGTGCCCGGAAATGCTCTCGTTGTGGA
 CCCAGAGAAGCCCTTCGCAAACCAACCTTTTGAAACACTTTTCTCAACAGGTTTATGTGCGCCAA
 CTCCCAACCAGGTCCTGGAGAGCATCAGCATCATCGACACGCCTGGCATCTATCAGGTGCAAAACAGA
 GAGTGAGCCGTGGCTACGACTTCCAGCTGTCTGCGCTGGTTTGTGAACGCGTGGACCTCATCATCTT
 GCTCTTTGATGCCACAAGCTGGAGATTTCCGATGAATTCGAGGCCATCGGTGCCTTGGTGGCCAC
 GAGGATAAGATCCGCGTGGTACTCAACAAGGCAGACATGGTGGAGACACAGCAGCTGATGCGCGTCTACG
 GGGCGCTCATGTGGCGCTGGGCAAGTGGTGGGCACGCCTGAGGTCCTTCGCGTCTACATTGGCTCCTT
 CTGGTCCCAGCCGCTCCTTGTGCCGGACAACCGCGCTTTTTCGAGCTGGAGAACAGGACCTTCCCGT
 GATATCCAAGGCCTACCGCGCATGCGCGCTGCGCAAGCTCAACGACCTAGTGAAACGGGCGCGCTGG
 TGCGGGTACACGCTTACATCATCAGCTACCTGAAGAAAGAGATGCCACCGGTGTTTCGGGAAGGAAAAA
 GAAGAAGCAGCTGATCCTGAAGCTGCCTGTCATCTTTCGGAAGATCCAGCTGGAGCACCACATCTCCCT
 GGAGACTTCTGACTGCCAGAAGATGCAGGAGCTGTTGATGGCAGTACTTACCAAGTTCACCTCGC
 TAAAGCCGAAGCTGCTGGAGGCGCTAGATGACATGCTGGCCCAAGACATTGCCAAGCTTATGCCGCTGCT
 TCGGCAGGAGGAGCTGGAGAGTGTGAGGCTGGAGTGCAGGGCGGTGCGTTTTGAGGGCACCCGATGGGC
 CCCTTCGTGGAGCGGGCCCTGATGAAGCAATAGAGGATGGTGGAGGGGCTCAGAAGATGATGCCGAAT
 GGGTGGTGACCAAGGACAAGTCCAAATACGATGAAATCTTCTACAACCTAGCTCCTGCTGATGGCAAGCT
 GAGTGGCTCTAAGGCCAAAACCTGGATGGTGGGCACAAAGCTACCCAACCTGTGCTGGGGAGAATCTGG
 AAGCTGAGCGATGTGACCGAGACGGCATGCTGGATGATGAGGAGTTGCCTTGGCCAGCCACCTCATTG
 AGGCTAAGCTCGAAGCCATGGTCTACCCACCAACCTACCCCGCCGCTGGTGGCCCTTCTAAGCGACG
 ACAGAAGGGCTCTGCTGAA

AG**CGGACCG**ACGCGTACGCGGCCGCTCGAG - GFP Tag - GTTTAA

Protein Sequence:

>MG220542 representing NM_153068
 Red=Cloning site Green=Tags(s)

MFSWLKKGARGQRPEAIRVTSSSLKEL YRTRKLLPLEEHYRFGSFHSPALEDADFDGKPMVLVAGQYSTG
 KTSFIQYLLEQEVPGSRVGPPTTDCFVAVMHGETEGTVPGNALVVDPEKPFKLNPFNGTFLNRFMCAQ
 LPNQVLESISIIDTPGILSGAKQVRVSRGYDFPAVLRWFAERVDLIILLFDAHKLEISDEFSEAIGALRGH
 EDKIRVVLNKAADMVETQQLMRVYGALMWALGKVVGTPEVLRVYIGSFWSQPLLVPDNRRLFELEEQLFR
 DIQGLPRHAALRKLNDLVKRRLVRVHAYIISYLKKEMPVFGKENKKKQLILKLPVIFAKIQLEHHISP
 GDFPDCQKMQELLMAHDFTKFHSCLKPKLLEALDDMLAQDIAKLMPLLRQEELSVAGVQGGAFEGTRMG
 PFVERGPDEAIEDGEEGSEDDAEWVVTKDKSKYDEIFYNLAPADGKLSGSKAKTWMVGTKLPNSVLGRIW
 KLSVDVDRDGLDDEEFALASHLIEAKLEGHGLPTNLPRLVPPSKRRQKGSAAE

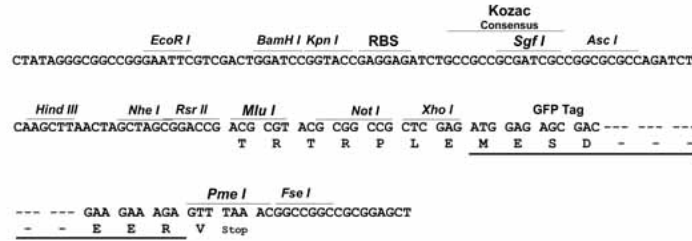
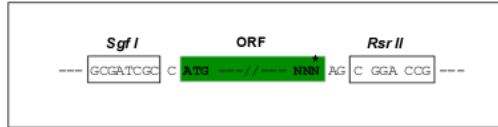
SGP**TRTRRLE** - GFP Tag - V

Restriction Sites:

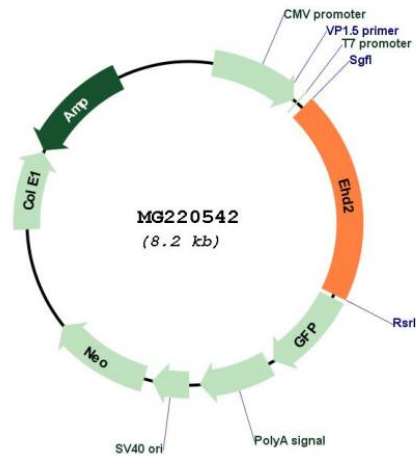
Sgfl-RsrII

Cloning Scheme:

Cloning sites used for ORF Shuttling:



Plasmid Map:



ACCN:	NM_153068
ORF Size:	1629 bp
OTI Disclaimer:	The molecular sequence of this clone aligns with the gene accession number as a point of reference only. However, individual transcript sequences of the same gene can differ through naturally occurring variations (e.g. polymorphisms), each with its own valid existence. This clone is substantially in agreement with the reference, but a complete review of all prevailing variants is recommended prior to use. More info
OTI Annotation:	This clone was engineered to express the complete ORF with an expression tag. Expression varies depending on the nature of the gene.
Components:	The ORF clone is ion-exchange column purified and shipped in a 2D barcoded Matrix tube containing 10ug of transfection-ready, dried plasmid DNA (reconstitute with 100 ul of water).
Reconstitution Method:	<ol style="list-style-type: none">1. Centrifuge at 5,000xg for 5min.2. Carefully open the tube and add 100ul of sterile water to dissolve the DNA.3. Close the tube and incubate for 10 minutes at room temperature.4. Briefly vortex the tube and then do a quick spin (less than 5000xg) to concentrate the liquid at the bottom.5. Store the suspended plasmid at -20°C. The DNA is stable for at least one year from date of shipping when stored at -20°C.
RefSeq:	NM_153068.3 , NP_694708.2
RefSeq Size:	3058 bp
RefSeq ORF:	1632 bp
Locus ID:	259300
UniProt ID:	Q8BH64
Cytogenetics:	7 8.65 cM
Gene Summary:	ATP- and membrane-binding protein that controls membrane reorganization/tubulation upon ATP hydrolysis (PubMed:24508342). Plays a role in membrane trafficking between the plasma membrane and endosomes. Important for the internalization of GLUT4 (PubMed:14676205). Required for fusion of myoblasts to skeletal muscle myotubes. Required for normal translocation of FER1L5 to the plasma membrane (PubMed:18502764, PubMed:21177873). Regulates the equilibrium between cell surface-associated and cell surface-dissociated caveolae by constraining caveolae at the cell membrane (By similarity). [UniProtKB/Swiss-Prot Function]