

## Product datasheet for **MG220503**

### Tgm5 (NM\_028799) Mouse Tagged ORF Clone

#### Product data:

Product Type:	Expression Plasmids
Product Name:	Tgm5 (NM_028799) Mouse Tagged ORF Clone
Tag:	TurboGFP
Symbol:	Tgm5
Synonyms:	2310007C07Rik; TGMX; TGx
Mammalian Cell Selection:	Neomycin
Vector:	pCMV6-AC-GFP (PS100010)
E. coli Selection:	Ampicillin (100 ug/mL)



[View online »](#)

**ORF Nucleotide Sequence:**

>MG220503 representing NM\_028799  
 Red=Cloning site Blue=ORF Green=Tags(s)

TTTTGTAATACGACTCACTATAGGGCGGCCGGGAATTCGTCGACTGGATCCGGTACCGAGGAGATCTGCC  
 GCC**CGCATCGCC**

ATGGCCAAAGGCTGCCCCATCACAGGACTAGAGGTGGCCCTCACAGACCTCCAGAGCTCCCAGAACAATG  
 TTCGGCACACACGGAAGAGATCAGTGTGACCGGCTTGTGTCCGCCGAGGCCAGGCCTTCTCCATCAC  
 CCTGTACTTTAAGAATCGGGGCTTCCAGCCAGGCATGGACAGTATCATGTTTGTGGCTGAGACTGGACCC  
 TTGCCGATCTGGCCAAAGGGACTCGGGCAGTATTACAGCTTACAGGCAGTGGTGGCCAAAGCCCTGGA  
 TTGCGTCCCTGGAAGCCAAAGGGCCAACCTCCCTGGAAGTGAGCCTCTGTGCTCCTCCATAGCAGCCGT  
 GGGCCGATACCTCCTGAAAATTCGGATCGACTCCTACCAGGGTTTTGTCACTGCCTACCAGCTGGGGGAG  
 TTTATCCTGCTCTCAATCCCTGGTGCCAGCGGATGCAGTGTATCTGGAGAGTGAGCCCCAGAGGCAGG  
 AGTATGTTGTGAACGATTATGGCTTCATCTACCAAGGGAGCAAGAGTTGGATCCGCCCATGCCCTGGAA  
 TTATGGGCAGTTTGAAGAGAATATCATAGATATCTGCTTGGAGCTGCTAGAGAAGAGCCTGAACCTCCAG  
 GTTGACCCATCCACAGACTGTGCCCTTCGGGGAAGCCCTGTCTACACCAGCAGAGTTGTGTGTGCCATGA  
 TAAACAGCAATGATGACAAACGGAGTGCTCAATGGCAACTGGAGTGAGAATTATGTGGACGGCATCAACCC  
 CGCGGAATGGACTGGCAGCGTGGCCATCCTTAAGCAGTGGCATGCCACAGGCTGCCAACCAGTGCCTAT  
 GGGCAATGCTGGGTCTTTGCTGCTGTATGTGCACAGTGTGAGGTGCCTGGGGATCCCCACCCGCGTGA  
 TCACCAACTTTGACTCTGGCCATGACACCGATGGGAACCTGATCATTGATGAGTATTACGACAACACAGG  
 CAGGATTCTGGAGAATATGAAGAAGGACACCGTCTGGAATTTCCATGTGTGGAATGAGTGTGGATGGCA  
 CGCAAGGACCTCCCTCCTGGATACGGAGGCTGGCAGGTGCTTGTGCTACACCTCAGGAAACCAGCAATG  
 GTCTCTACTGCTGTGGCCCTGCTTCTGTCAAAGCCATCAAAGAGGGAGAAATTGATCTAAACTATGACAC  
 ACGCTTTGCATTTTCTATGGTGAATGCTGACTGCATGTCCTGGCTTGTCTACGGAGGGAAGGAGCAGAAA  
 CTTACACCAGGACACAGCTACTGTTGGGAATTTTATCAGCACGAAGAGCATCCAGAGTGATGAGCGGGATG  
 ACATCACCGAGAGCTACAAGTATGAAGAAGGTTCCCTTCAAGAGAGAGAGGTGTTCTAAAGGCTCTGCA  
 GAAGCTACAGGCGACAAGGTCTCAAGGGCCTCACCAAGCAAACCTCCAATCCCTTCAGCTCTGTGCCACCA  
 AGGCACAACAGTGCCAGGAGTCTGATTACCTTCCCTTCAACCCAGTGTGCTCCAGGTCTCTCTGA  
 AGTTTGAGCTGCTCAACTACCCAAAATGGCCAAAGACATAAACTTTGCTCTGTTGGCTGTCAATATGTC  
 ACCTCAGTTCAAGGATCTCAAACCTCAACTTGAAGTCCAGTCTCTGTTGCAGATGGCAGCCCCCTGGTT  
 CCATTCTGGCAGGACACAGCATTATCACACTGTCCCTGAAGAAGAAAAGAGCTACCCTTGCAAAATCC  
 TCTACTCACAGTACAGCCAGTATCTGTCGACGGACAAGCTAATCCGCATCAGTGCCTGGGTGAAGAGAA  
 GAACAGTCTGAGAAAATCCTGGTGAACAAGATCATCACCTTGACTTTCCCGGGCATCATGATTAATGTT  
 CTAGGAGCTGCCTTTGTGAATCAGCCGCTCACAGTCCAGGTGGTCTTCTCAAACCCGCTCTCAGAGCCGG  
 TTGAGGACTGTGTGCTGACCTTGAAGGAAGTGGTCTCTTTAGAAAGCAGCAGAGAGTTCTCATTGGCGT  
 CCTCAAACCCATCACAAGCCAGCATCACTCTGAAGACCGTCCCCTTCAAGAGTGGCCAAAGGCAGATC  
 CAAGCTAATCTGAGGAGCAATAGGTTTAAAGACATCAAGGGCTACAAGAACGTGTACGTAGACATTGGCT  
 TA

**ACGCGT**ACGCGGCCGCTCGAG - GFP Tag - GTTTAA

Protein Sequence: >MG220503 representing NM\_028799  
 Red=Cloning site Green=Tags(s)

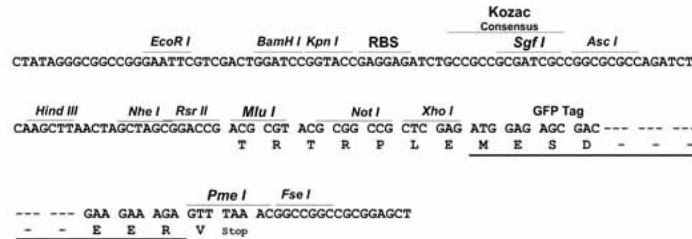
MAQGCPITGLEVALTDLQSSQNNVRHHTEEISVDRLVVRGQAFSITLYFKNRGFQPGMDSIMFVAETGP  
 LPDLAKGTRAVFSFTGSGGPPSPWIASLEANRANSLEVSLCAPPAAVGRYLLKIRIDSYQGFVTAYQLGE  
 FILLFNPWCPADAVYLESEPQRQEYVVNDYGFYIQGKSWIRPCPWNYGQFEENIIDICLELLEKSLNFQ  
 VDPSTDCALRGSPVYTSRVVVCAMINSNDDNGVLNGNWSENYVDGINPAEWGTGSVAILKQWHATGCQPVRY  
 GQCWVFAAVMCTVMRCLGIPTRVITNFDSGHDTGDLNLIIDEYDNTGRILENMKKDVTWNFHVWNECWMA  
 RKDLPPGYGGWQVLDATPQETSNGLYCCGPASVKAIKEGEIDLNYDTRFAFSMVNADCMSWL VYGGKEQK  
 LHQDTATVGNFISTKSIQSDERDDITESYKYEESLQEREVFLKALQKLQATRSQGPQANSNPFSSVPP  
 RHNSARSPDPSLQPSDVLQVSLKFELLNSPKMGQDINFVLLAVNMSPQFKDLKLNLSAQSLLDHGSPLV  
 PFWQDTAFITLFPEEEKSYPCILYSQYSQYLSTDKLIRISALGEEKNSPEKILVNKIITLTFPGIMINV  
 LGAAFVNQPLTVQVFSNPLSEPVEDCVLTLESGLFRKQQRVLIGVLKPHHKASITLKTVPFKSGQRQI  
 QANLRSNRFKDIKGYKNVYVDIGL

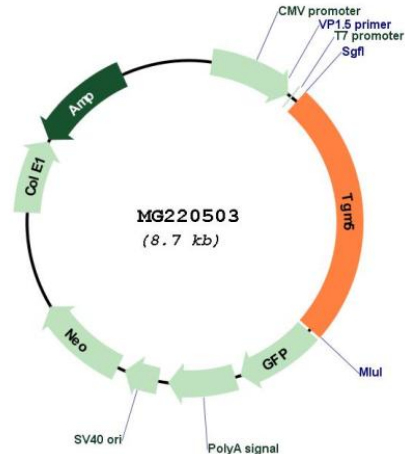
TRTRPLE - GFP Tag - V

Restriction Sites: SgfI-MluI

Cloning Scheme:

Cloning sites used for ORF Shutting:



**Plasmid Map:**


**ACCN:** NM\_028799

**ORF Size:** 2172 bp

**OTI Disclaimer:** The molecular sequence of this clone aligns with the gene accession number as a point of reference only. However, individual transcript sequences of the same gene can differ through naturally occurring variations (e.g. polymorphisms), each with its own valid existence. This clone is substantially in agreement with the reference, but a complete review of all prevailing variants is recommended prior to use. [More info](#)

**OTI Annotation:** This clone was engineered to express the complete ORF with an expression tag. Expression varies depending on the nature of the gene.

**Components:** The ORF clone is ion-exchange column purified and shipped in a 2D barcoded Matrix tube containing 10ug of transfection-ready, dried plasmid DNA (reconstitute with 100 ul of water).

**Reconstitution Method:**

1. Centrifuge at 5,000xg for 5min.
2. Carefully open the tube and add 100ul of sterile water to dissolve the DNA.
3. Close the tube and incubate for 10 minutes at room temperature.
4. Briefly vortex the tube and then do a quick spin (less than 5000xg) to concentrate the liquid at the bottom.
5. Store the suspended plasmid at -20°C. The DNA is stable for at least one year from date of shipping when stored at -20°C.

**RefSeq:** [NM\\_028799.2](#), [NP\\_083075.1](#)

**RefSeq Size:** 2531 bp

**RefSeq ORF:** 2175 bp

**Locus ID:** 74176

UniProt ID: [Q9D7I9](#)

Cytogenetics: 2 E5

Gene Summary: Catalyzes the cross-linking of proteins and the conjugation of polyamines to proteins. Contributes to the formation of the cornified cell envelope of keratinocytes (By similarity). [UniProtKB/Swiss-Prot Function]