

## Product datasheet for **MG220437**

### March11 (NM\_177597) Mouse Tagged ORF Clone

#### Product data:

**Product Type:** Expression Plasmids  
**Product Name:** March11 (NM\_177597) Mouse Tagged ORF Clone  
**Tag:** TurboGFP  
**Symbol:** March11  
**Synonyms:** 9630025C22  
**Mammalian Cell Selection:** Neomycin  
**Vector:** pCMV6-AC-GFP (PS100010)  
**E. coli Selection:** Ampicillin (100 ug/mL)  
**ORF Nucleotide Sequence:** >MG220437 representing NM\_177597  
 Red=Cloning site Blue=ORF Green=Tags(s)

TTTTGTAATACGACTCACTATAGGGCGGCCGGAATTCGTCGACTGGATCCGGTACCGAGGAGATCTGCC  
 GCC**CGATCGCC**

ATGAGCGACGAGGGCAAAAAACGGTCTAGCCGGGCGGACAGCCTCGAAGCTGAGCCACCTCTGCCCCGC  
 CGCCCCACCCCGCCTCCGGGAGAGTCGGTCTGGTCCCCACCTCCCCACGCTACCGGCCCGCGTGC  
 CGCGCCTCTGGAGCGCATCGTAGGGTCGGGCGAGCCCGGTAGAAGTGGCCCTCGGCGCAAGGGCGCA  
 GGAGAGCCTCTACCGCCGCTGCCCGTCTCTGTTGCCCGGCACAGGAGGTGACAGCGCGGGGCGACT  
 CCTGCGAAGTCTTAGGGCCTTCCAGAGGTGAAGCTCCCGAGGCTGCGACGGGAAAGGCAGCCCGGG  
 GGAGCCCGAGGCCGGCGGTGCCGGGAGGGCGAGCGGCGAGGCACCGGAGACCAGCCGAAACACGCTCC  
 GTATGTAGCAGCCGACAGCAGTAGTGGCGGGTAGCGACCAGCGCTCGGGGACACAGCACCAGCACC  
 ATCAGCCCATTTGCAAGATCTGCTTCCAGGGCGCAGAGCAGGGTGAGTTGTTAAATCCTTGCCGATGTGA  
 TGGGTCTGTTTCGATACACACATCAGCTGTGTCTTCTAAAGTGGATCAGTGAGAGAGGCTCCTGGACCTGC  
 GAGCTGTGCTGTTATAGATACCACGTCACAGCCATTAATGAAGCAACCTTGCCAGTGGCAGAGCATT  
 CTATAACTGGTTGAGAAAGTTCAGATGATCGCTGTAATCCTAGGATCCCTGTTCTTAATAGCGAGTGT  
 GACTTGGCTCCTCTGGTCAGCCTTCAGCCCTATGCAGTGTGGCAGAGGAAGGACATCCTTTTTCAAATC  
 TGCTATGGAATGTATGGTTTTATGGATCTAGTGTGCATAGGCCTCATTGTGCATGAAGGAGCTGCCGTT  
 ACAGAGTGTAAAGCGATGGCGAGCTGTTAATTTGCACTGGGATGTGTTAAATTATGACAAAGCCACAGA  
 CATTGAAGAAAGCAGCCGAGGAGTCTCCACAAGTAGGACTTTGTGGTACCATTGTGAGCTCTGAGG  
 AACAGGAACCTGGTCCACCCAACGCAACTAACCTCACCACGGTTTCAGTGTGGCTATGTGCTATTACATC  
 TATTCAATCGGATGAGGGCCATGAAGATGTATCGGAAGATAACGGCTCTGGGGAGGTAGTGATGAGAGT  
 GACGTCTGTG

ACGCGTACGGGCCGCTCGAG - GFP Tag - GTTTAA



[View online >](#)

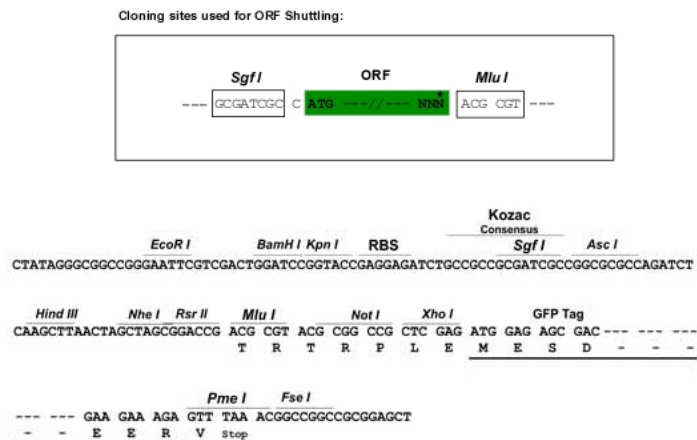
**Protein Sequence:** >MG220437 representing NM\_177597  
 Red=Cloning site Green=Tags(s)

```
MSDEGKKRSSRADSLAEAPPLPPPPPPPPGSEVLVPTSPRYRPPLPAPLERIVGSGEPPVELAPRRKGA
GEPLPPLPSSLPGDQEVTAAGDSCEGPRRLPEVKLPEAATGKGSPEGEAGACREGERRGTGDQPETRS
VCSRSSSSSGGSDQRSQGHQHQQHPICKICFQGAEQGELLNPCRCDGVSRYTHQLCLLKWISERGSWTC
ELCCYRYHVTAIKMKQPCQWQSISITLVEKVQMIAVILGSLFLIASVTWLLWSAFSPYAVWQRKDILFQI
CYGMYGFMDLVCIGLIVHEGAAVYRVFKRWRAVNLHWDVNLNYDKATDIEESSRSGESSTRTLWLPLSALR
NRNLVHPTQLTSPRFQCGYVLLHLFNRMRAHEDVSEDNGSGEVVMRVTSV
```

TRTRPLE - GFP Tag - V

**Restriction Sites:** SgfI-MluI

**Cloning Scheme:**



**ACCN:** NM\_177597

**ORF Size:** 1200 bp

**OTI Disclaimer:** The molecular sequence of this clone aligns with the gene accession number as a point of reference only. However, individual transcript sequences of the same gene can differ through naturally occurring variations (e.g. polymorphisms), each with its own valid existence. This clone is substantially in agreement with the reference, but a complete review of all prevailing variants is recommended prior to use. [More info](#)

**OTI Annotation:** This clone was engineered to express the complete ORF with an expression tag. Expression varies depending on the nature of the gene.

**Components:** The ORF clone is ion-exchange column purified and shipped in a 2D barcoded Matrix tube containing 10ug of transfection-ready, dried plasmid DNA (reconstitute with 100 ul of water).

**Reconstitution Method:**

1. Centrifuge at 5,000xg for 5min.
2. Carefully open the tube and add 100ul of sterile water to dissolve the DNA.
3. Close the tube and incubate for 10 minutes at room temperature.
4. Briefly vortex the tube and then do a quick spin (less than 5000xg) to concentrate the liquid at the bottom.
5. Store the suspended plasmid at -20°C. The DNA is stable for at least one year from date of shipping when stored at -20°C.

**RefSeq:** [NM\\_177597.6](#), [NP\\_808265.2](#)

**RefSeq Size:** 1547 bp

**RefSeq ORF:** 1203 bp

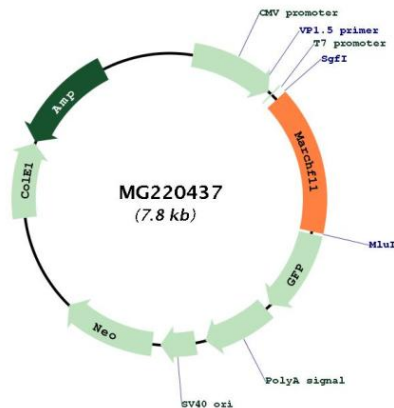
**Locus ID:** 211147

**UniProt ID:** [Q8CBH7](#)

**Cytogenetics:** 15 B1

**Gene Summary:** E3 ubiquitin-protein ligase that mediates polyubiquitination of CD4. E3 ubiquitin ligases accept ubiquitin from an E2 ubiquitin-conjugating enzyme in the form of a thioester and then directly transfer the ubiquitin to targeted substrates. May play a role in ubuquitin-dependent protein sorting in developing spermatids.[UniProtKB/Swiss-Prot Function]

### Product images:



Circular map for MG220437