

## Product datasheet for **MG220431**

### **Bmp2k (NM\_080708) Mouse Tagged ORF Clone**

#### Product data:

Product Type:	Expression Plasmids
Product Name:	Bmp2k (NM_080708) Mouse Tagged ORF Clone
Tag:	TurboGFP
Symbol:	Bmp2k
Synonyms:	4933417M22Rik; AA673486; AV128808; BIKE
Mammalian Cell Selection:	Neomycin
Vector:	pCMV6-AC-GFP (PS100010)
E. coli Selection:	Ampicillin (100 ug/mL)
ORF Nucleotide Sequence:	>MG220431 representing NM_080708 Red=Cloning site Blue=ORF Green=Tags(s)

TTTTGTAATACGACTCACTATAGGGCGGCCGGAATTCGTCGACTGGATCCGGTACCGAGGAGATCTGCC  
GCC**CGATCGCC**

ATGAAGAAGTTCTCTCGGATGCCAAGTCGGAGGGCAGCGGGCGGGGGCGGGCTGGCGGGGCCCGG  
GCGGGGGCTCGGCGGGCTTCGCAAGCTCGTCCATGGGGTCCGGGTGTTCCGCGTCCGCGCTACCA  
GGTCACCTGGAGGAGTCGCTGGCCGAAGGTGATTCTCCACTGTTTTCTGGTCCGACTCACAGTGG  
ATCCGATGTGCACTGAAGCGAATGTATGTCAATAACACACCCGACCTCAACATTTGAAAAGGGAAATCA  
CGATTATGAAAGAGTTATCTGGCCAAAAATATTGTCGGTTATTGGACTGTGCTGCAATTCAATTAG  
TGACAATGTGTGGGAAGTCTTATCTTAATGGAATATTGTCGAGCTGGCAGGTTGTGAACCAGATGAAT  
AAGAAGCTGCAGACAGGCTTTACCGAGTCAGAAGTCTACAAATCTTCTGTGATACCTGCGAAGCTGTCG  
CACGATTGCATCAATGTAAGACTCCCATAAATCCACCGGATCTGAAGGTAGAAAAATTTTGCTAAATGA  
TGCTGAAATATGTGCTTTGTGACTTTGGCAGTGCCACTAATAAATTTCTCAATCCTCAAAAAGATGGA  
GTTAATGTAGTAGAAGAAGAAATAAAAATACACGACTCTGTCGTATAGAGCACCAGAAATGATCAACC  
TTTATGGAGGAAACCGATCACCACCAAGGCTGATATCTGGCCCTGGGATGTTTACTGTATAAACTTTG  
TTCTTCTACTCTTCCTTTTGGTGGAGAGTCAGTTGCTATCTGTGATGGCAGCTTCACCATCCAGACAAT  
TCTCGTACTCCACAACGTGCATTGCTTAGTTAGTTGATGCTTGAACCAGACCCGAGTCCAGACCTG  
ACATATTTCAAGTATCCTACTTTGCGTTTTAAATTCGCCAAAAAGGATTGTCGGTCTCCAACATCAATAA  
TTCTTTTCTTCCATCAACTCTTCCCGAGCCGATGACTGCTACTGAAGCTGCTGCTAGGAAAAAGCCAGATG  
AAAGCCAGAATAACAGATACCATTGGACCAACAGAAACCTCAATTGCACCAAGACAAAGACCAAAAGGCCA  
ATTCCACTGTGCCACTTCCAGTGTGCTGACCATTAGAGTTCAGCAACGCCTGTCAAAGTCCCTGCTCC  
TGGGGAGTTCAGCAACCACAAACCCAAAGGAGCATTGAGACCTGGAAATGGGTCTGAAGTCTTAATGGTT  
CAGGGACCCCTCAGCAACCCACAGCAGCATAGAGTCTCCAGCAGTTGCAGCAGGGAGACTGGAGAT  
TACAGCAACTTCAATTTGCATCGTCATCCCACCACCACATCAGCAACAGCAACAACAGCAACAACAACA  
GCAGCAACAACAGCTGCAGCAACAACAGCAACAGCAACAGCAACTACTTCAAATGCTTACTTGCAGCAG



[View online >](#)

TATCAGCATGCAATGCACCAGCAGCATATACTTCAGCAACAGTTTCTAATGCACTCAGTGTATCAGCCAC  
 AACCGCCTGCATCCCAGTATCCTGCCATGATGCAGCAGTATCAGCAGGCTTTCTTGACAGCAGCAGATGCT  
 AGCTCGCCATCAGCAGCCAGCACAGCAGGTATCACCCGAGTATCTTACCTCCCGCAAGAGTTCTCACCA  
 GCCTTAGTTTCTACGCCTCGTCACTTCCAGCTCAGGTTGGAACCATAGTGGACTCTTCTACGGTGCCA  
 ACAGGTCAGTTGCTGAGAAAGAGGCAGTTGCAATTTTACAAATCAGAAGACCATTAGTACCCTCCTGA  
 CATGTCCAGGCTGGAATCCTTTTGGAGAAGACAATTTTCCAAGTTAACAGAAGAGGAAGTGTGGACAGA  
 GAATTTGACCTTCTAAGATCAAACAGGCTCGGGGCGAGCACACCCTCAGATAAGACTGTAGACCTGCC  
 CCGCTCCACATAGCCGCTCCTCCGAGGAGCCTTTGCTTCCGTCCTTTCAATTTCTCACTCAGGTTCTCC  
 TGAAGAAGAAAACGACGGAACATTCTCCAATCAAAAATCTATCACTGCAAACCTTACAAAAATGGAGGC  
 TCAAGTCCACTATGTAAGATCAGCGAGCCGAAAGAAAACCTCCGAGAATCCCCTAATTAGGGGTCAAG  
 TACAAAAGGGACATGATGATTCTGAAAGTGATTTGAAATCAGACCCCCCTTCTCCTAAGAGCAGTGAAGA  
 AGAACAAGAGGATGAAGACGCACAGGGAGAACACGGGGACTTTAATGATGACGACACTGACCGGAGAAC  
 CTGGGTACAGGCCTCTGCTGATGGACTCTGAAGATGAGGAAGAGGACGACAAACACAGCTCTGATTGAG  
 AGTGTGAACAGGCAAAGACCAAGAGAGGAGACACGAGCTCCCTGCGCAGGGACAAACCTGGCGTGGCCCC  
 AGACACAGCCCTCCTGACCCCGCCGCTCGCCTGCTGATGCGCTGACTCCAGTCAGGAGTTGATGATG  
 TTTGGCGCTGTTCCCTTCTTTGACGCGCTGCTCCGACAGCCTGACAGCAGAGGGGATGGGAAGAACC  
 TGTCACAGCATGCTTTTCCAGAGCAGGAGGACTTCGACGTGTTTCAAAAGGCACCCTTCAACAAGAGGT  
 CAGCGTACAGGACTGGCCCGCGTGGGGCCAGATGCCCGGCTCTGCCTGCACGGCCAGAAAGTGTAGAT  
 ATATTTGGCTCCACTCCCTTCCAGCCCTTCTCCGTGTCAGCCAGTAAAAGTGAAGCAAGGAGGATGTTT  
 TTGGGCTCGTGCCTTTGAGGAAATAACTGGGAGTCAGCAGCAGCAGAAAGTCAAGCAGCGCAGCTTGA  
 GAAACTCTCTCGCCAGAGACGCACAAAGCAGGATGTGTCCAAAGCAATGGGAAGCGCCATCACGGC  
 ACCCTACCAGCGCAAAGAAGACGCTGAAGCCCCCTACCGCAGCCCGAGAGGGCCCGCAGACACAAGA  
 AGGTGGGCGCAGAGACTCCAGAGCAGCAATGAGTTTTTAACCATTTCCGATTCCAAGGAGAACATCAG  
 CGTCGCGCTGACTGATGGCAAAGACAGGGCCAGTGTCTGCCATCTGACGAGAGTCTGTGGACCCATT  
 GGTGCCAAGCCCTTTCATCCTCCAGACTTGTGGCACCAGCCCATCAGGGCCTAAGCGACATCTGGTTG  
 ATCACACCACCATTTGCTGGGAGGCCGACAGAATTCAGTACACGGGTCTTCCACAGCGCAGAGAC  
 ATTGAGAATGGATGACTTTGGTCCGTCGCCCTTACAGAATCGTGGTCAAAGTGTCACTCCACAACAG  
 TCCAACCGGTGCAACTAGACCCCTTTGGTGTCTCCATTTCTTCTAAACAG

ACGCGTACGCGGCCGCTCGAG - GFP Tag - GTTTAA

**Protein Sequence:**

>MG220431 representing NM\_080708  
 Red=Cloning site Green=Tags(s)

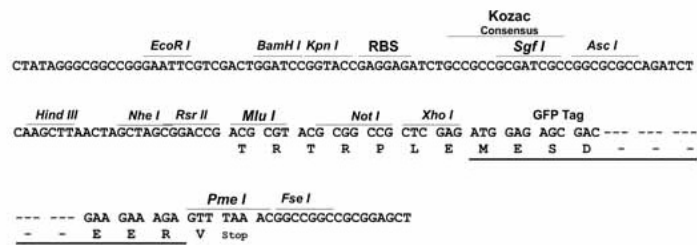
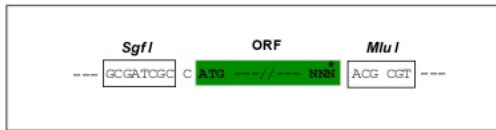
MKKFSRMPKSESGGAAAGGAAGGLGGGFASSSMGVRVFAVGRYQVTLEESLAEGGFSTVFLVRTHSG  
 IRCALKRMYVNNTPDLNICKREITIMKELSGHKNI VGYLDCAVNSISDNVWEVILMEYCRAGQVNVQMN  
 KKLQTFTESEVLQIFCDTCEAVARLHQCKTPIIHRDLKVENILLNDAGNYVLCDFGSATNKFLNPQKDG  
 VNVVEEIIKKYTLSYRAPEMINLYGGKPIITKADIWALGCLLYKLCFFTLPGESQVAICDGSFTIPDN  
 SRYSHNVHCLIRFMLEPDPECRPDIFQVSYFAFKFAKDCPVSNINNSFLPSTLPEPMTATEAAARKSQM  
 KARITDTIGTETSIAPRQRPKANSTAATSSVLTIQSSATPVKVPAPGEFSNHKPKGALRPGNGSEVLMV  
 QGPPQPPQHRVLLQQLQQGDWRLQQLHLHRHPHHHHQQQQQQQQQQQLQQQQQQQQQLLQNAYLQQ  
 YQHMHQHQHILQQFLMHSVYQPQPASQYPAMMQYQQAFLQQMLARHQQPAQVSPPEYLTSPQEFSP  
 ALVSYASSLPAQVGTIVDSSYGANRSVAEKEAVANFTNQKTI SHPPDMSGWNPFGEDNFSKLT EEEELDR  
 EFDLLRSNRLGASTPSDKTVDLPPAPHSRPPPEPFASVPI SHSGSPEKKTTEHSPNQKSITANLTKNGG  
 SSPLCKDQRAGKKTSENPVIRGQVQKGHDDSESDFEEDPPSPKSSEEEQEDEDAQGEHGFNDDDTEPEN  
 LGHRPLLMDSEDEEEDKHSSDSECEQAKTKRGDTSSLRRDKPGVAPDTPARSPADALTPSQEFDV  
 FGAVPFFAAPAPQSLQHRGDGKNLSQHAFPEQEDFDVFTKAPFNKKVSVQDWPVAVGPDARPLPARPRSVD  
 IFGSTPFQPFVSVASKSESKEDVFLVPFEEITGSQQQKVKQRSQKLSRQRRTKQDVSKSNGKRHHG  
 TPTSAKKTLKPPYRTPERARRHKVGRDRSQSSNEFLTISDSKENISVALTDGKDRASVLPSESLDDPF  
 GAKPFHPPDLWHQPHQGLSDICVDHTTILPGRPRQNSVHGSFHS AETLRMDDFGAVPFTLVVQSVTPQQ  
 SQPVLEDPFGAAPPFSKQ

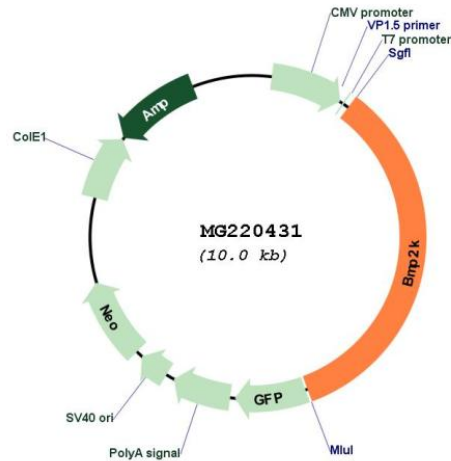
TRTRPLE - GFP Tag - V

Restriction Sites: SgfI-MluI

Cloning Scheme:

Cloning sites used for ORF Shuttling:



**Plasmid Map:**


**ACCN:** NM\_080708

**ORF Size:** 3414 bp

**OTI Disclaimer:** The molecular sequence of this clone aligns with the gene accession number as a point of reference only. However, individual transcript sequences of the same gene can differ through naturally occurring variations (e.g. polymorphisms), each with its own valid existence. This clone is substantially in agreement with the reference, but a complete review of all prevailing variants is recommended prior to use. [More info](#)

**OTI Annotation:** This clone was engineered to express the complete ORF with an expression tag. Expression varies depending on the nature of the gene.

**Components:** The ORF clone is ion-exchange column purified and shipped in a 2D barcoded Matrix tube containing 10ug of transfection-ready, dried plasmid DNA (reconstitute with 100 ul of water).

**Reconstitution Method:**

1. Centrifuge at 5,000xg for 5min.
2. Carefully open the tube and add 100ul of sterile water to dissolve the DNA.
3. Close the tube and incubate for 10 minutes at room temperature.
4. Briefly vortex the tube and then do a quick spin (less than 5000xg) to concentrate the liquid at the bottom.
5. Store the suspended plasmid at -20°C. The DNA is stable for at least one year from date of shipping when stored at -20°C.

**RefSeq:** [NM\\_080708.1](#), [NP\\_542439.1](#)

**RefSeq Size:** 6585 bp

**RefSeq ORF:** 3417 bp

**Locus ID:** 140780

**UniProt ID:** [Q91Z96](#)

**Cytogenetics:** 5 E3

**Gene Summary:** May be involved in osteoblast differentiation.[UniProtKB/Swiss-Prot Function]