

Product datasheet for **MG220421**

Ralgapa1 (NM_001003719) Mouse Tagged ORF Clone

Product data:

Product Type:	Expression Plasmids
Product Name:	Ralgapa1 (NM_001003719) Mouse Tagged ORF Clone
Tag:	TurboGFP
Symbol:	Ralgapa1
Synonyms:	2310003F20Rik; 4930400K19Rik; AI563624; Garnl1; GRIPE; mKIAA0884; Tulip1
Mammalian Cell Selection:	Neomycin
Vector:	pCMV6-AC-GFP (PS100010)
E. coli Selection:	Ampicillin (100 ug/mL)
ORF Nucleotide Sequence:	>MG220421 representing NM_001003719 Red=Cloning site Blue=ORF Green=Tags(s)

TTTTGTAATACGACTCACTATAGGGCGGCCGGAATTCGTCGACTGGATCCGGTACCGAGGAGATCTGCC
GCC**CGATCGCC**

ATGTTCTCTAAGAAGCCGCACGGGGACGTGAAGAAGTCCACCCAGAAGGTGCTGGACACCAAGAAGGACG
CGCTGACCCGCTCAAGCACCTGCGCATCGTCAGAAATGCAGAATCTATTGACCTTAAACAGTTTTT
TGACCAACATTTTTACATATACTATGTGTTTTTTGAAAATTTGTGACTATTGAAGCTAGTCTTAA
CAGAAAGGTCACAAGTCTCAAAGAGAGGAATTAGATGCTATACTTTTTATTTTTGAGAAAATTTACAAC
TTCTTCCAGAAAGAATTCATCAGCGATGGCAATCCATAGTATTGGGTTGATTTTAAAGAACTACTGCA
CACAGGAACTCCTTAAAGATCAGACGGGAAGGTGTCGTCCTTCTTGTATGGTTGCAAGCTCTTCAG
GATAACTGCAGCAAAGAACAGCTCTGGATGTTTTCATGCTTGATCCCTGGATTCTCAGCACCACAATCCG
AATATGGACCTCGGACTTTAGATAATCTTATTAATCCTCCACTCAGCCTTCAAGAACTCAAGTAACTAT
AGAGGAAGTCACTCCTCTGTCCGCCACAGTCAGGAGATAAAGGACAAGAAGACCTCACAAGCTATTTT
CTTGAAGCACTTTTAAATACATAGTAATTCAGGTAAGGTTTACTTGCCTTATTTTTCCAAACATTTG
AAAGGGGATTTTCATTTTTGTTTTACATTTTAAGAAGTTTTACTTGCCTTATTTTTCCAAACATTTG
CAAGGAGAATAGTTTGTATCATCCTGTACTTGATATCCACAGATCAGACCAAAGCCTCATTATGTGATG
ATAAAGAAGGATGCTGAAACCAATGAAACAATATATTGTACAAAAGAGCCTTTCATCCAGGCTCGGGTTA
TTGTCATTGCTGGCTGTTTTCTTCTGGCTGGAGCCAAAACCATTCAGGACCTAATATTCTGGGAT
GGAAGGTGAAGTCTTGCCAAAGAATATTAGAGAGCAGCTGCTAGTTTGGTTTCCAGAGAAGAAAGCAAA
AATGATACTGTTGATAAAGTAGACAAGTCTGCAGAGCCTGAGCAGTCTCATTCCAACACAAGCACTCTCA
CGGAGCGAGAGCCTAGCTCTTCCAGTCTCTGCAGCATCGACGAAGAACATCTCACAGACATCGAAATTTG
TCGAGAGTGTTCATCTAAGAGAAGCAATGTAAGTCTTGTACAGAGATATTTTCGTCAGGCATTTTTTA
TTACCAATTTGTGAAGCAGCAGCTATGAGAAAAGTGGTGAAGTGTATCAAGAATGGATTCAACAAGAGG
AAAAGCCTTTGTTATGCAAGAGCCTGAGGACTGCGATCACTTGTTCAGATATACCCTGCAGCGAAAC
TGTTGCAGACCATGACAGTGCAATAGAAGATGGAGAGAAAAGAGAAGAGGAAAATGGACCAGTACTTCT



[View online >](#)

GAACATGTTTCGCAATTCTAGCTGGACAAAAATGGTTCCTACCAAGAAGCTTTTCATGTCTGTGAAGAAG
 CCACAGAACAGAAATATTCAAGCTGGCACTCAGGCCGTTTTGCAGGTGTTTATTATAAACTCATCGAACAT
 ATTTCTTCTTGAACCTGCAAAATGAAATAAAGAATCTTCTGGATGAGCATACAGATATGTGTAACGCATT
 CTTAATATTTATCGATACATGGTTGTGCAAGTATCAATGGACAAAAAGACCTGGGAACAGATGCTGCTCG
 TGCTGCTCAGAGTCACGGAGTCCGTAAGTGTGTCACAAGCTTTCTGCAGTTCAGGGGAAAAA
 AAGCATGACCCCTGGCGGGTGCAGTTGCAGGACCACTTTTCAGACTCTCATTGTTGCCTGGATCAAAGCA
 AATCTAAATGTATACATTTCTCGAGAATTTGGGATGACTTACTTTCCGGATTGTCATCATTGACCTATT
 GGAAGAATTGGCCACTGAGTGGTCACTGACCATGGAGACACTGACTAAAGTTTTGGCTAGAAAATTATA
 TAGTTTGGATCTCAGTGATTTGCCATTGGATAAGCTCAGTGAACAGAAACAAAAAGCACAAGGGAAAA
 GGAGTTGGACACGAATTTAGAAAAGTTTTCAGTTGACAAGTCAATTTCTAGAGGATGGAGTCGCGATCAGC
 CTGGCCAGGCACCTATGAGACAGAGAAGTGAACGACCACTGGCTCCCCAGGAAGTGAAGAAGCCAGGAG
 TATAGTACGGCAAAAACTGTTGATATTGATGATGCTCAAATCCTTCCCCGCTCAACCAGAGTCAGACAT
 TTTTCACAGAGTGAAGACACTGGAAATGAAGTTTTTGGTGTTCATGAGGAACAGCCACTGCCTCGAA
 GTAGCAGCACTTCTGACATCTTGAACCACTTACTGTTGAGCGAGCCAAAGTAAATAAGAGGACACGAG
 CCCCAACTGCCTCCTTAATAGTGAAGTGGTGGCAACAGCGCAATGTTCTGACCTGATGGATGAG
 TTTATCGCAGAGCGACTTCGAAGTGGCAATGCCTCGACTATGACAAGAAGGGGAGTAGTCCAGGCAGCC
 TTGAAATCCCGAAAGACCTCCCTGATATTCTAAACAAGCAGAACCAGATGCGGCCTGTTGATGACCTGG
 TGTACCCTCCGAATGGACGTCTCCAGCCAGTGCAGGGAGCAGTGTCTCATGAGCTCAGATGCTACTCG
 GATTCCTTCAGTGCCTCCAGTGTGAGGGACGAAAAATTTGACAACCTTTGGCTTCGGGACTGACATTGGGA
 TCCCATCTTCTGCTGATGTGGATTTAGGTTCTGGCCATCATCAAAGCACTGAGGAGCAGGAAGTGGCCAG
 CCTAACTACGCTTCAATTAGATTAGAAAACAAGCAGCCTTAATCAGCAAGCCTTCTGCAAGAAGTTGCA
 ACCGTTACTGGTTCAGAAAAGTCTTCCCCGTTTACTCAGCTCTGGGATCCAGGTCGAGACCCCTCC
 CATCTACACTGAGCAGAGCTCAGATAGAACAGAGGACCTACAGCTCGATGAGAAGCTCCACCACCTGT
 TCTTCAGACGCCGATGACCTAGAAAACAGTGAATTTCCATCTGAATGTTGTAGCGTATGGCAGGAGGT
 ACTCTCACTGGGTGGCATGCTGATGTTGCTACTGTTATGTGGCGAGAATGCTGGCATTGTTGGGAGATG
 TCAATGCTATTATGGATCCTGAAATACATGCTCAAGTTTTGATTACCTCTGTGAACCTTTGGCAGAATCT
 AGCCAAGATCAGAGATAACCTTGGCATTTCAGCTGACAACCTGACTTCCCCTTCTCCACCCGTCCTGATT
 CCTCCACTAAGAATTTACACCTTGGCTTTTTAAGGCAACCATGTTGACTGATAAGTATAAACAAGGTA
 AATTACATGCATATAAATTTATGTAATACAATGAAGAGAAGACAAGATGTATCTCAAATAGAGATTT
 TTTAACACATTTCTACAATATAATGCATTGTGGATTGCTTCATATTGACCAGGACATTGTCAATACGATC
 ATCAAGCACTGCTCACCTCAGTTTTTTTACTCGGTTTGCCTGGGGCCACGATGCTTATTATGGATTTTA
 TTATAGCAGCTGGGAGAGTGGCTTCTTCGGCTTTTCTTAATGCACCAAGAGTGAAGACACAAGTTCTTCT
 GGGATCTTTAGTTTGGCTTCCCACTTATATTGTGAATTGCCTGCTCTCCATCCCAACATTCCTGATATT
 GCTGTGCTCAATTTACAGATGTTAAGGAACTTATAATTAAGCTCGGCAAGAGATGAGC
 CCTCTGGTCTGCACGATGTGTAGCACTTTGCAGTTTAGGATTTTGGATTTGGAAGAATTAGTCCACGA
 ATCTCATCATCTCAAATTAAGAAGCACTGAATGTAATTTGTGTTTCATTAAGTTTACTAATAAAAA
 GTTGCCACGTCGCTGTAACATGCTTCACATGCTGGTCACTATGTCCCTAGACTTCAGATTACCACGC
 CGCAGTCTCCCTGAAAATTTATCAGATCTAATAGCAACTATCACCCACCTTTTGCCAAGTACAGAAGC
 TTCATCATATGAAATGGACAAGAGTTGGTTGTCTCATTACTTTTGCCTTCTGGACTGGATCATGGCC
 TTACCTTTAAAGACACTGCTCCAACAGTCCATGCTACAGGAGCAGAAAATGATAAGACCGAAAAGTCTG
 TTCTCAACTGCATTTATAAGGATTACATGGGTGTGCTATGGAGCGCAAAGTTTTAGCAATCCCAAGTA
 CTTTCCAATAAGCCTTTCTGATTTGGCATCTGTAGATTATGATCCGTTTATGCATTTGAAAAGTCTGAAA
 GAACCTGAACCTTTACACTCTCCAGATTAGAGCGGTCTTCTAACTGCAGCCTGTGACAGAAGTAAAA
 CTCAGATGCAACAAGGATTAATCTATAGCAGCCGTAAGTATTACCCATCTGGTGAATCACTTGGG
 CCATTATCCAATGAGTGGTGGTCTGCTATGCTAACAAGTCAAGTGTGAAAATCATGACAATCATTAC
 AGTGAAGTACTGAACCTTCTCCTGAGCTTTTGAAGTCAAACATCCAGTTCTTTGTGCTGAATAATA
 CAACCTTAGTGTCTGTATCCAGATAAGATCGGAAGAGATATGCCTGGAGGAGTCTAGCTGCTGGCCT
 TGTGTGACCAACTCAAATGTTAGAATCATAGTACGTGATCTCTGGAAGTACTCATGGGATTCGCC
 ATACTGTATGGACCACCAATTGTAAGTGGTTTGCCTGAACCTACATCTTTCATACTTTCAATGTCTGACC
 AAGAGAAACCGGAAGAGCCTCTACATCTAACGAATGCTTAGAAGACATCGCAGTAAAAGATGGGCTTTC
 TCTCCAGCTTAGAAGATTTAGAGAACTGTACCAACTTGGTCTACGATACGAGAGGAAGAAGATGTTCTT
 GACGAGCTCTGCAGTATTTAGGCACTACAAGTCTGAGTGTTCACAGAGAACGGGAATCTCCCTCAATG

TTCTGCTCCACAGCCTCTGTGCATTTCTGAAAAACAGGAGAATGATGTCATTAATGCTATCCTTAAGCA
ATACACGGAAGAAAAAGAGTTTGTAGAGAAGCACTTTAATGACTTAAACATGAAAGCCTCAGAACAAGAT
GAGCCAACACCTCAGAAACCTCAGTCAGCTTTTTATTACTGCAGATTGCTTCTTAGTATATTGGGAATGA
ATTCTGGGACAAACGGAGGAGCTTTCATCTCTTGAAGAAAAATGAAAAGCTGCTCAGAGAACTTAGGAA
CTTGGATTCAAGGCAATGCCGAGAGACACACAAGATTGCAGTATTTACGTTGCTGAAGGACAAGAAGAT
AAATACTCCATTCTACCAATATAGGAGGAAGCCAAGCATATGAAGATTTTGTAGCTGGCCTTGGTTGGG
AGGTAACCTTACAACCCTGTGGCTTCATGGGAGGCCTTCAGAAGAACAGAAGCACTGGACTGACCAC
TCCCTATTTTGTACCTCGACAGTAGAAGTAATTTTCATGTATCTACACGAATGCCTTCTGATTCTGAT
GACTCTTGACCAAAAAATTGAGACATCTAGGAAATGATGAAGTGACATTGTTTGGTCAGAACATACTA
GAGACTACAGGAGAGGAATTATTCCTACTGAGTTTGGTGTATGTCCTCATTGTAATATACCAATGAAAA
CCACATGTTTCAGTATCCAGATCATGAAAAACCAGAGGTTCCCTTCTTTGGTCCACTTTTTGATGGTGCT
ATTGTGAATGAAAAAGTTCTGCCATTATGGTTTCGATCCACAGCAATAAATGCTAGCCGTGCTCTGAAAT
CACTGATTCCATTGTATCAAAATTTCTATGAGGAGAGACACGGTACCTGCAGACAATTGTCCAGCACCA
TTTAGAGCCAACAACATTTGAAGACTTTGCAGCACAGTTTTCTCTCCAGCTCCCTACCATCATTTCCCT
GCTGACGCAGTTGGATCCTACCCAGAGATTCCACCCAGTGACGCTGCCCCAGCAGCACAGGTAGACGGGG
CTGACCTGGCCTCTCCATGTCTCTCGAACTAGCAAAAGCCGCATGTCCATGAAGCTGCGTCGGTCTC
TGGCTCAGCCAATAAATCC

ACGCGTACGCGGCCGCTCGAG – GFP Tag – GTTTAA

Protein Sequence: >MG220421 representing NM_001003719
 Red=Cloning site Green=Tags(s)

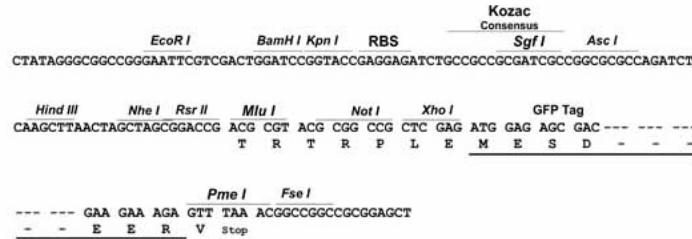
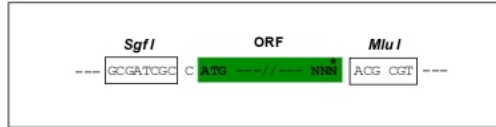
```
MFSKPKPHGDVKKSTQKVLDTKKDALTRLKHLRIVENAESIDLKQFFDQHFHSHIYVVFENFVTIEASLK
QKGHKSQRELDAILFIFEKILQLLPERIHQRWQFHSIGLILKLLHTGNLTKIRREGVRLFLWLQALQ
DNCSKEQLWMFSLIPGFSAPQSEYGPRTLNDL INPPLSLQETQVTIEEVTPLVPPQSGDKGQEDLTSYF
LEALLKYIVIQVKSLEWKNKENQERGFSLF SHFKKFFLYPIFPNICKENSLYHPVLDIPQIRPKPHYVM
IKKDAETNETIYCTKEPFIQARVIVIRWLVSFWLEPKPHSGPNIPGMEGEVLPKNIQRAAASLVSREESK
NDTVDKVDKSAEPEQSHSNTSTLTEREPSSSSLCSIDEEHLTDIEIVRRVFSKRSNVNFVTEIFRQAF
LPICEAAAMRKVVYVYQEWIQEKEKPLFMQEPEDTAITCSDIPCSETVADHDSAIEDGEKREEENGSTSTS
EHRVNSSWTKNGSYQEAHFVCEEATEQNIQAGTQAVLQVFIINSSNIFLLEPANEIKNLLDEHTDMCKRI
LNIYRYMVVQVSMDDKTWEQMLLVLLRVTESVLKMSQAFLQFQGGKSMTLAAGLPLFQTLIVAWIKA
NLNVYISRELWDDL SVLSSLTYWEELATEWSLTMETLTKVLARNLYSLDLSDLPLDKLSEKQKQKHKGK
GVGHEFQKVSVDKFSRGSWRDQPGQAPMRQRSATTTGSPGTEKARSIVRQKTVDIDDAQILPRSTRVRH
FSQSEDTGNEVFGALHEEQPLPRSSSTSDILEPFTVERAKVNKEDTSPKLPPLNSETGGNSANVPDLME
FIAERLRSNGASTMTRRGSPPGSLIIPKDLPDILNKQNPVDDPGVPSSEWTPASAGSSDLMSDSSHS
DSFSAFQCEGRKFDNFVGTGDIIPSSADVDLGSQGHQSTEEQEVASLTLHLHLDSETSSLNQAFSAEVA
TVTGSSEASPVHSALGSRSQTPSPSTLSRAHIEQKDLQLDEKLHHSVLQTPDDLEISEFPSECCSVMAGG
TLTGWHADVATVMWRMLGILGDVNAIMDPEIHAQVFDYLCELWQNLAKIRDNLGISADNLTSPSPVLI
PPLRILTPWLFKATMLTDKYKQKGLHAYKLCNTMKRRQDVSPNRDFLTHFYINIMHGCLLHIDQDIVNTI
IKHCSPQFFSLGLPGATMLIMDFIIAAGRVASSAFLNAPRVEAQVLLGSLVCFPNLYCELPAHPNIPDI
AVSQFTDVKELIIKTVLSSARDEPSGPARCVLCSLGIWICEELVHESHHPQIKEALNVICVSLKFTNKT
VAHVACNMLHMLVHYVPRQLIHQPQSPKIIQIL IATITHLLPSTEASSYEMDKRLVVSLLLCLLDWIMA
LPLKTLQLQPVHATGAENDKTEKSVLNCIYKVLHGCVYGAQSFSPKYPFISLSDLASVDYDFPMHLESK
EPEPLHSPDSERSKLPVTEVKTQMQQGLISIAARTVITHLVNHLGHYPMSGGPAMLT SQVCENHDNHY
SESTELSPELFESPNIQFFVLNNTTLVSCIQIRSEESMPGGGLAAGLVSANSNVRIIVRDLSGKYSWDSA
ILYGPPIVSGLPEPTSFILSMSDQEKPEEPPTSNECLEIAVKDGLSLQLRRFRETVPWTSTIREEDVL
DELLQYLGTTSPECLQRTGISLNVPAQPLCISEKQENDVINAILKQYTEEKEFVEKHFNDLNMKASEQD
EPTPQKQSAFYCRLLLSILGMNSWDKRRSFHLLKKNKLLRELRLNDSRQCRETHKIAVFVYVYAEQED
KYSILTNIGGSQAYEDFVAGLGWEVNL TNHCGFMGGLQKNRSTGLTTPYFATSTVEVIFHVSTRMPDSD
DSLTKKLRHLGNDEVHIVWSEHTRDYRRGIIPTEFGDVLIVIYPMKNHMF SIQIMKKPEVPPFFGPLFDGA
IVNGKVLPIMVRSTAINASRALSLIPL YQNFYEERARYLQTI VQHHPLEPTTFEDFAAQVFPSPAYHHFP
ADAVGSYPEIPPSDAAPAAQVDGADLASPMSPTSKSRMSMKLRRSSGSANKS
```

TRTRPLE - GFP Tag - V

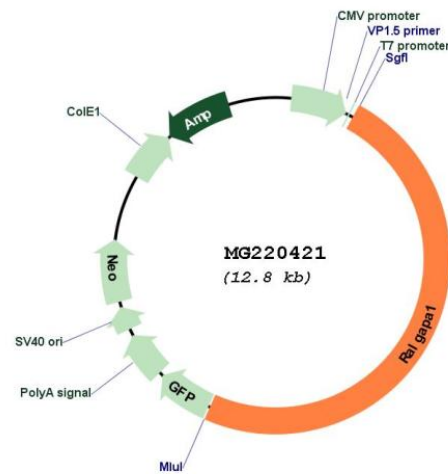
Restriction Sites: Sgfl-MluI

Cloning Scheme:

Cloning sites used for ORF Shutting:



Plasmid Map:



ACCN: NM_001003719
 ORF Size: 6249 bp

OTI Disclaimer:	<p>Due to the inherent nature of this plasmid, standard methods to replicate additional amounts of DNA in E. coli are highly likely to result in mutations and/or rearrangements. Therefore, OriGene does not guarantee the capability to replicate this plasmid DNA. Additional amounts of DNA can be purchased from OriGene with batch-specific, full-sequence verification at a reduced cost. Please contact our customer care team at custsupport@origene.com or by calling 301.340.3188 option 3 for pricing and delivery.</p> <p>The molecular sequence of this clone aligns with the gene accession number as a point of reference only. However, individual transcript sequences of the same gene can differ through naturally occurring variations (e.g. polymorphisms), each with its own valid existence. This clone is substantially in agreement with the reference, but a complete review of all prevailing variants is recommended prior to use. More info</p>
OTI Annotation:	This clone was engineered to express the complete ORF with an expression tag. Expression varies depending on the nature of the gene.
Components:	The ORF clone is ion-exchange column purified and shipped in a 2D barcoded Matrix tube containing 10ug of transfection-ready, dried plasmid DNA (reconstitute with 100 ul of water).
Reconstitution Method:	<ol style="list-style-type: none"> 1. Centrifuge at 5,000xg for 5min. 2. Carefully open the tube and add 100ul of sterile water to dissolve the DNA. 3. Close the tube and incubate for 10 minutes at room temperature. 4. Briefly vortex the tube and then do a quick spin (less than 5000xg) to concentrate the liquid at the bottom. 5. Store the suspended plasmid at -20°C. The DNA is stable for at least one year from date of shipping when stored at -20°C.
RefSeq:	NM_001003719.2 , NP_001003719.1
RefSeq Size:	7891 bp
RefSeq ORF:	6252 bp
Locus ID:	56784
UniProt ID:	Q6GYP7
Cytogenetics:	12 C1
Gene Summary:	Catalytic subunit of the heterodimeric RalGAP1 complex which acts as a GTPase activator for the Ras-like small GTPases RALA and RALB (By similarity). May interact with the HLH region of TCF3/isoform E12.[UniProtKB/Swiss-Prot Function]