

Product datasheet for **MG220401**

Cdc26 (NM_139291) Mouse Tagged ORF Clone

Product data:

Product Type: Expression Plasmids
Product Name: Cdc26 (NM_139291) Mouse Tagged ORF Clone
Tag: TurboGFP
Symbol: Cdc26
Synonyms: 2010012C09Rik
Mammalian Cell Selection: Neomycin
Vector: pCMV6-AC-GFP (PS100010)
E. coli Selection: Ampicillin (100 ug/mL)
ORF Nucleotide Sequence: >MG220401 representing NM_139291
 Red=Cloning site Blue=ORF Green=Tags(s)

TTTTGTAATACGACTCACTATAGGGCGCCGGAATTCGTCGACTGGATCCGGTACCGAGGAGATCTGCC
 GCC**CGATCGCC**

ATGCTGCGACGGAAACCGACCCGCTTAGAGCTCAAGCTCGACGACATTGAGGAGTTTGAGAGCATTTCGCA
 AGGACCTGGAGGCCCGTAAGAAGCAGAAGGAAGATGTGGAAGGTGTAGGAACCAGCGATGGAGAAGGAGC
 TGCTGGGCTCAGCAGTGACCCAAAAGCCGGGAACAAATGATTAATGATCGAATTGGTTATAAACCCCAA
 CTAAGAGCAACAACCGCACATCTCAGTTGGAACTTTGAATT

ACGCGTACGCGGCCGCTCGAG - GFP Tag - GTTTAA

Protein Sequence: >MG220401 representing NM_139291
 Red=Cloning site Green=Tags(s)
 MLRRKPTRLELKLDDIEEFESIRKDLARKKQKEDVEGVGTSDEGAAGLSSDPKSREQMINDRIGYKPQ
 LKSNRRTSQGNFEF

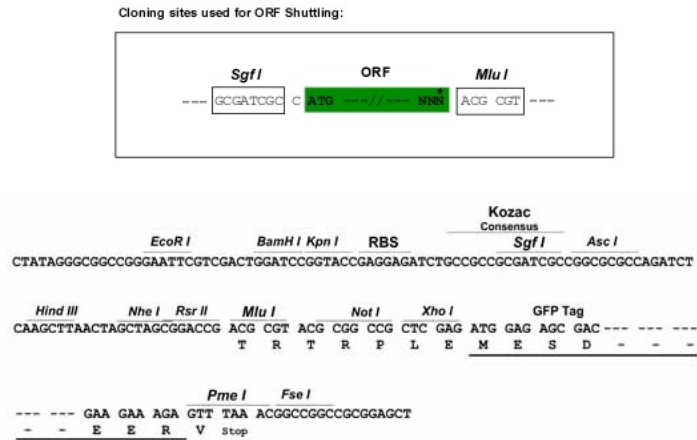
TRTRPLE - GFP Tag - V

Restriction Sites: Sgfl-MluI

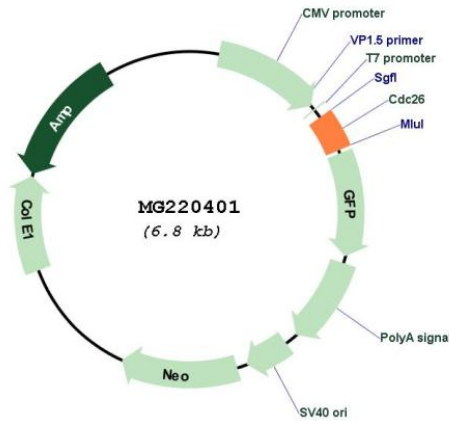


[View online »](#)

Cloning Scheme:



Plasmid Map:



ACCN: NM_139291

ORF Size: 255 bp

OTI Disclaimer:

The molecular sequence of this clone aligns with the gene accession number as a point of reference only. However, individual transcript sequences of the same gene can differ through naturally occurring variations (e.g. polymorphisms), each with its own valid existence. This clone is substantially in agreement with the reference, but a complete review of all prevailing variants is recommended prior to use. [More info](#)

OTI Annotation:	This clone was engineered to express the complete ORF with an expression tag. Expression varies depending on the nature of the gene.
Components:	The ORF clone is ion-exchange column purified and shipped in a 2D barcoded Matrix tube containing 10ug of transfection-ready, dried plasmid DNA (reconstitute with 100 ul of water).
Reconstitution Method:	<ol style="list-style-type: none">1. Centrifuge at 5,000xg for 5min.2. Carefully open the tube and add 100ul of sterile water to dissolve the DNA.3. Close the tube and incubate for 10 minutes at room temperature.4. Briefly vortex the tube and then do a quick spin (less than 5000xg) to concentrate the liquid at the bottom.5. Store the suspended plasmid at -20°C. The DNA is stable for at least one year from date of shipping when stored at -20°C.
RefSeq:	NM_139291.4
RefSeq Size:	794 bp
RefSeq ORF:	258 bp
Locus ID:	66440
UniProt ID:	Q99JP4
Cytogenetics:	4 B3
Gene Summary:	Component of the anaphase promoting complex/cyclosome (APC/C), a cell cycle-regulated E3 ubiquitin ligase that controls progression through mitosis and the G1 phase of the cell cycle. The APC/C complex acts by mediating ubiquitination and subsequent degradation of target proteins: it mainly mediates the formation of 'Lys-11'-linked polyubiquitin chains and, to a lower extent, the formation of 'Lys-48'- and 'Lys-63'-linked polyubiquitin chains. May recruit the E2 ubiquitin-conjugating enzymes to the complex (By similarity).[UniProtKB/Swiss-Prot Function]