

Product datasheet for **MG220349**

Creld2 (NM_029720) Mouse Tagged ORF Clone

Product data:

Product Type: Expression Plasmids
Product Name: Creld2 (NM_029720) Mouse Tagged ORF Clone
Tag: TurboGFP
Symbol: Creld2
Synonyms: 5730592L21Rik; C85758
Mammalian Cell Selection: Neomycin
Vector: pCMV6-AC-GFP (PS100010)
E. coli Selection: Ampicillin (100 ug/mL)
ORF Nucleotide Sequence: >MG220349 representing NM_029720
 Red=Cloning site Blue=ORF Green=Tags(s)

TTTTGTAATACGACTCACTATAGGGCGGCCGGAATTCGTCGACTGGATCCGGTACCGAGGAGATCTGCC
 GCC**CGATCGCC**

ATGCACCTGCTGCTTGCAGCCGCGTTTCGGGCTGCTGCTGCTGCCGCCGCCGGGGCCGTAGCCTCCC
 GGAAGCCGACGATGTGCCAGAGATGCCGGACGCTGGTGGACAAGTTCAACCAGGGGATGGCCAACACGGC
 CAGGAAGAATTCGGTGGCGGCAACACGGCGTGGGAAGAGAAGACGCTGTCTAAGTACGAATTCAGTGAG
 ATCCGGCTTCTGGAGATCATGGAGGTCTGTGTGACAGCAGTGACTTTGAGTGCAACCAACTCTTGAGC
 AGCAGGAGGAGCAGCTAGAGGCTTGGTGGCAGACACTGAAGAAGGAGCACCCCAACCTATTTGAGTGGTT
 CTGTGTACACACACTGAAAGCGTGTCTTCCAGGCACCTACGGGCCAGACTGTCAAGAGTGCCAGGGT
 GGGTCCGAGAGGCCTTGCAGCGGAAACGGCTATTGCAGCGGAGACGGCAGCAGACAGGGCGATGGGTCTT
 GCCAGTGTACACAGGCTACAAGGGACCACTGTGTATTGACTGCACAGACGGCTTCTTACAGTTGCAGAG
 GAACGAGACCCACAGCATCTGCTCAGCCTGTGATGAGTCTTGAAGACCTGCTCTGGTCCAAGCAACAAA
 GACTGTATCCAGTGTGAAGTGGGCTGGGCACGTGTGGAGGATGCCTGTGTGGATGTGGATGAGTGTGCAG
 CAGAGACATCTCCGTGCAGCGATGGCCAGTACTGTGAGAATGTCAACGGCTCGTACACATGTGAAGACTG
 TGATTCTACCTGCGTGGGCTGTACAGGAAAAGGCCAGCCAAGTGAAGGAGTGTATTGCCGGCTACACC
 AAGGAGAGTGGACAGTGCACAGATATAGATGAATGCTCACTAGAAGAAAAGCCTGAAGAGGAAAAACG
 AAAACTGCTACAATGTTCCGGGGAGCTTCGTGTGCGTGTGCCGGAAGGCTTTGAGGAGACAGAAGACGC
 TTGTGTGCAGACAGCAGAAGGCAAAGTACAGAGGAAAACCCACACAGCCACCCTCCCGTGAGGATTTG

ACGCGTACGCGGCCGCTCGAG - GFP Tag - GTTTAA



[View online »](#)

Protein Sequence: >MG220349 representing NM_029720
 Red=Cloning site Green=Tags(s)

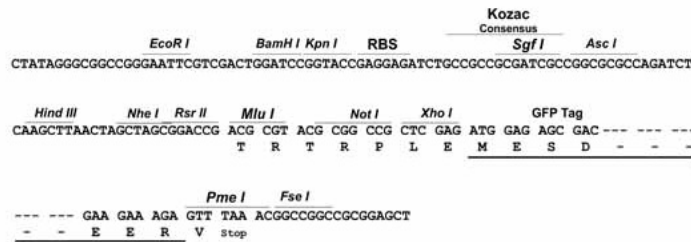
MHLLAAAFGLLLLLPPPGAVASRKPTMCQRCRTLVDKFNQGMANTARKNFGGGNTAWEKTL SKYEFSE
 IRLLEIMEGLCDSSDFECNQLLEQQEEQLEAWWQTLKKEHPNLFWFVCVHTLKACCLPGTYGPDCECQG
 GSERPCSGNGYCSGDGSRQDGGSCQCHTG YKGPLCIDCTDGFSLQRNETHSICSACDESKTCSGSPSNK
 DCIQCEVGWARVEDACVDVDECAAETSPCSDGQYCEVNGSYTCEDCDSTCVGCTGKGPANCKECIAGYT
 KESGQCTDIDEC SLEEKACKRKNENCYNVPGSFVVCVPEGFEEEDACVQTAEKVTEENPTQPPSREDL

TRTRPLE - GFP Tag - V

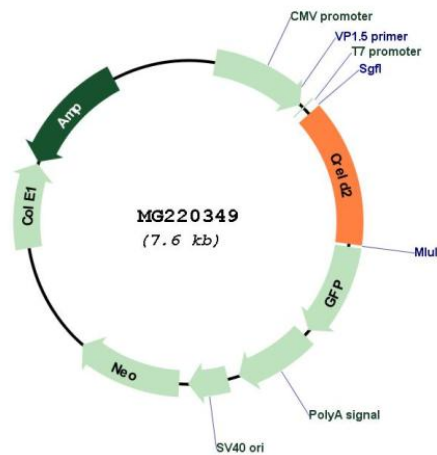
Restriction Sites: SgfI-MluI

Cloning Scheme:

Cloning sites used for ORF Shuttling:



Plasmid Map:



ACCN: NM_029720

ORF Size: 1050 bp

OTI Disclaimer:	The molecular sequence of this clone aligns with the gene accession number as a point of reference only. However, individual transcript sequences of the same gene can differ through naturally occurring variations (e.g. polymorphisms), each with its own valid existence. This clone is substantially in agreement with the reference, but a complete review of all prevailing variants is recommended prior to use. More info
OTI Annotation:	This clone was engineered to express the complete ORF with an expression tag. Expression varies depending on the nature of the gene.
Components:	The ORF clone is ion-exchange column purified and shipped in a 2D barcoded Matrix tube containing 10ug of transfection-ready, dried plasmid DNA (reconstitute with 100 ul of water).
Reconstitution Method:	<ol style="list-style-type: none">1. Centrifuge at 5,000xg for 5min.2. Carefully open the tube and add 100ul of sterile water to dissolve the DNA.3. Close the tube and incubate for 10 minutes at room temperature.4. Briefly vortex the tube and then do a quick spin (less than 5000xg) to concentrate the liquid at the bottom.5. Store the suspended plasmid at -20°C. The DNA is stable for at least one year from date of shipping when stored at -20°C.
RefSeq:	NM_029720.2 , NP_083996.1
RefSeq Size:	1364 bp
RefSeq ORF:	1053 bp
Locus ID:	76737
UniProt ID:	Q9CYA0
Cytogenetics:	15 E3
Gene Summary:	May regulate transport of alpha4-beta2 neuronal acetylcholine receptor.[UniProtKB/Swiss-Prot Function]