

Product datasheet for **MG220324**

Tas2r139 (NM_181275) Mouse Tagged ORF Clone

Product data:

Product Type:	Expression Plasmids
Product Name:	Tas2r139 (NM_181275) Mouse Tagged ORF Clone
Tag:	TurboGFP
Symbol:	Tas2r139
Synonyms:	mt2r34; Tas2r39
Mammalian Cell Selection:	Neomycin
Vector:	pCMV6-AC-GFP (PS100010)
E. coli Selection:	Ampicillin (100 ug/mL)
ORF Nucleotide Sequence:	>MG220324 representing NM_181275 Red=Cloning site Blue=ORF Green=Tags(s)

TTTTGTAATACGACTCACTATAGGGCGGCCGGAATTCGTCGACTGGATCCGGTACCGAGGAGATCTGCC
GCC**CGATCGCC**

ATGGCTCAACCCAGCAACTACTGGAAACAAGATGTGCTACCATTGTCTATTTTGATGTTAACACTTGTGG
CCACTGAGTGCACCATAGGTATCATTGCAAGTGGGATTGTCATGGCTGTGAATGCAGTCTCATGGGTTCA
GAAAAAGGCAATTTCCATAACTACTAGGATTCTGCTTCTCTGAGTGTATCCAGAATAGGCCCTCAAAGC
ATCATGTTGATAGAAATTACCTCCTCCATATTCAACGTTGCTTTTACAACAGTGTATATATAGAGTCT
CAATGTAAGTTTTGTATTCTTAAATTATGTAGTCTCTGGTTTGCTGCTTTGCTTAGTTTCTTCCACTT
TGTGAAGATTGCCAATTTTCTTACCCCTGTTCTTCAAATAAAGTGGAGAATTTCTGAATTAATGCC
TGGCTTCTGTGGCTCTCAGTGTTATTTTCTTCCAGCTCCAGCATGTTCTTCCAGCAAGCACAAAGTTCACTG
TGAACAACAACAATTCTCTAAGTAACAACATCTGCAACTTCACAATGAACTTTACGTTGTTGAGACCAA
TGTGGTCAATGTGCTTTTTTATTCATTTCCGGAACTACTCCCTCCTTTGACAATGTTTCGTCGCAACAGCT
ACTCTTCTGATTTTTTCTCTCAGGAGACACACCCTGAACATGAGAAACAGTGCCACTGGCTCCAGAAACC
CCTGCATAGAGGCTCATATGCAGGCCATCAAAGAACTAGCTGTTTTCTTTCTCTACATTTTAAATGC
AGCTGCTCTGCTTCTGTCCACATCCAACATAGTCGATGCTAGTCTCTTCTGGAGTATTGTGATCAGAATT
GTTCTGCCTGTCTACCCAGCTGGCCATTCAGTTTTACTAATTGAGAACAACCCCTGGATTAAGAAGAACAT
GGAAGCATCTTCAGTCTCAAATTCATTTGACTTACAAAATAGATTTC

ACGCGTACGCGGCCGCTCGAG - GFP Tag - GTTTAA



[View online »](#)

Protein Sequence: >MG220324 representing NM_181275
 Red=Cloning site Green=Tags(s)

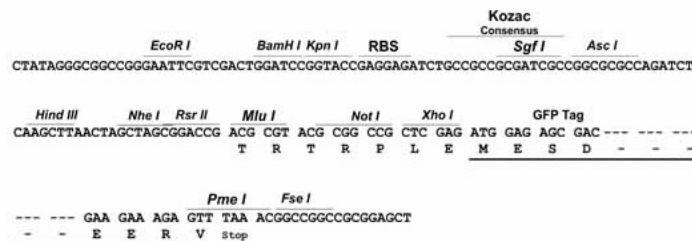
MAQPSNYWKQDVLPLSILMLTLVATECTIGIIASGIVMAVNAVSVWQKKAISITTRILLLSVSRIGLQS
 IMLIEITSSIFNVAFYNSVLYRVSNSVFLNYCSLWFAALLSFFHFVKIANFSYPLFFKLKWRISLMP
 WLLWLSVVISFSSSMFFSKHKFTVNNNSLSNNICNFTMKLYVETNVVNSFLFISGILPPLTMFVATA
 TLLIFSLRRHTLNMRNSATGSRNPCIEAHMQAIKETSCFLFLYLILNAAALLLSTSNIVDASLFWISIVIRI
 VLPVYPAGHSVLLIQNNPGLRRTWKHLQSQIHLYLQNR

TRTRPLE - GFP Tag - V

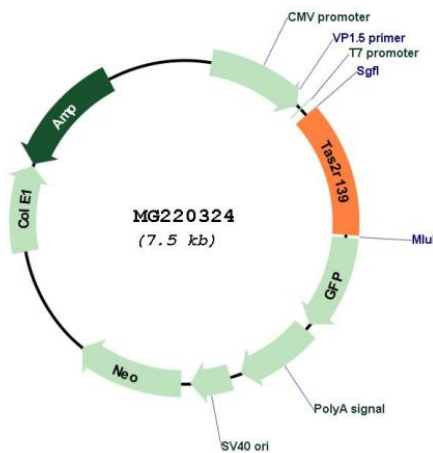
Restriction Sites: SgfI-MluI

Cloning Scheme:

Cloning sites used for ORF Shuttling:



Plasmid Map:



ACCN: NM_181275

ORF Size: 957 bp

OTI Disclaimer:	The molecular sequence of this clone aligns with the gene accession number as a point of reference only. However, individual transcript sequences of the same gene can differ through naturally occurring variations (e.g. polymorphisms), each with its own valid existence. This clone is substantially in agreement with the reference, but a complete review of all prevailing variants is recommended prior to use. More info
OTI Annotation:	This clone was engineered to express the complete ORF with an expression tag. Expression varies depending on the nature of the gene.
Components:	The ORF clone is ion-exchange column purified and shipped in a 2D barcoded Matrix tube containing 10ug of transfection-ready, dried plasmid DNA (reconstitute with 100 ul of water).
Reconstitution Method:	<ol style="list-style-type: none">1. Centrifuge at 5,000xg for 5min.2. Carefully open the tube and add 100ul of sterile water to dissolve the DNA.3. Close the tube and incubate for 10 minutes at room temperature.4. Briefly vortex the tube and then do a quick spin (less than 5000xg) to concentrate the liquid at the bottom.5. Store the suspended plasmid at -20°C. The DNA is stable for at least one year from date of shipping when stored at -20°C.
RefSeq:	NM_181275.1 , NP_851792.1
RefSeq Size:	960 bp
RefSeq ORF:	960 bp
Locus ID:	353148
UniProt ID:	Q7TQA5
Cytogenetics:	6 B2.1
Gene Summary:	Putative taste receptor which may play a role in the perception of bitterness. [UniProtKB/Swiss-Prot Function]