

Product datasheet for **MG220285**

Pam16 (NM_025571) Mouse Tagged ORF Clone

Product data:

Product Type: Expression Plasmids
Product Name: Pam16 (NM_025571) Mouse Tagged ORF Clone
Tag: TurboGFP
Symbol: Pam16
Synonyms: 2010110I09Rik; AV006767; CGI-136; Magmas; Tim16; Timm16
Mammalian Cell Selection: Neomycin
Vector: pCMV6-AC-GFP (PS100010)
E. coli Selection: Ampicillin (100 ug/mL)
ORF Nucleotide Sequence: >MG220285 representing NM_025571
Red=Cloning site Blue=ORF Green=Tags(s)

TTTTGTAAACGACTCACTATAGGGCGGCCGGAATTCGTCGACTGGATCCGGTACCGAGGAGATCTGCC
 GCCCGATCGCC

ATGGCCAAGTACCTGGCCAGATCATTGTGATGGGTGTGCAGGTGGTGGGCAGAGCCTTTGCCAGGGCCC
TGAGGCAGGAGTTTGCAGCCAGCCAGGCAGCCGCTGACGCTCGAGGGCGTGCTGGGCACCACTCTGCAGC
TGCATCCAATCTCTTGGCCTCAGCCTCCAGGAAGCCAGCAGATTCTCAACGCTCCAAGCTGAGCCCC
GAGGAGGTCCAGAAGAATTATGAACACCTATTTAAAGTGAATGATAAGTCCGTGGGTGGCTTTCTACC
TGCAGTCAAAGTTGTCCGTGCAAAGGAACGTCTAGATGAGGAACTCCGAATACAAGCCAGGAAGACAG
AGAGAAAGGGCAGAAGCCAAAACG

ACGCGTACGCGGCCGCTCGAG - GFP Tag - GTTTAA

Protein Sequence: >MG220285 representing NM_025571
Red=Cloning site Green=Tags(s)

MAKYLAQIIVMGVQVVGRAFARALRQEFAASQAADARGRAGHQSAASNLSGLSLQEAQQILNVSKLSP
 EEVQKNYEHLFKVNDKSVGGSFYLSQSKVVRAKERLDEELRIQAQEDREKGQKPKT

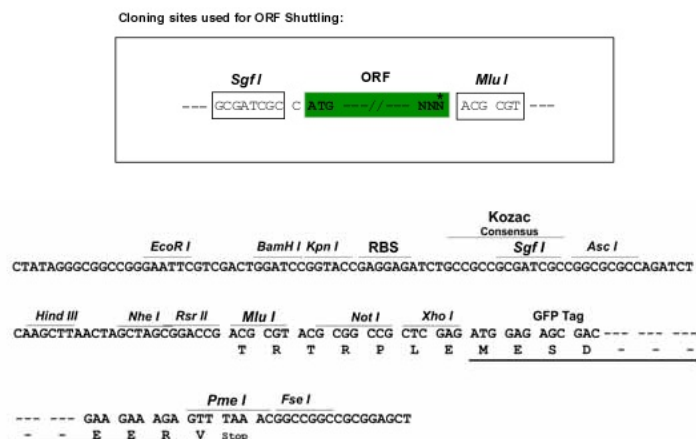
TRTRPLE - GFP Tag - V

Restriction Sites: SgfI-MluI

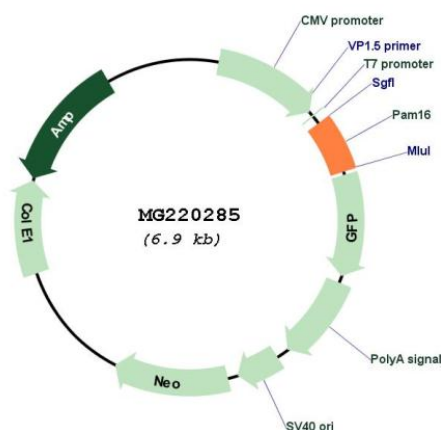


[View online »](#)

Cloning Scheme:



Plasmid Map:



ACCN: NM 025571

ORF Size: 375 bp

OTI Disclaimer: The molecular sequence of this clone aligns with the gene accession number as a point of reference only. However, individual transcript sequences of the same gene can differ through naturally occurring variations (e.g. polymorphisms), each with its own valid existence. This clone is substantially in agreement with the reference, but a complete review of all prevailing variants is recommended prior to use. [More info](#)

OTI Annotation:	This clone was engineered to express the complete ORF with an expression tag. Expression varies depending on the nature of the gene.
Components:	The ORF clone is ion-exchange column purified and shipped in a 2D barcoded Matrix tube containing 10ug of transfection-ready, dried plasmid DNA (reconstitute with 100 ul of water).
Reconstitution Method:	<ol style="list-style-type: none"> 1. Centrifuge at 5,000xg for 5min. 2. Carefully open the tube and add 100ul of sterile water to dissolve the DNA. 3. Close the tube and incubate for 10 minutes at room temperature. 4. Briefly vortex the tube and then do a quick spin (less than 5000xg) to concentrate the liquid at the bottom. 5. Store the suspended plasmid at -20°C. The DNA is stable for at least one year from date of shipping when stored at -20°C.
RefSeq:	NM_025571.1 , NP_079847.1
RefSeq Size:	552 bp
RefSeq ORF:	378 bp
Locus ID:	66449
UniProt ID:	Q9CQV1
Cytogenetics:	16 2.45 cM
Gene Summary:	Regulates ATP-dependent protein translocation into the mitochondrial matrix. Inhibits DNAJC19 stimulation of HSPA9/Mortalin ATPase activity (By similarity).[UniProtKB/Swiss-Prot Function]