

## Product datasheet for **MG220252**

### Gnrhr (NM\_010323) Mouse Tagged ORF Clone

#### Product data:

Product Type:	Expression Plasmids
Product Name:	Gnrhr (NM_010323) Mouse Tagged ORF Clone
Tag:	TurboGFP
Symbol:	Gnrhr
Mammalian Cell Selection:	Neomycin
Vector:	pCMV6-AC-GFP (PS100010)
E. coli Selection:	Ampicillin (100 ug/mL)
ORF Nucleotide Sequence:	>MG220252 representing NM_010323 Red=Cloning site Blue=ORF Green=Tags(s)

TTTTGTAATACGACTCACTATAGGGCGGCCGGAATTCGTCGACTGGATCCGGTACCGAGGAGATCTGCC  
GCC**CGATCGCC**

ATGGCTAACAATGCATCTCTTGAGCAGGACCCAAATCACTGCTCGGCCATCAACAACAGCATCCCCTTGA  
TACAGGGCAAGCTCCCGACTCTAACCGTATCTGGAAAGATCCGAGTGACCGTGACTTTCTCCTTTTCT  
ACTCTCTACTGCCTTCAATGCTTCCTTCTGTTGAAGCTGCAGAAGTGGACTCAGAAGAGGAAGAAAGGA  
AAAAAGCTCTCAAGGATGAAGGTGCTTTTAAAGCATTTGACCTTAGCCAACCTGCTGGAGACTCTGATCG  
TCATGCCACTGGATGGGATGTGGAATATTACTGTTCAAGTGGTATGCTGGGAGTTCTCTGCAAAGTTCT  
CAGCTATCTGAAGCTCTTCTCTATGTATGCCCCAGCTTTTCATGATGGTGGTGATTAGCCTGGACCGCTCC  
CTGGCCATCACTCAGCCCCTTGCTGTACAAGCAACAGCAAGCTTGAACAGTCTATGATCAGCCTGGCCT  
GGATTCTCAGCATTGTCTTTGCAGGACCACAGTTATATATCTTCAGGATGATCTACCTAGCAGACGGCTC  
TGGGCCACAGTCTTCTCGCAATGTGTGACCCACTGCAGCTTCCACAGTGGTGGCATCAGGCCCTCTAC  
AACTTTTTACCTTCGGCTGCCTCTTCATCATCCCCCTCCTCATGCTAATCTGCAATGCCAAAATCA  
TCTTTGCTCTCACGCGAGTCCTTCAAGACCCACGCAACTACAGCTGAATCAGTCCAAGAATAATAT  
CCCAAGAGCTCGGCTGAGAACGCTAAAGATGACAGTCGCATTGCTACCTCTTTGTCGCTGCTGGACT  
CCCTACTATGTCCTAGGCATTTGGTACTGTTTATCCAGAAATGTTGAACAGGGTGTGAGGCCAGTGA  
ATCACTTTTTCTTCTTTGCTTTCCTAAACCGTGCTTCGACCCACTCATATATGGGTATTTCTCTTT  
G

**ACGCGT**ACGCGGCCGCTCGAG - GFP Tag - GTTTAA



[View online »](#)

**Protein Sequence:** >MG220252 representing NM\_010323  
Red=Cloning site Green=Tags(s)

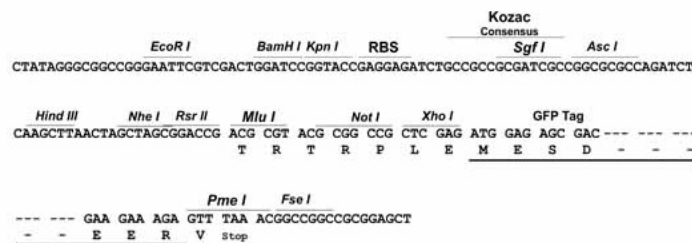
MANNASLEQDPNHCSAINNSIPLIQGKLP LTVSGKIRVTVTFFLFLSTAFNASFLLKLQKWTQKRKKG  
 KKL SRMKVLLKHLTLANLLET L I V M P L D G M W N I T V Q W Y A G E F L C K V L S Y L K L F S M Y A P A F M M V V I S L D R S  
 L A I T Q P L A V Q S N S K L E Q S M I S L A W I L S I V F A G P Q L Y I F R M I Y L A D G S G P T V F S Q C V T H C S F P Q W W H Q A F Y  
 N F F T F G C L F I I P L L I M L I C N A K I I F A L T R V L H Q D P R K L Q L N Q S K N N I P R A R L R T L K M T V A F A T S F V V C W T  
 P Y Y V L G I W Y W F D P E M L N R V S E P V N H F F L F A F L N P C F D P L I Y G Y F S L

TRTRPLE - GFP Tag - V

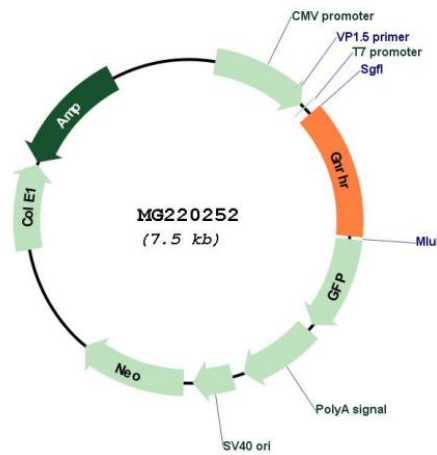
**Restriction Sites:** SgfI-MluI

**Cloning Scheme:**

Cloning sites used for ORF Shutting:



**Plasmid Map:**



**ACCN:** NM\_010323

**ORF Size:** 981 bp

<b>OTI Disclaimer:</b>	The molecular sequence of this clone aligns with the gene accession number as a point of reference only. However, individual transcript sequences of the same gene can differ through naturally occurring variations (e.g. polymorphisms), each with its own valid existence. This clone is substantially in agreement with the reference, but a complete review of all prevailing variants is recommended prior to use. <a href="#">More info</a>
<b>OTI Annotation:</b>	This clone was engineered to express the complete ORF with an expression tag. Expression varies depending on the nature of the gene.
<b>Components:</b>	The ORF clone is ion-exchange column purified and shipped in a 2D barcoded Matrix tube containing 10ug of transfection-ready, dried plasmid DNA (reconstitute with 100 ul of water).
<b>Reconstitution Method:</b>	<ol style="list-style-type: none"><li>1. Centrifuge at 5,000xg for 5min.</li><li>2. Carefully open the tube and add 100ul of sterile water to dissolve the DNA.</li><li>3. Close the tube and incubate for 10 minutes at room temperature.</li><li>4. Briefly vortex the tube and then do a quick spin (less than 5000xg) to concentrate the liquid at the bottom.</li><li>5. Store the suspended plasmid at -20°C. The DNA is stable for at least one year from date of shipping when stored at -20°C.</li></ol>
<b>RefSeq:</b>	<a href="#">NM_010323.2</a> , <a href="#">NP_034453.1</a>
<b>RefSeq Size:</b>	1220 bp
<b>RefSeq ORF:</b>	984 bp
<b>Locus ID:</b>	14715
<b>UniProt ID:</b>	<a href="#">Q01776</a>
<b>Cytogenetics:</b>	5 43.56 cM
<b>Gene Summary:</b>	Receptor for gonadotropin releasing hormone (GnRH) that mediates the action of GnRH to stimulate the secretion of the gonadotropic hormones luteinizing hormone (LH) and follicle-stimulating hormone (FSH). This receptor mediates its action by association with G-proteins that activate a phosphatidylinositol-calcium second messenger system.[UniProtKB/Swiss-Prot Function]