

Product datasheet for **MG220231**

Nrn1l (NM_175024) Mouse Tagged ORF Clone

Product data:

Product Type: Expression Plasmids
Product Name: Nrn1l (NM_175024) Mouse Tagged ORF Clone
Tag: TurboGFP
Symbol: Nrn1l
Synonyms: Cpg15-2; G630049C14Rik
Mammalian Cell Selection: Neomycin
Vector: pCMV6-AC-GFP (PS100010)
E. coli Selection: Ampicillin (100 ug/mL)
ORF Nucleotide Sequence: >MG220231 representing NM_175024
Red=Cloning site Blue=ORF Green=Tags(s)

TTTTGTAATACGACTCACTATAGGGCGCCGGGAATTCGTCGACTGGATCCGGTACCGAGGAGATCTGCC
GCC**CGATCGCC**

ATGATGTGCAACTGCTGCCACTGCCACTGGCGCCCGCTGTCAGCGGCTACCCTGTGCCCTGACGCTGT
TGCTGCTACTACCACTCGCAGTGGCCTCTGAGGGCCAAACCGCTGTGATACCATATACCAAGGCTTTGC
TGAATGTCTCATCCGCCTGGGGATGGCATGGGTCGAGGAGGCGAGCTACAGACTGTCTGCAGATCCTGG
AATGACTTCCACGCTGTGCCTCTCGGGTCTGTCAGGCTGCCAGAGGAGGCGGCTGCAGTGTGGGAGT
CACTGCAGCAAGAAGCTCGCCGCGCCACACCCAGATAATTTGCACATCCTCTGTGGCGCTCCTGTGAG
TGTTCCGGAGCGGATTGCTGGCCAGAGACCAACCAGGAGACTACGGGCCACAGCTCCTGCAGTGGCT
CCAGCTCCAGCCCTGTGTTGCTCGCCCGCTCTAGCGCTTGCTGCCTCCTGGGGCTCTGGCC

ACGCGTACGCGGCCGCTCGAG - GFP Tag - GTTTAA

Protein Sequence: >MG220231 representing NM_175024
Red=Cloning site Green=Tags(s)

MMCNCHCHWRRRCQRLPCALLLLLPLAVASEGPNRCDTIYQGF AECLIRLGDGMGRGGELQTVCRSW
NDFHACASRVLSGCP EEA AVWESLQQEARRAPHPDNLHILCGAPVSVRERIAGPETNQETLRATAPALA
PAPAPVLLAAALALACLGLPLA

TRTRPLE - GFP Tag - V

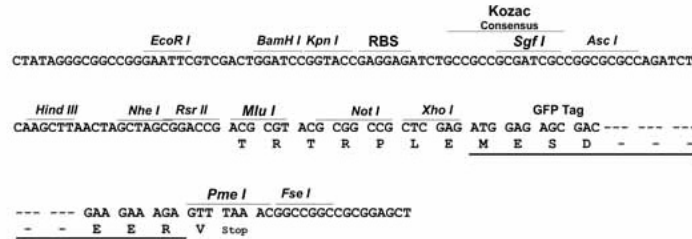
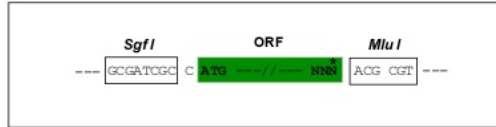
Restriction Sites: SgfI-MluI



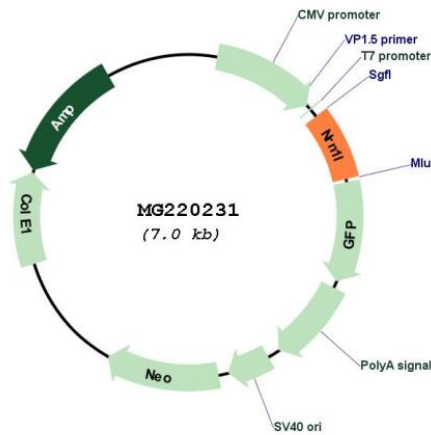
[View online »](#)

Cloning Scheme:

Cloning sites used for ORF Shutting:



Plasmid Map:



ACCN: NM_175024

ORF Size: 486 bp

OTI Disclaimer: The molecular sequence of this clone aligns with the gene accession number as a point of reference only. However, individual transcript sequences of the same gene can differ through naturally occurring variations (e.g. polymorphisms), each with its own valid existence. This clone is substantially in agreement with the reference, but a complete review of all prevailing variants is recommended prior to use. [More info](#)

OTI Annotation: This clone was engineered to express the complete ORF with an expression tag. Expression varies depending on the nature of the gene.

Components:	The ORF clone is ion-exchange column purified and shipped in a 2D barcoded Matrix tube containing 10ug of transfection-ready, dried plasmid DNA (reconstitute with 100 ul of water).
Reconstitution Method:	<ol style="list-style-type: none">1. Centrifuge at 5,000xg for 5min.2. Carefully open the tube and add 100ul of sterile water to dissolve the DNA.3. Close the tube and incubate for 10 minutes at room temperature.4. Briefly vortex the tube and then do a quick spin (less than 5000xg) to concentrate the liquid at the bottom.5. Store the suspended plasmid at -20°C. The DNA is stable for at least one year from date of shipping when stored at -20°C.
RefSeq:	<u>NM_175024.4, NP_778189.1</u>
RefSeq Size:	606 bp
RefSeq ORF:	489 bp
Locus ID:	234700
UniProt ID:	<u>Q8C4W3</u>
Cytogenetics:	8 D3