

Product datasheet for **MG220224**

TII2 (NM_011904) Mouse Tagged ORF Clone

Product data:

Product Type:	Expression Plasmids
Product Name:	TII2 (NM_011904) Mouse Tagged ORF Clone
Tag:	TurboGFP
Symbol:	TII2
Mammalian Cell Selection:	Neomycin
Vector:	pCMV6-AC-GFP (PS100010)
E. coli Selection:	Ampicillin (100 ug/mL)



[View online »](#)

ORF Nucleotide Sequence:

>MG220224 representing NM_011904
 Red=Cloning site Blue=ORF Green=Tags(s)

TTTTGTAATACGACTCACTATAGGGCGGCCGGAATTCGTCGACTGGATCCGGTACCGAGGAGATCTGCC
 GCC**GCGATCGCC**

ATGCCCTTGGACCCTTTGGCACCTGGTGTACTGTTGCTGCTACCGCTGCCCGCGGTGCTGAAG
 TGAAGTGGGACCATTCGAATGTCGCCTTGGACTACGGAGCCTTGAAGGGGAGGAGGGCACGGAGCAGCA
 GCTGCATTACCACGACCCTGCAAAGCTGCTGTCTTCTGGGGAGATATTGCTCTGGATGAAGATGATCTC
 AAGTTATTTACATCGACAAGGCTGAGGACTGGACCAAGCCATCCATTGACAAACCAGGACATGACACTG
 GAGGCCTTGGAGAGACATCTGCAAGGTGGCCAAACGATACAGCCTCTAACGCCAGCATCCAGGCACCAAG
 AAAGGATGGCAAGGATGCCACCACATTTCTGCCTAACCTGGGACCTCAAACACCACCGCTAAGACCTTC
 TCTGCTCGAGTTCGAAGAGCTACAACCTCAAGGACAGAGCGGATTTGGCCTGGAGGGTCAATTCCTATG
 TCATTGGAGGAACTTTACTGGTACCCAGAGGGCCATTTTCAAACAGGCCATGAGGCACTGGGAGAAGCA
 CACCTGTGTGACCTTCGTAGAGAGGACAGATGAGGAAAGCTTCATTGTATTACAGTACAGGACCTGTGGT
 TGTGTTCCTACGTGGGACGCCGAGGAGGTGGCCCGCAGGCCATATCCATCGGGAAAAACTGTGACAAGT
 TCGGCATTGTGGCTCACGAGCTGGGCCATGTGGTTGGTTCTGGCATGAACACACTCGGCCAGACCGAGA
 CCAACATGTACCATCATCAGAGAAAACATCCAGCCAGGTGAGGAGTATAATTTCTTAAAAATGGAAGCC
 GGCGAGGTGAGCTCTCTGGGAGAGACCTACGACTTCGACAGCATCATGCACTATGCCCGAACACCTTCT
 CAAGAGGAGTTTTCTTAGACACCATCTCCCGCTCGAGACGACAATGGCGTCAGGCCAACCATTTGGCCA
 ACGCGTGGGCTCAGTCAGGGAGATAGCTCAAGCCAGGAAGCTGTACAAATGCCAGCATGTGGGGAG
 ACACACAGGACACGACAGGAACTTTTCGGCACCTGGTTTCCAAATGGCTACCCCTCCTATTTCCCACT
 CGCTGTGAGGATCTCCGTCACCCAGGGGAAAAGATCATCTAAATTTACCTCCATGGATTTGTTTAA
 GAGCCCGCTGTGCTGGTACGATTACGTGGAGATCCGGGATGGTTACTGGAGAAAAGGCCCCCTGTTGGGG
 AGGTTCTGTGGCATAAGATACCTGAGTCCCTGTCTCCTCGGACAGCCGGCTCTGGGTGGAATTCGTA
 GCAGCAGCAGCAGCTGGGCAAAGGCTTCTTGTGTATATGAAGCCATGTGTGGGGAGACATAACCAA
 AGATGCAGGCCAGATTAGTCTCCCACTACCCTGACGACTACAGACCTTCCAAGGAATGTGTGGGAGG
 ATCACAGTGGCCGACGGTTCATGTGGGACTTACCTCCAGTCTTCGAGATCGAAAGGCATGACAGTT
 GTGCATATGACTATCTGGAATCCGAGACGGTCCACAGAGGACAGCACCTGATGGCCACTTCTGTGG
 CTACGAGAAGCCGAGGCGTGAATCCAGCGCTAACCGACTGTGGGTGAAGTTGTGTCCGACGGCTCC
 ATCAATAAAGCGGCTTTGCAGCAATTTCTTCAAGGAGGTGGATGAGTGTCTCTGGCCAGACCATGGTG
 GATGTGAGCAGCCTGTGTAACACACTCGGCAGCTACAGTGTGCCTGTGACCTGGCTACGAACCTGGC
 TGCCGACAAGAAGACATGTGAAGTGGCCTGTGGTGGCTTACCTACCAAGCTAAACGGCACCATCACACG
 CCTGGATGGCCGAAGGATATCCCAACAAGAAGTGTGTCTGGCAGGTGGTGGCTCCCGTGCAGTACC
 GCATCTCACTGCAGTTCGAAGCCTTTGAGCTGGAAGGCAATGACGTCTGTAAAGTATGACTTCGTAGAGGT
 GCGCAGTGGCCTGTCCCAAGATGCAAGCTTACCGGCAAAATCTGTGGCTCCGAGACCCCGGAGGTGATC
 ACATCGCAGAGCAACAACATGCGAGTGAATTCAGTCTGACAACACCGTCTCCAAGCGAGGCTTCAGGG
 CTCACCTTCTCAGACAAGACGAGTGTGCCAAAGACAATGGCGGCTGCCAGCAGGAGTGTGTCAACAC
 GTTCGGGAGTTACCTGTGCAGATGCAGGAACGGTACCGACTGCATGAGAACGGACAGCTGCAAAGAG
 GCTGGCTGCGCCTACAAGATCAGCAGTGCAGAGGGGACCCTGATGAGTCTAACTGGCCAGACAAATACC
 CCAGCCGAAGGAATGTACCTGGAACATTTTCATCAACCGCAGGCCACAGGGTGAATAATACATTCAGTGA
 GTTCGAGATTGAGCAGCACAGGAATGTGCCTATGACCACCTGGAAGTGTACGATGGGACAGACAGCTTG
 GCCCCATCCTTGGCCGCTTCTGCGGCAGCAAGAAGCCGGATCCCGTGGTGGCGACAGGCAGCAGCTAT
 TCCTCAGTTTTACTCGGACGCTCAGTGCAGCGGAAAGGCTTCCAGGCTGTGCACAGCACAGAGTGTGG
 GGGCAGGCTGAAGCTGAAGTACAGACCAAGAGCTCTATTCCCATGCCAGTTTGGGGACAACAACACTAC
 CCGAGCCAGGCCGCTGTGACTGGGTGATAGTGGCAGAAGACGGTTATGGCGTGGAGCTGATATCCGGA
 CCTTTGAAGTTGAGGAGGAAGCTGACTGTGGCTACGACTTCATGGAGGCTTATGATGGGTACGACAGCTC
 GGCAACCCAGGCTCGGCCGCTTCTGTGGCTCAGGGCCATTAGAGGAAATCTACTCCGCCGGAGACTCGCTA
 ATGATCCGCTTCCACACGGACGACACCATCAACAAGAAAGGCTTTCACGCCCGGTACACTAGCACCAAGT
 TCCAAGACGCCTTGCACATGAGGAAG

AG**GCGACCG**ACGCGTACGCGGCCGCTCGAG - GFP Tag - GTTTAA

Protein Sequence: >MG220224 representing NM_011904
 Red=Cloning site Green=Tags(s)

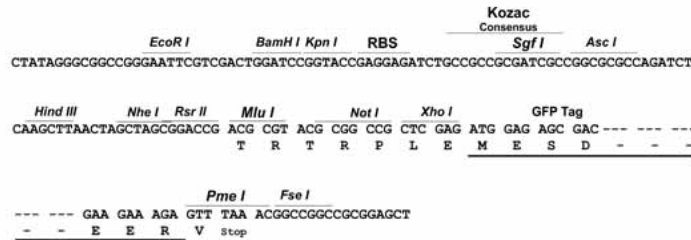
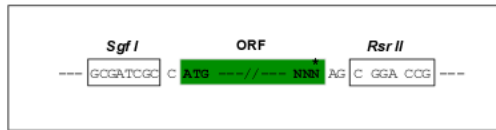
MPLATTLGLTVLLLLLPLPRGAEVTDHNSVALDYGALEGEETEQLHYHDPCKAAVFWGDIALDEDDL
 KLFHIDKAEDWTKPSIDKPGHDTGGLLEETSARWPNDTASNASIQAPRKDGKDATTFLPNPGTSNTTAKTF
 SARVRRATTSRTERIWPGGVIPYVIGGNFTGTQRAIFKQAMRHWEKHTCVTFVERTDEESFIVFSYRTCG
 CCSYVGRRRGGGPQAISIGKNCKDFGIVAHELGHVVGFWHEHTRPDRDQHVTIIRENIQPGQEYNFLKMEA
 GEVSSLGETYDFDSIMHYARNTFSRGVFLDTILPRRDDNGVRPTIGQVRVLSQGDIAQARKLYKCPACGE
 TLQDTTGNFSAPGFPNGYPSYSHCVWRISVTPGEKIILNFTSMDLFSRLCWYDYVEIRDGYWRKAPLLG
 RFCGDKIPESLVSSDRLWVEFRSSSSSLGKGFFAVYEAMCGGDIKTDAGQIQSPNYPDDYRPSKECVWR
 ITVPDGFHVGLTFQSFEIERHDSAYDYLEIRDGPTEDSTLIGHFCGYEKPEAVKSSANRLWKFVSDGS
 INKAGFAANFFKEVDECSWPDHGGCEQRCVNTLGSYTCACDPGYELAADKKTCEVACGGFITKLNGTITS
 PGWPKEYPTNKNCVWQVAVPQYRISLQFEAFELEGNDVCKYDFVEVRSGLSPDAKLHGKFCGSETPEVI
 TSQSNMRVEFKSDNTVSKRGFRAHFFSDKDECAKDNGGCQEQCVNTFGSYLCRCRNGYRLHENGHDCKE
 AGCAYKISSAEGTLMSPNWPDKYPSRRECTWNISSSTAGHRVKITFSEFEIEQHCEAYDHLELYDGTDSL
 APILGRFCGSKKPDVAVATGSSFLRFYSDASVQRKGFQAVHSTECGGRLKAEVQTKELYSHAQFDNNY
 PSQARCDWVIVAEDGYGVELIFRTFEVEEEADCGYDFMEAYDGYDSSAPRLGRFCGSGPLEEIIYSAGDSL
 MIRFHTDDTINKKGFHARYTSTKFQDALHMRK

SGPTRRRLE - GFP Tag - V

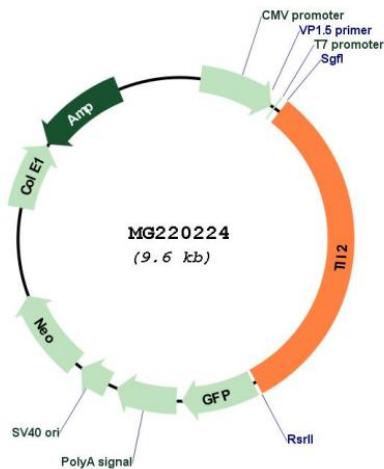
Restriction Sites: SgfI-RsrII

Cloning Scheme:

Cloning sites used for ORF Shuttling:



Plasmid Map:



ACCN: NM_011904

ORF Size: 3036 bp

OTI Disclaimer: The molecular sequence of this clone aligns with the gene accession number as a point of reference only. However, individual transcript sequences of the same gene can differ through naturally occurring variations (e.g. polymorphisms), each with its own valid existence. This clone is substantially in agreement with the reference, but a complete review of all prevailing variants is recommended prior to use. [More info](#)

OTI Annotation: This clone was engineered to express the complete ORF with an expression tag. Expression varies depending on the nature of the gene.

Components: The ORF clone is ion-exchange column purified and shipped in a 2D barcoded Matrix tube containing 10ug of transfection-ready, dried plasmid DNA (reconstitute with 100 ul of water).

Reconstitution Method:

1. Centrifuge at 5,000xg for 5min.
2. Carefully open the tube and add 100ul of sterile water to dissolve the DNA.
3. Close the tube and incubate for 10 minutes at room temperature.
4. Briefly vortex the tube and then do a quick spin (less than 5000xg) to concentrate the liquid at the bottom.
5. Store the suspended plasmid at -20°C. The DNA is stable for at least one year from date of shipping when stored at -20°C.

RefSeq: [NM_011904.4](#)

RefSeq Size: 3369 bp

RefSeq ORF: 3039 bp

Locus ID: 24087

UniProt ID: [Q9WVM6](#)

Cytogenetics: 19 C3

Gene Summary: Protease which specifically processes pro-lysyl oxidase. Required for the embryonic development. Predominant protease, which in the development, influences dorsal-ventral patterning and skeletogenesis.[UniProtKB/Swiss-Prot Function]