

Product datasheet for **MG220188**

Kank3 (NM_030697) Mouse Tagged ORF Clone

Product data:

Product Type:	Expression Plasmids
Product Name:	Kank3 (NM_030697) Mouse Tagged ORF Clone
Tag:	TurboGFP
Symbol:	Kank3
Synonyms:	0610013D04Rik; Ankrd47; D17Ertd288e; NG28
Mammalian Cell Selection:	Neomycin
Vector:	pCMV6-AC-GFP (PS100010)
E. coli Selection:	Ampicillin (100 ug/mL)



[View online »](#)

ORF Nucleotide Sequence:

>MG220188 representing NM_030697
 Red=Cloning site Blue=ORF Green=Tags(s)

TTTTGTAATACGACTCACTATAGGGCGGCCGGGAATTCGTCGACTGGATCCGGTACCGAGGAGATCTGCC
 GCC**CGGATCGCC**

ATGGCCAAGTTTGTCTGAATCAGAACCTTCTGACCTGGGCGGCCCTCCCTGTACCCAGGCCCACTG
 GAAGTGCCCGCAGCCCTAGCTCTCCCTATTCTGTGGAGACGCCCTATGGCTTCCACTTGGACCTGGACTT
 CCTCAAATACGTGGAGGAAATCGAGCGTGGCCCTGCCTCTCGCCGAACTCCAGGACCTCCTCATGCACGC
 CGCCCGCGCGCTCTCGAACGGGCTCGCGGGAGCGGGAGCCAGGAGCTTGGACTTCCAGCGAATCCC
 TGGCCAGTGACGACGGCGGAGCCTCGGGTGCCTCTCTCTGGTGCCTCCCGGGGCTCTCGCTACCTCC
 GCTGTCGCCACGCTCCTGTGCGCAATCCGCGCTTGGACACACGCTCTTGGAGACCAGCCGACGACTG
 GAGCAGGCGCAGGCTCGGGAGCGCGCTCAGCCCGCCCGCGCAGTACACGCGAGTCCGCGGGTCCG
 GCCGTAGCAGCCCGCCCTAACCCGCCCTTGCCTCCCGGGCCCTGCCAGCTGCAGTGTAGGGGA
 GCAGATGGCCGCGCGCTGCGGGCCTGCGTGAGCTCGAGGACCAGGCGCGCTCTGCCGAGCTGCAG
 GAGCAGGTGCGCGCTGCGTGCCGAGAAGGCGCGCTACTGGCCGGGCGCTGCAGCCAGAACAAGAAG
 TAGAGATCGAGGCGGCCAGACAAGCTCGCCAGCTTCGGCGCCTCACCGAGCGTCTGGCCACCTCGGA
 TCGTGGAGTGCCTCCAGGGCTAGCCCCGGGCAGAGGATCCCGACGGGTTGGCTGCCAGGCGCAGCGAA
 GGAGCGCTGCAGGTGCTCGACCCGGGTCTAGGACACCCGATGGGGAACCCCGACTCGGGAGACGGGCA
 CCGAAGTCGTGCCTGAGACCCGAGAGGTGGATGCCAGGCGTACCCGAGACAGGGGAGGCTGGAGTGA
 GGTGGTCCCTGAGACCGTTGAGTGGACACGTGGTGACTGAGGAGCTCCTAGGGTTGCCTGAGGCTGCA
 GAGCGTGAGCTGGAGCTGCTCCGACCAGCTTGGAGCATCAGCGAGGGGTGAGCGAACTTTGCGGGGCC
 GATTGAGGGAGTTGGAGGAGGCCACGAGGCGCAGTGACCAGGCTCAGTCTCGCGAGCTTGTGCCCA
 GACTACATTGGGTTGCACTGAGAAAACACACAGACAGAGCTGCCAGTGGAGAACCAGCCAGACCCACG
 GCTGGAGACGAGATGGCCCTGTTGGCATCCTCAAATCCATCATGAAGAAGAAAGATGGTATTCCAGGTG
 CACAATCCAGTACAGGACCCAAGAGTCTGCAGTTCGTTGGGGTCTCAACGGAGAGTATGAGAGTTCCTC
 CAGTGAGGATGGCAACAGCGATGATGAAGATGGTGTGCTGAACACCCAGGAGTGTCTTCTGGATCA
 GATGATAGCAGTGGGGATCTGACGCTGGAACCCCTGGCCCCACAATGACAAAGATGCTGGGGACTGCG
 AGCTTGAGACACATCCAGAGCTGACGGCAGGGAGAGAAGGGAGGTGTAAGTGAACCCCGTTTGGGGGA
 GGCTTGCATTGCTCTGAATCAGCAGCTGAACCGGCCACGTGGAGTACCAGCAGAGATGGCAATGCAGCA
 CGCCTTGTGGCCAGGAATGGTTTCGAGTGTCCAGCCAAAACGCTCTCAGGCAGAGTCTGTGGCTGGGG
 TTCTTCGAGGGGTGAAAAGCCTGGGGCCTGAGCTGCTGGCTTATGTGGTGAACCTGGCTGATGGCAATGG
 AAACACAGCTCTGCATTACAGCGTGTCTCATGGGAATCTCGCCATTTCCAGCCTGCTACTGGATACAGGG
 GTCTGTGATGTGAATCACCAGAATAGAGCTGGCTACTCTGCCCTCATGTTGGCTGCACTCACTTCTGTAG
 GACAAGAGGAGGAAGACATGGCTGTGGCCAGAGACTTTTCAGTATGGGTGATGTCAATGCCAAGGCTAG
 CCAGACTGGACAGACAGCCCTCATGCTGGCCATCAGCCATGGCCACCAGGACATGGTAGCTGCCTTGCTA
 GAATGCGGGGCTGATGTCAATGTACAGGATGCTGATGGGGCCACAGCACTGATGTGTGCCAGCGAGTATG
 GACGCTTGATACAGTTCAATTGTTGTTGGCCAGCCAGGTTGTGACCTAACCATCTTAGACAATGAGGG
 CACAAGTCCCCTGGCCATTGCACTGGAGGCTGAACAGGATGAGGTGGCTGCACTGCTCCATGCCACCTG
 ACATCAAACCACCAGGACAGTCTTCCACAGGGTCTCCCACTGCAAAGGAATGCAATGACAAA

ACGCGTACGCGGCCGCTCGAG – GFP Tag – GTTTAA

Protein Sequence: >MG220188 representing NM_030697
 Red=Cloning site Green=Tags(s)

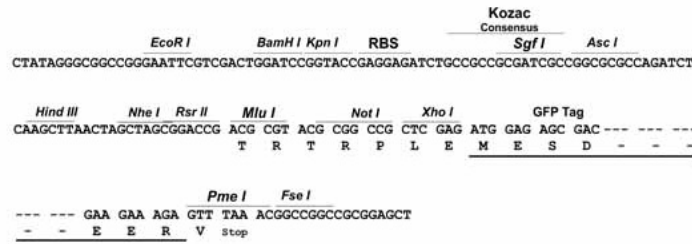
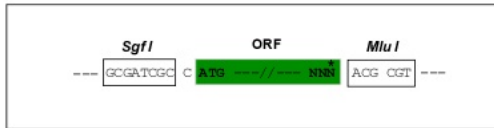
MAKFVLNQNLPDLGGPPLYPGPTGSARSPSPYSVETPYGFHLDLDFLKYYVEEIERGPASRRTPGPPHAR
 RPRASRTGLAGARSPGAWTSSESASDDGGASGALSPGAFPGSLPPLSPRSLSRNPRVEHTLLET SRRL
 EQAQARERALS PARAVTRSPRSGRSPAPNPALASGPAQLQLVREQMAAALRRLRELEDQARALPELQ
 EQVRALRAEKARLLAGRVQPEQEVEIEARPKLAQLRRLTERLATSDRGVRSRSPRAEDPDGLAARRSE
 GALQVLDPGSRTPDGEPRTRTGTVEVVPETREVDQAQVPETGEAGVEVVPETVEVDTWTEELLGLPEAA
 ERELELLRTSLEHQRGVSELLRGRLELEEAHEAAVTRPQSRDVAAQTTLGCTEKTQTQTELPVENQPRPT
 AGDEMAPPVILKSIMKKKDGIPGAQSSQGPKSLQFVGVNLGEYESSSSSEDGNSDDEDGVAEHPRSSSSGS
 DDSSGSDAGTPGPHNDKDAGDCELETHPEL TAGREGRCELNPRLREACIALNQQLNRPVGT SRDGNA
 RLVAQEWFRVSSQKRSQAESVAGVLRGVKSLGPELLAYVNLADGNGNTALHYSVSHGNLAISLLLDTG
 VCDVNHQNRAGYSALMLAALTSVGQEEEDMAVAQRLFSGMDVNAKASQTGQTALMLAISHGHQDMVAALL
 ECGADVNVQDADGATLMCASEYGRLDTVQLLLAQPGCDLTILDNEGTSALAIALAEQDEVAALLHAHL
 TSNHQGSSTGSPTAKECNDK

TRTRPLE - GFP Tag - V

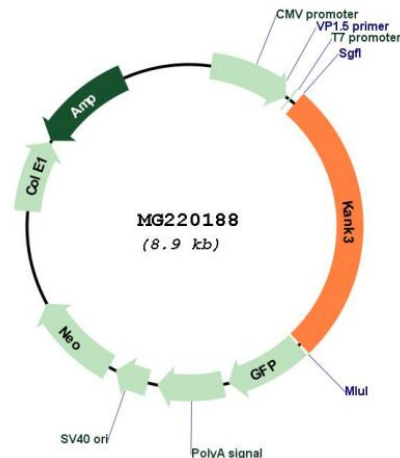
Restriction Sites: SgfI-MluI

Cloning Scheme:

Cloning sites used for ORF Shuttling:



Plasmid Map:



ACCN: NM_030697

ORF Size: 2373 bp

OTI Disclaimer: The molecular sequence of this clone aligns with the gene accession number as a point of reference only. However, individual transcript sequences of the same gene can differ through naturally occurring variations (e.g. polymorphisms), each with its own valid existence. This clone is substantially in agreement with the reference, but a complete review of all prevailing variants is recommended prior to use. [More info](#)

OTI Annotation: This clone was engineered to express the complete ORF with an expression tag. Expression varies depending on the nature of the gene.

Components: The ORF clone is ion-exchange column purified and shipped in a 2D barcoded Matrix tube containing 10ug of transfection-ready, dried plasmid DNA (reconstitute with 100 ul of water).

Reconstitution Method:

1. Centrifuge at 5,000xg for 5min.
2. Carefully open the tube and add 100ul of sterile water to dissolve the DNA.
3. Close the tube and incubate for 10 minutes at room temperature.
4. Briefly vortex the tube and then do a quick spin (less than 5000xg) to concentrate the liquid at the bottom.
5. Store the suspended plasmid at -20°C. The DNA is stable for at least one year from date of shipping when stored at -20°C.

RefSeq: [NM_030697.3](#)

RefSeq Size: 2634 bp

RefSeq ORF: 2376 bp

Locus ID: 80880

UniProt ID: [Q9Z1P7](#)

Cytogenetics: 17 17.98 cM

Gene Summary: May be involved in the control of cytoskeleton formation by regulating actin polymerization.
[UniProtKB/Swiss-Prot Function]