

Product datasheet for **MG220153**

Sohlh1 (NM_001001714) Mouse Tagged ORF Clone

Product data:

Product Type: Expression Plasmids
Product Name: Sohlh1 (NM_001001714) Mouse Tagged ORF Clone
Tag: TurboGFP
Symbol: Sohlh1
Synonyms: Gm110; Nohlh
Mammalian Cell Selection: Neomycin
Vector: pCMV6-AC-GFP (PS100010)
E. coli Selection: Ampicillin (100 ug/mL)
ORF Nucleotide Sequence: >MG220153 representing NM_001001714
 Red=Cloning site Blue=ORF Green=Tags(s)

TTTTGTAATACGACTCACTATAGGGCGGCCGGAATTCGTCGACTGGATCCGGTACCGAGGAGATCTGCC
 GCC**CGATCGCC**

ATGGCGTCCGGTGGCCACGAGCGGGCCAATGAGGATTACAGAGTCTCTGGCATTACGGGATGCAGCAAGA
 CTCCTCAGCCTGAGACTCAGGACAGCTTGCAGACCTCATCACAAAGCTCAGCTCTCTGCACAGCTCCTGT
 GGCTGCTGCAAATTGGGCCAGTCTTCGGAGAAACGTGGTCAGCGAGAGAGAACGCAGGAGCGGGATC
 TCGTTGAGCTGTGAGCACTTGGGGCTCTACTGCCTCAGTTTGATGGCCGACGGGAGGACATGGCATCTG
 TCCTGGAGATGTCTGTACTTCTCCAGCTTGGCCACAGCATGGACCCTAGCTGGGAGCAACTCTCTGT
 TCCTCAGCCTCCCAGGAGATGTGGCACATGTGGCAGGGTGTGTCTGCAGGTAACCCTGGCGAATCAG
 ATTGCAGACAGCAAGCCAGACTCCGGTATAGCCAAACCTCTGCTGTGTCTCGGGTACAGGATCCCCAT
 GCTTTGGGATGCTGGATACAGACCAGAGCCAGGCTACTGAGAGAGAGTCAGAGCTGCTGGAGAGACCTTC
 CTCCTGCCCTGGTCATCGCCAGAGCGGTTGTCAATTCAGTGAGCCAGAGTCTTCCAGCTTGGGTCCTGGG
 CTCCCACCCTGGATCCCTCACTCATGGCAGCCAGCCACTCCCAGGCAAGTGACATTGTTCTGTGGTGGT
 CACACCAGGTGGCATCCCTGGCCGGGACCCTGAATCTTCGGCATGCTGGCTGAGGAGGCCAACTTGGT
 CTTGGCATCTGTGCCTGATGCCAGGTACACCACAGGGGCGGGTCCGATGTGGTGGATGGAGCACCTTT
 CTGATGACCACCAATCCTGACTGGTGGTTGGGGTCCGGTGGAGGGCAGAGGAGGCCAGCCCTTGCAGGA
 GCAGCCCAGTGGATGGGGCAGAGCCAAGCTTCATCGGAGACCCTGAGCTTTGCTCCAGGAGCTCCAGGC
 TGGTCCTGGAGAGCTGTGGGTTTGGATTTTGGCAGCCCTGGCCTGGCCCTGAAGGATGAAGCGGACAGC
 ATCTTCCCTGACTTTTTCCCC

ACGGTACGCGGCCGCTCGAG - GFP Tag - GTTTAA



[View online »](#)

Protein Sequence: >MG220153 representing NM_001001714
 Red=Cloning site Green=Tags(s)

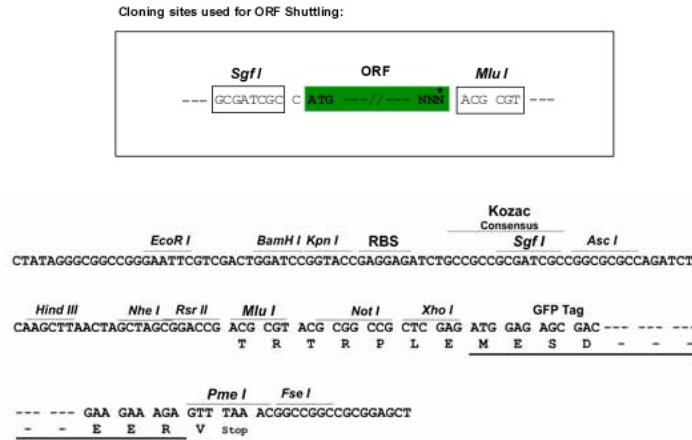
MASGGHERANEDYRVSGITGCSKTPQPETQDSLQTSQSSALCTAPVAAANLGP SLRRNVSERERRRI
 SLSCEHLRALLPQFDGRREDMASVLEMSVYFLQLAHSMDPSWEQLSVPQPQEMWHMWDV LQVTLANQ
 IADSKPDSGI AKPSAVSRVQDPPCFGMLD TDQSQATERSELLERPSSCPGHRQSALSFSEPESSSLGPG
 LPPWIPHSWQPATPEASDIVPGGSHQVASLAGDPESGMLAEEANLVLASVPDARYTTGAGSDVVDGAPF
 LMTTNPDWLGSVEGRGGPALARSSPVDGAEPSF IGDP ELCSELQAGP GELWGLDFGSPGLALKDEADS
 IFPDDFFP

TRTRPLE - GFP Tag - V

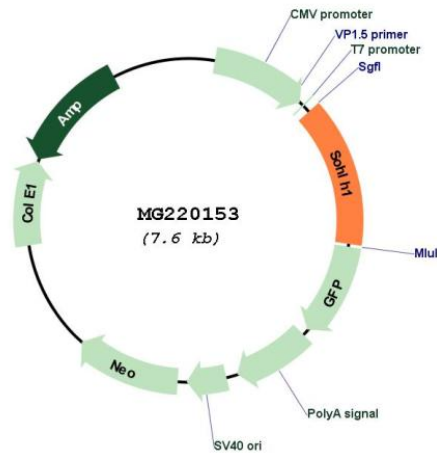
Restriction Sites:

SgfI-MluI

Cloning Scheme:



Plasmid Map:



ACCN:

NM_001001714

ORF Size:	1071 bp
OTI Disclaimer:	The molecular sequence of this clone aligns with the gene accession number as a point of reference only. However, individual transcript sequences of the same gene can differ through naturally occurring variations (e.g. polymorphisms), each with its own valid existence. This clone is substantially in agreement with the reference, but a complete review of all prevailing variants is recommended prior to use. More info
OTI Annotation:	This clone was engineered to express the complete ORF with an expression tag. Expression varies depending on the nature of the gene.
Components:	The ORF clone is ion-exchange column purified and shipped in a 2D barcoded Matrix tube containing 10ug of transfection-ready, dried plasmid DNA (reconstitute with 100 ul of water).
Reconstitution Method:	<ol style="list-style-type: none">1. Centrifuge at 5,000xg for 5min.2. Carefully open the tube and add 100ul of sterile water to dissolve the DNA.3. Close the tube and incubate for 10 minutes at room temperature.4. Briefly vortex the tube and then do a quick spin (less than 5000xg) to concentrate the liquid at the bottom.5. Store the suspended plasmid at -20°C. The DNA is stable for at least one year from date of shipping when stored at -20°C.
RefSeq:	NM_001001714.1 , NP_001001714.1
RefSeq Size:	1314 bp
RefSeq ORF:	1074 bp
Locus ID:	227631
UniProt ID:	Q6IUP1
Cytogenetics:	2 A3
Gene Summary:	Transcription regulator of both male and female germline differentiation. Suppresses genes involved in spermatogonial stem cells maintenance, and induces genes important for spermatogonial differentiation (PubMed:22056784). Coordinates oocyte differentiation without affecting meiosis I (PubMed:28504655).[UniProtKB/Swiss-Prot Function]