

Product datasheet for **MG220118**

Sh2d5 (NM_001099631) Mouse Tagged ORF Clone

Product data:

Product Type: Expression Plasmids
Product Name: Sh2d5 (NM_001099631) Mouse Tagged ORF Clone
Tag: TurboGFP
Symbol: Sh2d5
Synonyms: BC036961
Mammalian Cell Selection: Neomycin
Vector: pCMV6-AC-GFP (PS100010)
E. coli Selection: Ampicillin (100 ug/mL)
ORF Nucleotide Sequence: >MG220118 representing NM_001099631
 Red=Cloning site Blue=ORF Green=Tags(s)

TTTTGTAATACGACTCACTATAGGGCGGCCGGAATTCGTCGACTGGATCCGGTACCGAGGAGATCTGCC
 GCC**CGATCGCC**

ATGCAGAGGGCTGGGGCCGGGGCCGAAGGGCTTCCGACTGTGGGCTGCACCTTACCGGCCAGGTGCA
 TTGCCAAGCTTGCCAGTATGTGGGATCCTTCTGTGGATGACTTGGACTCAGGAGAGCGTGGGCT
 CGTACAGCAGCAGCTATGGGCCCTGCAGGACTGTTCCCGACGCCGGGCTGTCATTCTGAAATTCAGTCTT
 CAGGGTCTCAAGATCTACAGTGGGAGGGCGAGGTGCTCCTAATGGCCATGCGCTGAAGCGCATCTCT
 ATGCCACCTGGTACCCAGCTGCCAGTTTGTCTTTATTGCCCGGAACCCACGCAGCCATCCAGCAA
 GCTCTTTTGTATCTCTTTGTGGGAGCCAGCCTGGAGAGGTCCATATCCTGTATCTGCTGCTCTGCCGT
 TCTTCCAGCTTGCATACCTCTTGCAGCACCTGAGGAGAGGGCAGAGTCTGAGCCTTGCCCTGGCGCCTG
 TAGGGGACCTGTCCCTGAAGCCACTCTGCAGCCCTGGGGTACCCCTGCATTAGTGCGAGAGCCCTTCAG
 CCGGATCAGCTGTACAGAATGTTCAATGCCCTGGTCTCCTTCCGGCGGCTTCTGCAGAAGGGCTCCTG
 GGCAGTAATGGGAAGGAGCTGCCAGAGTCAGAGGGCCGTGGGGCACCCGTCATATTGCGCTGGGAACC
 CCTACTGCTCACCCACTGGTGCAGCAAGAAGGCCATTCGAGCAAGGTGATCCGCTCCGGGGCCTACCG
 AGGCTGCACCTATGAGACCCAGCTTCCAGCTGTCCAGCCGGGAAGCCTTCTGCTGCATGGGAGGGCTGG
 CCCCCTGGCCCTGGTGGCCCTCGTGCCTTGTGGAGAATGAGGGAAGCCTGACAGAGAACATCTGGGCTT
 TTGCTGGCCTTTCCAGGTCTGTGCTCTTCCCTGCTGCGGAGAGATGTGCATGGAGCCTTCTGCTGTG
 GCCAGAGCCAGGTACCAGCGACCAAGTGGAGCCTGTCCGTACGGACCCAGTGTGGCGTGGTGCCTCACCA
 GTCTTCAGGAACCACTAGGCCGTTTCTGCCTAGAGCACCTGCCAGCAGAGTTCCCGAGCCTGGAGGCC
 TGGTGGAGAGCCACGCCGGGTGGAACGAAGTCTCTTCTGCCACTCAGCATGGGCCGTCTCAACCTAC
 CTACGAAGAGCAGGACTGTGGACTGAGGGAAGGTTCCACGGACTCTGCGGCCCTCAGCCACGCCAAG
 TCTGAGCGGAATTGCAAGGCCTGGGC

ACGCGTACGCGGCCGCTCGAG - GFP Tag - GTTTAA



[View online »](#)

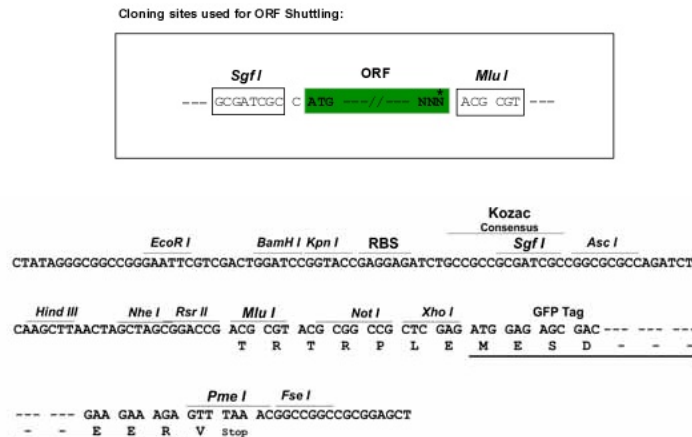
Protein Sequence: >MG220118 representing NM_001099631
Red=Cloning site Green=Tags(s)

MQRAGAGARRASDCGPAPYRPRCIAKLAQYVGSFPVDDLDTQESVGLVQQQLWALQDCSRRRAVILKFSL
 QGLKIYSGEDEVLLMAHALKRILYATWYPAACQFAFIARNPRSPSSKLFCHLFVGSQPGEVHILYLLLCR
 SFQLAYLLQHPEERAQSEPC LAPVGDLSLKPLCSPGVPPALVREPF SRDQLSQNVHALVSFRRLPAEGLL
 GSNGKELPESEGRGGTRHIRLGNPYCSPTLVRKKAIRSKVIRSGAYRGCTYETQLQLSAREAFPAWEAW
 PRGPGGPSCLVENEGLTENIWAFAGLSRSCALSLRRDVHGAFLLWPEPGTSDQWLSVRTQCGVVPHQ
 VFRNHLGRFCLEHLPAEFPSLEALVESHAGVERSLFCPLSMGRLNPTYEEQDCGTEGRFPRTLRLPSHAK
 SEAEQLGLG

TRTRPLE - GFP Tag - V

Restriction Sites: SgfI-MluI

Cloning Scheme:



ACCN: NM_001099631

ORF Size: 1287 bp

OTI Disclaimer: The molecular sequence of this clone aligns with the gene accession number as a point of reference only. However, individual transcript sequences of the same gene can differ through naturally occurring variations (e.g. polymorphisms), each with its own valid existence. This clone is substantially in agreement with the reference, but a complete review of all prevailing variants is recommended prior to use. [More info](#)

OTI Annotation: This clone was engineered to express the complete ORF with an expression tag. Expression varies depending on the nature of the gene.

Components: The ORF clone is ion-exchange column purified and shipped in a 2D barcoded Matrix tube containing 10ug of transfection-ready, dried plasmid DNA (reconstitute with 100 ul of water).

Reconstitution Method:

1. Centrifuge at 5,000xg for 5min.
2. Carefully open the tube and add 100ul of sterile water to dissolve the DNA.
3. Close the tube and incubate for 10 minutes at room temperature.
4. Briefly vortex the tube and then do a quick spin (less than 5000xg) to concentrate the liquid at the bottom.
5. Store the suspended plasmid at -20°C. The DNA is stable for at least one year from date of shipping when stored at -20°C.

RefSeq: [NM_001099631.1](#), [NP_001093101.1](#)

RefSeq Size: 3158 bp

RefSeq ORF: 1290 bp

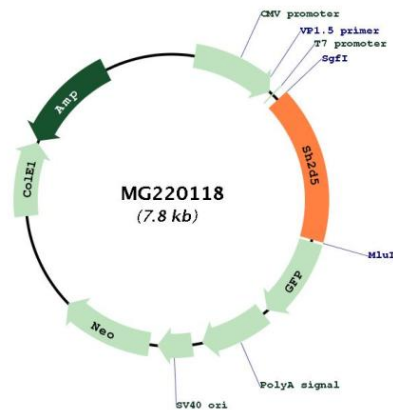
Locus ID: 230863

UniProt ID: [Q8JZW5](#)

Cytogenetics: 4 D3

Gene Summary: May be involved in synaptic plasticity regulation through the control of Rac-GTP levels. [UniProtKB/Swiss-Prot Function]

Product images:



Circular map for MG220118