

## Product datasheet for **MG220108**

### Arhgef28 (NM\_012026) Mouse Tagged ORF Clone

#### Product data:

Product Type:	Expression Plasmids
Product Name:	Arhgef28 (NM_012026) Mouse Tagged ORF Clone
Tag:	TurboGFP
Symbol:	Arhgef28
Synonyms:	9230110L08Rik; AI323540; D13Bwg1089e; p190RhoGEF; Rgnef; RhoGEF; Rhoip2; RIP2
Mammalian Cell Selection:	Neomycin
Vector:	pCMV6-AC-GFP (PS100010)
E. coli Selection:	Ampicillin (100 ug/mL)
ORF Nucleotide Sequence:	>MG220108 representing NM_012026 Red=Cloning site Blue=ORF Green=Tags(s)

TTTTGTAATACGACTCACTATAGGGCGGCCGGAATTCGTCGACTGGATCCGGTACCGAGGAGATCTGCC  
GCC**CGATCGCC**

ATGGAGTTGAGCTGCAGTGAAGTGCCTCTTTATGGACAGAAGACGGTCTATGCAAAGTTTGGCAAAAACG  
TGTATCTACCCGAAGATGCGGAGTTTTACTTTGTTTATGGCGGGTCGCATCAGAGGCACGTGGTATTGC  
TGACCGTGTCCAGGACAATGTCTCCAATCTAGCATTCCAGGCCATTGGCTTCAGGAGACAGTGACGGTA  
TCTGTGTGCTCTGCTCGGAAGGGTACTCCCCAGTGACCATGGGCTCTGGCTCAGTGACCTACGTGGACA  
ACATGGCCTGCAGGCTGGCTCGTCTGCTGGTCACTCAGGCTGACCGACTCACAGCCTGCAGTACCAGAC  
GCTGCTGACCCCGTTTGCCTGACAGTGAAGCGCTGCCTGCCTTGGATGAGGAGCTCGTCTGGCTCTG  
ACCCAAGTGGAGCTGCCTTTGGTTGGACAGTCCCTGGAAATTCCTCACTTGAAGTATCTCTACACAGAG  
AGTCTCTCCTGCACCTGGCTGTGAGATGGGCCCTGCCTAAGCTATTCCACTTCTCTTGTGTCTCCCTGG  
AGGAGTCAAGGCCTTGAAGCTACCTAATGAAGAGGCCACCACACCATTAGACTTAGCTTTGCAAGGTGGA  
CACTCCACACTGGTAGAAGACATCAAAATTTTCAGGGTAGCCATTCCCCAGGCTTCTCCCGACTGCGTC  
TTAACGAAGAGGCCACTCTGCAGTTTGTTCATTCATCGGAAACATTGACCCTGACCGTTAACCACACAGC  
TGAGCATCTCTTGAAGCAGACATCAAATCTTCCGAAATATTTCTGGGACAGAGCCTTTCTTGTCAAG  
GCTCTTGAGCAAGAAGCCAAGACTGAGAAAGCAACCATGCCTTCTGGAGCTGCAGAACTGAAGAAGAGG  
TTAGGAATTTGGAGTCTGGCAGATCACCATCGGAGGAGGAGGAGGATGCAAAGAGCATCAAAAGCCAGGT  
GGATGGGCCGAGTGAACACGAAGACCAGGACCGCTAGCTCTGGATCGCTCCTTTGATGGCCTCAAAAAA  
TCCAAGCATGTCCAGCGTCCCTTGTGTCAGGCCAGCTCTCTGATGTTCTGAACGGGGTGTGAAGTCT  
ACGCTAACTGTATGGTATTGACCAGGTTGGCGATTTGGATATCAACTATATAAACCTAGAGGGACTCTC  
CACCCATACGAGTCCCGAGTCTGGGAGGTCATGCTGGGGCCTCAGGCTTGATGCACACCCCTCTCCTCC  
GACACCAGTCCCTGCGGGCGCCACTCATTGAGAACAGTGAGGGGACCCTGGATGCTGCAGCTTCGAGT  
CTTTCGTGACACCATCCAGTTCTCGCACTTCCAATTTGAACCTTTCTTTTGGTCTCCATGGATTTGAAA  
GGAGCAGAGTCATCTCAAGAAAAGGAGTCTAGCTGGATGCCCTGGTTGCCGACAGTGAGGGGAAGGA



GGTTCAGACCCCATCTGCTATGCTGTGGGCTCTCAGAGTCCCAAGAAGTGGACTCCCCAGCGGG  
 ATGAAGTGGACTCTTTGAGACCAACTGAACAGACTGTAATATCTCCAGGACCGAATCACTCTCT  
 GTCCAGTACTCTGCATTCAAAGGAGTCTTGTCTTCTGGGATCCGGTCTCGCTCTACTCTGCTCATCA  
 CCCAAATCTCTTCAGGAAAATCCCGGCTAGTGCAGGACTTACAGTGTGCAGTACCAGCGAAGAACA  
 GATCATATAGTTTCCAGGAGCCACCAGGAGAAAAAGGATTTCAGGAAGAAGATGGGATGAATACGTCAT  
 TCCTGCCAAATCCGAGTCTGAAAAGTACAAAGTACAAAGTACAAAGTACAAAGTACAAAGTACAAAGT  
 AGCCACCGAACAATCTAAGATGAAAAACAAGGACACTAAAGAAAAAGAAAAATGAATCGACATCAGT  
 TTGTCCCGGGAACGTTCTCCGGGTTCTGCAGTGTCCGGTGTGATAAAAACACTCTGGGAAAGAGTC  
 ACTCCAGTGTGCCAACTGTAAAGGCAACACACACAAGGGCTGCAAAGATGCTGTGCCTCCGTGTACCAAG  
 AAATTCGAAGAGAAATACAACAAGAACAACCACAGAGCATCCTTGAAGCTCTTCAGTCAGAGAGCTCC  
 CAGCACCTGGGCTCTCCTTGACCCTTCTTCTCTATGCCCATCGGACTGCCAGCTGGAAGGAAGGAATT  
 TGCGGCTCAGGTGCATCCACTGTCCAGAAGTGTCCCGGACCACTTTGGAAAGCTTCAGGAGGGCAGTG  
 ACATCGTTAGAGTCTGAGGGTACAGCTGGAGAAGCAGGTCTCATTCCGATGAGCTGTTCCAGTCTATGG  
 GCTCTTCTCCTCCACGGAGTATTTCATGATGGAAGATGTTGTGGATTCTTCTGTGGATCGACCTCAG  
 TAGTGATGCTCAGGAGTTTGAAGCAGAGTCTTGGAGTCTCGTGGTGGACCCTTCTTTTGCAGTAGGCAG  
 GAGAAGGATGTCAAAAGACAAGATGTCAATTTTGTAGCTGATGCAGACAGAGGTCCACCACATCCAGA  
 CTCTGCTCATCATGTCCGAGGTCTTCAGGAAAGGCATGAAGGAGGAACTGCAGCTGGACCACAGCACGGT  
 GGACAAGATCTTCCCCTGCTTAGATGAGCTGTGGAGACTCACCGGCACTTCTTCTTCAGCATGAAGGAG  
 CGCAGGACAGGAGTCTGCGCTGGCAGTGACAGGAACTTTGTGATCAACCAAAATGGAGACATTCTGGTAC  
 AACAGTTTTTCAGAGGAAAATGCAAGCAAAATGAAGAGGATCTATGGAGAATTCTGCAGCCATCACAAAGA  
 AGCCATGAGTCTCTTAAAGAGCTGCAGCAGAACAAGAAGTTTCAGAATTTTAAAGATCCGAAATAGC  
 AACCTGTTGGCTCGTCCCGCGGAATCCCGGAGTGCATCTGCTAGTTACCCAGCGCATCACAAAGTACC  
 CAGTCTTGGTGGAAAGGATCCTGCATACACAAAGGAAAGGACTGAAGAGCACCGGACCTGTGCAAGC  
 TCTCGGCTTAATTAAGACATGATCGCAGCCGTGGACTGAAAGTCAAGCAATACGAGAAGCAACAAAA  
 TGCTCGAGATCTAAATAAAATCGAGAACAACATACACAAAGCTCAAAAATGGCCACGTGTTTAGAA  
 AGCAGGGCTGTGAGCCAGGAACGGGCTCTCCTGCATGATGGGCTTGTCTACTGAAAACCGCTACGGG  
 TCGCTTCAAAGACATCCTGGCTCTGCTACTAAGTACAGTGTCTCTTCTTACAAGAAAAAGACCAGAAA  
 TACATCTTGCAGCTGTTGACCAGAAGCCATCAGTATTTCCCTCCAGAAGCTGATTGCTAGAGAAGTTG  
 CCAACGAGGAGAGAGGCATGTTTCTGATCAGTGTTCGTGAGCCGGCCCCGAGATGTACGAAATCCACAC  
 CAATTCGAAGGAGGAGCGGAATAACTGGATGAGGCGGATCCAGCAGGCAGTAGAAAGTTGTCAGAGGAA  
 GAAGGAGGAAGGACGAGCGAGTCCGATGAAGAGAGGCGGAAAGCTGAAGCTAGAGTGGCCAGATTCAGC  
 AATGTCAAGAAATACTCAGTAACCAAGCAACAGATTTGCACGTAAGTGAAGAAAAAGTGCATATCTA  
 CGCTGAACCTGGGAACTGAGTGGCTTTGAGGATGTCCACCTAGAACCCCATCTGCTCATCAAACCTGAC  
 CCTGGAGAGCCTCCCCAGGCAGCGTCCCTGCTTGCAGCAGCCCTGAGAGAAGCCGAGAGTCTGCAAGTGG  
 CTGTGAAGGCTTCAAAGATGGGCGATGTAAGCCAGTCAACGAAGAAAGCCCTGGAGGGACTGTCCTGAT  
 GGACACACCCAGTACACAGGATGTACCAGCGTACCAACTGCTTCATTAGTCACAGAAGGGACAGAAGGA  
 AGAGGCTGTTGGGATGTGGATCCCGGCTCCAGGGTGTGGTAACCGACTTGGCAGTCTCTGATGCAGGGG  
 AGAAGTGGAATATAGAAGTTTCTCCGGTCTTTCACAGTACAGAGATTACAAGCAATACAGAATTTAAC  
 GCGTCTCTCTACAGCCTTCAGGCTGCCTTACCATCCAGGACAGTACATTGAGATCCACAACCTGGTT  
 CTACAGCAGCGGGAGAGCTTGGCCCTAGCCACTCCTTCCGAGGTGGCCCTTGAAGACCAGGAGAAAT  
 CCCGCTACCTGGAAGCAGCGTGAAGAGCTGGCAACATCCACAAGCTTCAACACCAGTTCAGCAGGA  
 GCAGCGGCTGGCACCACAGTGCAGCCAGCAACAGCGCAGCAGGAAGCCCAAGAGAGCTGGCTGCAG  
 GCGCGGGAACGTGAGTGCCAGTCCAGGAGGAATTGTTGCTGCGCACCGTAGCGAGCTGGACCACCAAC  
 TCCAGGAGTACCAGCAGAGCCTTGAAGGCTACGGGAGGGCCAGCGGATGGTGGAGAGGGAGAGACAGAA  
 GATGCGTGTCCAGCAGGGTCTGCTGGGCCACTGCAAGCATAGTCGCCAGCGGAGCCTCCAGCCGCTTCT  
 TCTCCAGGAGCAAGGAGGTAACAGAATTAACCGAGCTGAGAGTTTGTGTCATGAAAATTCATTTTTCA  
 TCAATGAAGCTTTTGGACACATGCACTTAACACGTCCAATAAACCAACCCATCAGGGTCCCCTGGGA  
 TGCTCACCCCTGGAGGGTCTCATTTTGTGTTGGCAAGGACTAGTGAAGTCCAACAGAAGTGAAGATA  
 GACATTTCTCAGCCTCCTGATGTCAACTCTGAACTCTGGACAACGGGGCCGGCCATCAGAGACCTGCTC  
 TCCAAGAAAACAGCAAGGAGTCTTAAAAATGTTGCAGATTTGGACTCCTTCCAGAGTGAATCGTCATC  
 TCCCCAGGACTCCAATCAGCGTGGCCCCAGCCACAGACTCACAACAGAAGCAAACTAAGTCTTCCG  
 ATGGCGGCTGGACACGGTGGCGATGCTGGAGACGGGGCTGAAGAAAACATTTTACCTC

AGCGGACCGACGCGTACGCGGCCGCTCGAG - GFP Tag - GTTTAA

**Protein Sequence:**

>MG220108 representing NM\_012026  
 Red=Cloning site Green=Tags(s)

MELSCSEVPLYGQKTVYAKFGKNVYLPEDAIFYFYGGSHQRHVVIADRVQDNVLQSSIPGHWLQETVTV  
 SVCLCSEGYSPVTMGSGSVTYVDNMACRLARLLVTQADRLTACSHQTLTPFALTV EALPALDEELV LAL  
 TQLELPLGWTVLGNSLSEVSLHRESLLHLAVRWALPKLFHLLCLPGGVKALKLPNEEATPLDLALQGG  
 HSTLVEDITNFQGSHPGFSRLRLNEEATLQFVHSSETLTLTVNHTAEHLLEADIKLFRKYFWDRALVVK  
 ALEQEAKEKATMPSGAAETEEVNRNLESGRSPSEEEEDAKSIKSQVDGPPSEHEDQDRALDRSFDGLKK  
 SKHVPASLAAGQLSDVNLGGDEVYANCMVIDQVGDLDINYINLEGLSTHTSPESGRSMLGPQACMHTLPP  
 DTSPCGRPLIENSEGLDAAASQSFVTPSSRSTSNLNL SFGHGF EKEQSHLKKRSSLDALVADSEGG  
 GSEPPICYAVGSQSPRTGLPSGDELDSFETNTEPCDNI SRTELSL SSSLHKS ELLSGIRSRYSYSCSS  
 PKIISGKSR LVRDFTVCSTSEEQRYSYFQEPPEKRIQE EEWDEYVIPAKSEK YKVSRTFSFLMNRMT  
 SPRNKS KMKNKDTKEKEKMNRHQFVPGTFSGVLQCSGCDKTL LGKESLQCANCKANTHKGCKDAVPPCTK  
 KFQEKYNKNKPQSILGSSSVRDVPAPGLSLHPSSMPIGLPAGRKEFAAQVHPLSRVPGTTLESFRRAV  
 TSLESEGDSWRSRSHSDELFSQSMGSSPSTESFMMEDVVDSSLWIDLSSDAQEFAESWSLVVDPFCSRQ  
 EKDVIKRQDVIFELMQTEVHHIQTLIMSEVFRKGMKEELQLDHSTVDKIFPCLDELLETHRHHFFSMKE  
 RRQESCAGSDRNFVINQIGDILVQQFSEENASKMKRIYGEFCSHHKEAMSLFKELQONKKFQNF IKIRNS  
 NLLARRRGIPECILLVTQRITKYPVLVERILQYTKERTEHRDLCKALGLIKDMI AAVDLKVSEYEKNQK  
 WLEILNKIENKTYTKLKNGHVFRKQALLSQERALLHDGLVYWKATGRFKDILALLLTDVLLFLQEKDQK  
 YIFAAVDQKPSVISLQKLIAREVANEERMFLISASSAGPEMYE IHTNSKEERNNMRRIQQAVESCP EE  
 EGGRTSE SDEERRKAEARVAKIQCCQEILSNQDQQICTYLEEKLHIYAELGELSGFEDVHLEPHLLIKPD  
 PGEPPQAASLLAAALREAESLQVAVKASKMGDVSQSSEESPGGTVLM DTPSTQDVPASPTASLVTEGTEG  
 RGCWDVDPGLQGVVTDLAVSDAGEKVEYRSFSGSSQSEIQAIQNLTRLLYSLQAALTIQDSHIEIHKLV  
 LQQRESLAPSHSFRGGPLQDQEKSRYLEKQREELANIHKLQHQFQQEQRRWHRTCDQQQREQEAEQSWLQ  
 ARERECQSQEELLLRHRSELDHQLQEYQQSLERLREGQRMVERERQKMRVQQGLLGHCKHSRQRSLPAVF  
 SPGSKEVTELNRAESLCHENSFFINEAFGHMSLNTSNKPNPSGVPWDAHPLEGSHFDLARTSESPTELKI  
 DISQPPDVNSELWTTGPGHQRPALQENSKESYKNVADLDSFQSESSSPQDSNRGFPQPQTLTTEAKLSLP  
 MAAGHGDDAGDGAENILYL

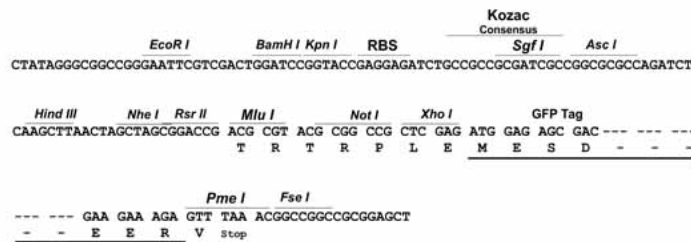
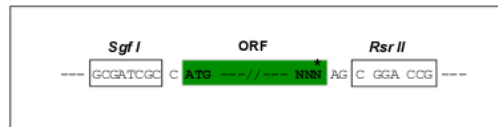
SGPTRRRLE - GFP Tag - V

**Restriction Sites:**

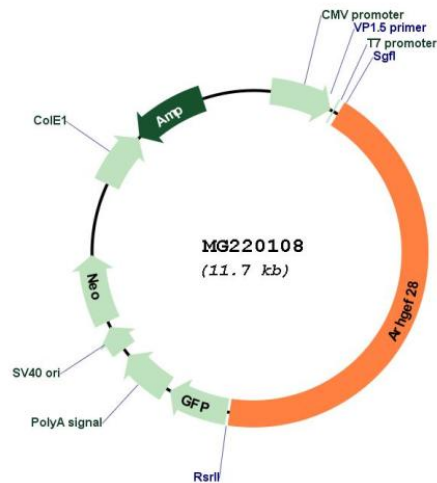
Sgfl-RsrII

**Cloning Scheme:**

Cloning sites used for ORF Shuttling:



## Plasmid Map:



ACCN: NM\_012026

ORF Size: 5100 bp

OTI Disclaimer: The molecular sequence of this clone aligns with the gene accession number as a point of reference only. However, individual transcript sequences of the same gene can differ through naturally occurring variations (e.g. polymorphisms), each with its own valid existence. This clone is substantially in agreement with the reference, but a complete review of all prevailing variants is recommended prior to use. [More info](#)

OTI Annotation: This clone was engineered to express the complete ORF with an expression tag. Expression varies depending on the nature of the gene.

<b>Components:</b>	The ORF clone is ion-exchange column purified and shipped in a 2D barcoded Matrix tube containing 10ug of transfection-ready, dried plasmid DNA (reconstitute with 100 ul of water).
<b>Reconstitution Method:</b>	<ol style="list-style-type: none"><li>1. Centrifuge at 5,000xg for 5min.</li><li>2. Carefully open the tube and add 100ul of sterile water to dissolve the DNA.</li><li>3. Close the tube and incubate for 10 minutes at room temperature.</li><li>4. Briefly vortex the tube and then do a quick spin (less than 5000xg) to concentrate the liquid at the bottom.</li><li>5. Store the suspended plasmid at -20°C. The DNA is stable for at least one year from date of shipping when stored at -20°C.</li></ol>
<b>RefSeq:</b>	<a href="#">NM_012026.2</a> , <a href="#">NP_036156.2</a>
<b>RefSeq Size:</b>	6259 bp
<b>RefSeq ORF:</b>	5103 bp
<b>Locus ID:</b>	110596
<b>UniProt ID:</b>	<a href="#">P97433</a>
<b>Cytogenetics:</b>	13 51.6 cM
<b>Gene Summary:</b>	Functions as a RHOA-specific guanine nucleotide exchange factor regulating signaling pathways downstream of integrins and growth factor receptors. Functions in axonal branching, synapse formation and dendritic morphogenesis. Functions also in focal adhesion formation, cell motility and B-lymphocytes activation. May regulate NEFL expression and aggregation and play a role in apoptosis.[UniProtKB/Swiss-Prot Function]