

## Product datasheet for **MG220069**

### Matk (NM\_010768) Mouse Tagged ORF Clone

#### Product data:

Product Type:	Expression Plasmids
Product Name:	Matk (NM_010768) Mouse Tagged ORF Clone
Tag:	TurboGFP
Symbol:	Matk
Synonyms:	CHK; HYL; Ntk; p56ntk
Mammalian Cell Selection:	Neomycin
Vector:	pCMV6-AC-GFP (PS100010)
E. coli Selection:	Ampicillin (100 ug/mL)



[View online »](#)

**ORF Nucleotide Sequence:**

>MG220069 representing NM\_010768  
 Red=Cloning site Blue=ORF Green=Tags(s)

TTTTGTAATACGACTCACTATAGGGCGGCCGGAATTCGTCGACTGGATCCGGTACCGAGGAGATCTGCC  
 GCC**CGCATCGCC**

ATGGCAAGGCGAAGCTCCCGGGTCTCCTGGCTGGCCTTTGAAGGCTGGGAATCTAGGGACCTGCCTCGGG  
 TGAGCCCTAGATTGTTCCGAGCTTGGCACCCCGCCTGCTGCAGCTAGGATGCCAACGCGCTGGGCCCC  
 TGGGACTCAATGCATGACCAAGTGTGAGAACTCTCGCCCCAAGCCCGGTGAGCTAGCCTTTCGAAAGGGT  
 GACATGGTGACCATCTTGGAGGCCTGTGAGGACAAGAGCTGGTACCGAGCCAAGCACCATGGCAGTGGGC  
 AGGAAGGGCTGCTGGCGGCCGCTGCTCTGCGACAGCGGGAGGCCCTCTCCACAGACCCCAAGCTCAGCCT  
 CATGCCATGGTTTCATGGCAAGATCTCCGGCCAGGAAGCCATACAGCAGCTGCAGCCACCCGAGGACGGG  
 CTGTTCCCTGTGAGGGAATCAGCTCGTACCCTGGAGACTATGTCTTGTGTGTGAGTTTCGGCCGTGACG  
 TCATCCACTACCGTGTTCATCGAGATGGGCACCTCACCATCGATGAGGCCGTGTGTTTCTGTAACCT  
 GATGGACATGGTGGAGCACTACACCAAGGACAAGGGGGCCATCTGCACCAAGCTGGTGAAGCCAAGGAGG  
 AAACAGGGCGCAAAGTCTGCAGAGGAGGAGCTCGCCAAGGCTGGCTGGCTACTCGACCTGCAGCATCTGA  
 CTCTGGGAGCACAGATTGGAGAGGGGAGTTTGGAGCCGTCTACAGGGTGAAGTACCTGGGACAGAAGGT  
 GGCTGTGAAGAATATCAAGTGTGATGTGACAGCCAGGCCCTTCTGGATGAGACGGCTGTGATGACGAAG  
 CTGCAGCACAGGAACCTAGTGCAGCTCCTGGGTGTGATCCTGCACCACGGCTTGTACATTGTGATGGAGC  
 ACGTGAGCAAGGGCAACCTGGTGAACCTTCTGCGCACGGGGCCGTGCTTGTGAGCACCTCTCAGCT  
 TCTGCAGTTTGTCTTTCATGTTGCTGAAGGCATGGAATACCTGGAGAGCAAGAAGCTGGTGCACCCGGAC  
 CTGGCTGCTCGGAACATCCTGGTCTCTGAGGACTTGGTGGCAAGGTGAGTACTTGGCTTACCAAAAGG  
 CAGAGCGCAAGGGGCTGGACTCAAGCCGGCTGCCAGTCAAGTGGACGGCACCTGAGGCTCTCAAAAACGG  
 GCGGTTCTCCAGCAAGTCCGATGTCTGGAGTTTGGGGTGTGTTGTGGGAAGTCTTCTCTATGGAAGA  
 GCCCATACCCCAAGATGTGCTAAAGGAGTTTCAAGGCTGTGGAGAAGGTTACCGCATGGAGCCCC  
 CCGATGGCTGCCAGGCTCTGTGACACCCCTCATGGGTAGCTGCTGGGAGGACAGCCTGCGCGCCGACC  
 ACCCTTCCGAAAATAGTGGAGAAGCTGGGCCGTGAGCTCCGAGTGTGGGTGTCTCGGCCCCCGCTGGG  
 GGACAGGAGGCTGAGGGCTCAGCTCCACACGGAGCCAGGACCCC

**ACGCGTACGCGGCCGCTCGAG** – GFP Tag – GTTTAA

**Protein Sequence:**

>MG220069 representing NM\_010768  
 Red=Cloning site Green=Tags(s)

MARRSSRVSWLAFEGWESRDLPVSPRLFGAWHPAPAAAMPTRWAPGTQCMTKCENSRPKPGELAFRKG  
 DMVTILEACEDKSWYRAKHHGSGQEGLLAAAALRQREALSTDPKLSLMPWFHGKISGQEAIQQLQPPEDG  
 LFLVRESARHPGDYVLCVSFGRDVIHYRVLHRDGHLLTIDEAVCFNLMDMVEHYTKDKGAICTKLVKPRR  
 KQGAKSAAEEELAKAGWLLDLQHLTLGAQIGEGEFGAVLQGEYLGQKVAVKNIKCDVTAQAFLEDAVMTK  
 LQHRNLVRLLGVILHHGLYIVMEHVSKGNLVNFLRTRGRALVSTSQLLQFALHVAEGMEYLESKKLVHRD  
 LAARNILVSEDLVAKVSDFGLAKAERKGLDSSRLPVKWTAPEALKNGRFSKSDVVSFVLLWEVFSYGR  
 APYPMKSLKEVSEAVEKGYRMEPPDGCPSVHTLMGSCWEAEPARRPPFRKIVEKLGRELRSVGSAPAG  
 GQEAEGSAPTRSQDP

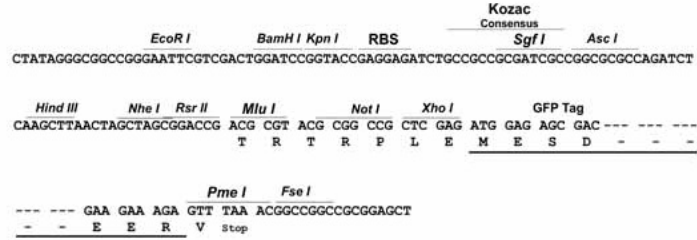
**TRTRPLE** – GFP Tag – V

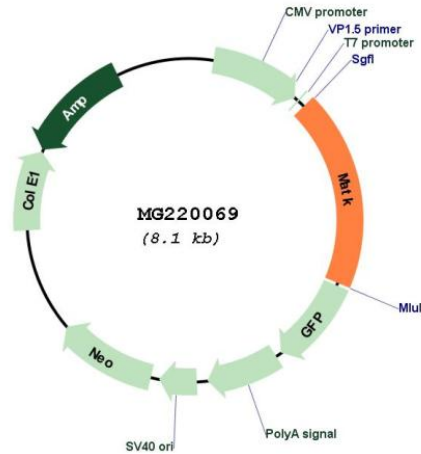
**Restriction Sites:**

Sgfl-MluI

Cloning Scheme:

Cloning sites used for ORF Shutting:



**Plasmid Map:**


**ACCN:** NM\_010768

**ORF Size:** 1515 bp

**OTI Disclaimer:** The molecular sequence of this clone aligns with the gene accession number as a point of reference only. However, individual transcript sequences of the same gene can differ through naturally occurring variations (e.g. polymorphisms), each with its own valid existence. This clone is substantially in agreement with the reference, but a complete review of all prevailing variants is recommended prior to use. [More info](#)

**OTI Annotation:** This clone was engineered to express the complete ORF with an expression tag. Expression varies depending on the nature of the gene.

**Components:** The ORF clone is ion-exchange column purified and shipped in a 2D barcoded Matrix tube containing 10ug of transfection-ready, dried plasmid DNA (reconstitute with 100 ul of water).

**Reconstitution Method:**

1. Centrifuge at 5,000xg for 5min.
2. Carefully open the tube and add 100ul of sterile water to dissolve the DNA.
3. Close the tube and incubate for 10 minutes at room temperature.
4. Briefly vortex the tube and then do a quick spin (less than 5000xg) to concentrate the liquid at the bottom.
5. Store the suspended plasmid at -20°C. The DNA is stable for at least one year from date of shipping when stored at -20°C.

**RefSeq:** [NM\\_010768.2](#), [NP\\_034898.1](#)

**RefSeq Size:** 1734 bp

**RefSeq ORF:** 1518 bp

**Locus ID:** 17179

**UniProt ID:** [P41242](#)

**Cytogenetics:** 10 C1

**Gene Summary:** Could play a significant role in the signal transduction of hematopoietic cells. May regulate tyrosine kinase activity of SRC-family members in brain by specifically phosphorylating their C-terminal regulatory tyrosine residue which acts as a negative regulatory site. It may play an inhibitory role in the control of T-cell proliferation.[UniProtKB/Swiss-Prot Function]