

Product datasheet for **MG220050**

Gbp2 (NM_010260) Mouse Tagged ORF Clone

Product data:

Product Type:	Expression Plasmids
Product Name:	Gbp2 (NM_010260) Mouse Tagged ORF Clone
Tag:	TurboGFP
Symbol:	Gbp2
Mammalian Cell Selection:	Neomycin
Vector:	pCMV6-AC-GFP (PS100010)
E. coli Selection:	Ampicillin (100 ug/mL)



[View online »](#)

ORF Nucleotide Sequence:

>MG220050 representing NM_010260
 Red=Cloning site Blue=ORF Green=Tags(s)

TTTTGTAATACGACTCACTATAGGGCGGCCGGAATTCGTCGACTGGATCCGGTACCGAGGAGATCTGCC
 GCC**GCGATCGCC**

ATGGCCTCAGAGATCCACATGTCCGAACCCATGTGCCTCATTGAGAACACTGAGGCTCAACTAGTGATCA
 ACCAGGAGGCTCTGAGGATCCTGTCTGCCATTACACAGCCTGTGGTGGTGGCGATCGTGGGCCCTCTA
 CCGCACAGGCAAATCCTACCTGATGAACAAGCTGGCTGGGAAGAGGACAGGCTTTTCCCTGGGCTCCACT
 GTGCAGTCTCACACCAAGGGCATCTGGATGTGGTGTGTGCCTCACCCCAAGAAGGCAGGGCAAACCTGG
 TTCTGCTTGACTGAGGGCCTTGAAGATGTTGAGAAGGGTGACAACCAGAATGACTGCTGGATCTTTGC
 TTTGGCAGTCTCCTCAGCAGCACCTTCATCTACAACAGCATAGGAACCAACACAGCAGGCCATGGAC
 CAGCTGCACTATGTGACAGAGCTAACTGATCTTATCAAGTCAAAGTCATCACCTGATCAGAGTGGGATAG
 ACGATTCCGCTAACTTTGTGGGCTTCTTCCAACCTTTGTGTGGACTCTGAGAGATTTCTCCCTCGAGCT
 GGAGGTTAACGGAAAACCCGTCCTTCTGATGAGTACCTGGAACATTCCTGACCCTGAAAAAGGAGCT
 GATAAGAAAACAAAAGCTTTAATGAGCCGCGACTGTGCATCAGGAAATCTTTCCAAAGAGGAAGTGT
 TCATCTTTGACAGGCCTGCTCAGAGGAAGCAACTAGCAAACCTGGAGACTCTGCGGGAGGAGGAGCTGTG
 TGGTGAATTTGTAGAACAAGTTGAGAATTCACCTCATAACATCTTGTGACTCTTCTGTCAAGACTCTG
 TGTGGTGGCATCATAGTCAATGGCCACGTCTAAAGAGCCTGGTGCAGACCTATGTTGGTGCATCAGCA
 ATGGGTCTCTCCCTGCATGGAGAGTGTGTGCTGACTTTGGCCAGATAGAGAAGTCAAGCAGCAGTGA
 AAAGGCCATCACCACTATGAAGAACAGATGAATCAGAAGATCCAGATGCCACAGAAACCTCCAGGAG
 CTCCTGGATCTGCACAGGCCAATTGAGAGTGAGGCCATTGAGGTCTTCTGAAGAATTTCTCAAGGATG
 TAGACAAAAGTCCAGACAGAATTAGGGAACCTGCTGGTAGCCAAAGCAGATGCCTTTAACAAGAAGAA
 CATGGATGTCTCATCAGCTCGTTGCTCAGACTTGCTGGAGGATATTTTTGGACCCCTGGAAGAAGAAGTA
 AAATTAGGACATTTTTCTAAACCAGGAGTTACTACCTCTTCTCAAATGAGACAAGAGCTAGAGAAAA
 AGTATAACCAGGCTCCTGGGAAGGGGCTCCAGGCAGAAGCGATGTGAAAAACTACTTTGATTCCAAGGC
 AGATGTTGTTGAAACACTTCTACAGACGGATCAGTCACTCACAGAGGCAGCAAAGGAGGTAGAAGAGGAA
 CGTACGAAGGCTGAAGCTGCTGAAGCTGCAAACAGAGAGTTAGAAAAGAAGCAGAAGGAGTTCGAGCTGA
 TGATGCAGCAGAAGGAAAAGAGTTACCAGGAGCATGTGAAGAAGCTGACTGAGAAGTGAAGACGAACA
 GAAACAGTTATTAGCAGAACAGGAAAACATCATAGCTGCTAAACTCGGGAACAGGAAAAATTTCTTAAG
 GAAGATTGAGAATGAGAGCAAAAACCTATTTCGAGAGATTGATACCCTGAAGCAAAAACAAATCGTCTG
 GGAAGTGCATACTACT

ACGCGTACGCGGCCGCTCGAG – GFP Tag – GTTTAA

Protein Sequence:

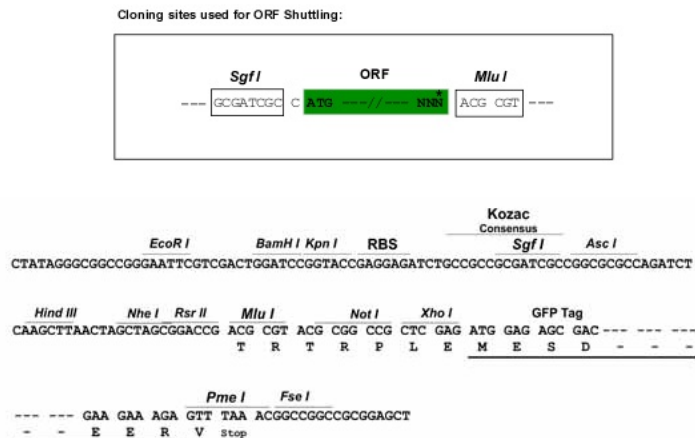
>MG220050 representing NM_010260
 Red=Cloning site Green=Tags(s)

MASEIHMSEPMCLIENTEAQLVINQEALRILSAITQPVVVVAIVGLYRTGKSYLMNKLAKGRTGFSLGST
 VQSHTKGIWMWCVPHPKKAGQTLVLLDTEGLEDEKGDNQDCWIFALAVLLSSTFIYNSIGTINQQAMD
 QLHYVTELTDLIKSKSSPDQSGIDDSANFVGFPTFFVWTLRDFSLLELVNGKPVTSDEYLEHSLTLKKG
 DKKTKSFNEPRLCIRKFFPKRKFIFDRPAQRKQLSKLETLREEELCGEFVEQVAEFTSYILSYSSVKTL
 CGGIIVNGPRLKSLVQTYVGAISNGSLPCMESAVLTLAQIENSAVQKAIHYYEEMNQKIQMPTEITLQE
 LLDLHRPIESEAEIEVFLKNSFKDQVQKQTELGNLLVAKRDAFIKKNMDVSSARCSLDLEDIFGPLEEEV
 KLGTFKPGGYLFLQMRQLEKKYNQAPGKGLQAEAMLKNYFDSKADVETLLQTDQSLTEAAKEVEEE
 RTKAEAAEAANRELEKKQKEFELMMQKEKSYQEHVKKLTKMKDEQKQLLAEQENIIAAKLREQEFLK
 EGFENESKKLIREIDTLKQNKSSGKCTIL

TRTRPLE – GFP Tag – V

Restriction Sites:

SgfI-MluI

Cloning Scheme:


ACCN: NM_010260

ORF Size: 1767 bp

OTI Disclaimer: The molecular sequence of this clone aligns with the gene accession number as a point of reference only. However, individual transcript sequences of the same gene can differ through naturally occurring variations (e.g. polymorphisms), each with its own valid existence. This clone is substantially in agreement with the reference, but a complete review of all prevailing variants is recommended prior to use. [More info](#)

OTI Annotation: This clone was engineered to express the complete ORF with an expression tag. Expression varies depending on the nature of the gene.

Components: The ORF clone is ion-exchange column purified and shipped in a 2D barcoded Matrix tube containing 10ug of transfection-ready, dried plasmid DNA (reconstitute with 100 ul of water).

Reconstitution Method:

1. Centrifuge at 5,000xg for 5min.
2. Carefully open the tube and add 100ul of sterile water to dissolve the DNA.
3. Close the tube and incubate for 10 minutes at room temperature.
4. Briefly vortex the tube and then do a quick spin (less than 5000xg) to concentrate the liquid at the bottom.
5. Store the suspended plasmid at -20°C. The DNA is stable for at least one year from date of shipping when stored at -20°C.

RefSeq: [NM_010260.1](#), [NP_034390.1](#)

RefSeq Size: 2471 bp

RefSeq ORF: 1770 bp

Locus ID: 14469

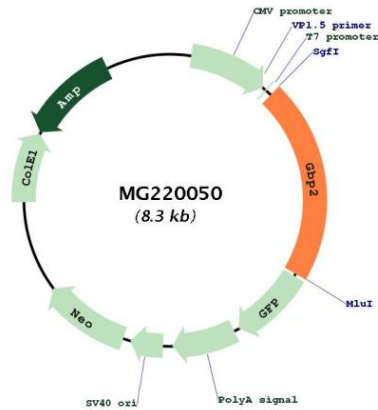
UniProt ID: [Q9Z0E6](#)

Cytogenetics: 3 66.69 cM

Gene Summary:

Hydrolyzes GTP to GMP in 2 consecutive cleavage reactions, but the major reaction product is GDP (By similarity). Exhibits antiviral activity against influenza virus. Promote oxidative killing and deliver antimicrobial peptides to autophagolysosomes, providing broad host protection against different pathogen classes (By similarity).[UniProtKB/Swiss-Prot Function]

Product images:



Circular map for MG220050