

Product datasheet for **MG220030**

Adgrf4 (NM_030067) Mouse Tagged ORF Clone

Product data:

Product Type:	Expression Plasmids
Product Name:	Adgrf4 (NM_030067) Mouse Tagged ORF Clone
Tag:	TurboGFP
Symbol:	Adgrf4
Synonyms:	4632435A09Rik; AV239010; Gpr115
Mammalian Cell Selection:	Neomycin
Vector:	pCMV6-AC-GFP (PS100010)
E. coli Selection:	Ampicillin (100 ug/mL)



[View online »](#)

ORF Nucleotide Sequence:

>MG220030 representing NM_030067
 Red=Cloning site Blue=ORF Green=Tags(s)

TTTTGTAATACGACTCACTATAGGGCGGCCGGGAATTCGTCGACTGGATCCGGTACCGAGGAGATCTGCC
 GCC**CGGATCGCC**

ATGAAGCCCTGGATTGCCATGGTTTGTGTTTTAGTATTTTTCTGACAACAGAATGTTCTCATTCCAAC
 CCAAGACTCACAGAAAAGATGAAGATAAAATTTCAAATATCTCTACAGAAGCATGAGTTTAGACCAAGACA
 AGGTAAATGTGATGGACTATGCAGCTCTTCTTCCAGCTGTAACCCAGAGCTGTCCTTGGAACCTCCGTGGA
 GAAATCGTATTCACATGTAATCAAAACAATGGCAAAAAACAATCGAAACATGCACAAGTCTCTGTGG
 ACACCTTGTTCAGCGCATACATCCTGCAGCTAGCCTATCCTTGGCGTCTTCTTGTTTTTCCCATGAG
 CTTAATTGGCAATGCAGCACCAGTCCATATTGGAAATGTATTTCAAGGAATCCAAAAGTACTGCCCCGAG
 GACTACGTTTGCATTGTTGATGCTGTGAAATCCTCTGCAGTTACATCTGGAAATATTGCATTCATAGTAG
 AGTTATTAATAAATATCCCTTCAAACCTGCAAACCTTCTGGAATACATGATAATGTGAATTGGAAGAAAAT
 GAAGAATATGGCAAAGTGGCCAACCATATCCTTGGCCCCACTGCCATTTCAAATGGGCTTTCATTGCC
 AACAAAAATGCCAGCTCAGATCTGTTGGAGTCGGTGAACCTTTTTGCCAAGAAAATCCAAATCCAAGGTA
 AATCTGAGAGCATCGTAGATGAACCTTTTATTACAGACGAAAGGCTCTCGTATCTCTCACAGTTCCCTCAGA
 GCACAGCCTCAGCCTCTGTACCCAGGTACAATGCTACAGAAGATGCTTAGTGGTGATCGAAAATCCT
 AGGCAAGCATTACAGGAGCTGTCGTTCAATGCCTCCCAAGCCATTGTTGTCGCTTTTCCAACCTTGGGGG
 CCATTCTAAAAGAAGTCCATCAGCCAAATACAAGTCTCCAAAAGCCTATAGATGACCTCATCCTATCACT
 GGTTTTGCCAGAAGTCTGAACGAAATCATACTACCTTTGATAAAATCAATAAATCCCAGAGCACCAGC
 AGCCAGTGTGTCAGCTGGGATCCTGTAAACAGGGCAGTGGGATGAGAGCCCATGTACAGTGATGTCAGACA
 TCAATAGCACAGTGAAATGCCGGTGCAGGCACACCAAGCTGTGACGTCCTTCTCCATCCTCATGTCTTC
 TAAGCCTGTAAGAATAACGATTCTGAACCATATCACCTTCATTGGACTCAGCATCTCCATCTTTAGCTTG
 GTGCTCTGCCTGGTCATTGAGGCCATCGTCTGGTCCCAGGTCGTTGTGACAGAGATATCCTACATGCGCC
 ACGTGTGCATCGTGAACATTGCAGTGTCCCTCCTGACTGCCAATGTGTGGTTCATCATTGGCTCCAACCT
 CAGTGCCAACGTTCCAGGAGGATCACAAGTGGTGTGGCTGTGACATTTCTCTGCCACTTCTCCTCCTC
 TCCCTGTCTTCTGGATGCTCTTCAAAGCGTGTCTCATAGTCTATGGAATACTGGTTGTCTTCCGCAGGA
 TGATGAAGTCTCGGATGATGGCCATTGGCTTTGCCATTGGCTATGGGTGTCCCCTGTGATCGGGTCAT
 CACTGTTACTGTCACAGAGCCTGGGAAGGCTACACCAGAAAAGATGCCTGTTGGCTTAATTGGAACCAA
 ACCAAAGCCCTTTTTGCTTTTGTATCCCAGCCTTGGCCATTGTGGCTGTGAATCTCCTTGTGGTCTGG
 CAGTTGCTATCAACACACAGAGGCCCTTGATTGGCAGTTCAAATCTCAGGATATGGCCATTGTTTTAG
 GATCAGCAAAAATGTTGCCATCCTACCCCACTTCTGGGACTGACCTGGGGTTTTGGTCTAAACCCCTG
 CTAGAGGGCGTACACCTGGTATTCCATATAATCTTCGCCTTGCTCAATGCTTTCCAGGGCTTTTTCATCT
 TGCTGTTTGGTACCATTATGGATCACAAGATAAGAGATGCTCTGAGGATGAGGGTATCTTCATTGAAGGG
 GAAATCAAGGGCAGCAGAGAAGGTGTCATTAAGTCCAGCCAATGGATCCAGAATACTGAATCGC

ACGCGTACGCGGCCGCTCGAG - GFP Tag - GTTTAA

Protein Sequence: >MG220030 representing NM_030067
 Red=Cloning site Green=Tags(s)

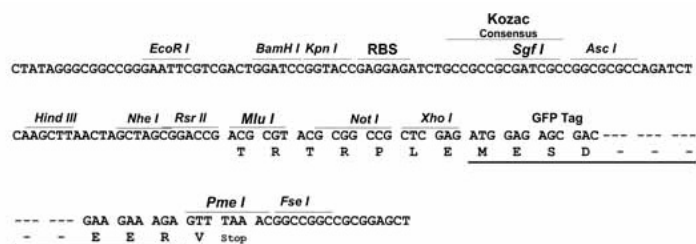
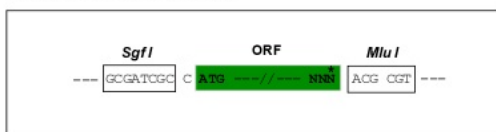
MKPWIAMVCLVFFLTTECSHSPKTHRKDEDFQISLQKHEFRPRQGKCDGLCSSSSSCNQSCPWNFRG
 EIVFTCNQNKWQKTIETCTSLVDTLFRQIHPAASLASSSVFPMSLIGNAAPVHIGNVFQGIQKYCPE
 DYVCIVDAVKSSAVTSGNIAFIVELLKNIPSNLQTSGIHDNVNWKMKNYGKVANHILGPTAISNWAFIA
 NKNASSDLLESVNSFAKKLQIQKSESI VDELFIQTKGSRI SHSSSEHSLSL SVPRYNATEDVLVIEIP
 RQALQELSFNASQAI VVAFPTLGAILKEVHPNTSLQKPIDDLLSLVLPEGLNEIILT FDKINKSQSTS
 SQCVSWDPVTGQWDESPCTVMSDINSTVKRCRHTKAVTSFSILMSSKPVKNTILNHITFIGLSISIFSL
 VLCLVIEAIVWSRVVTEISYMRHVCIVNIAVSLLTANVWFIIGSNFSANVQEDHKWCVAVTFLCHFFLL
 SLFFWMLFKALLIVYGILVVFRRMMKSRMAIGFAIGYGCLVIAVITVTVTEPGEGYTRKDACWLNWNQ
 TKALFAFAIPALAI VAVNLLVLA VAINQRPLIGSSKSDMAIVFRISKNVAIL TPLLGLTWGFLTTL
 LEGVHLVFHIIIFALLNAFQGGFILLFGTIMDHKIRDALRMVSSSLKGSRAAEKVSLS PANGSRILNR

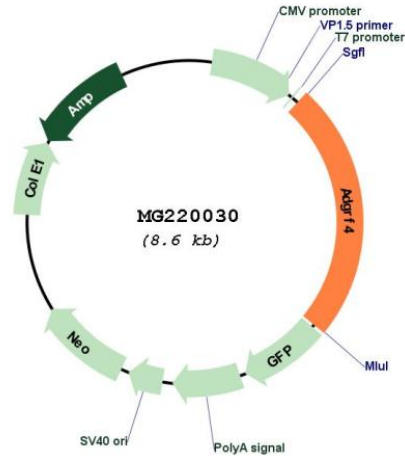
TRTRPLE - GFP Tag - V

Restriction Sites: SgfI-MluI

Cloning Scheme:

Cloning sites used for ORF Shuttling:



Plasmid Map:


ACCN: NM_030067

ORF Size: 2094 bp

OTI Disclaimer: Due to the inherent nature of this plasmid, standard methods to replicate additional amounts of DNA in *E. coli* are highly likely to result in mutations and/or rearrangements. Therefore, OriGene does not guarantee the capability to replicate this plasmid DNA. Additional amounts of DNA can be purchased from OriGene with batch-specific, full-sequence verification at a reduced cost. Please contact our customer care team at custsupport@origene.com or by calling 301.340.3188 option 3 for pricing and delivery.

The molecular sequence of this clone aligns with the gene accession number as a point of reference only. However, individual transcript sequences of the same gene can differ through naturally occurring variations (e.g. polymorphisms), each with its own valid existence. This clone is substantially in agreement with the reference, but a complete review of all prevailing variants is recommended prior to use. [More info](#)

OTI Annotation: This clone was engineered to express the complete ORF with an expression tag. Expression varies depending on the nature of the gene.

Components: The ORF clone is ion-exchange column purified and shipped in a 2D barcoded Matrix tube containing 10ug of transfection-ready, dried plasmid DNA (reconstitute with 100 ul of water).

Reconstitution Method:

1. Centrifuge at 5,000xg for 5min.
2. Carefully open the tube and add 100ul of sterile water to dissolve the DNA.
3. Close the tube and incubate for 10 minutes at room temperature.
4. Briefly vortex the tube and then do a quick spin (less than 5000xg) to concentrate the liquid at the bottom.
5. Store the suspended plasmid at -20°C. The DNA is stable for at least one year from date of shipping when stored at -20°C.

RefSeq: [NM_030067.1](#), [NP_084343.1](#)

RefSeq Size: 3060 bp

RefSeq ORF: 2097 bp

Locus ID: 78249

UniProt ID: [Q9D2L6](#)

Cytogenetics: 17 B3

Gene Summary: Orphan receptor.[UniProtKB/Swiss-Prot Function]