

Product datasheet for **MG219998**

Kctd21 (NM_001039039) Mouse Tagged ORF Clone

Product data:

Product Type: Expression Plasmids
Product Name: Kctd21 (NM_001039039) Mouse Tagged ORF Clone
Tag: TurboGFP
Symbol: Kctd21
Synonyms: EG622320
Mammalian Cell Selection: Neomycin
Vector: pCMV6-AC-GFP (PS100010)
E. coli Selection: Ampicillin (100 ug/mL)
ORF Nucleotide Sequence: >MG219998 representing NM_001039039
Red=Cloning site Blue=ORF Green=Tags(s)

TTTTGTAATACGACTCACTATAGGGCGGCCGGAATTCGTCGACTGGATCCGGTACCGAGGAGATCTGCC
GCC**CGATCGCC**

ATGTCTGACCCATTACACTGAATGTTGGGGGAAGCTCTACACAACCTCACTGGCAACCCTGACCAGCT
TCCCCGACTCCATGCTGGGGCCATGTTTCAGTGGGAAGATGCCACCAAGAGGGACAGCCAGGGTAACTG
CTTCATTGACCGTGATGGCAAAGTGTCCGCTATATCCTCAACTTCCTGCGGACCTCTCACCTGGATCTG
CCAGAGGACTTCCAGGAGATGGGTCTGCTGCGCAGGGAAGCCGACTTCTACCAGGTACAGCCCTGATCG
AGGCCCTGCAGGAAAAAGAGGTAGAACTCTCAAGGCGGAGAAGAATGCCATGCTTAACATCACCCCTGAA
GCAGCGCGTGCAGACGGTCCACTTCACCGTGCAGGAGGCCACCACAGATCTACAGCCTGTCGTCTCCAGC
ATGGAGGTGTTCAACGCCAACATCTTCAGCACGTCTGCTCCTCCTCAAACCTCTGGCTCTAAGCTCT
TCTACTGCTCCAATGGCAATCTCTCCTCCATCACCCAGCCACTTGCAGGACCCTAACCATCTGACTCTTGA
CTGGGTAGCCAATGTGGAAGGCTTCCAGAGGAAGGTACACCAAGCAGAACCTGAAAAGGCTGTGGGTG
GTCCCTGCCAACAAGCAGATCAACAGCTTCCAGGTCTTTGTGGAGGAGGTGCTGAAGATCGCTCTGAGTG
ATGGGTCTGCATTGACTCTCCACCCACAGCTCTGGACTTCATGAACAATAAGATCATTCCGGTTAAT
CCGGTACAGG

ACGCGTACGCGGCCGCTCGAG - GFP Tag - GTTTAA



[View online »](#)

Protein Sequence: >MG219998 representing NM_001039039
 Red=Cloning site Green=Tags(s)

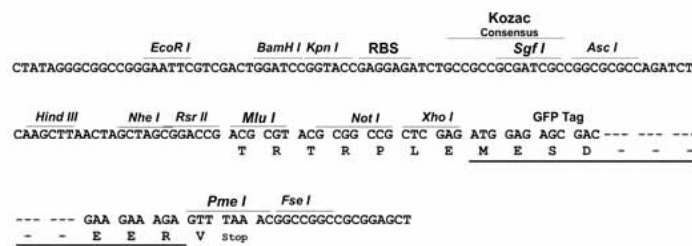
MSDPITLNVGGKLYTTSLATLTSFPDMSMLGAMFSGKMPTKRDSQGNCFIDRDGKVFRIYILNFLTSHLDL
 PEDFQEMGLLRREADFYQVQPLIEALQEKEVELSKAEKNAMLNITLKQRVQTVHFVTVREAPQIYLSLSSSS
 MEVFNANIFSTSCFLKLLGSKLFYCSNGNLSSITSHLQDPNHLTLDWVANVEGLPEEEYTKQNLKRLWV
 VPANKQINSFQVFVEEVKIALSDGFCDSSHPHALDFMNNKIIRLIRYR

TRTRPLE - GFP Tag - V

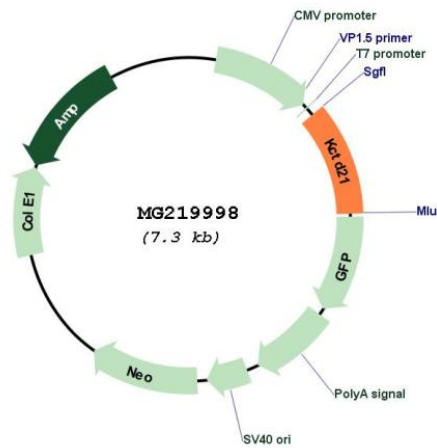
Restriction Sites: SgfI-MluI

Cloning Scheme:

Cloning sites used for ORF Shutting:



Plasmid Map:



ACCN: NM_001039039

ORF Size: 780 bp

OTI Disclaimer:	The molecular sequence of this clone aligns with the gene accession number as a point of reference only. However, individual transcript sequences of the same gene can differ through naturally occurring variations (e.g. polymorphisms), each with its own valid existence. This clone is substantially in agreement with the reference, but a complete review of all prevailing variants is recommended prior to use. More info
OTI Annotation:	This clone was engineered to express the complete ORF with an expression tag. Expression varies depending on the nature of the gene.
Components:	The ORF clone is ion-exchange column purified and shipped in a 2D barcoded Matrix tube containing 10ug of transfection-ready, dried plasmid DNA (reconstitute with 100 ul of water).
Reconstitution Method:	<ol style="list-style-type: none">1. Centrifuge at 5,000xg for 5min.2. Carefully open the tube and add 100ul of sterile water to dissolve the DNA.3. Close the tube and incubate for 10 minutes at room temperature.4. Briefly vortex the tube and then do a quick spin (less than 5000xg) to concentrate the liquid at the bottom.5. Store the suspended plasmid at -20°C. The DNA is stable for at least one year from date of shipping when stored at -20°C.
RefSeq:	NM_001039039.3 , NP_001034128.2
RefSeq Size:	2975 bp
RefSeq ORF:	783 bp
Locus ID:	622320
UniProt ID:	Q3URF8
Cytogenetics:	7 E1
Gene Summary:	Probable substrate-specific adapter of a BCR (BTB-CUL3-RBX1) E3 ubiquitin-protein ligase complex mediating the ubiquitination and subsequent proteasomal degradation of target proteins. Promotes the ubiquitination of HDAC1. Can function as antagonist of the Hedgehog pathway by affecting the nuclear transfer of transcription factor GLI1; the function probably occurs via HDAC1 down-regulation, keeping GLI1 acetylated and inactive. Inhibits cell growth and tumorigenicity of medulloblastoma (MDB).[UniProtKB/Swiss-Prot Function]