

## Product datasheet for **MG219991**

### **Kbtbd12 (NM\_001142724) Mouse Tagged ORF Clone**

#### **Product data:**

Product Type:	Expression Plasmids
Product Name:	Kbtbd12 (NM_001142724) Mouse Tagged ORF Clone
Tag:	TurboGFP
Symbol:	Kbtbd12
Synonyms:	4833415F11Rik; 4933428M03Rik; Klhdc6
Mammalian Cell Selection:	Neomycin
Vector:	pCMV6-AC-GFP (PS100010)
E. coli Selection:	Ampicillin (100 ug/mL)



[View online »](#)

**ORF Nucleotide Sequence:**

>MG219991 representing NM\_001142724  
 Red=Cloning site Blue=ORF Green=Tags(s)

TTTTGTAATACGACTCACTATAGGGCGGCCGGAATTCGTCGACTGGATCCGGTACCGAGGAGATCTGCC  
 GCC**CGCATCGCC**

ATGGAGTGCAAGACTAAGGGGAAACACCAGCATAGCTTGAACCTACTAGATAAAAATTAAGAATATGAAAG  
 AGTTAGAAGAAATGATTGATGTAGTGCTCATAGCAGAAGAGGAGAAATCCCTTGCCACAGACTGGTGCT  
 CGCTGCCTTTAGTCCTTATTTCAAGGCTATGTTACCTGTGGACTACTCGAGTGCCTCAGAGAGAGGTC  
 AACTCTATGACATCACAGCAGAAAGTGTGTGAGTATTAACACTACATGTACAGTGTCTCTGGAGA  
 TCAATAACGCCAACGTTACAGCCGTAGCCATGGCTGCCTATTTTATGCAGATGGAAGAAGCTTTAGTGT  
 GTGCCAAAATATATGATGGACCACATGGATGCCTCCAACCTGCATAGGAATTTACTTTGCAAAAACA  
 ATCGGAGCAGAAGATTTATCGGATCAGTCGAAGAAGTATTTATACCAGCACTTCGCCGAGGTAAGCCTTC  
 ATGGAGAAATACTTGACATCGAAGCTCACCAGCTTCTGGCACTTATTAAGTCTGATGATCTGAATATATC  
 CAGAGAAGAGAGCATTCTGGATTTGGTTCTGAGATGGGTAAACCATAACCAAGCTTTGCGCACAGAGCAT  
 CTGCTTGAAGCAAGTCAAGTGAACCTATAAACGCTTCCTTTCTAAGACAGGCCCTCAGAA  
 GGAACACGATGCTCCTTTGTGATGGCAGTTGCATTGATATAATCCAGAATGCGTTCAAAGCCATCAAGAC  
 ACCCCAGCAGCACCCCTCCAACCTTCGCTATGGCATGGAGACCACCAGCCTTCTGCTTTGCATTGGGAAC  
 AATTCTTCTGGAATCAGATCAAGGCACAGGAGCTATGGGGATGCCAGTTTTTGTATGACCTGTGTAC  
 ACAAGACCTATTTTATCTCATCACCAAGTATGGGGAGGGTTGGGAACGTGTGCACTGGGGTAGTCAT  
 GGAAAACAATACTGTAATTTGGCTGGAGAAGCAACTGCCACTAGGCTCTTAGGCAAAAGCAAGAAT  
 ATTGAAATCTATAGGTATCATGATAGAGGAAACCAGTTTTGGGAAAAGTTATGCACAGCTGAATTTGAG  
 AGCTCTATGCTCTGGGCAGCATCCATAATGACCTCTATGTCATAGGAGGACAGATGAAAATTAACCA  
 GTACCTCATAACAACTGTGTTGATAAGTACTCAGTAGATCAAGACAACCTGGAAAACGAGTATCTCCCTT  
 CCACTGCAGCTGGCTTGTGATGCTGTGGTAACAGTGAACAATAAACTGTATGTCATCGGAGGCTGGACCC  
 CTCAGGTTAAGAAATTCCTTGCATATCTACCTGGTGTGGCTGGCTTTGCTGAAAAATGTAGCAGTCAT

**ACGCGTACGCGGCCGCTCGAG** - GFP Tag - GTTTAA

**Protein Sequence:**

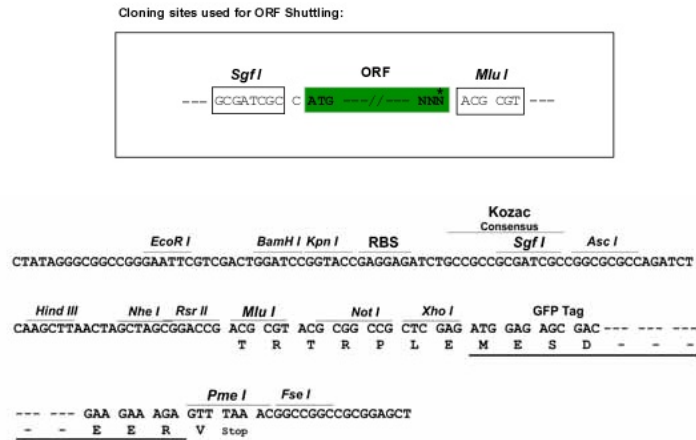
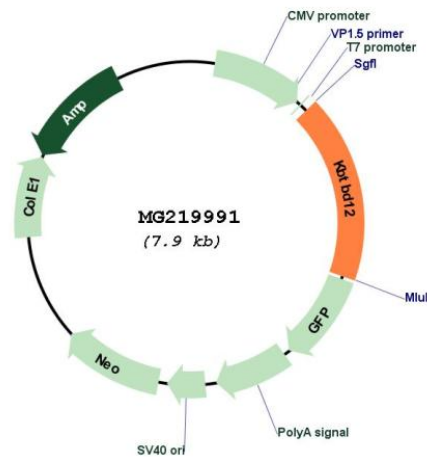
>MG219991 representing NM\_001142724  
 Red=Cloning site Green=Tags(s)

MECKTKGKHQHSLLLDKIKNMKELEEMIDVVLIAEEEEKFPCHRLVLAASFSPYFKAMFTCGLLECTQREV  
 ILYDITAESVSVILNYMSAVLEINNANVQTVMAAYFMQMEEVSVQCQNYMMDHMDASNCIGIYYFAKQ  
 IGAEDLSDQSKKYLQHF AEVSLHGEILDIEAHQLLALIKSDDLNISREESILDLVLRWVNHQALRTEH  
 LVELLKQVRELEINASF LRQALRRNTMLLCDGSCIDI IQNAFKAIKTPQQHPSNLR YGMETTSLLLCIGN  
 NSSGIRSRHRSYGDASF CYDPVSHKTYF ISSPKYGEGLTVCTGVVMMENNTVIVAGEATRLSRQKSKN  
 IEIYRYHDRGNQFWEKLCTAEFREL YALGSIHNDLYVIGGQMKIKNQYLITNCVDKYSVDQDNWKRVSPL  
 PLQLACHAVVTVNNKLYIGGWTPQVKFLAYLPGVAGFAEKCSSH

**TRTRPLE** - GFP Tag - V

**Restriction Sites:**

Sgfl-MluI

**Cloning Scheme:**

**Plasmid Map:**


ACCN: NM\_001142724

ORF Size: 1398 bp

OTI Disclaimer: The molecular sequence of this clone aligns with the gene accession number as a point of reference only. However, individual transcript sequences of the same gene can differ through naturally occurring variations (e.g. polymorphisms), each with its own valid existence. This clone is substantially in agreement with the reference, but a complete review of all prevailing variants is recommended prior to use. [More info](#)

OTI Annotation: This clone was engineered to express the complete ORF with an expression tag. Expression varies depending on the nature of the gene.

<b>Components:</b>	The ORF clone is ion-exchange column purified and shipped in a 2D barcoded Matrix tube containing 10ug of transfection-ready, dried plasmid DNA (reconstitute with 100 ul of water).
<b>Reconstitution Method:</b>	<ol style="list-style-type: none"><li>1. Centrifuge at 5,000xg for 5min.</li><li>2. Carefully open the tube and add 100ul of sterile water to dissolve the DNA.</li><li>3. Close the tube and incubate for 10 minutes at room temperature.</li><li>4. Briefly vortex the tube and then do a quick spin (less than 5000xg) to concentrate the liquid at the bottom.</li><li>5. Store the suspended plasmid at -20°C. The DNA is stable for at least one year from date of shipping when stored at -20°C.</li></ol>
<b>RefSeq:</b>	<u>NM_001142724.1, NP_001136196.1</u>
<b>RefSeq Size:</b>	1639 bp
<b>RefSeq ORF:</b>	1401 bp
<b>Locus ID:</b>	74589
<b>Cytogenetics:</b>	6 D1