

Product datasheet for **MG219979**

Xrcc3 (NM_028875) Mouse Tagged ORF Clone

Product data:

Product Type:	Expression Plasmids
Product Name:	Xrcc3 (NM_028875) Mouse Tagged ORF Clone
Tag:	TurboGFP
Symbol:	Xrcc3
Mammalian Cell Selection:	Neomycin
Vector:	pCMV6-AC-GFP (PS100010)
E. coli Selection:	Ampicillin (100 ug/mL)
ORF Nucleotide Sequence:	>MG219979 representing NM_028875 Red=Cloning site Blue=ORF Green=Tags(s)

TTTTGTAATACGACTCACTATAGGGCGGCCGGGAATTCGTCGACTGGATCCGGTACCGAGGAGATCTGCC
GCC**CGATCGCC**

ATGGACTTGGATCAGCTGGACCTAAACCCCGAATTACTGCTGCGGTTAAGAGGGGCAGACTGAAGTCAG
TGAAGGAGATTCTGTGCTACTCCGGACCAGACTTGCAGCGGCTCACCGCCTGCCAGCCACGATGTGCA
GTGCTGCTGAGAGCTGCCTCTCTACACCTTCGGGAAGCCGCTCCTCTCAGCACTGCATCTGTTCCAG
CAGAAGGAGAGCTTCCCTGAGCAGCATCAACGCCTGAGCCTAGGCTGCCCTGTCTGGATCAGTTCTGG
GTGGAGGCTGCCCTGGAGGGCATCACTGGCCTGGCTGGCTGCAGCTCAGCAGGAAAGACCCAGCTGGC
GCTACAGCTCTGCCTGGCTGTGCAGTTCCTCAAGACAATATGGAGGCCTAGAGGCCGGGGCTGTCTACATC
TGCACAGAAGATGCCTTCCCCAGCAAGCGGCTGTGGCAGCTCATCGCGCAGCAGCGGAGGCTGCGGACAG
ACGCGCCTGAGGAGCTGATCGAGAAGATCAGGTTCAAGCAACACATCTTCATTGAACACGCGGCCGACGT
GGACACCTTGTGGAGTGTGTGAGTAAGAAAGTCCCCATCCTGCTGTGAGGGGCATGGCCCGCCTGGT
GTGGTTGACTCCATTGCAGCCCCATTCGTTGTGAGTTCCACCTTCAGGCCTCAGCCATCAGGGCGAAGC
TCCTGCTCTCGCTGGGGCCCACTGCGAAGACTGAGCAGCACCTTCAGGAGCCAGTGTGTGCATCAA
CCAGGTGACAGACATGGTGGAGGACCAGCAGTCTGTGTCAGGTCAGTGGGCTTCAGAAGAGCGCCTC
TCTCCAGCCCTTGGCATCACCTGGGCTAACAGCTCCTGATGCGACTGATGGTTGACCGCACCCATGAGG
ACGATGTTACCACAGGCTTGCCAGAAGCCAGTTCGGACTCTCCGAGTGTCTTCGCCCCACCTACC
CCTCTCTCTGCTGCTACACAGTCAGTGGGAAGGCATTAGGGGATGCCAGGAACACAGTCTCTAC

ACGCGTACGCGGCCGCTCGAG - GFP Tag - GTTTAA



[View online »](#)

Protein Sequence: >MG219979 representing NM_028875
 Red=Cloning site Green=Tags(s)

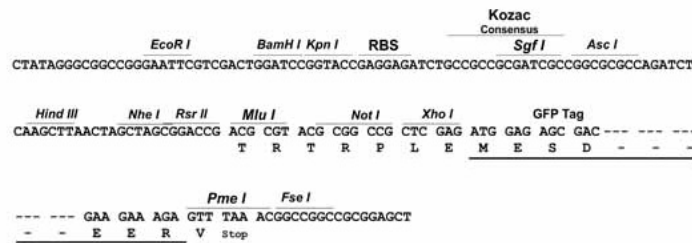
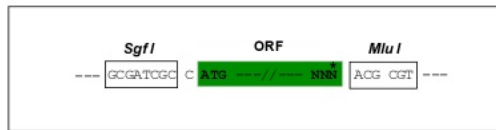
MDLDQLDLNPRITAAVKRGRKLSVKEILCYSGPDLQRLTGLPSHDVQCLLRAASLHLRGSRVLSALHLFQ
 QKESFPEQHQLSLGCPVLDQFLGGPLLEGITGLAGCSSAGKTQLALQLCLAVQFPRQYGGLEAGAVYI
 CTEDAFPSKRLWQLIAQQRRLRTDAPEELIEKIRFSNHIFIEHAADVDTLLECVSKKVPILLSRGMARLV
 VVDSIAAPFRCEFHLQASAIRAKLLLSL GATLRRLLSSTFRSPVLCINQVTD MVEDQQSVSRSLGASEERL
 SPALGITWANQLLMRLMVDRTHEDDVTTGLPRSPVRTLRVLFAPHLPLSSCCYTVSGEGIRGMPGTQSY

TRTRPLE - GFP Tag - V

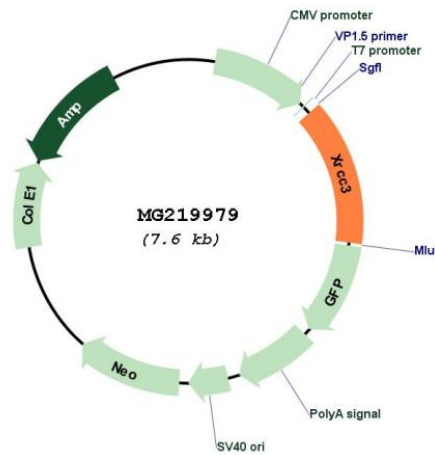
Restriction Sites: SgfI-MluI

Cloning Scheme:

Cloning sites used for ORF Shutting:



Plasmid Map:



ACCN: NM_028875

ORF Size: 1047 bp

OTI Disclaimer:	The molecular sequence of this clone aligns with the gene accession number as a point of reference only. However, individual transcript sequences of the same gene can differ through naturally occurring variations (e.g. polymorphisms), each with its own valid existence. This clone is substantially in agreement with the reference, but a complete review of all prevailing variants is recommended prior to use. More info
OTI Annotation:	This clone was engineered to express the complete ORF with an expression tag. Expression varies depending on the nature of the gene.
Components:	The ORF clone is ion-exchange column purified and shipped in a 2D barcoded Matrix tube containing 10ug of transfection-ready, dried plasmid DNA (reconstitute with 100 ul of water).
Reconstitution Method:	<ol style="list-style-type: none">1. Centrifuge at 5,000xg for 5min.2. Carefully open the tube and add 100ul of sterile water to dissolve the DNA.3. Close the tube and incubate for 10 minutes at room temperature.4. Briefly vortex the tube and then do a quick spin (less than 5000xg) to concentrate the liquid at the bottom.5. Store the suspended plasmid at -20°C. The DNA is stable for at least one year from date of shipping when stored at -20°C.
RefSeq:	NM_028875.3 , NP_083151.1
RefSeq Size:	2422 bp
RefSeq ORF:	1050 bp
Locus ID:	74335
UniProt ID:	Q9CXE6
Cytogenetics:	12 F1
Gene Summary:	This gene encodes a member of the RecA/Rad51-related protein family that participates in homologous recombination to maintain chromosome stability and repair DNA damage. This gene functionally complements Chinese hamster irs1SF, a repair-deficient mutant that exhibits hypersensitivity to a number of different DNA-damaging agents and is chromosomally unstable. Allelic variants in the human gene are associated with susceptibility to breast cancer and cutaneous malignant melanoma. [provided by RefSeq, Sep 2015]