

## Product datasheet for **MG219961**

### Ttc3 (NM\_009441) Mouse Tagged ORF Clone

#### Product data:

Product Type:	Expression Plasmids
Product Name:	Ttc3 (NM_009441) Mouse Tagged ORF Clone
Tag:	TurboGFP
Symbol:	Ttc3
Synonyms:	2610202A04Rik; AA409221; D16lum21; D16lum21e; mKIAA4119; TPRD
Mammalian Cell Selection:	Neomycin
Vector:	pCMV6-AC-GFP (PS100010)
E. coli Selection:	Ampicillin (100 ug/mL)
ORF Nucleotide Sequence:	>MG219961 representing NM_009441 Red=Cloning site Blue=ORF Green=Tags(s)

TTTTGTAATACGACTCACTATAGGGCGCCGGGAATTCGTCGACTGGATCCGGTACCGAGGAGATCTGCC  
GCC**CGATCGCC**

ATGGATGACTTTGCTGAGGGAGGTCTCAGTTTGGCAGATGATATCTTACTGGAAGATTACCCCTATGAGG  
ATGACTGTATCTGTACTCCTGACTTTACCCTGACGATTATGTTTCGAGTAACCCAGCTTTACTATGAAGG  
CGTGGGTATGCAATATAAAGATTATGCCCAAAGTGAGAAAAATTTAGAATATGACATCTGCAATATCTGG  
TGCAGTAAGCCACTCTCCATCTGCAAGATTACTGTGATGCCATTAAGCTGTACATCTTCTGGCCACTTC  
TTTTTCAACATCAACACAGTTCTATAATATCAAGATTGCACCCCTGTGTAGAAGCCATCCGTTCTCGTGC  
TGCTGAGATAAGTTTGAAGAAATTACAACATCTTGAGTTGATGGAAGACATTGTGGATTTGGCAAAGAAA  
GTTGCAAATGATTCATTCTTATTGAAGCCTTATTGAAAATTGGTTATAAAATAGAAAATAAAATCTTGG  
CAATGGAAGATGCTTTAAATTGGATAAAAATACACGGGTGATGTAACAATTCTACCTAAATAGGATCAGT  
TGACAATTGCTGGCCATGCTAAGTATTTCTTTACTGAATATAAGTACCATATTACTAGAGTTGTAACCT  
GAAAATTGCAACTTGCTAGAAGAATTTAGAAGGCATAGTTGCATGCAGTGTGTGAAGCAAGGAGAAGTCA  
TGAAAATGAGAGGAAATGAAGAGTTCTCAAAGGAAAAGTTGAAATAGCTGTTATTTATTACACCAGAGC  
CATTGAATATAGACCTGAAAACCATCTTCTTTATGGTAACCGAGCTCTCTGTTTTCTCGTATGGGGCAG  
TTTAGAAATGCATTAGCGATGGAAAGAGGGCCATTGTTTTGAAGAACACCTGGCCAAAGGGTCATTATC  
GTTATTGTGATGCTCTTTGTATGCTGGGGGAATATGACTGGGCCCTGCAAGCAAACATAAAAGCTCAAAA  
ACTCTGTAAAAATGACCCCTGAGGGAATCAAGGATCTAATTCAGCAGCATGTAAAGTTACAAAAACAATA  
GAAGACCTACAAGGTCGGACATCAAATAAGAATCCAATTAAGCTTTTTATGAAAGCAGGGCTTACATAC  
CTAGAACTCATCAGCACCTGCTTTTAGGACATCACTTAACTTTGTGAAAACAGAAAGAGGTTTCAGAAA  
AACTAAGTACAAAATGGCAAATGGTGGCGATCAGAATCAAAGGTGTCAGATGAGGCTTTGAAGGGGAC  
GATTGTGACTGTCATCTGAATTTCTGCCACCTCCAAGTCAGCCTCCAAGACACAAGGAAAACAAAAAT  
CACGAAAACATGAATCAGAAAAGCCAGTTCTAATTCAGAAGTGAGTTTACAAGTAGATTTGAAAAGCAT  
TTTGGAGAAACAGTTTTTCAAATCTCCAGAGCTGCACACCAGGATTTTGCTAACATCATGAAAATGCTA



AGGAGCTTGATTCAGGATGGGTACACGGCCCTGTTAGAGCAGCGCTGCCGACGCGCTGCCAGGCCTTTA  
CAGAGCTGCTCAATGGTTTAGACCCTCAGAAAAATAAGCAATTGAACCTGGCCATGATTAATTATGTATT  
AGTAGTCTATGGACTTGCCGTTTCTCCTTGGAAATAGGACGACCAGAGGAGCTGTCTGAAGCCGAAAAAC  
CAGTTTAAAGAGGATTATCGAACACTATCCCAATGAGGGGCTGGACTGCTTGGCCTACTGCCGAATAGGAA  
AAGTGTATTTGAAAAAGAAGCAGATTTCTCGAAGCTTAAATCACTTTGAAAAGGCAAAGACTTTAATTAG  
TCGTCTCCCTGGAATTCTAACTTGGCCACAAGTAATGTGATTATTGAAGAATCTAAGCCAGAAAAAGTC  
AAGGTGATGTTAGAGAAGTTTGTGAAGAATGCAAGTTTCCCCAGTGCCAGATGCTGTTTGTGTATC  
AGAAGTGCCGTGGATATTCTAAAATTCAGATTTACTTAACTGATCCAGACTTTAAGGGTTTTATACGAAT  
TAGCTGTTGCCAATACTGTAAGGTAGAATTTTCATATGAACTGCTGGAAAAAGTTAAAAACAACAATTTT  
AATGATAAAAATTGACAAGGATTTTCTACAAGGAATCTGTCTCACTCCCGATTGTGAGGGAATCATTCTA  
AGATTATCATCTACAGCAGTGGAGGTCAAGTTAAATGTGAATTTGAACACAAGGTCATAAAAAGAAAAGGT  
TCCTTCAAGACCTGTTCTGAAACAGAAATGTTCCAGCCTAGAGAAGTTAAGACTGAAAGAAGACAAAAAA  
TTGAAGAGAAAGATCCAAAAGCAAGAGGCCAAAAAAGTTAGCACAAGAAAGAAATGGAAGAGGACTTAAGAG  
AAAGCAATCCACCTAAAAATGAAGAGCCAGAAGAAACCTCAGACAGTGTCTCAGCGTTGTCAGTTTCTTGA  
TGACAGAAATCCTGCAGTGCATAAAGCAGAATGCTGACAAGATTAATCTGTTGTATTGAATACATCCACG  
CTTCTCAAAGAGCTGCTCTTGGAAAGTTCTGAGCACGGAAGACTATACAACATGCTTTTCTAGCAAAA  
ATTTTGTCCATGAAGCAGTGGACTATGTTATCGGTCACTTGATCCAAGAGAAGAACAAGAGTAAAGACACG  
GATATTTCTGCATGTTTTGAGTGAGCTTAAAGAGTTAGACCCCAAGTTGGCTCCCTGGATCCAGAGACTG  
AATAGTTTTGGCTTGGATGCCATAGGACCTTTTTCACTCGGTACGGAGCATCTCTCAAGGAGCTTGATT  
TCCACGTCGTGACTGTCTCTGGGATGAGAAGTACGGCCATAAATGGGCTCTATAGAAGGAAAGCAGCT  
TGATTACTTCTTTGAGCCAGCATCGGCAATGGAAGCAGCTGTTAATATGGCTTCTGGAAGAGCACAGG  
GACAAGTTCCGGCTTGCACAGTGCCTTAGACGAGTCTTTGATATAATGGACAGCCGATGCACGTGTA  
TAAGGAAGCAAGACAGCGATGAAATGCCGTTTGGTTGTATCAAGGTAAAAAACAAGGCAAGAAAAAGAA  
GCCAAAAGATTCAAAGCCAAATGTTAGTGGATCTGGAGCTGCATCAGTAGCACCGAGCAGTGGAGCTGTC  
ACTCCAGAAGACCATAGCAGGCGCAATTCAGATTCTGCAGGACCATTTGCAGTGCCTGACCACCTTCGGC  
AAGATGTGGAAGAATTTGAAGCTCTTTATGACCAGCACAGCAGCGAGTATGTTGTCCGAAAATAAGAAGCT  
CTGGGATATTAACCCCAAACAGAAATGTTGACTCTGTATGATTATTTCTCTCAGTTGTTGGAAGAGCAC  
GGCCCTTGGATATGAGTGACAGGATGTTCTCTGAGGAATATGAGTTCTCCCTGAAGAACTCGACAGA  
TACTGGAGAAGGCAGGAGGGCTGAAGTCGTTCTCTGGGCTGTCCTCGATTGTTGTGATCGACAAGT  
CATTGCATTGAAAAAGTTGCCTCAAGACTCAAGAAAAAAGAAAGAAGAAAAACATGAAAGCTAAAGTT  
GAAGACATTTCAAAAACAGGAGAATATTTACGAGTTAACTACCACTAAATCCAAGTCTAGGGAATTTT  
AACCAGATGTAAGTCTGAAGCACTGTCTGAGGATGTGAAGTCCATACCAGGACCTGCCACTCCTCAAC  
CCTAGCTGCGGAGGATCTGAAGGCCAGCTGGACTCTGATAGCTCTTCTGGGTCAGCTTCGGAGGACAGC  
AGACTGGAAGTGGCTCTCTGACTCTCTACACCACTCTGTGAGGATGCTTCTCCTTCCCCACGCCAG  
CTCCTGAAGAAGCCAAACCAACATACTGGGCTCAATCACACTGGTCACAGGATTTCTGCACATACCTTCC  
TTTTCAAGGATTTGGCATACCCAGCGACCAGCGTACATTAACATGGTACCTAGCCTGTCGAGTTCCT  
AGCATTACACACCTTTGGCCAACATTTCTTCTGAGTATCCAATGCAAAGATCCATGCCAGTGGTGCCAT  
CTTTTGTAGCCAGCAACAGAGCAGATGAAAATGCCGCTGCATACTTTGAGAGTCCATATCTGAATACTGA  
GCACGACTCTGGTGACCACATGGCCTCTGAAACACAGATCCTGGAGGATACTTTGGGAGTGTGTGTCAGG  
TCCCAGGGCAGCGCAGCTGATGCTGATCCAGCTCTGAGTGAGCCTGAGGGAACAGCGAACACAGTGGGA  
GCTCTGACAGCCTGTGGGAAGCTTCTCTAGAAAATGTCAGTGGAACAACAGATGCTCCAGCTGCTCCATC  
GGTTGCCATACAGGTGTCTAGGAGCATGGTACATCAGGAAGTCAACACTGAGCCGTATGAGCCGTTTGA  
ACACAGCAGGGGGACCTTTCCAGAAGGAAAAGGAGTGCCACCTACTCAGAGAGCAGCTGAAGGTAGCAT  
GTGAGAAGTGGCAGCAGATAGAAGTCAAGGAGTCAACAAGAGATCAAGGACCTGGAGGAAAAGCTGCAACG  
GCACACAGAGGAAAACAAGATCTCAAAGACGGAATTAGACTGGTCTCCTCAAGATTTGGACAGAGAGATT  
AAAAAGTGGCAACAAGAGAAAAAAGAAATCCAAGAAAGATTAAGGCCCCTGAAGAAAAAATTAAGGAGG  
TTATCAATACCAGTGAATGCCTGCCAGAAAAATGATGGATTGATAAGGAATGTGAACCATCCGGA  
CCAGTCCCTTGGATTGAGCAGTGCACACTCAGATGAGAAGACAAAAGTAGAAGAGTCTGTGAGGAAAGGG  
AAAGAGCTCTATGAAGAGAGTACCAGAGAGCCGTGGCTGCAGAGGTATCTGTTCTTGAAGAACTGGAAG  
AGCGAGAAGTGTGCAAACTACAGGGTGTGGCGTCACAATCAGAAGCCTATCTTAAAGCCTCAAGCTGAT  
GAGCAGTATTCTGCAACGATCCCGATGTGGAGTATGATATACTTTTATGGGAGTCATTTCTTCTACT  
GTAAGAGAAGAGATCGAGAGCAAAAAGTCTCAGTTTGAAGAGCATATTAAGGCCATTAAGAATGTTTCTC

GACTCAGTGACCTTTCCAGTGTGCAGCTTTCTGAGGTTTCATTTCTGGTTGTTTCGACGATCCATCCTCA  
 GTTCCTCTCTGAGTCTTCAGGCCATGAGGATCCCGGACTGGTGGCTTGTGTAGACAGCATGACTGGAGCA  
 GTCCTCAATGATCCTTACATGGACTCTGCTAGTGGCTGCCAGAGGAGGTTCCAGAACTGTCGCTGGGAT  
 CACCCACCCATCAGCCAGAAGTTACTCAACAGCTTGTAGCTCAAGGGGGCTAGCCAGGTGTCTCCATCAGA  
 ACAGAGCCCTGAGGCCGACGAGAACTATCTGGACAGGCTACTCGGTCAAGCCAGTCTCCAAAAAGCCT  
 TCCAACAGTATTATTGAACACCTGTGAGTATTTCCCATGTTATACCAGCACTGAGCTTGTGGAGAAAGT  
 TTAAGAAAGTTAGAAAACAAAACCAAGAAGCTCATTCTCGGATTAAGTATTGAGGAGATTGTGGAGAAAGT  
 GACAGAAACACATTGTGATGAGCAAAAAGAAAAGCCAAATCCAGGAAAAGACAAAGAAGACATCTGAG  
 GCTCATTCTCGGCTGCCTCTGTGGCCAAAGTCTCCAGAGTCCACCCTTGGCAGCTGCTGGACCATCAGCTA  
 GAACCAAAGGCCAGAAAAAGATGATGTCCTGCACCAGATGAAATTCCTGTGAGATATGCCATGAAAT  
 ATTCAGTCAAAAAACATGCGTGTGCTAAAATGTGGGCACAAGTTTACAAAAGGGTCTTTAAGCAGTGG  
 CTGAAAGGGCAGAGCACGTGCCACCTGTGGCAGCAGTGACCTGCTGTGAGAAG

ACGCGTACGCGGCCGCTCGAG - GFP Tag - GTTTAA

**Protein Sequence:**

>MG219961 representing NM\_009441  
 Red=Cloning site Green=Tags(s)

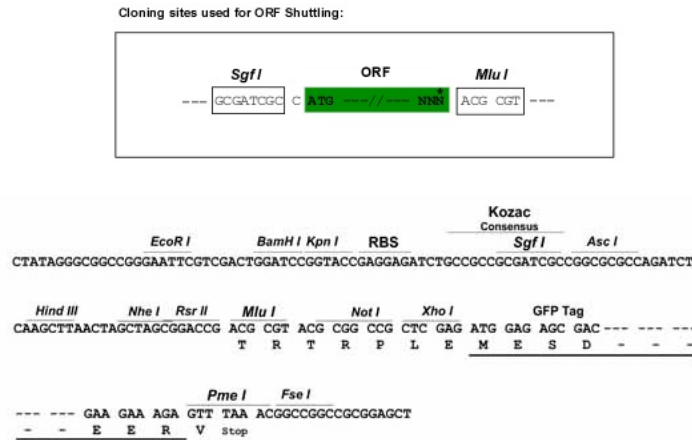
MDDFAEGLSLADDILLEDYPYEDDCICTPDFTTDDYVRVTQLYYEGVGMQYKDYAQSEKNLEYDICNIW  
 CSKPLSILQDYDAIKLYIFWPLLFQHQHSSIIISRLHPCVEAIRSRAAEISLKKLQHLELMEDIVDLAKK  
 VANDSFLIEGLLIGYKIKENKILAMEDALNWKIYTGDTVILPKLGSVDNCPMLSIFFTEYKYHITRVVT  
 ENCNLLEEFRRHSCMQCVKQELMKMRGNEEF SKEKFEI AVIYYTRAIEYRPNHLLYGNRALCFLRMGQ  
 FRNALSDGKRAIVLKNTPKGYRYCDALCMLGEYDVALQANIKAQKLCCKNDPEGIKDLIQQHVKLQKQI  
 EDLQGRTSNKNPKAFYESRAYIPRNSAPAFRTSLNFVETERGFRKTKYKMANGGDQNKVVADEALKGD  
 DCDCHPEFLPPPSQPPRHKGKQSRNNESEKPSNSEVSLQVDLKSILEKQFSKSSRAAHQDFANIMKML  
 RSLIQDGYTALLEQRCRSAAQAFTELLNGLDPQKIKQLNLMINYL VVYGLAVSLLGIGRPEELSEAEN  
 QFKRIIEHYDNEGLDCLAYCGIGKVVYLLKKNRFLKALNHFEKAKTLISRLPGILTWPSTSNVIEESKPEKV  
 KVMLEKFVEECKFPVPDAVCCYQKCRGYSKIQIYL TDPDFKGFIRISCCQYCKVEFHMCWKKLKTTF  
 NDKIDKDFLQGICTPDCEGIIISKII IYSSGGQVKCEFEHKVIEKEVPSRPVLKQKCSSLEKLRKEDKK  
 LKRKIQKQEAKKLAQERMEEDLRESNPPKNEEPEETSDSAQRCQFLDDRILQCICKQNAKIKSVLNTST  
 LLKELLSWKVLTEDYTTCSKNFVHEAVDYVIGHLIQEKNRVKTRIFLHVLSELKELDPKLAPWIQRL  
 NSFGLDAIGPFFTRYGASLKELDHFVVTVLWDEKYGHKLGSIQEGQLDYFFEPASAMEARCLIWLLLEHR  
 DKFPALHSALDEFFDIMDSRCTLVRKQDSDEMPFGCIVKKNKGGKKPKDSKPMLVSGAASVAPSEAV  
 TPEDHSRRNSDSAGPFAVPDHLRQDVEEFALYDQHSSEYVVRNKKLWDINPKQKSTLYDYFSQLLEEH  
 GPLDMSDRMFSEEYFFPEETRIQLEKAGGLKSFLLGCPRFVVIDNCIALKKVASRLKKRKKKNMKAKV  
 EDISKTGEYLRVKLPLNPTAREFQPDVKSEALSEDVKSIPGPADSSTLAAEDLKAQLDSDSSSGSASEDS  
 RLEVASPDSPPTL CEDASPSPTAPEEAKPTYWAQSHLVTGFCTYLPFQGFGITQRPAYINMVPSLSQFT  
 SIYTPLANISSEYPMQRSMPVVPFVASNRADENAAA YFESPNL NTEHDSGDHMASETQILEDTLGVCVR  
 SQGSAADADPALSEPEGNEHSGSSDSLWEASLENSGTTDAPAAPSVAIQVSRSMVHQEVNTEPEPFE  
 TQQGDL SQKEKECHLLREQLKVACENCEQIELRSSQEIKDLEEKLQRHTEENKISKTELDFWLQDLREI  
 KKWQEKKEIQERL KALKKKIKKVVINTSEMPAQKNDGFDKECEPHDQSLGFSSALTDEKTKVEESVRKG  
 KELYEEHQRAVAAEVSVLENWKEVCKLQGVASQSEAYLKSLLKMSDSSATYPDVEYDILSWESFLST  
 VREEIESKKSQFEEHIKAIKNGSRLSDLSSVQLSEVSPFGCSTIHPQFLSESSGHEDPGLVACVDSMTGA  
 VLNDPYMDSASGCPPEEPEL SLGSPHQPEVTQLELKGASQVSPSEQSPAEDEKLSGQATRSSQSPKPKP  
 SNSIEHL SVIFPCYTSTELAGFIKKVRNKTNSF SGLTIEEIVEKVTEHIVDEQKKKPNPGKDKTSE  
 AHSAA SVAKSSQSPPLAAGPSARTKGQKDDVPAPDGNSEICHEIFKSKNMRVLKCGHKFHKGCFKQW  
 LKGQSTCPTCGSSDLLSEE

TRTRPLE - GFP Tag - V

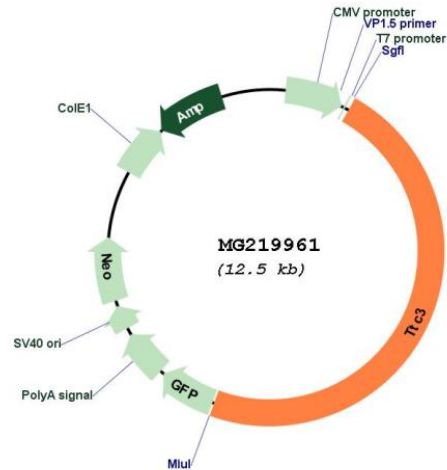
**Restriction Sites:**

SgfI-MluI

Cloning Scheme:



Plasmid Map:



ACCN: NM\_009441

ORF Size: 5937 bp

OTI Disclaimer: The molecular sequence of this clone aligns with the gene accession number as a point of reference only. However, individual transcript sequences of the same gene can differ through naturally occurring variations (e.g. polymorphisms), each with its own valid existence. This clone is substantially in agreement with the reference, but a complete review of all prevailing variants is recommended prior to use. [More info](#)

<b>OTI Annotation:</b>	This clone was engineered to express the complete ORF with an expression tag. Expression varies depending on the nature of the gene.
<b>Components:</b>	The ORF clone is ion-exchange column purified and shipped in a 2D barcoded Matrix tube containing 10ug of transfection-ready, dried plasmid DNA (reconstitute with 100 ul of water).
<b>Reconstitution Method:</b>	<ol style="list-style-type: none"><li>1. Centrifuge at 5,000xg for 5min.</li><li>2. Carefully open the tube and add 100ul of sterile water to dissolve the DNA.</li><li>3. Close the tube and incubate for 10 minutes at room temperature.</li><li>4. Briefly vortex the tube and then do a quick spin (less than 5000xg) to concentrate the liquid at the bottom.</li><li>5. Store the suspended plasmid at -20°C. The DNA is stable for at least one year from date of shipping when stored at -20°C.</li></ol>
<b>RefSeq:</b>	<u><a href="#">NM_009441.2</a></u> , <u><a href="#">NP_033467.2</a></u>
<b>RefSeq Size:</b>	7295 bp
<b>RefSeq ORF:</b>	5940 bp
<b>Locus ID:</b>	22129
<b>Cytogenetics:</b>	16 55.18 cM