

Product datasheet for **MG219914**

Cacng5 (NM_080644) Mouse Tagged ORF Clone

Product data:

Product Type: Expression Plasmids
Product Name: Cacng5 (NM_080644) Mouse Tagged ORF Clone
Tag: TurboGFP
Symbol: Cacng5
Mammalian Cell Selection: Neomycin
Vector: pCMV6-AC-GFP (PS100010)
E. coli Selection: Ampicillin (100 ug/mL)
ORF Nucleotide Sequence: >MG219914 representing NM_080644
Red=Cloning site Blue=ORF Green=Tags(s)

TTTTGTAATACGACTCACTATAGGGCGGCCGGAATTCGTCGACTGGATCCGGTACCGAGGAGATCTGCC
GCC**CGATCGCC**

ATGAGCGCCTGTGGGAGGAAGGCCCTGACCCTGCTGAGCAGCGTCTTTGCCGTCTGCGGCCTGGGGCTGC
TGGGTATCGCGGTCAGCACGGACTACTGGCTCTACCTGGAAGAAGGCATAATCCTCCCACAGAACCAGAG
CACAGAGGTCAAGATGTCCCTGCACTCGGGCCTCTGGCGGTCTGCTTCTCGCTGGTGAGGAGCGAGGA
CGCTGTTTTACCATAGAGTATGTGATGCCATGAACTCCAGATGACGTCAGAATCCACTGTCAATGTTCT
TAAAAATGATTTCGCTCAGCCACGCGTTCCCTCGTCAGCCTCTTCTCATGTTTCATTGGGTTTATCCT
GAGCAACATCGGGCACATCCGTCGACCGACCATACTGGCCTTTGTCTCCGGCATCTTCTTTATCCTC
TCTGGCCTCTCTTGTGGTGGCCTGGTGTACATCTCCAGCATCAATGACGAGATGCTCAACAGAA
CCAAGGATGCAGAGACCTATTTCAACTACAAGTATGGATGGTCATTTGCCTTTGCTGCCATCTCCTTCT
CTTAACAGAGAGTCTGGGGTGTGTCTGTGTACCTGTTTCATGAAGAGGTAACTGCTGAGGACATGTAC
AGACCTCACCCAGGCTTCTACCGGCCACGCTGAGCAACTGCTCCGATTACTCTGGCCAGTTTCTACATC
CAGATGCCTGGATCCGGGGCCGAGCCCTCGGACATCTCCAGCGACGCCTCGCTACAGATGAACAGCAA
CTACCCAGCTTTGCTCAAGTCCCAGACTATGACCAGATGTCATCATCTCCCTGC

ACGCGTACGCGGCCGCTCGAG - GFP Tag - GTTTAA



[View online »](#)

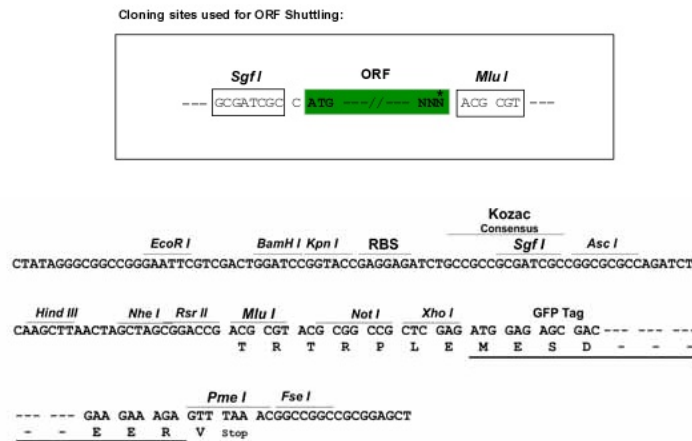
Protein Sequence: >MG219914 representing NM_080644
 Red=Cloning site Green=Tags(s)

MSACGRKALTLLSSVFVAVCGLLGLGIAVSTDYWLYLEEGIIILPQNQSTEVKMSLHSGLWRCVFLAGEERG
 RCFTIEYVMPMNSQMTSESTVNLKMIKRSATPFPLVSLFFMFIGFILSNIGHIRPHRTILAFVSGIFFIL
 SGLSLVGLVLYISSINDEMLNRTKDAETYFNKYGWSFAFAAISFLLTESAGVMSVYLFMKRYTAEDMY
 RPHPGFYRPRLSNCSDYSGQFLHPDAWIRGRSPSDISSDASLQMNSNYPALLKCPDYDQMSSSPC

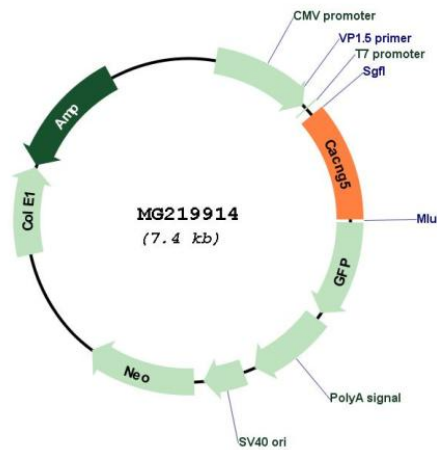
TRTRPLE - GFP Tag - V

Restriction Sites: SgfI-MluI

Cloning Scheme:



Plasmid Map:



ACCN: NM_080644

ORF Size: 825 bp

OTI Disclaimer:	The molecular sequence of this clone aligns with the gene accession number as a point of reference only. However, individual transcript sequences of the same gene can differ through naturally occurring variations (e.g. polymorphisms), each with its own valid existence. This clone is substantially in agreement with the reference, but a complete review of all prevailing variants is recommended prior to use. More info
OTI Annotation:	This clone was engineered to express the complete ORF with an expression tag. Expression varies depending on the nature of the gene.
Components:	The ORF clone is ion-exchange column purified and shipped in a 2D barcoded Matrix tube containing 10ug of transfection-ready, dried plasmid DNA (reconstitute with 100 ul of water).
Reconstitution Method:	<ol style="list-style-type: none">1. Centrifuge at 5,000xg for 5min.2. Carefully open the tube and add 100ul of sterile water to dissolve the DNA.3. Close the tube and incubate for 10 minutes at room temperature.4. Briefly vortex the tube and then do a quick spin (less than 5000xg) to concentrate the liquid at the bottom.5. Store the suspended plasmid at -20°C. The DNA is stable for at least one year from date of shipping when stored at -20°C.
RefSeq:	NM_080644.3 , NP_542375.1
RefSeq Size:	3678 bp
RefSeq ORF:	828 bp
Locus ID:	140723
UniProt ID:	Q8VHW4
Cytogenetics:	11 E1
Gene Summary:	Regulates the gating properties of AMPA-selective glutamate receptors (AMPA receptors). Modulates their gating properties by accelerating their rates of activation, deactivation and desensitization. Displays subunit-specific AMPA receptor regulation. Shows specificity for GRIA1, GRIA4 and the long isoform of GRIA2. Thought to stabilize the calcium channel in an inactivated (closed) state (By similarity).[UniProtKB/Swiss-Prot Function]