

Product datasheet for **MG219901**

Xkr4 (NM_001011874) Mouse Tagged ORF Clone

Product data:

Product Type:	Expression Plasmids
Product Name:	Xkr4 (NM_001011874) Mouse Tagged ORF Clone
Tag:	TurboGFP
Symbol:	Xkr4
Synonyms:	AY534250; Gm210; mKIAA1889; XRG4
Mammalian Cell Selection:	Neomycin
Vector:	pCMV6-AC-GFP (PS100010)
E. coli Selection:	Ampicillin (100 ug/mL)



[View online »](#)

ORF Nucleotide Sequence:

>MG219901 representing NM_001011874
 Red=Cloning site Blue=ORF Green=Tags(s)

TTTTGTAATACGACTCACTATAGGGCGGCCGGAATTCGTCGACTGGATCCGGTACCGAGGAGATCTGCC
 GCC**CGGATCGCC**

ATGGCCGCTAAGTCAGACGGGAGGCTGAAGATGAAGAAGAGCAGCGACGTGGCGTTCACCCCGCTGCAGA
 ACTCGGACAATTCGGGCTCTGTGCAAGGACTGGCTCCAGGCTTGCCTCGGGTCCGGAGCCGAGGACAC
 GGAGGCGGCCGGAGGCGGCTGCTGCCCGAGCGCGGTGGCTGCTCGCGCTGCTGTGCTGCTGCGGGG
 AGCGGGGCTCGGCGGGCTCGGGCGGCTCGGGCGGCGGCGGGGAGCGGGGCGGGCTCTGCGGCGC
 TGTGCCTGCGCTGGGAGGAGCAGCGCGTTACTCGCTGTGGGACTGCCTCTGGATCTGGCCCGCT
 GGCCGTGACTTCGCGGATGTGGAAACGGACATCTGGCTCGCGGTGGACTACTACCTGCTGGCCAGCGC
 TGGTGGTTTGGGCTCACCTCTTCTTCTGTTGCTGGGCTCCCTTCTGTGCAAGTTCAGCTTCCGCT
 GGTGTGTCATGATTTACAGCAGGAGGACAGCTCCAGCACCACCTCCAGCTGCCAGCAGCTGGAGC
 AGATTGAAGACGGTGGTCAGCAGTGGGCTGCGAGCCGGGAAGCGAGGTTTCCTCCACGCCGACAG
 AGGCAAGCATCCAACGCCAGCAAGAGCAACATCGCCGCCACCAACAGCGGAGCAACAGCAACGGGGCCA
 CCCGGACAGCGCAACACAGGCTGCGTCTGCTCCTTTTGCATCTGGCTCCTGCAGTCACTCATCCA
 CATCTTGACAGTTGGGCAATCTGGAGGATTTGCACACAATACTTAGGTATCCGGAGCCGGCAGAGT
 GGGGAGAGCGGACGGTGGCGGTTTTACTGGAAGATGGTGTACGAGTATGCAGATGTGAGCATGCTGCATC
 TGCTAGCCACTTTTCTGAAAAGTCTCCACAATTGGTCTGCAGCTCTGCATTATTGTACAGACTCACAG
 CTTACAGGCCCTCAAGGTTTACAGCAGCAGCCTCCCTGTGTCTTGGCTTGGGCCCTAGCCTCCTAC
 CAGAAGGCTCTTCGGGACTCCCGAGATGACAAAAAGCCCATCAGCTACATGGCTGCATCATTAGTTCT
 GCTGGCATTCTCACCATCGCTGCCAGGTCATCACATTCGCCCTCTTGCCTCGGTTTTCCAGCTGTA
 TTTTGGGATATTTATTGCTCCTCATTGGTGCATCATGACTTTCTGGATTGCCACTGTGAGACAGAATTC
 TGTATACCAAATGGGAAGAGATTGTGTTTGCATGTTGGTGGGATCATCTACATCTTCAGTTGGTTCA
 ATGTCAAGGAAGGCAGGACACGCTGCAGGCTGTTCACTTTACTATTTTGAATCCTTTTGGAAAATACAGC
 CTTGAGTGCCTCTGGTACCTCTACAAAGCTCCCAGATTGCAGATGCATTTGCCATCCCTGCATTGTGC
 GTGTTTTTTCAGCAGCTTTTTAACAGGTGTTGTTTTATGCTGATGTACTATGCCTTCTTTCATCCCAATG
 GGCCAGATTTGGGCAATACCAAGTTGTGCTTGTGATGATCCAGCCACTGCCTTCTCTGCTCCAGA
 AGTAGCCACAAGCACACTACGGTCCATCTCAACAACCGCAGTGTGCCAGTGACCGTGATCAGAAATTT
 GCAGAGCGGGATGGATGTGTACCTGTGTTCAAGTGAAGCAACTGCACCACCCACCCCATCATCTCGAC
 CACCACGATTGAAGAATCAGTCATTAATAATTGACCTGTTCCAGGAATAGATATCCAGCATGGGAGAGACA
 TGTGTTAGATCGAAGCCTGAGAAAGGCCATTTTAGCCTTTGAATGTTCCCATCTCCTCCAAGGCTGCAG
 TACAAGGATGATGCCCTTATTCAGGAGAGGCTGGAATATGAAACCACTTTA

ACGCGTACGCGGCCGCTCGAG - GFP Tag - GTTTAA

Protein Sequence:

>MG219901 representing NM_001011874
 Red=Cloning site Green=Tags(s)

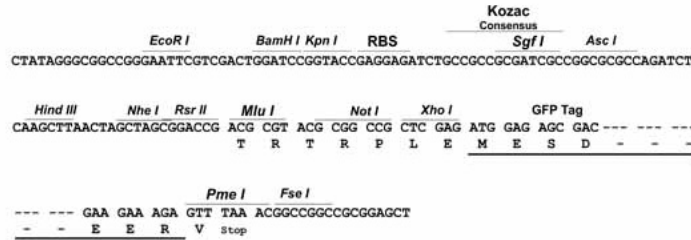
MAAKSDGRLKMKKSSDVAFTPLQNSDNGSVQGLAPGLPSGSAEDTEAAGGGCCPDGGGCSRCCCCGAG
 SGGGAGSGGGGGGSGGAGSAAALCLRLGREQRRYSLWDCLWILAAVAVYFADVGTDIWLAVDYYLRGQR
 WWFGLTLFFVVLGSLSVQVFSFRWFVHDFSTEDSSTTTTSSCQQPGADCKTVVSSGSAAGEGEVVPSTPQ
 RQASNASKSNIAATNSGNSNGATRTSGKHSASCSFCIWLLQSLIHILQLGQIWRYLHTIYLGIRSRQS
 GESGRWRFYWKMYEYADVSMHLHLLATFLESAPQLVLQLCIIVQTHSLQALQGFTAAASLVSLAWALASY
 QKALRDSRDDKPKISYMAVIIQFCWHFFIAARVITFALFASVFQYFGIFIVLHWCIMTFWIVHCETEF
 CITKWEIIVFDMVVGIIYIFSWFNVKEGRTRCRLFIYYFVILLENALSALWYLKAPQIADAFIAPALC
 VVFSSFLTGVVFMMLYYAFFHPNGPRFGQSPSCACDDPATAFSLPPEVATSTLRSISNNRSVASDRDQKF
 AERDGCVPVFQVRPTAPPTPSSRPPRIEESVIKIDLFNRNYPAWERHVLDRSLRKAILAFECSPSPRLQ
 YKDDALIQRLEYETTL

TRTRPLE - GFP Tag - V

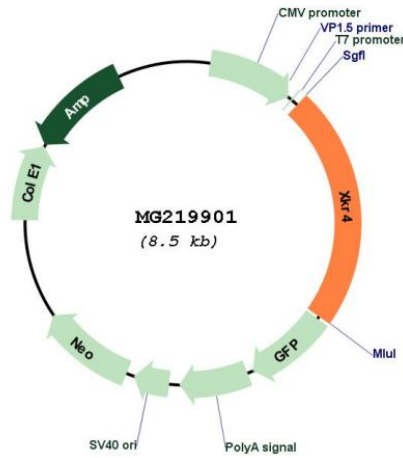
Restriction Sites: Sgfl-MluI

Cloning Scheme:

Cloning sites used for ORF Shutting:



Plasmid Map:



ACCN: NM_001011874

ORF Size: 1941 bp

OTI Disclaimer:	The molecular sequence of this clone aligns with the gene accession number as a point of reference only. However, individual transcript sequences of the same gene can differ through naturally occurring variations (e.g. polymorphisms), each with its own valid existence. This clone is substantially in agreement with the reference, but a complete review of all prevailing variants is recommended prior to use. More info
OTI Annotation:	This clone was engineered to express the complete ORF with an expression tag. Expression varies depending on the nature of the gene.
Components:	The ORF clone is ion-exchange column purified and shipped in a 2D barcoded Matrix tube containing 10ug of transfection-ready, dried plasmid DNA (reconstitute with 100 ul of water).
Reconstitution Method:	<ol style="list-style-type: none">1. Centrifuge at 5,000xg for 5min.2. Carefully open the tube and add 100ul of sterile water to dissolve the DNA.3. Close the tube and incubate for 10 minutes at room temperature.4. Briefly vortex the tube and then do a quick spin (less than 5000xg) to concentrate the liquid at the bottom.5. Store the suspended plasmid at -20°C. The DNA is stable for at least one year from date of shipping when stored at -20°C.
RefSeq:	NM_001011874.1 , NP_001011874.1
RefSeq Size:	3652 bp
RefSeq ORF:	1944 bp
Locus ID:	497097
UniProt ID:	Q5GH67
Cytogenetics:	1 A1