

Product datasheet for **MG219891**

Akirin2 (NM_001007589) Mouse Tagged ORF Clone

Product data:

Product Type: Expression Plasmids
Product Name: Akirin2 (NM_001007589) Mouse Tagged ORF Clone
Tag: TurboGFP
Symbol: Akirin2
Synonyms: 2700059D21Rik; AA114675; AA522011; Akirin-2; AU019887
Mammalian Cell Selection: Neomycin
Vector: pCMV6-AC-GFP (PS100010)
E. coli Selection: Ampicillin (100 ug/mL)
ORF Nucleotide Sequence: >MG219891 representing NM_001007589
 Red=Cloning site Blue=ORF Green=Tags(s)

TTTTGTAATACGACTCACTATAGGGCGCCGGAATTCGTCGACTGGATCCGGTACCGAGGAGATCTGCC
GCC**CGATCGCC**

ATGGCGTGCAGCCACTCTGAAAAGGACTCTGGATTTGACCCGCTGCTGAGCCCCGCATCTCCGAAGC
GGAGGCGGTGCGCGCCTTTGTCGGCGCCGGCTTCGGCTGCCGCCTCCCTGCCGCCGCCACCGCCGCCG
CGCCGCTCGGCCGCGCCGCTCGCCGAGAAGTATCTCGGATGGAGCCTTCCCCTTCGGCGACGTC
TCTTCCCGCTCACCACAGAACAATTCTGTACAACATAAAACAGGAATATAAACGCATGCAGAAGAGAA
GACATTTAGAAGCTAGTTTTCAGCAGGCAGATCCAGTTGACTTCCGATTCACAGCCACATGCATTCT
CATCAGTGGACCAGCATCACCAGGACTTCATCTGCAACATCCTCACCATTAAGAAAGAACAGCCCTTA
TTTACTCTAAGGCAGTTGGAATGATCTGTGAACGTTTGTGAAAGAACGGGAAGAGAAAGTTTCGAGAAG
AATATGAAGAAATACTGAATACAAACTTGCAACAATATGATGCTTTTGTGAAGTTTACGCATGATCA
GATAATGCGCGATATGGAGAACAGCCTGCTAGTTATGTTTCA

ACGCGTACGCGGCCGCTCGAG - GFP Tag - GTTTAA

Protein Sequence: >MG219891 representing NM_001007589
 Red=Cloning site Green=Tags(s)

MACGATLKRTLDFDPLLSPASPKRRRCAPLSAPASAAASPAAATAAAAASAAAASPKYLRMESPFQDV
SSRLTTEQILYNIKQEYKRMQRRHLEASFQQADPGCTSDSQPHAFLLISGPASPGTSSATSSPLKKEQPL
FTLRQVMICERLLKEREKVVREYEEILNNTKLAEQYDAFVKFTHDQIMRRYGEQPASYVS

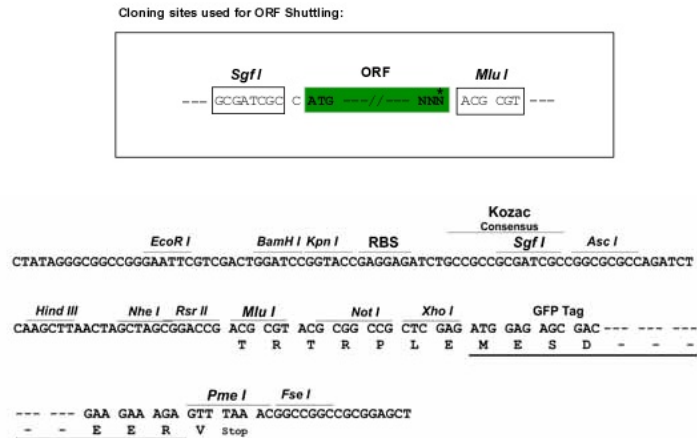
TRTRPLE - GFP Tag - V

Restriction Sites: SgfI-MluI

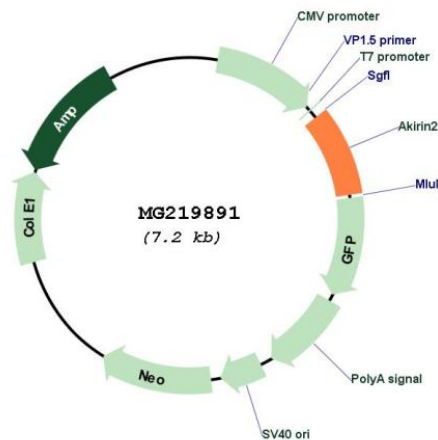


[View online »](#)

Cloning Scheme:



Plasmid Map:



- ACCN:** NM_001007589
- ORF Size:** 603 bp
- OTI Disclaimer:** The molecular sequence of this clone aligns with the gene accession number as a point of reference only. However, individual transcript sequences of the same gene can differ through naturally occurring variations (e.g. polymorphisms), each with its own valid existence. This clone is substantially in agreement with the reference, but a complete review of all prevailing variants is recommended prior to use. [More info](#)
- OTI Annotation:** This clone was engineered to express the complete ORF with an expression tag. Expression varies depending on the nature of the gene.
- Components:** The ORF clone is ion-exchange column purified and shipped in a 2D barcoded Matrix tube containing 10ug of transfection-ready, dried plasmid DNA (reconstitute with 100 ul of water).

Reconstitution Method:

1. Centrifuge at 5,000xg for 5min.
2. Carefully open the tube and add 100ul of sterile water to dissolve the DNA.
3. Close the tube and incubate for 10 minutes at room temperature.
4. Briefly vortex the tube and then do a quick spin (less than 5000xg) to concentrate the liquid at the bottom.
5. Store the suspended plasmid at -20°C. The DNA is stable for at least one year from date of shipping when stored at -20°C.

RefSeq: [NM_001007589.3](#), [NP_001007590.2](#)

RefSeq Size: 1729 bp

RefSeq ORF: 606 bp

Locus ID: 433693

UniProt ID: [B1AXD8](#)

Cytogenetics: 4 A5

Gene Summary: Forms a complex with YWHAB that acts to repress transcription of DUSP1 (By similarity). Required for embryonic development and the innate immune response. Downstream effector of the Toll-like receptor (TLR), TNF and IL-1 beta signaling pathways leading to the production of IL-6.[UniProtKB/Swiss-Prot Function]