

Product datasheet for **MG219866**

Anks1b (NM_001128086) Mouse Tagged ORF Clone

Product data:

Product Type:	Expression Plasmids
Product Name:	Anks1b (NM_001128086) Mouse Tagged ORF Clone
Tag:	TurboGFP
Symbol:	Anks1b
Synonyms:	AIDA-1b; C030032C09Rik; E530015N03Rik; ENSMUSG00000078431; Gm1555; Gm10937
Mammalian Cell Selection:	Neomycin
Vector:	pCMV6-AC-GFP (PS100010)
E. coli Selection:	Ampicillin (100 ug/mL)
ORF Nucleotide Sequence:	>MG219866 representing NM_001128086 Red=Cloning site Blue=ORF Green=Tags(s)

TTTTGTAATACGACTCACTATAGGGCGGCCGGAATTCGTCGACTGGATCCGGTACCGAGGAGATCTGCC
GCC**CGATCGCC**

ATGGGGAAGGACCAGGAGCTGCTGGAAGCTGCTCGTACTGGCAATGTGGCTCTGGTGGAGAACTCCTAT
CTGGCAGGAAAGGAGGGATCCTGGTGGTGGATCCGGACCTCTGCCCTGTCTAATCTGCTAAGCATCTG
GCGAGGCCCAATGTGAATTGCACAGACAGTTCGGGTTACACCGCTTTACACCACGCAGCCTTAAATGGA
CATAAGGACATAGTTCTCAAACCTGCTGCAGTACGAGGCATCCACCAATGTAGCAGACAACAAGGGTACT
TCCCCATTACCTGGCTGCCTGGAAGGAGACGTGGAGATTGTGAAGATCCTCATCCATCACGGACCTTC
CCATTCGGAGTCAATGAACAGAAACAACGAGAACGAAACCGCCCTCCACTGTGCAGCGCAATACGGACAC
TCGGAAGTAGTTGCGGTTCTCCTAGAGGAACTCACGGACCCACGATTAGGAACAGCAAACCTCGAAACAC
CGCTGGACTTGGCAGCACTGTACGGGCGGCTGAGGGTGGTGAAGATGATCATCAGCGCACACCCAACTT
AATGAGCTGTAACACCCGGAAGCACACGCCGCTCCACCTCGCAGCCCGCAACGGTCACAAGGCCGTGGTC
CAGGTGCTGCTGGAGGCGGGGATGGACGTGAGCTGTCAAACAGAAAAGGGGAGTGCTCTTACGAAGCGG
CTTTGTTGGGAAGGTGGATGTGGTTCGAGTTCGTTAGAAACAGGAATTGATGCCAACATAAAGGACAG
TTGCAAGATTACTTGAAGGCGCAGGAAGGTGAGCAGCAGTCTGGAAGAGCATGCTCAGGAAGATACAG
CACAAGAGACACACCTTTCGCTCCTGCGGAGTCTCCTCAAAGACTAAAAGTAAAAGTCACTGGAGA
ACTATCAAACCTCCTGGATGAAATAAACTCTGCCAAGAAAAGGACTATTCTTTGAAGATCTGTGCCAT
ACGATCTCAGACCACTACTTAGATAAATTTGAGCAAGATTTAGAGGAAGAGCTTGGGAAAAATGGAAGCC
AGAGTGTAAAGAACTTCACTACAATAAATTTGTCACCAGGAGAAGTGAAGACGAAGAGGAGGATCCAAA
CTCTTGTGGGCCACAGGACTCTGGGAAGCGCTAACTCCTTGTAAACGGATGTAGGAACCTTGGCTTTCC
ATGCTCGCACAGGAGTCTTATCCGAAGAAGAGGAATTTCCCATGGAAATGGAACCATCTGCTTCTCTGG
ACACATTCCTTCGAAAACGAGAACTTCTTTGTGAACCTGTTGACACAGCTGTACAAAGAAACCTGT
CTCCTTAGAAATCGCAAGGCACCTTCTCCGAGAAGTATAATGCCTCTGAGGTAGCAATTACTGCTCCA



[View online »](#)

GGAAGTACCATAGAAACAGCTCTACAGGCCAACACCTGACTGCTCACCTCCATCCCCAGATACTG
CCCTAAAAATATCGTAAAAGTTATCCGACCTCAGCCAAAACAACGGACATCTATTGTGCTTCTCTGGA
TTTCCAGCGAATGAATCATAACCAAGAATACTTTGAAATCAGCACATCTACAGGGTGTACCAGCTTACT
TCCAGCCCTGCTGCTAGCCCTCCACCTTCTGTGGAACCACAGAAGTCAAGAACGAGGGAGCTGAAC
ACGCAGATGATCTCTCAGCAGGAAGTACGAAACCCCAAAAGAGTATGATGCTGGGCAATTCGCAGG
CCTTCTCCATGGATCCTCTCCAGCCTGTGAGTCTCCTGAAAAATCCGTTTCATCTGTATGGGAAAAGAAAT
ACATGTGAAGATGGACCAGATGAAGCCAGTTTGGCAAACAGTCCCTTGCCTTTCAAGCAGACTCCAATAG
AAAACAACCCGGAACCTTCGGTGAAGAAAAGTTAAACCCAAAGTGGTCAGTAGAACAATTTCCACAAAAG
AAACCACCAACTTGAGAACCATACCATCGTTGGCACAAGAATGTCCAGGAGTGGATCCCGCAATGGTGAC
CAATGGGGTGTGAATCCAGGGGGCTTTGTGGAGAGAGCATGACTCTGGGGAGAATAAGGTCATTGCCTA
AAGCCTTGATCGACATGCATTTTCCAAAAATGTCTCCAAGTCCGATTCTGATCTTATTGCCTACCCCTC
CAAGGACAAAAGCGAGAGTTAACTGGAGCAAATCGTCAACTGCGGAGCGCAGTTCCAAAGATAATTCTGAG
AGAACACCTTCTTTCACATCTGAATGGGAAGAAATCGACAAAATAATGAATTCGATTGACGTTGGAATCA
ACAGTGAACCTTGAAGGGATGAATGGACCAGATGCCCTGTCCAACAGTGGGACAATGGCTGAAAGCAT
TGGGCTACCTCAGTACGAGAACCACCTGATGGCTAATGGATTTGACAGTGTACAGTTTATGGGAAGCAAT
GTTATGGAAGATCAGGATTTGTTGGAAATGGAATCCTTAACTCTGGCCACAGACAGAGAATTCTACAAG
CGATCCAGCTCCTTCCAAGATGAGGCCATCGGCCATGATGGCTACCATCCCACCTCTGTAGCCGAGTG
GCTGGATTCCATTGAGCTGGGTGATTACACCAAAGCCTTTCTCATCAATGGCTACACGTCATGGACCTG
TTGAAAAAGATCTGGGAGCTTGAGCTTATTAATGTTTTAAAAATCAGTTTGATTGGCCACAGGAAACGCA
TTTTGGCATCTTTGGGAGATAGGCTGCACGACGACCCTCCACAGAAGCCCCCTCGGTCCATCACCCTCAG
GGAACCCAGTGGTAATCACACTCCTCCTCAGTTGTCTCCATCACTTAGCCAAAGCACTTACACCCTGGT
GGCTCCCTAGACGTTCTCATTATCATGCAGGGCGATGCAAGGAGGAGAAGAAATGAAAACACTTTTG
ATGATATTCCCGATCAAAGCTGGAGAGGCAGATGGCTCAGACAGGGGACTGGGGAGAACCTTCCATCAC
CTTGCGACCTCCTAATGAAGCCACAGCCTCAACTCCCGTCCAGTACTGGCAGCATCATCCGGAAAAACTC
ATCTTCCAGTCATGTGACTACAAAGCCTTTTATTTAGGTTCTATGCTGATAAAAGAGCTGAGGGGACAG
AATCAACACAGGATGCTTGTGCAAAGATGCGGGCTAACTGTCAGAAGTCTACAGAGCAAATGAAGAAAGT
CCCCACTATCATCCTTTCCGTCTCATATAAAGGAGTAAATTTATCGATGCGGCAAATAAGAATATAATC
GCCGAACATGAAATTCGTAATATCTCCTGTGCTGCCAGGACCCAGAAGACCTCTCAACATTTGCCTATA
TCACAAAAGATTTGAAGTCCAACCACCTACTGTACGTTTACTGCCTTTGATGTGAATTTAGCCTA
TGAATCATCCTGACGCTGGGACAGGCATTTGAGGTCGTTACCAACTAGCCCTACAAGCAAGAAAAGGG
GGCCATTCTCCACTCCAGAAAGCTTTGAGAACAAGCCCTCGAAACCCATCCCAAGCCCCGAGTTA
GCATTCGGAAGTCAGTGCAGATCGACCCTCTGAGCAAAAAGACTCTGGCCAATCTGCCGTGGATTGTGGA
GCCGGGGCAAGAAGCCAAGAGGGGCATTAATACCAAGTATGAAACCACGATTTTC

ACGCGTACGCGGCCGCTCGAG - GFP Tag - GTTTAA

Protein Sequence: >MG219866 representing NM_001128086
 Red=Cloning site Green=Tags(s)

```

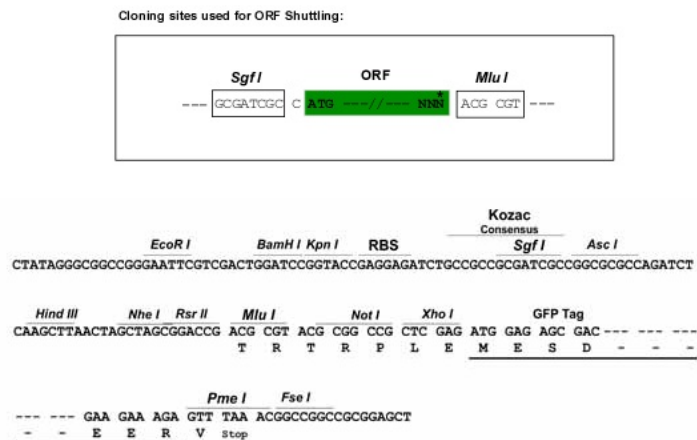
MGKDQELLEAARTGNVALVEKLLSGRKGGLGGGSGPLPLSNLLSIWRGPNVNCTDSSGYTALHHAALNG
HKDIVLKLQYEASTNVADNKGYPFIHLAAWKG DVEIVKILIIHHGSPHSRVNEQNENETALHCAAQYGH
SEVVAVLEELTDPTIRNSKLETPDLAALYGR LRVVKMII SAHPNLMSCNTRKH TPLHLAARNGHKAVV
QVLL EAGMDVSCQTEKGSALHEAALFGKVDVVRV LLETGIDANIKDSLGR TVLDILKEHPSQKSLQIATL
LQDYLEGAGRSAAVLEEHAQEDTAQETHLSSPAESPQTKSETVTGELSKLLDEIKLCQEKDYSFEDLCH
TISDHYLDNLSKISEEELGKNGSQSVRTSSTINLSPGEVEDEEEDPNSCGPTGLWEALTPCNGCRNLGFP
MLAQESYPKRNFPMEPEPSASLDTFPSENF LCELVDTA VTKKPCSLEIARAPSPRTDNASEVAITAP
GTSHRNSSTGTPDCSPSPDTALKNI VKVIRPQPKQRTSIVSSLDFQRMNHNQEYFEISTSTGCTSTFT
SSPAASPPTSSVETTEVKNEGA EHADDLSQ QEDDEPPKEYDAGQFAGLLHGSSPACESPENPFHLYGKR N
TCEDGPDEASLANSP LPFKQTP IENNPEPSVKKVKPKVVSRTIFHKNRHQLENHTIVGTRMSRSGSRNGD
QWGVNPGGFVERACTLGRIRSLPKALIDMHL SKNVSKSDSLIAYPSKDKARVNWSKSSTAERSSKDNSE
RTPSFTSEWEEIDKIMNSIDVGINSELEGMNGPRCPVQTVGQWLESIGLPQYENHLMANGFDSVQFMGSN
VMEDQDLEIGILNSGHRQRILQAIQLLPKMRPIGHDGYHPTSVAEWLDSEI LGDYTKAFLINGYTSMDL
LKKIWELELINV LKISLIGHRKRILASLGDRLHDDPPQKPPRSITLREPSGNHTPPQLSPSLSQSTYTTG
GSLDVPHIIMQGDARRRRNENYFDDIPRSKLERQMAQTGDWGEPSITLRPPNEATAS TPVQYQWHPEKL
IFQSCDYKAFYLGSMLIKELRGTESTQDACAKMRANCQKSTEQMKKVPTIILSVSYKGVKFI DAANKNII
AEHEIRNISCAAQDPEDLSTFAYITKDLKSNHHYCHVFTAFDVLNAYEIIILTLGQAFEVAYQLALQARKG
GHSSTLPESFENKPSKPIPKPRVSIRKSVQIDPSEQKTLANLPWIVEPGQEA KRGINTKYETTIF
  
```

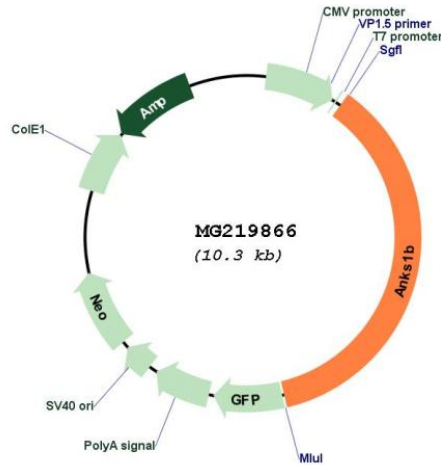
TRTRPLE - GFP Tag - V

Restriction Sites:

SgfI-MluI

Cloning Scheme:



Plasmid Map:


ACCN: NM_001128086

ORF Size: 3765 bp

OTI Disclaimer: The molecular sequence of this clone aligns with the gene accession number as a point of reference only. However, individual transcript sequences of the same gene can differ through naturally occurring variations (e.g. polymorphisms), each with its own valid existence. This clone is substantially in agreement with the reference, but a complete review of all prevailing variants is recommended prior to use. [More info](#)

OTI Annotation: This clone was engineered to express the complete ORF with an expression tag. Expression varies depending on the nature of the gene.

Components: The ORF clone is ion-exchange column purified and shipped in a 2D barcoded Matrix tube containing 10ug of transfection-ready, dried plasmid DNA (reconstitute with 100 ul of water).

- Reconstitution Method:**
1. Centrifuge at 5,000xg for 5min.
 2. Carefully open the tube and add 100ul of sterile water to dissolve the DNA.
 3. Close the tube and incubate for 10 minutes at room temperature.
 4. Briefly vortex the tube and then do a quick spin (less than 5000xg) to concentrate the liquid at the bottom.
 5. Store the suspended plasmid at -20°C. The DNA is stable for at least one year from date of shipping when stored at -20°C.

RefSeq: [NM_001128086.3](#)

RefSeq Size: 7002 bp

RefSeq ORF: 3768 bp

Locus ID: 77531

Cytogenetics: 10 C2

Gene Summary:

Isoform 2 may participate in the regulation of nucleoplasmic coilin protein interactions in neuronal and transformed cells.[UniProtKB/Swiss-Prot Function]