

Product datasheet for **MG219853**

Il3ra (NM_008369) Mouse Tagged ORF Clone

Product data:

Product Type: Expression Plasmids
Product Name: Il3ra (NM_008369) Mouse Tagged ORF Clone
Tag: TurboGFP
Symbol: Il3ra
Synonyms: CD123; CDw123; SUT-1
Mammalian Cell Selection: Neomycin
Vector: pCMV6-AC-GFP (PS100010)
E. coli Selection: Ampicillin (100 ug/mL)
ORF Nucleotide Sequence: >MG219853 representing NM_008369
 Red=Cloning site Blue=ORF Green=Tags(s)

TTTTGTAATACGACTCACTATAGGGCGCCGGGAATTCGTCGACTGGATCCGGTACCGAGGAGATCTGCC
 GCC**CGATCGCC**

ATGGCCGCCAACCTGTGGCTCATCCTGGGGCTCCTGGCATCCCCTCTTCAGATCTGGCTGCGGTCCGTG
 AGGCTCCACCCACTGCTGTGACCACGCCCATCCAGAACCTGCATATCGACCCCGCCACTACACACTGAG
 CTGGGACCCCGCCCGCGCTGACATCAGACAGGGGCTTTTGCAGGAAGGGCAGGGACATCTTTGTC
 TGGGCTGACCCCGGGCTTGCCCGCTGCTCATTCCAGTCGCTCTCCCTCTGCCATGTGACCAACTCACCG
 TCTTCTGGGGAAGGACAGGGCTGTGGCAGGATCCATCCAGTTCCCCCAGATGATGATGGCGACCACGA
 GGCCGACGCCAGGACCTGCGCTGCTGGGTGCATGAGGGGACGCTGAGCTGCCAATGGGAGCGGGTCCG
 AAAGCAACGGGTGACGTGCACTACCGGATGTTCTGGCGTGATGTGCGGCTCGGTCTGCCACAACCGCG
 AGTGTCCACACTACCACAGCCTTGATGTCAACACCGCTGGCCCGCCCTCATGGTGGCCATGAAGGCTG
 CACCTTGACCTCGACTGTCTTGGCTCCACCCCAACAGCCCTGACCTTGTCGCCAGGTACCATC
 ACCGTCAACGGCAGTGGCCGCGCTGGCCCGTGCCTGCATGGACAACACTGTGGACCTGACGCGCGCAG
 AGGTCTGGCCCGCCACGTTGACAGTGGAGTGAACGGCTCTGAGGCCATGCCCGATGGGTGCGCGG
 GAACAGATTCCACCATGGCCTCCTTGGGTACACCTGCAGGTCAACCAGAGCTCCCGCTCAGAGCCACAG
 GAATACAATGTCTCCATCCCCACTTCTGGGTCCCCAACGCTGGTGCCATCTCCTCCGGTCAAGTCGA
 GGTGAGAGGTTTACCCTCGGAAGCTCAGCAGCTGGAGCGAAGCCTGGGGCCTCGTCTGCCCCAGAGGT
 GATGCCTGTGAAGACAGCCTTGGTGACTTCAGTGCTACGGTGCTGGGGCAGGGCTCGTGGCAGCTGGG
 CTCTGCTGTGGTGGAGGAAGTCGCTGCTACCCTGTGCCACCCATTCCACGCTGCGCTGCCCT
 TGGCAGGGGAGATGGTCGTGTGGAAACAGCTCTTGAAGACTGCGAGGTGACGCTGTGACAGACGCC

ACGGTACGCGGCCGCTCGAG - GFP Tag - GTTTAA



[View online »](#)

Protein Sequence: >MG219853 representing NM_008369
 Red=Cloning site Green=Tags(s)

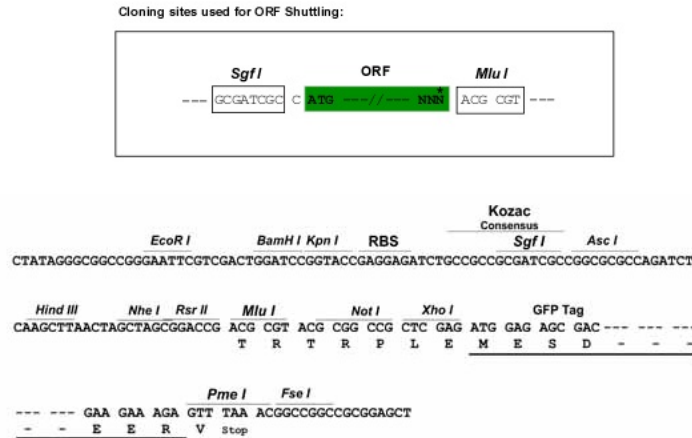
MAANLWLILGLLASHSSDLAAVREAPPTAVTTPIQNLHIDPAHYTL SWDPAPGADITTGAF CRKGRDIFV
 WADPGLARCSFQSLSLCHVTNFTVFLGKDRAVAGSIQFPDDGDHEAAAQDLRCWVHEGQLSCQW ERGP
 KATGDVHYRMFWRDVRLGPAHNRECPHYHSLDVNTAGPAPHGGHEGCTLDLDTVLGSTPNSPDLVPQVTI
 TVNGSGRAGPVPCMDNTVDLQRAEVLAPPTLTVECNSEAHARWVARNRFFHHGLLGYTLQVNQSSRSE PQ
 EYNVSIPIHFVWPNAGAISFRVKSRSEVYPRKLSSWSEAWGLVCPPEVMPVK TALVTSVATV L GAGLVAAG
 LLLWWRKSLLYRLCPPIRRLRLPLAGEMVWEPAL EDCEVTPV TDA

TRTRPLE - GFP Tag - V

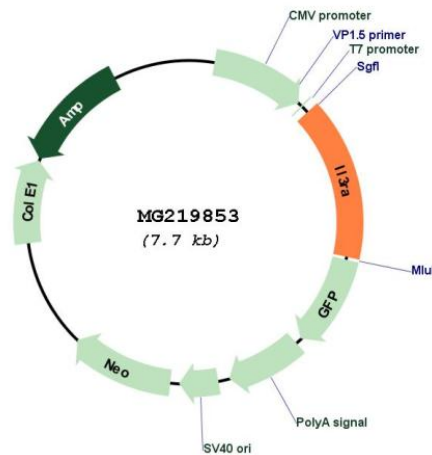
Restriction Sites:

SgfI-MluI

Cloning Scheme:



Plasmid Map:



ACCN:

NM_008369

ORF Size:	1188 bp
OTI Disclaimer:	<p>Due to the inherent nature of this plasmid, standard methods to replicate additional amounts of DNA in E. coli are highly likely to result in mutations and/or rearrangements. Therefore, OriGene does not guarantee the capability to replicate this plasmid DNA. Additional amounts of DNA can be purchased from OriGene with batch-specific, full-sequence verification at a reduced cost. Please contact our customer care team at custsupport@origene.com or by calling 301.340.3188 option 3 for pricing and delivery.</p> <p>The molecular sequence of this clone aligns with the gene accession number as a point of reference only. However, individual transcript sequences of the same gene can differ through naturally occurring variations (e.g. polymorphisms), each with its own valid existence. This clone is substantially in agreement with the reference, but a complete review of all prevailing variants is recommended prior to use. More info</p>
OTI Annotation:	This clone was engineered to express the complete ORF with an expression tag. Expression varies depending on the nature of the gene.
Components:	The ORF clone is ion-exchange column purified and shipped in a 2D barcoded Matrix tube containing 10ug of transfection-ready, dried plasmid DNA (reconstitute with 100 ul of water).
Reconstitution Method:	<ol style="list-style-type: none"> 1. Centrifuge at 5,000xg for 5min. 2. Carefully open the tube and add 100ul of sterile water to dissolve the DNA. 3. Close the tube and incubate for 10 minutes at room temperature. 4. Briefly vortex the tube and then do a quick spin (less than 5000xg) to concentrate the liquid at the bottom. 5. Store the suspended plasmid at -20°C. The DNA is stable for at least one year from date of shipping when stored at -20°C.
RefSeq:	NM_008369.1 , NP_032395.1
RefSeq Size:	1394 bp
RefSeq ORF:	1191 bp
Locus ID:	16188
UniProt ID:	P26952
Cytogenetics:	14 7.08 cM
Gene Summary:	In mouse, there are two classes of high-affinity IL3 receptors. One contains an IL3-specific beta subunit and the other contains the beta subunit also shared by high-affinity IL5 and GM-CSF receptors.[UniProtKB/Swiss-Prot Function]