

Product datasheet for **MG219818**

Ccl27a (NM_001048179) Mouse Tagged ORF Clone

Product data:

Product Type: Expression Plasmids
Product Name: Ccl27a (NM_001048179) Mouse Tagged ORF Clone
Tag: TurboGFP
Symbol: Ccl27a
Synonyms: ALP; AW558992; Ccl27; CTACK; CTAK; ESKINE; ILC; PESKY; Scya27; Scya27a
Mammalian Cell Selection: Neomycin
Vector: pCMV6-AC-GFP (PS100010)
E. coli Selection: Ampicillin (100 ug/mL)
ORF Nucleotide Sequence: >MG219818 representing NM_001048179
Red=Cloning site Blue=ORF Green=Tags(s)

TTTTGTAATACGACTCACTATAGGGCGCCGGGAATTCGTCGACTGGATCCGGTACCGAGGAGATCTGCC
GCC**CGATCGCC**

ATGTCGCGATTGAGGAGATACGAGGTGGCGCTGGAAGCGGAGGAGAGATCTACTGGGGCTGCTTCTACT
TTTTTCCTTGGCTGCGAATGTGGCGCAGGGAGCGGAGTCCGATGTCTCCAACAAGCCAGAGACTAAGTCT
GGAAGCCCCAGCCTCCCACTGAGAAGCTGGCATCCGTGGAACAAGACTAAGCAGAAGCAAGAAGCCTTG
CCTCTGCCCTCCAGCACTAGCTGCTGTACTCAGCTCTATAGACAGCCACTCCAAGCAGGCTGCTGAGGA
GGATTGCCACATGGAAGTGCAGGAGGCCGATGGGGACTGTACCTCCAGGCTGTCGTGCTTACCTGGC
TCGGCGCAGTGTCTGTGTTTCATCCCAGAACCGCAGCCTGGCTCGGTGGTTAGAACGCCAAGGGAAAAGG
CTCCAAGGGACTGTACCCAGTTAAATCTGGTACTACAAAAGAAAATGTACTCAAACCCCAACAGCAAA
AC

ACGCGTACGCGGCCGCTCGAG - GFP Tag - GTTTAA

Protein Sequence: >MG219818 representing NM_001048179
Red=Cloning site Green=Tags(s)
MSRLRRYEVALEAEEIYWGCFYFFPWLRMWRRERSPMSPTSQRLSLEAPSLPLRSWHPWNKTKQKQEAL
PLPSSTSCCTQLYRQPLSRLLRRIVHMEIQEADGDCHLQAVVLHLARRSVCVHPQNRSLARWLERQGKR
LQGTVPSSLNLVLQKKMYSNPQQQN

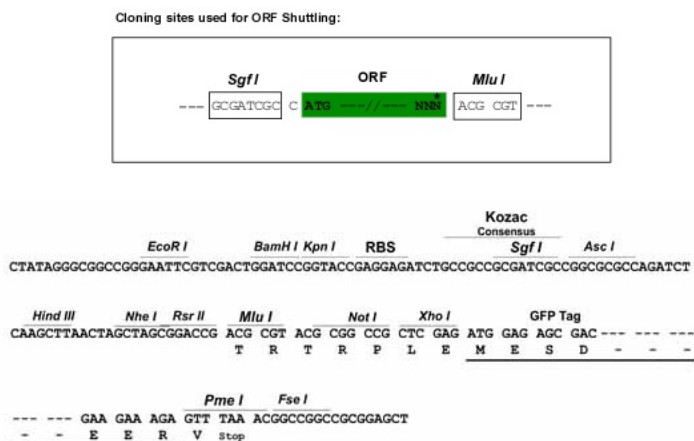
TRTRPLE - GFP Tag - V

Restriction Sites: Sgfl-MluI

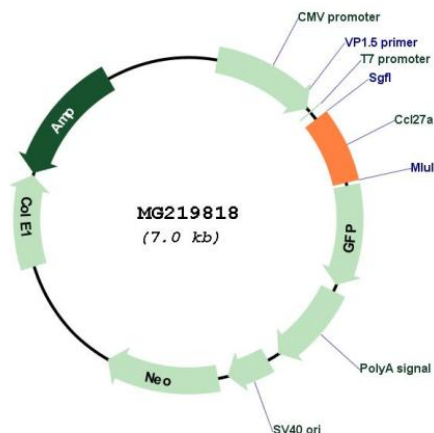


[View online »](#)

Cloning Scheme:



Plasmid Map:



ACCN: NM_001048179

ORF Size: 492 bp

OTI Disclaimer: The molecular sequence of this clone aligns with the gene accession number as a point of reference only. However, individual transcript sequences of the same gene can differ through naturally occurring variations (e.g. polymorphisms), each with its own valid existence. This clone is substantially in agreement with the reference, but a complete review of all prevailing variants is recommended prior to use. [More info](#)

OTI Annotation: This clone was engineered to express the complete ORF with an expression tag. Expression varies depending on the nature of the gene.

Components:	The ORF clone is ion-exchange column purified and shipped in a 2D barcoded Matrix tube containing 10ug of transfection-ready, dried plasmid DNA (reconstitute with 100 ul of water).
Reconstitution Method:	<ol style="list-style-type: none">1. Centrifuge at 5,000xg for 5min.2. Carefully open the tube and add 100ul of sterile water to dissolve the DNA.3. Close the tube and incubate for 10 minutes at room temperature.4. Briefly vortex the tube and then do a quick spin (less than 5000xg) to concentrate the liquid at the bottom.5. Store the suspended plasmid at -20°C. The DNA is stable for at least one year from date of shipping when stored at -20°C.
RefSeq:	<u>NM_001048179.2</u>
RefSeq Size:	594 bp
RefSeq ORF:	495 bp
Locus ID:	20301
Cytogenetics:	4 22.08 cM
Gene Summary:	Chemotactic factor that attracts skin-associated memory T-lymphocytes. May play a role in mediating homing of lymphocytes to cutaneous sites. May play a role in cell migration during embryogenesis. Nuclear forms may facilitate cellular migration by inducing cytoskeletal relaxation. Binds to CCR10.[UniProtKB/Swiss-Prot Function]