

## Product datasheet for **MG219817**

### **Nsd2 (NM\_001177884) Mouse Tagged ORF Clone**

#### **Product data:**

Product Type:	Expression Plasmids
Product Name:	Nsd2 (NM_001177884) Mouse Tagged ORF Clone
Tag:	TurboGFP
Symbol:	Nsd2
Synonyms:	5830445G22Rik; 9430010A17Rik; AW555663; C130020C13Rik; D030027O06Rik; D930023B08Rik; mKIAA1090
Mammalian Cell Selection:	Neomycin
Vector:	pCMV6-AC-GFP (PS100010)
E. coli Selection:	Ampicillin (100 ug/mL)



[View online »](#)

**ORF Nucleotide Sequence:**

>MG219817 representing NM\_001177884  
 Red=Cloning site Blue=ORF Green=Tags(s)

TTTTGTAATACGACTCACTATAGGGCGGCCGGAATTCGTCGACTGGATCCGGTACCGAGGAGATCTGCC  
 GCC**CGGATCGCC**

ATGGAATTTAGCATCAGAAAAAGTCCTCTTTCTGTTCAGAAAAGTTGTAAGTGCATGAAGATGAAGCAGA  
 CACCAGAAATCCTTGGCAGTGCAAAATGGAAAGACTCAGAACTGTGAAGTGAATCATGAATGTTCTGTATT  
 CCTCAGCAAAGCTCAACTTTCTAACAGCCTACAGGAGGGGTCATGCAGAAATTTAATGGCCATGATGCG  
 CTCCTCTTTCTCCAGCAGAGAAGTTGAAAGATCTTACTTCTGTGTTTTAATGGAGAACCTGGTGCTC  
 ATGATACTAAATGTGTTTTGAGGCCAGGAAGTAAAAGGAATGGGACACCACCAATACTACACCTAT  
 CAAAAATGGCTCTCCAGAAATTAAGTAAAAATCACCAAAACATACATGAATGGGAAACCTCTCTTTGAA  
 TCTTCAATTTGTGGTGACGGTGTCTGTCTCAGTCAGAGAAAACGAACAAAAATCTGATAATA  
 AGACTAGGAGAACAGGAAGAGGAGCATAAAATATGACTCTTACTGGAGCAGGGCCTGTGGAAGCAGC  
 TTTAGTGTCCAAGATCTCAAGTCTGCAGATAAAAAGATTCCAGTTAAGAAGGAGTCTGTCCAATACT  
 GGCAGAGACAGAGACCTCTGTAAAAATACAACGTTGGTGATTTGGTGTGGTCCAAAGTGTCAAGTTACC  
 CTGGTGGCCTTGCATGGTTCTGCTGACCCACTCTTCAACAATCATACCAAACCTAAAGGTGAGAAAAA  
 AAGTGCACGCCAGTATCATGTACAGTCTTTGGTGTGATGCCCCAGAAAGAGCTTGGATATTTGAGAAGAGC  
 CTGTTGCTTTTGAAGGAGAAGAACAATTTGAAAAATTATGCCAAGAAAGTGCCAAGCAGGCACCCACGA  
 AAGCTGAGAAAAATCAAGTTGTTGAAACCTATTTCCGGGAGATTGAGAGCCAGTGGGAAATGGGCATTGT  
 CCAAGCTGAGGAAGCTGCCAGCATGTCAATAGAGGAGCGGAAAGCCAAATTTACCTTCTTTATGTGGG  
 GACCAATTGCACCTCAACCTCAAGTAGCTAAGGAGGCTGGCATTGTTACAGAACCTTTGGGAGAAATGG  
 TGGACTTTAGGGGCCAGTGAAGAGGCTGTGTAGACCCTGGTCTGTGAGAGAAGAGGATATTTCCAC  
 GAAGAGAAGCGAAGAACCAAAAGGTCTAGTTCTGCTGAGAACCAAGAAGGTGATCCTGGCACAGACAAG  
 AGTACACCTCAAAGATGGCAGAGGCTGAACCTAAGCGAGGAGTGGCTCTCCTGCTGGGAGGAAAAAGT  
 CCACAGGCTCTGCTCCTCGGAGCAGGAAGGAGACTCAGCAGCCAGTTTTTAGTCTTTTGTCAAAAAACA  
 CAGAGATGAGGTTGTAGCTGAACATCCAGATGCCTCAGGGGAAGAGATTGAAGAATTGCTTGGTCCCAG  
 TGGAGCATGCTCAATGAAAAGCAGAAAGCAGATATAATACAAGTTTTCCCTAATGATCTCTGCCAGT  
 CTGAAGAAGACTCTGAAATGGGAATGGGAAAAAAGAAGCCACACAAGAGAGCAGATGACCCTGCAGA  
 GGATGTGGATGTTGAAGACGCGCCAGGAAAAGACTTAGAGCAGATAAGCACAGTCTTCGGAAGCAGAGA  
 GAGACAATCACCGACAAAACGGCCAGAACAAGCTTTACAAGGCTATAGAGGCAGCTCCTCACTCAAGA  
 GCCAGGCAGCAACGAAAAATTTGTCTGATGCTTGCAAACCACTGAAGAAGCGAAATCGGGCTTCTGCAAC  
 AGCGTCTTCAGCACTTGGGTTTAAACAAAAGTTCATCTCCTTCTGCATCCTTAAGTGAAGCATGAGCTTTTA  
 TGGGAGCCACATCAGTCAAGTTGGACTTGAACCTCAGCCGCCCTGTACTGCACT

**ACGCGT**ACGCGGCCGCTCGAG - GFP Tag - GTTTAA

**Protein Sequence:**

>MG219817 representing NM\_001177884  
 Red=Cloning site Green=Tags(s)

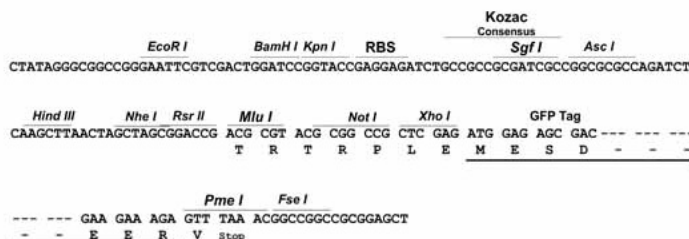
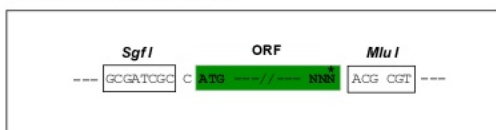
MEFSIRKSPLSVQKVVKCMKMQTPEILGSANGKTQNCENVNHECSVFLSKAQLSNSLQEGVMQKFNHGDA  
 LPFLPAEKLKDLTSCVFNGEPGAHDTKLCFEAQEVKIGITPPNNTPIKNGSPEIKLKITKTYMNGKPLFE  
 SSICGDGAADVQSSEENEQKSDNKTRNRKRSIKYDSLLEQGLVEAALVSKISSPADKKIPVKKESCPNT  
 GRDRDLLLKYNVGDLVWSKVSQYVWPCMVSAADPLLHNHTKLKGQKKSARQYHVQFFGDAPERAWIFEKS  
 LVAFEGEEQFEKLCQESAKQAPTKAEEKLKKPISGRLRAQWEMGIVQAEAAASMSIEERKAKFTFLVYG  
 DQLHLNPQVAKEAGIVTEPLGEMVDSSGASEEAAVDPGSVREEDIPTKRRRRTRKRSSAENQEGDPGTDK  
 STPPKMAEAEPKRQVSPAGRKKSTGSAPRSRKGDSAAQFLVFCQKHRDEVVAEHPDASGEEIEELLGSQ  
 WSMNLNEKQKARYNTKFLMISAQSEEDSNGNGKRSHTKRADDPADVDVEDAPRKRLRADKHSRKRQR  
 ETITDKTARTSSYKAIIEAASSLKSQAATKNLSDACKPLKRNKRASATASSALGFNKSSSPSASLTHELL  
 WEPTSVKLDLNSAALYCT

**TRTRPLE** - GFP Tag - V

**Restriction Sites:** SgfI-MluI

**Cloning Scheme:**

Cloning sites used for ORF Shutting:



**ACCN:** NM\_001177884

**ORF Size:** 1944 bp

**OTI Disclaimer:** The molecular sequence of this clone aligns with the gene accession number as a point of reference only. However, individual transcript sequences of the same gene can differ through naturally occurring variations (e.g. polymorphisms), each with its own valid existence. This clone is substantially in agreement with the reference, but a complete review of all prevailing variants is recommended prior to use. [More info](#)

**OTI Annotation:** This clone was engineered to express the complete ORF with an expression tag. Expression varies depending on the nature of the gene.

**Components:** The ORF clone is ion-exchange column purified and shipped in a 2D barcoded Matrix tube containing 10ug of transfection-ready, dried plasmid DNA (reconstitute with 100 ul of water).

**Reconstitution Method:**

1. Centrifuge at 5,000xg for 5min.
2. Carefully open the tube and add 100ul of sterile water to dissolve the DNA.
3. Close the tube and incubate for 10 minutes at room temperature.
4. Briefly vortex the tube and then do a quick spin (less than 5000xg) to concentrate the liquid at the bottom.
5. Store the suspended plasmid at -20°C. The DNA is stable for at least one year from date of shipping when stored at -20°C.

**RefSeq:** [NM\\_001177884.1](#), [NP\\_001171355.1](#)

**RefSeq Size:** 7806 bp

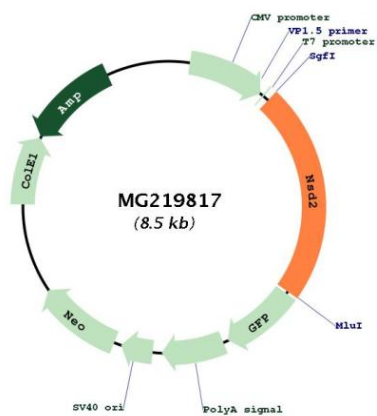
**RefSeq ORF:** 1947 bp

**Locus ID:** 107823

**Cytogenetics:** 5 B2

**Gene Summary:** Histone methyltransferase with histone H3 'Lys-27' (H3K27me) methyltransferase activity. [UniProtKB/Swiss-Prot Function]

**Product images:**



Circular map for MG219817