

Product datasheet for **MG219816**

Nsd2 (NM_175231) Mouse Tagged ORF Clone

Product data:

Product Type:	Expression Plasmids
Product Name:	Nsd2 (NM_175231) Mouse Tagged ORF Clone
Tag:	TurboGFP
Symbol:	Nsd2
Synonyms:	5830445G22Rik; 9430010A17Rik; AW555663; C130020C13Rik; D030027O06Rik; D930023B08Rik; mKIAA1090
Mammalian Cell Selection:	Neomycin
Vector:	pCMV6-AC-GFP (PS100010)
E. coli Selection:	Ampicillin (100 ug/mL)
ORF Nucleotide Sequence:	>MG219816 representing NM_175231 Red=Cloning site Blue=ORF Green=Tags(s)

TTTTGTAATACGACTCACTATAGGGCGGCCGGAATTCGTCGACTGGATCCGGTACCGAGGAGATCTGCC
GCC**GCGATCGCC**

ATGGAATTTAGCATCAGAAAAAGTCCTCTTTCTGTTTCAGAAAGTTGTAAGTGCATGAAGATGAAGCAGA
CACCAGAAATCCTTGGCAGTGCAAATGGAAAGACTCAGAACTGTGAAGTGAATCATGAATGTTCTGTATT
CCTCAGCAAAGCTCAACTTTCTAACAGCCTACAGGAGGGGGTCATGCAGAAATTTAATGGCCATGATGCC
CTCCCCCTTCTCCAGCAGAGAAGTTGAAAGATCTTACTTCTTGTGTTTTAATGGAGAACCTGGTGCTC
ATGATACTAAATGTGTTTTGAGGCCAGGAAGTAAAAGGAATGGGACACCACCAATACTACACCTAT
CAAAAAATGGCTCTCCAGAAATTAAGTAAAATCACCACCAATACATGAATGGGAAACCTCTCTTTGAA
TCTTCAATTTGTGGTGACGGTGCTGCTGATGTGTCTCAGTCAGAAGAAAACGAACAAAAATCTGATAATA
AGACTAGGAGGAACAGGAAGAGGAGCATAAAATATGACTCTTACTGGAGCAGGGCCTTGTGGAAGCAGC
TTTAGTGTCCAAGATCTCAAGTCTGCAGATAAAAAGATTCCAGTTAAGAAGGAGTCTGTCCAATACT
GGCAGAGACAGAGACCTCTTGTAAAAATACAACGTTGGTGATTTGGTGTGGTCCAAGTGTGAGTTACC
CTTGGTGGCCTTGCATGGTTTTCTGCTGACCCACTCCTTCACAATCATACCAAACCTAAAGGTGAGAAAA
AAGTGCACGCCAGTATCATGTACAGTCTTTGGTGATGCCCGAGAAAGAGCTTGGATATTTGAGAAGAGC
CTTGTGCTTTGAAGGAGAAGAACAATTTGAAAAATATGCCAAGAAAGTGCCAAGCAGGCACCCACGA
AAGCTGAGAAAAATCAAGTTGTTGAAACCTATTTGCGGGAGATTGAGAGCCAGTGGGAAATGGGCATTGT
CCAAGCTGAGGAAGCTGCCAGCATGTCAATAGAGGAGCGGAAAGCCAAATTTACCTTCTTTATGTGGGG
GACCAATTGCACCTCAACCTCAAGTAGCTAAGGAGGCTGGCATTGTTACAGAACCTTTGGGAGAAATGG
TGGACTCTTCAGGGGCCAGTGAAGAGGCTGCTGTAGACCCTGGGTCTGTGAGAGAAGAGGATATTTCCAC
GAAGAGAAGGCGAAGAACCAAAAGGTCTAGTTCTGCTGAGAACCAAGAAGGTGATCCTGGCACAGACAAG
AGTACACCTCAAAGATGGCAGAGGCTGAACCTAAGCGAGGAGTAGGCTCTCCTGCTGGGAGGAAAAAGT
CCACAGGCTCTGCTCCTCGGAGCAGGAAGGAGACTCAGCAGCCAGTTTTTAGTCTTTTGTCAAAAAACA



CAGAGATGAGGTTGTAGCTGAACATCCAGATGCCTCAGGGGAAGAGATTGAAGAATTGCTTGGGTCCCAG
TGGAGCATGCTCAATGAAAAGCAGAAAGCAGATATAATACAAAGTTTTCCCTAATGATCTCTGCCAGT
CTGAAGAAGACTCTGAAATGGGAATGGGAAAAAAGAAGCCACACAAAGAGAGCAGATGACCCTGCAGA
GGATGTGGATGTTGAAGACGCGCCAGGAAAAGACTTAGAGCAGATAAGCACAGTCTTCGGAAGAGAGAG
ACAATCACCGACAAAACGGCCAGAACAGCTCTTACAAGGCTATAGAGGCAGCCTCCTCACTCAAGAGCC
AGGCAGCAACGAAAAATTTGCTGATGCTTGCAAACCCTGAAGAAGCGAAATCGGGCTTCTGCAACAGC
GTCTTCAGCACTTGGGTTTAAACAAAAGTTCATCTCCTTCTGCATCCTTAACTGAGCATGAGGTCAGAG
AGCCCAGGAGATGAACCATCAGAGTCTCCATATGAAAAGTGCAGATGAAACACAGACTGAAGCATCCGTCT
CATCTAAAAAATCTGAAAGAGGAATGGCTGCCAAAAAGGAGTACGTGTGTGAGCTGTGTGAGAAGACAGG
CAGTCTCTTACTGTGTGAGGGCCCTGTGTGGAGCATTCCACCTAGCCTGCCTTGGACTTTCGGAAGA
CCGGAAGGAAGATTACCTGCACCGAATGTGCCTCAGGGATTCACTCATGCTTCGTATGTAAAGAAAGCA
AGATGGAGGTGAAACGTTGTGTGGTAAATCAGTGTGAAAGTTTTACCATGAAGCCTGTGTAAAAAATA
CCCTCTCACTGTGTTGAGAGCCGAGGCTTCGCTGTCTCTCCATAGCTGTATGAGTGCCATGCCTCC
AACCTTCAAATCCACGGCCATCAAAGGTAAGTATGATGCGATGTGTCCGATGCCCCGTTGCCTATCATG
GAGGGGATGCCTGTCTGGCAGCAGGATGTTCCGGTATTGCTTCTAACAGCATAATCTGCACAGGCCACTT
CACTGCCCGAAGGGGAAGCGGCCACCATACCCATGTCAATGTGAGCTGGTCTTTGTGTGCTCAAAGGG
GGAAGCCTTCTGTGCTGTGAGGCCTGCCAGCAGCCTTTCACCCGATTGTCTAAACATCGAGATGCCCCG
ATGGTAGCTGGTTCTGCAACGATTGCCGGGCTGAAAAGAAGCTCCACTTTCAGACATCATCTGGGTCAA
ACTTGGTAACTACAGATGGTGGCCGGCAGAAAGTTGCCATCCCAAAAATGTTCCCCCAAATTCAGAAA
ATGAAGCACGAGATTGGAGAATTCCTGTATTTTTCTTTGGGTCTAAAGATTATTACTGGACGCATCAGG
CACGAGTGTCCCATACATGGAGGGGACCGGGCAGCCGCTACCAGGGGTGAGAGGATCGGAAGAGT
CTTCAAGAACGCATTGCAAGAAGCTGAAGCTCGTTTTAATGAAGTCAAACCTCAGCGGGAAGCCCGAGAA
ACACAGGAGAGTGAGAGAAAGCCTCCACCATAACAAGCATATCAAGGTGAATAAACCTTATGGTAAAGTCC
AGATCTACACAGCTGACATTTCTGAAATCCCGAAGTGAAGTGTCAAGCCACAGATGAGAACCCCTGTGG
CTCTGATTGAGAGTGTCTGAACAGGATGCTAATGTTTGAAGTGCACCCGAGGTGTGCTGAGGGGAA
TACTGCCAGAACCAGTGTTCCTAAGCGCCAGTACCCTGAGACCAAGATCATCAAGACAGATGGCAAAG
GGTGGGGCCTGGTTGCCAAAAGGACATCAGAAAAGGAGAATTTGTTAATGAGTATGTTGGTGAGCTGAT
TGATGAAGAGGAGTGTATGGCAAGAATCAAATATGCACATGAGAATGACATCACTCACTTCTACATGCTC
ACCATAGACAAGGACCGCATAATTGATGCTGGCCCCAAAGGGAATTATTCAGGATTCATGAACCATAGCT
GCCAGCCCAATTGTGAGACCCTGAAGTGGACAGTGAATGGGACACACGGGTTGGCCTGTTTGTGTGTG
TGACATTCCTGCAGGTACAGAGTGAATTTCAACTATAACCTTGATTGTTTGGGCAATGAAAAGACAGTC
TGTCCGGTGTGGAGCCTCAACTGTAGTGGTTCCTTGGAGACAGACCAAAGACATCAGCATCCCTTTCAT
CAGAGGAAAAGGGTAAAAAGGCCAAGAAGAAAACCAGAAGGCGCAGAGCCAAGGGTGAAGGAAAACGGCA
GTCAGAGGATGAGTGCTTCGCTGTGGTGTGTTGGGAGCTGGTGTGTGTGACCGCAAGTTCTGTACC
AAGGCCTACCACATATCTGCCTCGGTTTGGGCAAGCGGCCCTTGGGAAGTGGGAATGTCTTGGCATC
ACTGTGATGTATGTGGCAAACCTTCTACCTCATTTTGGCACCTCTGCCCAACTCATTCTGTAAGGAACA
CCAAGATGGGACTGCTTTCGTTCCACCAGGATGGGCAGTCTACTGCTGTGAGCATGACTTGAGGGCA
GACTCTTCAAGTAGCACCAAGACTGAGAAACCTTTCAGAATCACTGAAGTCAAAGGAAAAGAGGAAGA
AAAGGCGGTGCTGGCGAAGGGTCACAGATGGCAA

ACGCGTACGCGGCCGCTCGAG – GFP Tag – GTTTAA

Protein Sequence: >MG219816 representing NM_175231
 Red=Cloning site Green=Tags(s)

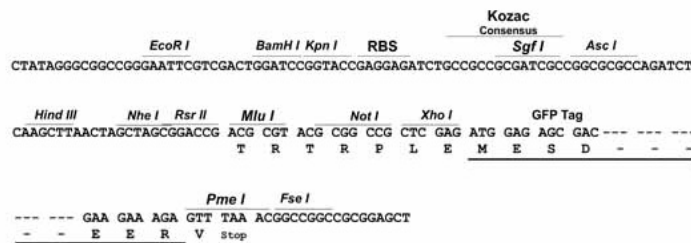
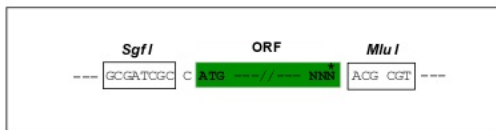
MEFSIRKSPLSVQKVVKCMKMKQTPEILGSANGKTQNCENVHECSVFLSKAQLSNSLQEGVMQKFNHDA
 LPFLPAEKLKDLTSCVFNGEPGAHDTKLCFEAQEVKIGTPPNTTPIKNGSPEIKLKITKTYMNGKPLFE
 SSIICGDGAADVQSSEENEQKSDNKTRNRKRKSIKYDSLLEQGLVEAALVSKISSPADKKIPVKKESCNT
 GRDRDLLLKYNVGDLVWSKVSGYPWWPCMVSAADPLLHNHTKLGQKKSARQYHVQFFGDAPERAWIFEKS
 LVAFEGEEQFEKLCQESAKQAPTKAEKIKLLKPI SGRLRAQWEMGIVQAEAAASMSIEERAKFTFLYVG
 DQLHLNPQVAKEAGIVTEPLGEMVDSSGASEAAVDPGVSREEDIPTKRRRRTRKRSSAENQEGDPGTDK
 STPPKMAEAEPKRGVSPAGRKKSTGSAPRSRKGDSAAQFLVFCQKHRDEVVAEHPDASGEEIEELLGSQ
 WSMLEKQKARYNTKFLMISAQSEEDSGNGGKRSHTKRADDPADVDVEDAPRKRLRADKHSRLRRE
 TITDKTARTSSYKAI EAASSLSQAATKNLSDACKPLKRNRSATASSALGNKSSSPASL TEHEVSD
 SPGDEPSESPYSADETQTEASVSKKSERGMAAKKEYVCQLCEKTGSLLLCEGPCCGAFHLACLGLSRR
 PEGRFTCTECASGIHSCFVCKESKMEVKRCVVNQCGKFYHEACVKKYPLTVFESRGRFRCPLHSCMSCHAS
 NPSNPRPSKGMRCVRCVAYHGGDACLAAGCSVIASNSI ICTGHFTARKGKRHHHTHVNSWFCVCSKG
 GSLLCCEACPAAFHPDCLNIEMPDGSWFCNDCRAGKLFHFQDI IWVKLGNYRWWPAEVCHPKNVPPNIQK
 MKHEIGEFVFFFGSKDYWTHQARVFPYMEGDRGSRYQGVIRGIRVFKNALQEAEARFNEVKLQREARE
 TQESERKPPYKHIKVNKPYGKVIYTADISEIPKCNCKPTDENPCGSDSECLNRMLMFECHPQVCPAGE
 YCQNQCFTRQYPETKIIKTDGKGWGLVAKRDIRKGEFVNEYVGLIDEEECMARIKYAHENDITHFYML
 TIDKDRIIDAGPKGNYSRFMNHSCQPNCE TLKWTVNGDTRVGLFVAVCDIPAGTELTFNYNLDCLGNEKTV
 CRCGASNCSGFLGDRPKTSASLSSEEK GKAKKKTRRRRAKGEGRQSEDECFRCGDGGQLVLCDRKFC
 KAYHL SCLGLGRPF GKWECPWHHCDVCGKPTSFCHLCPNSFCKEHQDGTAFRSTQDGGYSYCEHDLRA
 DSSSSTKTEKPFPELSKSKGKRKRRCWRRVTDGK

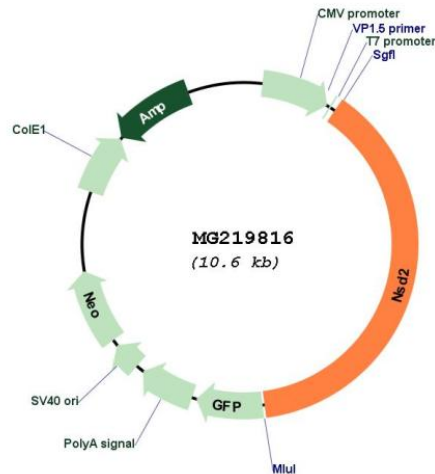
TRTRPLE - GFP Tag - V

Restriction Sites: SgfI-MluI

Cloning Scheme:

Cloning sites used for ORF Shuttling:



Plasmid Map:


ACCN: NM_175231

ORF Size: 4095 bp

OTI Disclaimer: The molecular sequence of this clone aligns with the gene accession number as a point of reference only. However, individual transcript sequences of the same gene can differ through naturally occurring variations (e.g. polymorphisms), each with its own valid existence. This clone is substantially in agreement with the reference, but a complete review of all prevailing variants is recommended prior to use. [More info](#)

OTI Annotation: This clone was engineered to express the complete ORF with an expression tag. Expression varies depending on the nature of the gene.

Components: The ORF clone is ion-exchange column purified and shipped in a 2D barcoded Matrix tube containing 10ug of transfection-ready, dried plasmid DNA (reconstitute with 100 ul of water).

Reconstitution Method:

1. Centrifuge at 5,000xg for 5min.
2. Carefully open the tube and add 100ul of sterile water to dissolve the DNA.
3. Close the tube and incubate for 10 minutes at room temperature.
4. Briefly vortex the tube and then do a quick spin (less than 5000xg) to concentrate the liquid at the bottom.
5. Store the suspended plasmid at -20°C. The DNA is stable for at least one year from date of shipping when stored at -20°C.

RefSeq: [NM_175231.2](#), [NP_780440.2](#)

RefSeq Size: 6933 bp

RefSeq ORF: 4098 bp

Locus ID: 107823

UniProt ID: [Q8BVE8](#)

Cytogenetics: 5 B2

Gene Summary: Histone methyltransferase with histone H3 'Lys-27' (H3K27me) methyltransferase activity.
[UniProtKB/Swiss-Prot Function]